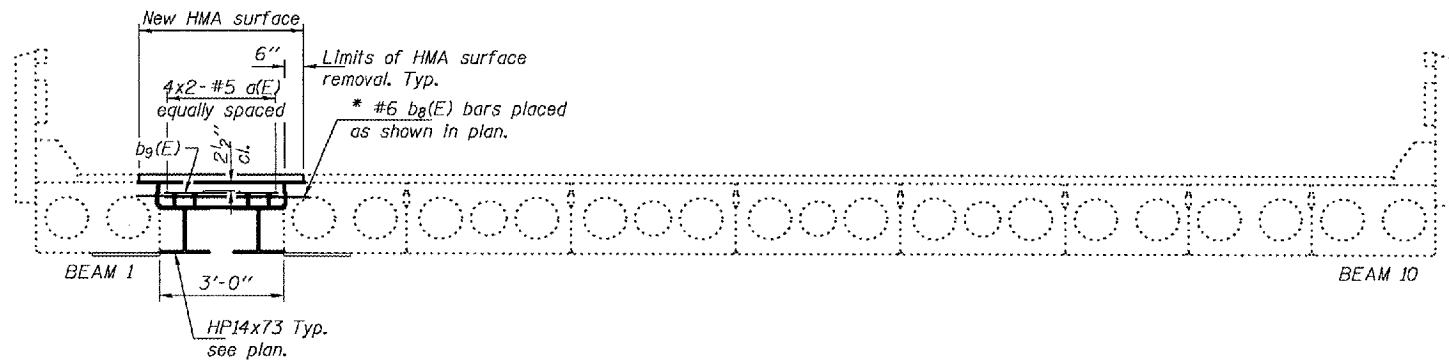


STATE OF ILLINOIS  
DEPARTMENT OF TRANSPORTATION

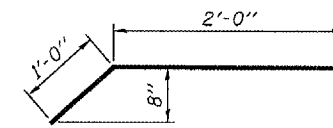
ROUTE NO.	SECTION	COUNTY	DISTRICT	SHEET NO.	SHEET NO. 3 6 SHEETS
FA 686		JACKSON	12	7	
FED. ROAD DIST. NO. 7		ILLINOIS	FED. AID PROJECT-		

Contract Number: 78019

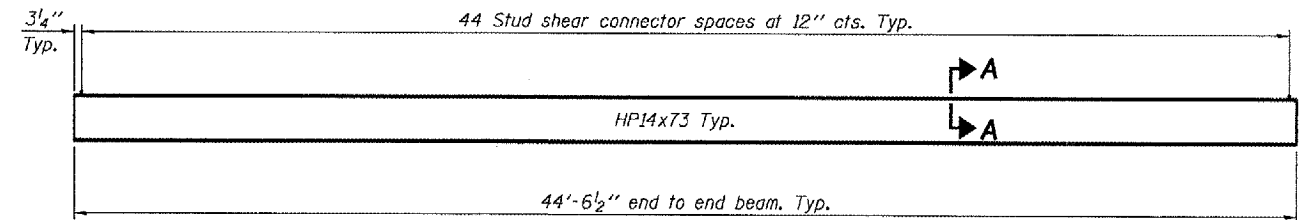


**SECTION THRU SPAN 8**  
(In Span, Looking East)

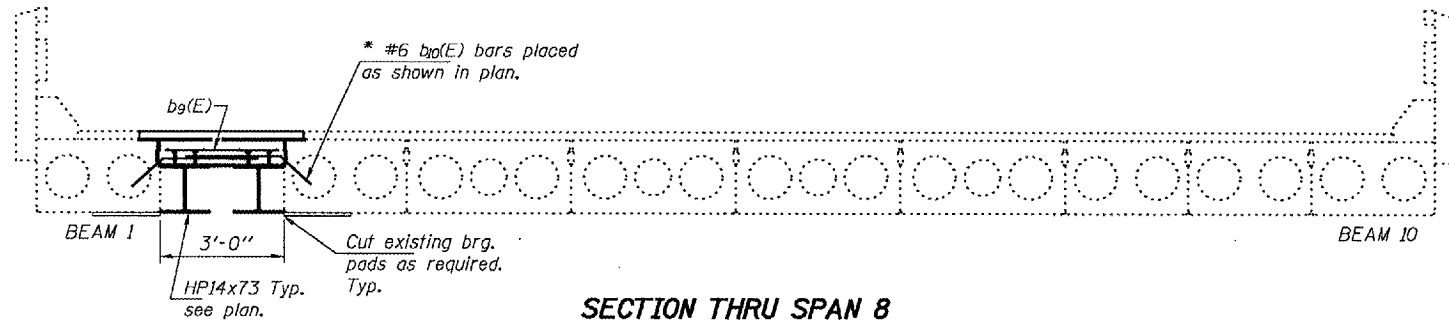
\* Epoxy grout in 9" min. holes according to Article 584 of the Standard Specifications.



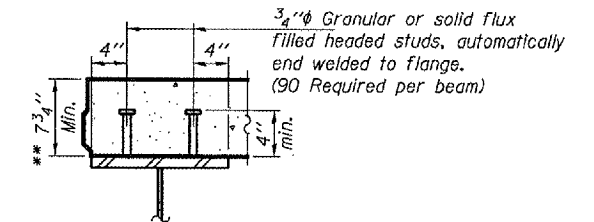
**BAR b<sub>g</sub>(E)**



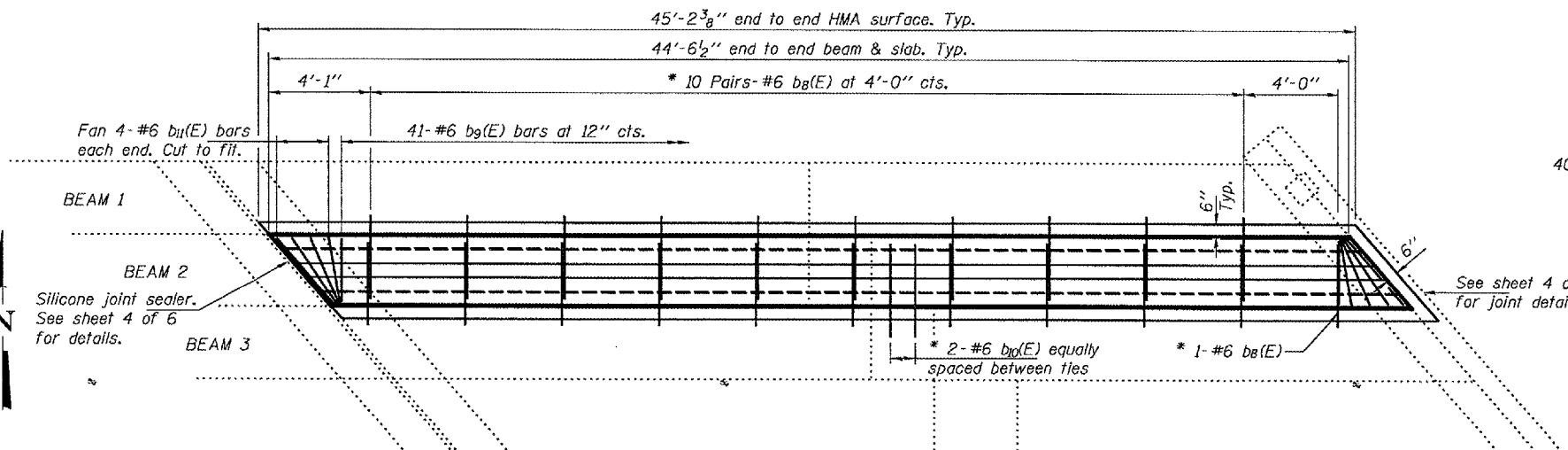
**HP ELEVATION**



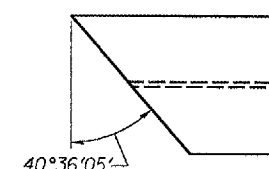
**SECTION THRU SPAN 8**  
(Near Ties, Looking East)



**SECTION A-A**  
\*\* Top of concrete deck shall match top of existing PPC deck beams.



**PLAN SPAN 8**



**END OF HP**

**BILL OF MATERIAL**

Bar	No.	Size	Length	Shape	
a(E)	8	#5	23'-6"		
b <sub>g</sub> (E)	21	#6	3'-6"		
b <sub>g</sub> (E)	41	#6	2'-8"		
b <sub>ll</sub> (E)	2	#6	3'-0"		
b <sub>ll</sub> (E)	8	#6	3'-8"		
Reinforcement Bars, Epoxy Coated				Pound	520
Concrete Superstructure				Cu. Yd.	3.2

**REPAIR DETAILS**  
FA 686 (IL RTE 4)  
JACKSON COUNTY  
SN 039-0042

Note:  
See sheet 4 of 6 for waterproofing treatment.

DESIGNED	ATH
CHECKED	SJB
DRAWN	baliva
CHECKED	ATH SJB

AUGUST 30, 2007  
EXAMINED *Carl P. ...*  
PASSED *Ralph E. Anderson*  
ENGINEER OF BRIDGES AND STRUCTURES