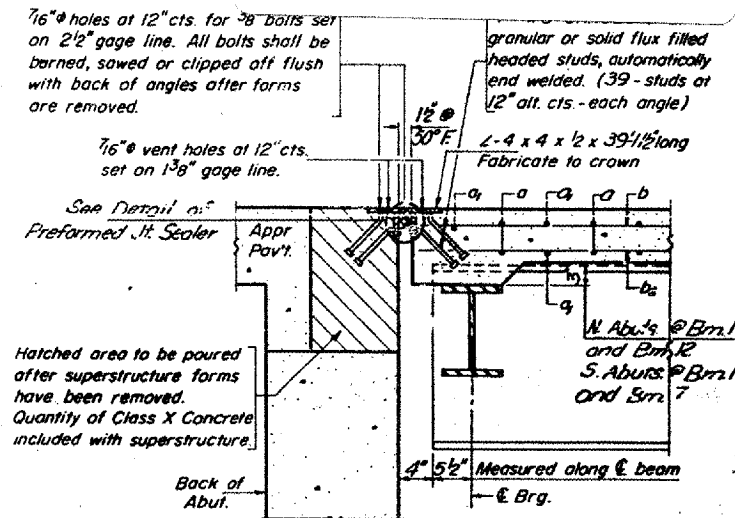
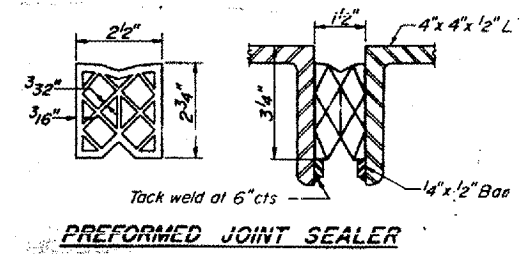
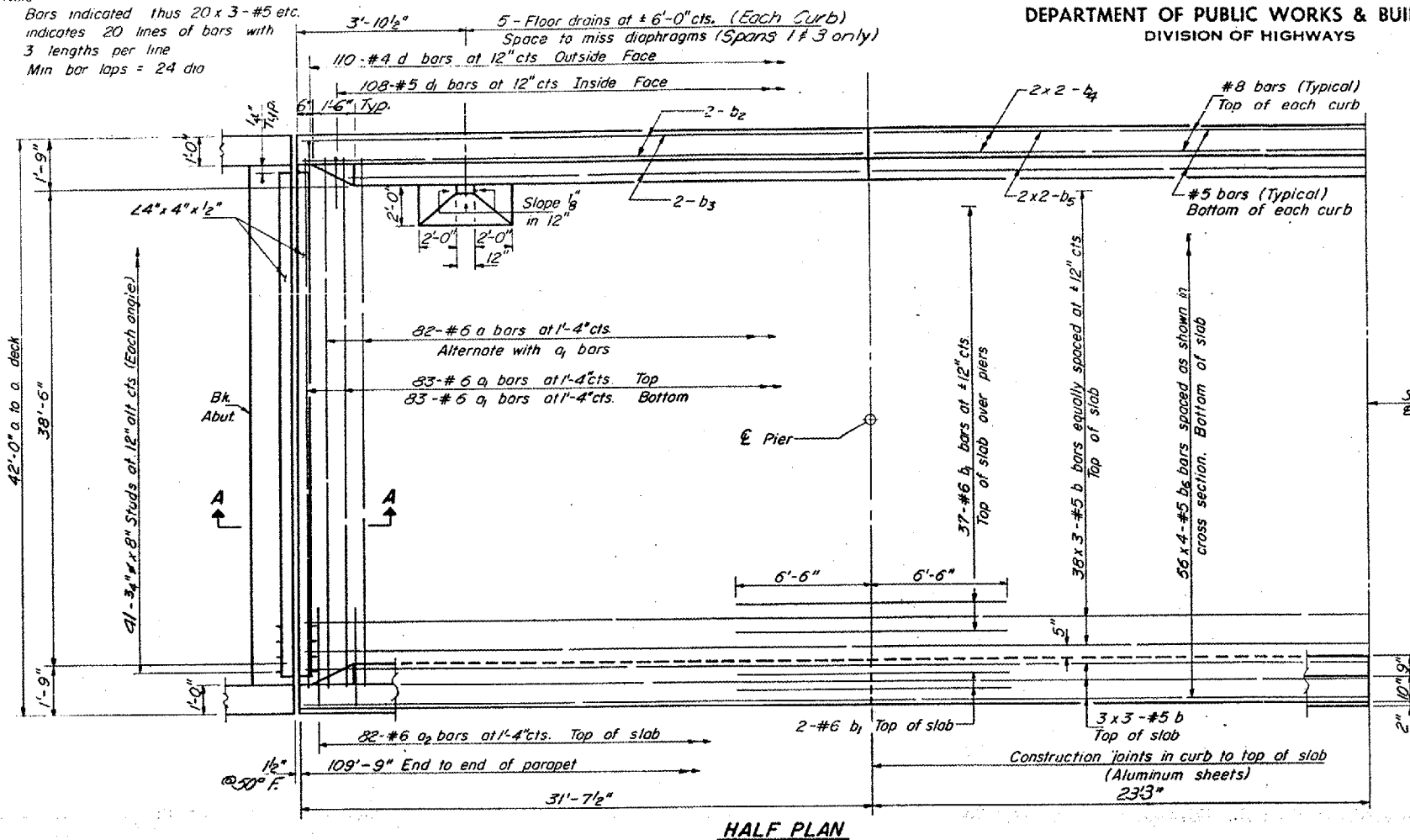


STATE OF ILLINOIS
DEPARTMENT OF PUBLIC WORKS & BUILDINGS
DIVISION OF HIGHWAYS

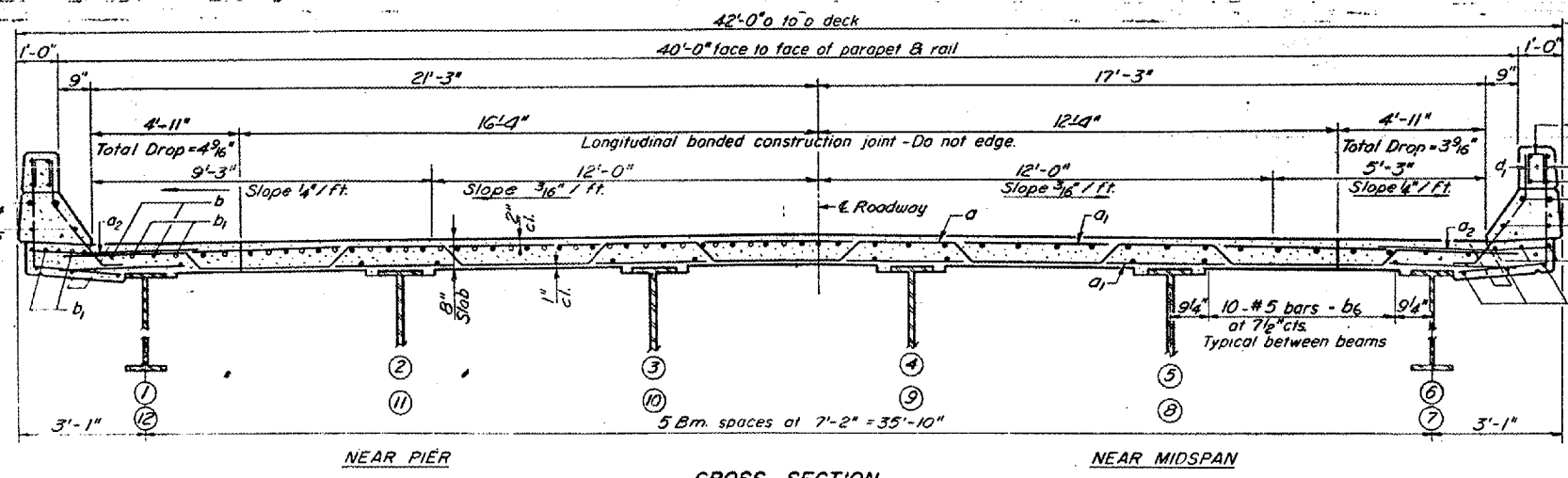
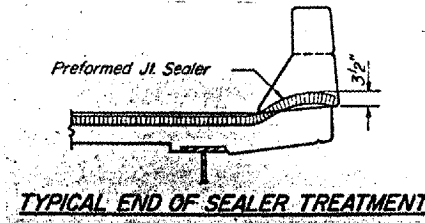
FAI 24
D9 BRIDGE PAINTING FY 08-1
JOHNSON & WILLIAMSON COUNTIES
CONTRACT 78020
SHEET 7 OF 35

Note
Bars indicated thus 20 x 3 - #5 etc.
indicates 20 lines of bars with
3 lengths per line
Min bar laps = 24 dia

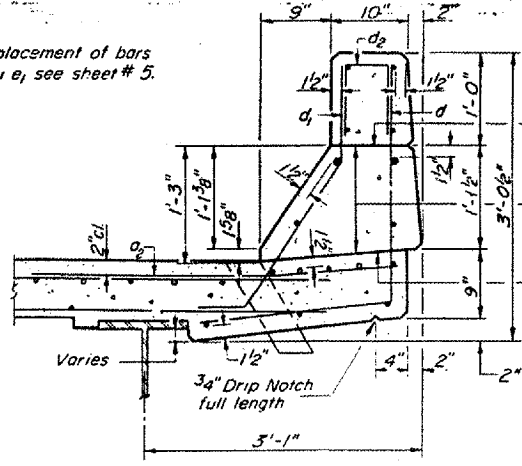


SECTION A-A
TWO SUPERSTRUCTURES
BILL OF MATERIAL

Bar	No	Size	Length	Shape
a	164	#6	41'-9"	~
a ₁	332	#6	40'-0"	~
a ₂	328	#6	4'-0"	~
b	264	#5	37'-6"	~
b ₁	164	#6	13'-0"	~
b ₂	16	#8	31'-3"	~
b ₃	16	#5	31'-3"	~
b ₄	16	#8	24'-3"	~
b ₅	16	#5	24'-0"	~
b ₆	448	#5	28'-6"	~
d	440	#4	4'-10"	J
d ₁	432	#5	3'-5"	J
Reinforcement Bars				Lbs 65,300
Structural Steel				Lbs L.S.
Class X Concrete				Cu Yds 267.6

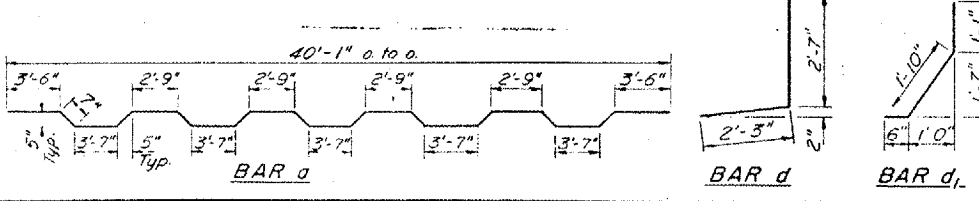


Note: For placement of bars d₂ & e thru e₁ see sheet #5.



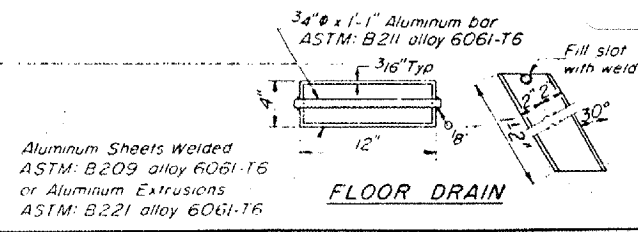
CURB SECTION
Cost of Aluminum Drains and Sheets shall be incidental to Class X Concrete

CROSS SECTION
(E. Bd. LANES LOOKING NORTH - Bms. 1 thru 6)
(W. Bd. LANES LOOKING SOUTH - Bms. 7 thru 12)
(Cross section typical from Sta. 408 + 07.33 to Sta. 408 + 46.12)
(Superelevation transition as shown on Curve Data sheet #1)



DESIGNED J.M. Patel
CHECKED [Signature]
DRAWN R. Doty
CHECKED [Signature]

EXAMINED [Signature]
PASSED [Signature]
APPROVED [Signature]



BRIDGE NO. 1
S.N. 044-0041
FOR INFORMATION ONLY

quantities. See sheet #6.

SUPERSTRUCTURE
F.A.I. RT. 24 - SEC. 44-5HB-2
JOHNSON COUNTY
STA. 408 + 61.70