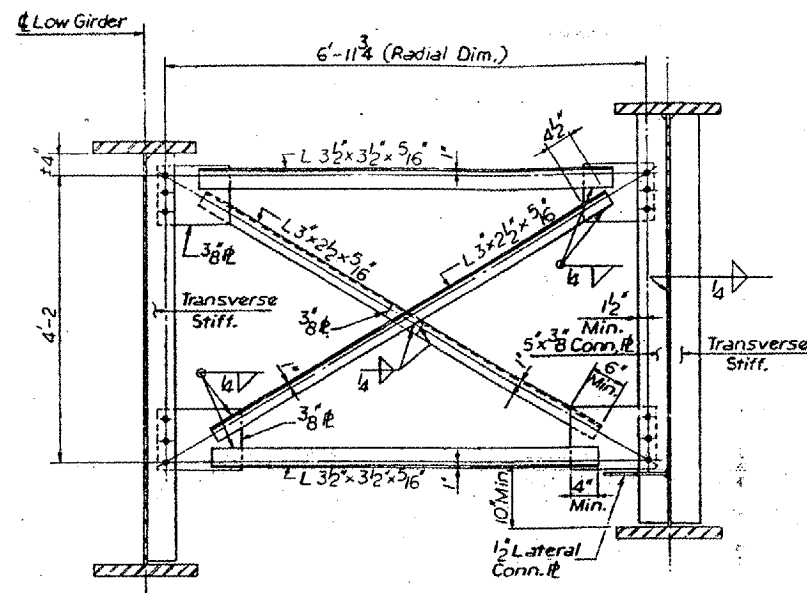
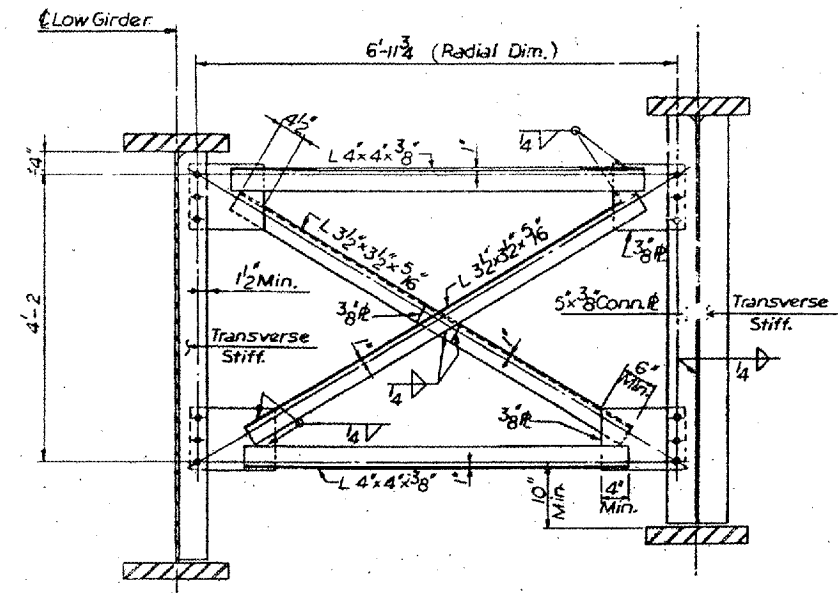


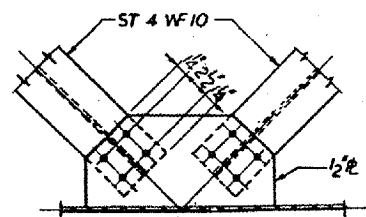
END CROSS FRAME



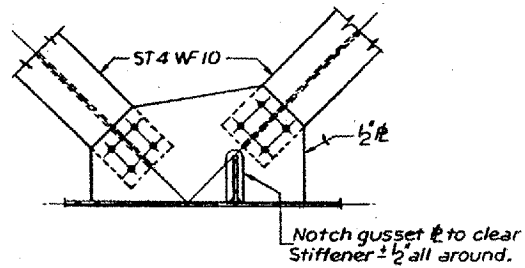
TYP. INTERIOR CROSS FRAME CF1



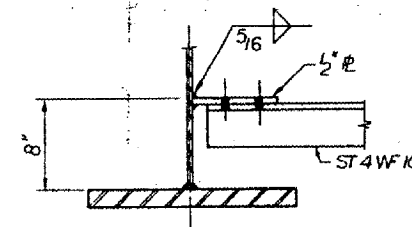
CROSS FRAME CF2 AT PIER



TYPICAL LATERAL BRACING



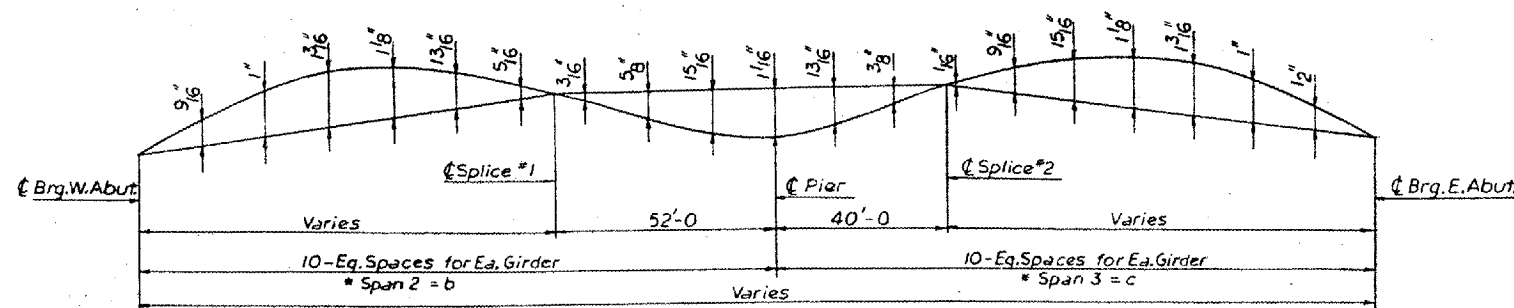
LATERAL BRACING NEAR TRANSVERSE STIFFENER



LATERAL BRACING

ELEVATION TOP OF STEEL GIRDER WEBS						
Girder No.	1	2	3	4	5	6
⊖ Brq. W. Abut.	662.811	663.356	663.900	664.442	664.984	665.625
** ⊖ Splice #1	662.921	663.456	663.989	664.522	665.054	665.585
⊖ Pier	662.833	663.363	663.892	664.419	664.947	665.474
** ⊖ Splice #2	662.932	663.458	663.983	664.507	665.032	665.555
⊖ Brq. E. Abut.	662.841	663.360	663.878	664.395	664.912	665.429

** Adjusted for camber (vertical curve & Dead Load Deflection due to weight of concrete & steel.)



CAMBER DIAGRAM

* Note:
For Dim. b & c see Table of Dimensions sht. 8

BRIDGE NO. 6
S.N. 100-0060
FOR INFORMATION ONLY

ILLINOIS DIVISION OF HIGHWAYS		
FAI ROUTE 24		
PROJECT		SECTION XI-2HB
WILLIAMSON COUNTY		
STEEL DETAILS		
Designed By: H.M.	Drawn By: E.M.	Quantity By:
Checked By: B.A.	Checked By: L.P.	Checked By: