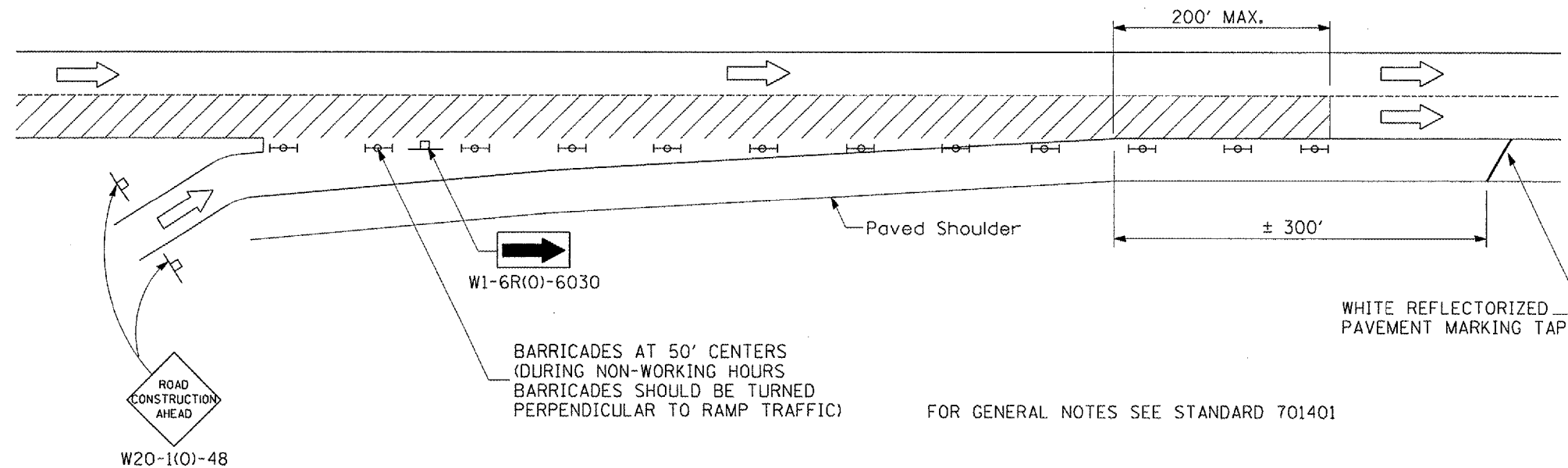


STATE OF ILLINOIS  
DEPARTMENT OF TRANSPORTATION

RTE.	SECTION	COUNTY	TOTAL SHEETS	SHEET NO.
FAI 24	.	JOHNSON WILLIAMSON	35	35

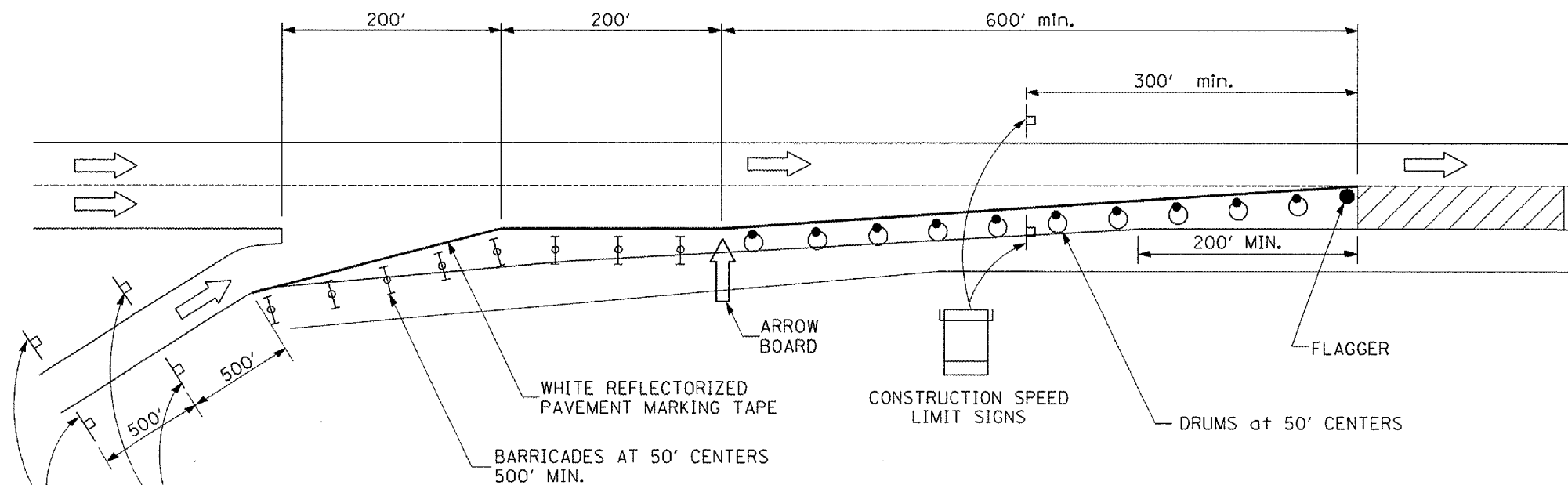
\*SECTION D9 BRIDGE PAINTING FY 08-1  
CONTRACT NO. 78020



**STAGE I**  
RIGHT LANE CLOSURE  
PERMITTED AT ENTRANCE RAMP

SYMBOLS

- Work area
- Sign
- Type II barricades with steady burning monodirectional light
- Drums with steady burning monodirectional light
- Flagger



FOR GENERAL NOTES SEE STANDARD 701401

**STAGE II**  
RIGHT LANE CLOSURE  
PERMITTED 200' BEYOND ENTRANCE RAMP

**DETAIL OF TRAFFIC CONTROL  
AT ENTRANCE RAMPS**