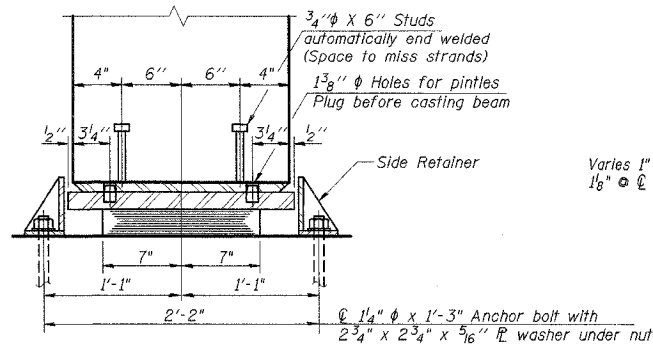


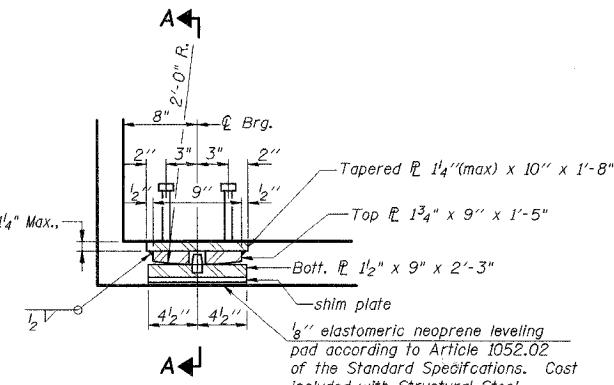
**SECTION AT ABUT.**

**TYPE I ELASTOMERIC EXP. BRG.**



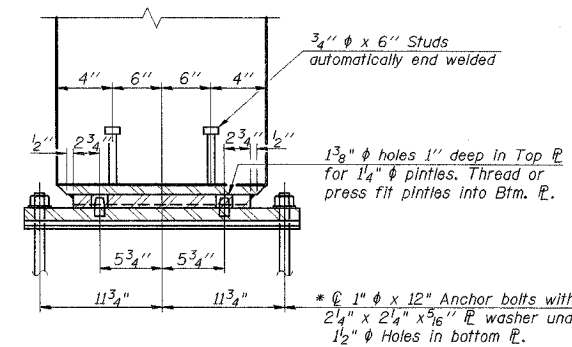
**SECTION A-A**

Notes:  
After beams have been erected holes at expansion bearings shall be drilled and anchor bolts grouted in place. See sheet of for anchor bolt installation.



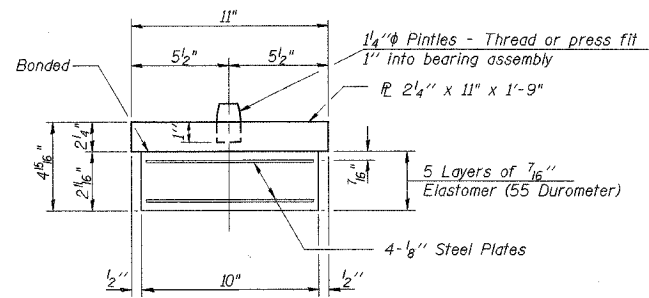
**SECTION AT ABUT.**

**FIXED BEARING**



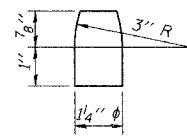
**SECTION A-A**

\* Anchor bolts may be built into the masonry or drilled in place after all beams have been erected. See sheet of for anchor bolt installation.

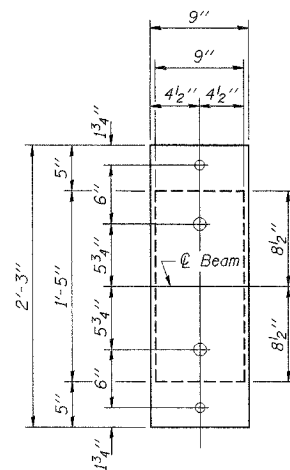


**BEARING ASSEMBLY**

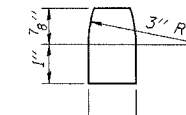
Note: Shim plates shall not be placed under Bearing Assembly.



**PINTLE**



**PLAN OF TOP & BOTTOM PLATES**



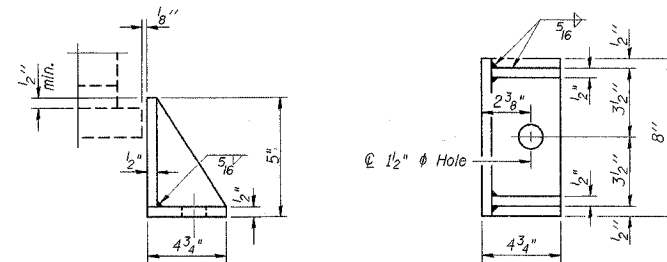
**PINTLE**

Notes:

- All embedded and separate bearing plates, side retainers, anchor bolts, nuts, washers and pintles shall be galvanized according to AASHTO M111 or M298 (as applicable).
- H.S. bolts in bearing assembly shall be galvanized according to AASHTO M298 Class 50.

**BILL OF MATERIAL**

Item	Unit	Total
Elastomeric Bearing Assembly, Type I	Each	6



**SIDE RETAINER**

Equivalent rolled angle with stiffeners will be allowed in lieu of welded plates.

**SHT. S-12 OF 28**

REVISIONS	
NAME	DATE

LOCKPORT TOWNSHIP HIGHWAY DEPARTMENT  
TR216A HIGH ROAD OVER LONG RUN CREEK  
SECTION 02-11106-01-BR

**BEARING DETAILS**

SCALE: DATE: 9-07-2007 DRAWN BY: KK CHECKED BY: JRH

**TENG** TENG & ASSOCIATES, INC. ENGINEERS/ARCHITECTS/PLANNERS 261 S. MICHIGAN AVE. CHICAGO, IL 60601 TEL: 312.467.1000 FAX: 312.467.1001