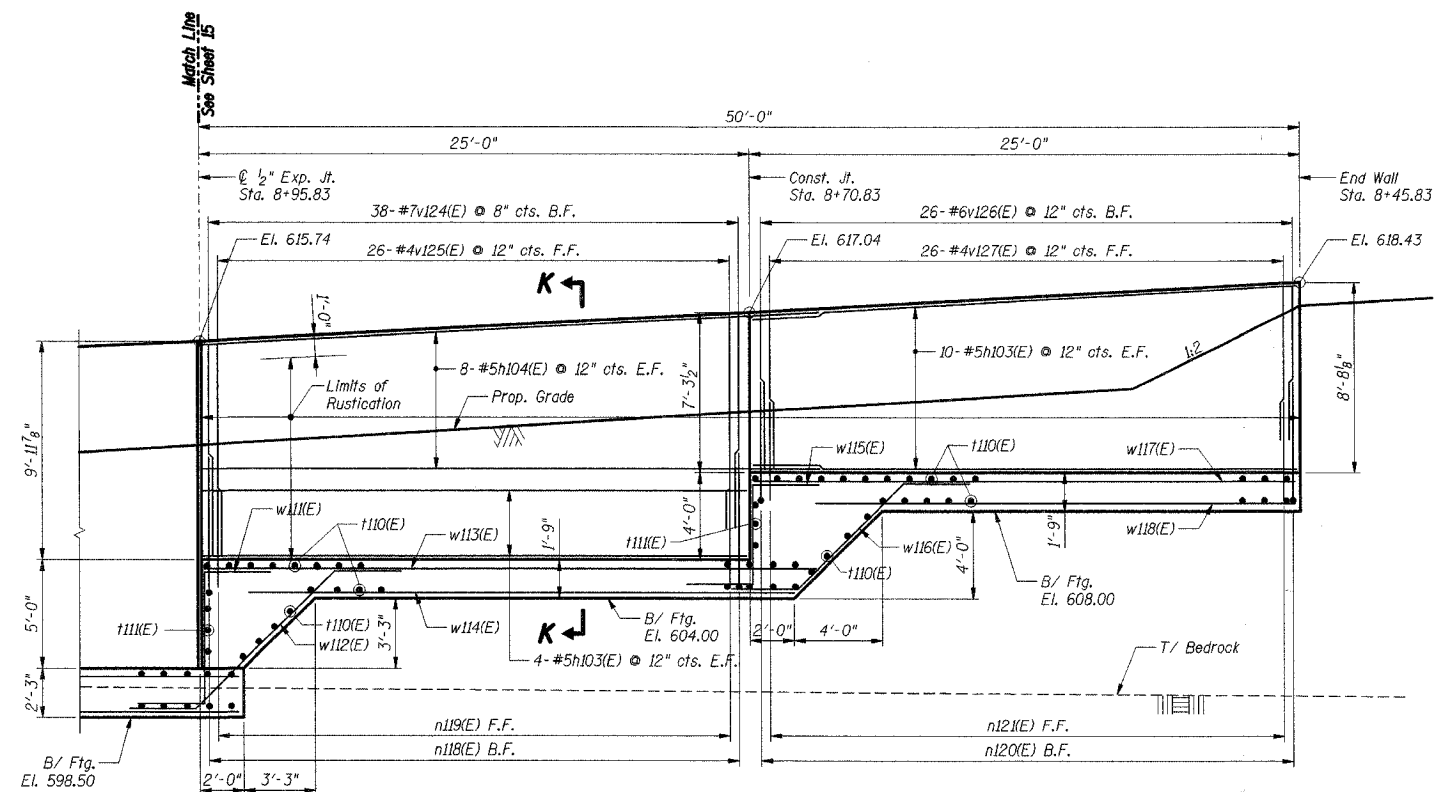
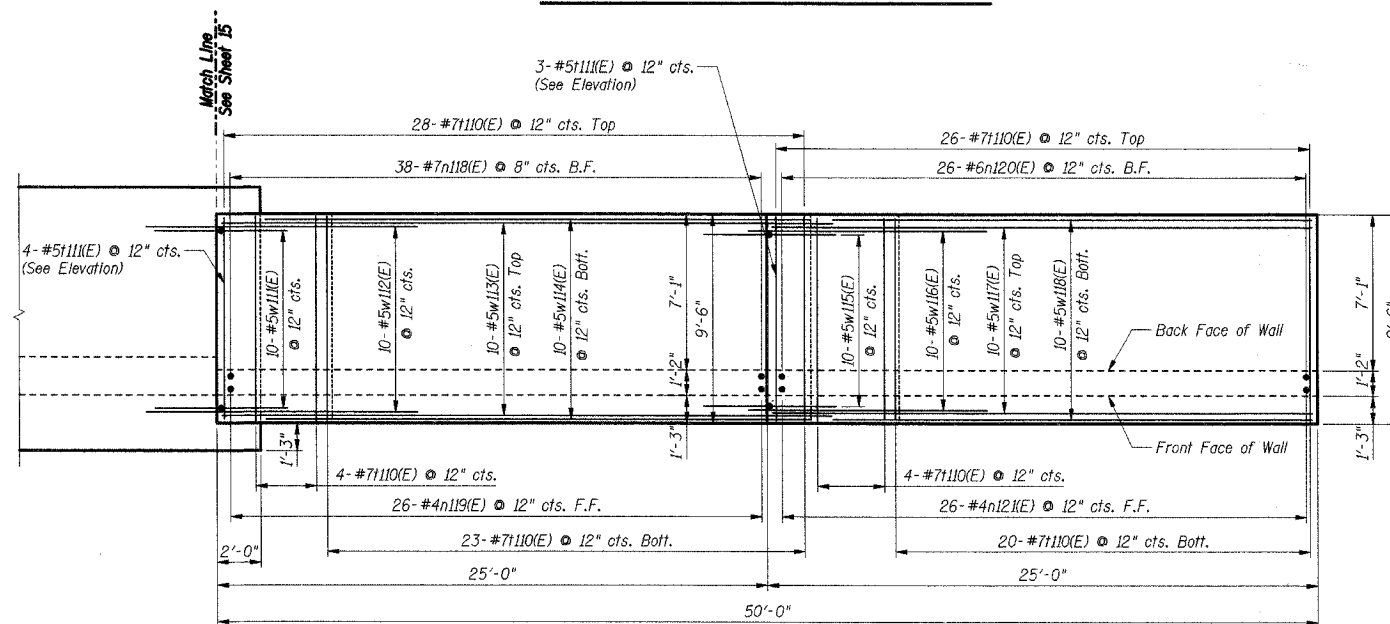


F.A. RTE.	SECTION	COUNTY	TOTAL SHEETS	SHEET NO.
	*	WILL	64	32
STA.	TO STA.			
FED. ROAD DIST. NO.	ILLINOIS	FED. AID PROJECT		
* 02-11106-01-BR		CONTRACT NO. 83949		



ELEVATION - SW RETAINING WALL



FOOTING PLAN - SW RETAINING WALL

- Notes:**
1. Work this sheet with Shts. S-13 thru S-24.
 2. Reinforcement bars designated (E) shall be epoxy coated.
 3. F.F. denotes Front Face.
B.F. denotes Back Face.
 4. For Bar List & Bill of Material, see Sht. S-24.
 5. For Section K-K, see Sht. S-23.

SHT. S-16 OF 28

REVISIONS	
NAME	DATE

LOCKPORT TOWNSHIP HIGHWAY DEPARTMENT
TR216A HIGH ROAD OVER LONG RUN CREEK
SECTION 02-11106-01-BR

**SOUTHWEST RETAINING WALL
PLAN AND ELEVATION 2**

SCALE: DRAWN BY: KK
DATE: 9-07-2007 CHECKED BY:

TENG
TENG & ASSOCIATES, INC.
ENGINEERS ARCHITECTS PLANNERS
200 N. MICHIGAN AVE. CHICAGO, IL 60601
TELEPHONE: 312.467.1000

ERWINCC

S:\PROJECTS\02122902\STRUCT\02GNRET\02RWA.DGN
9-07-2007 13:58:55