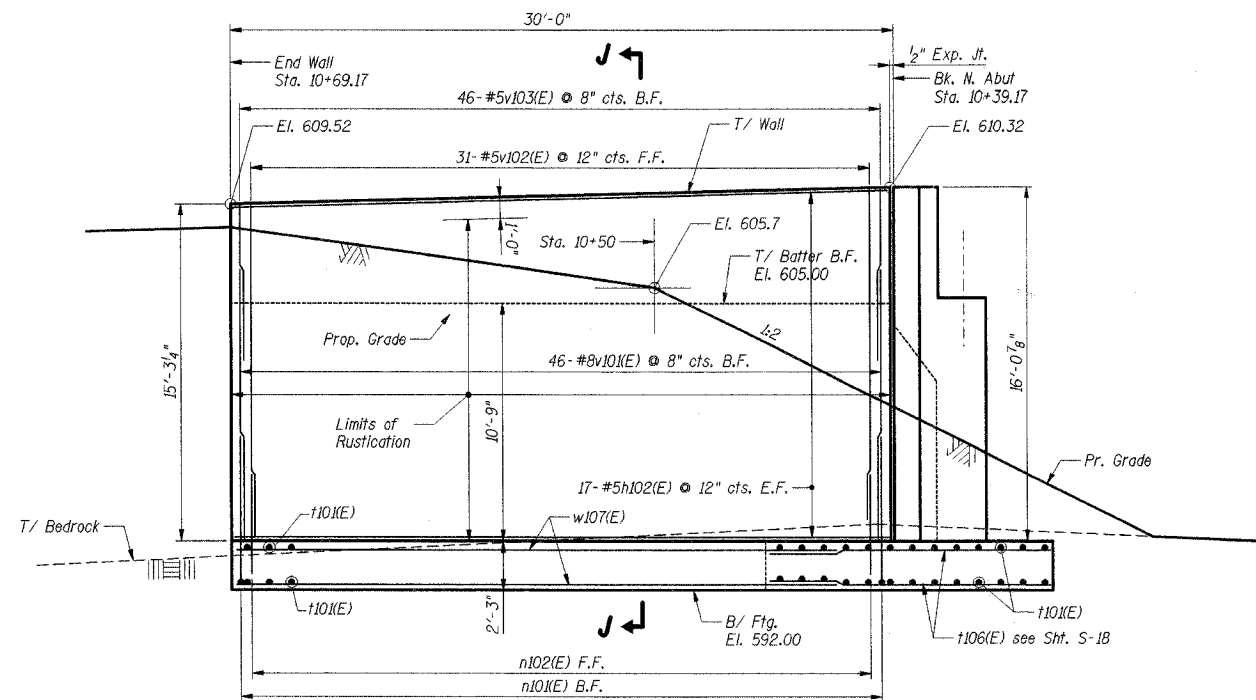
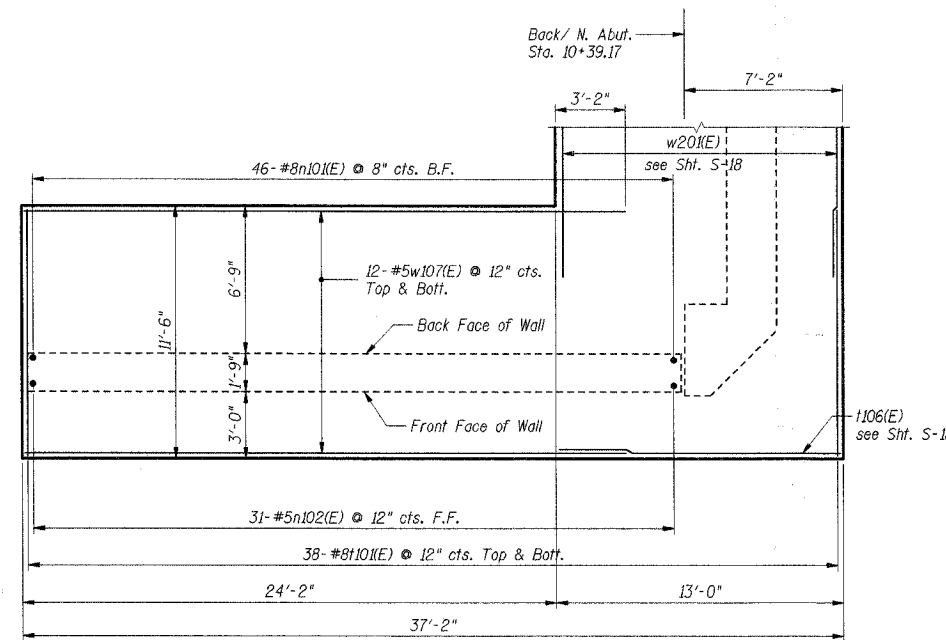


F.A. RTE.	SECTION	COUNTY	TOTAL SHEETS	SHEET NO.
		WILL	64	36
STA.		TO STA.		
FED. ROAD DIST. NO.	ILLINOIS	FED. AID PROJECT		
02-11106-01-BR		CONTRACT NO. 83949		



ELEVATION - NW RETAINING WALL



FOOTING PLAN - NW RETAINING WALL

Notes:

1. Work this sheet with Shts. S-18 thru S-24.
2. Reinforcement bars designated (E) shall be epoxy coated.
3. F.F. denotes Front Face.
B.F. denotes Back Face.
4. For Bar List & Bill of Material, see Sht. S-24.
5. For Section J-J, see Sht. S-23.

SHT. S-20 OF 28

REVISIONS	
NAME	DATE

LOCKPORT TOWNSHIP HIGHWAY DEPARTMENT
TR216A HIGH ROAD OVER LONG RUN CREEK
SECTION 02-11106-01-BR

**NORTHWEST RETAINING WALL
PLAN AND ELEVATION**

SCALE: DATE: 9-07-2007 DRAWN BY: KK CHECKED BY: CCE

TENG

TENG & ASSOCIATES, INC.
ENGINEERS ARCHITECTS PLANNERS
200 N. MICHIGAN AVE. CHICAGO, IL 60601
TELEPHONE: 312.467.9999

ERWINCC
 S:\DOCUMENT\02399902\STRUCT\CON\RET\00RME.DGN
 9-07-2007, 11:38:53