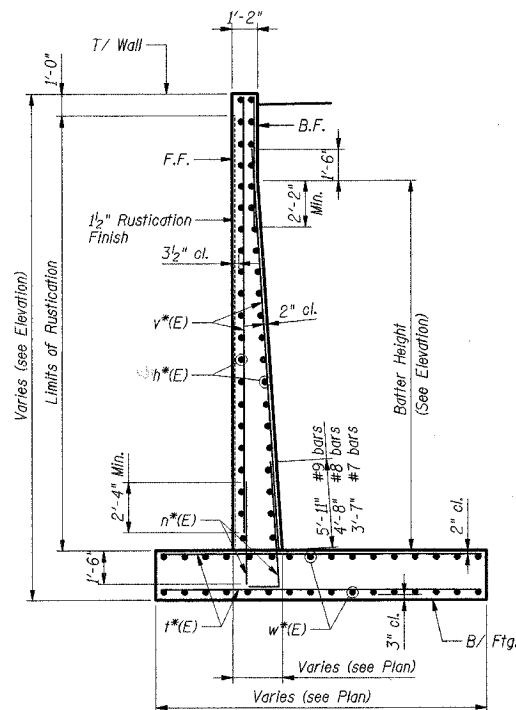
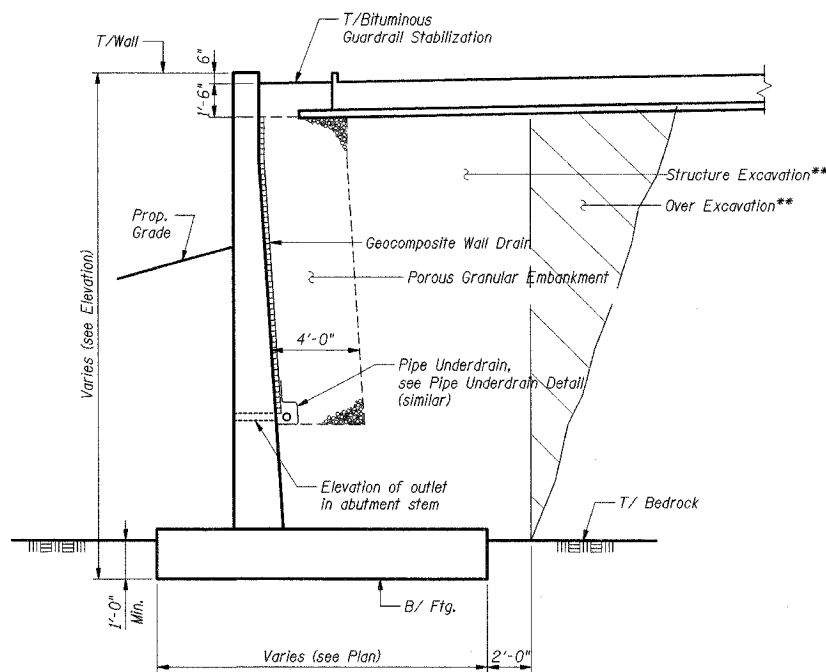


F.A. RTE.	SECTION	COUNTY	TOTAL SHEETS	SHEET NO.
	*	WILL	64	39
STA.		TO STA.		
FED. ROAD DIST. NO.	ILLINOIS	FED. AID PROJECT		
* 02-11106-01-BR		CONTRACT NO. 83949		



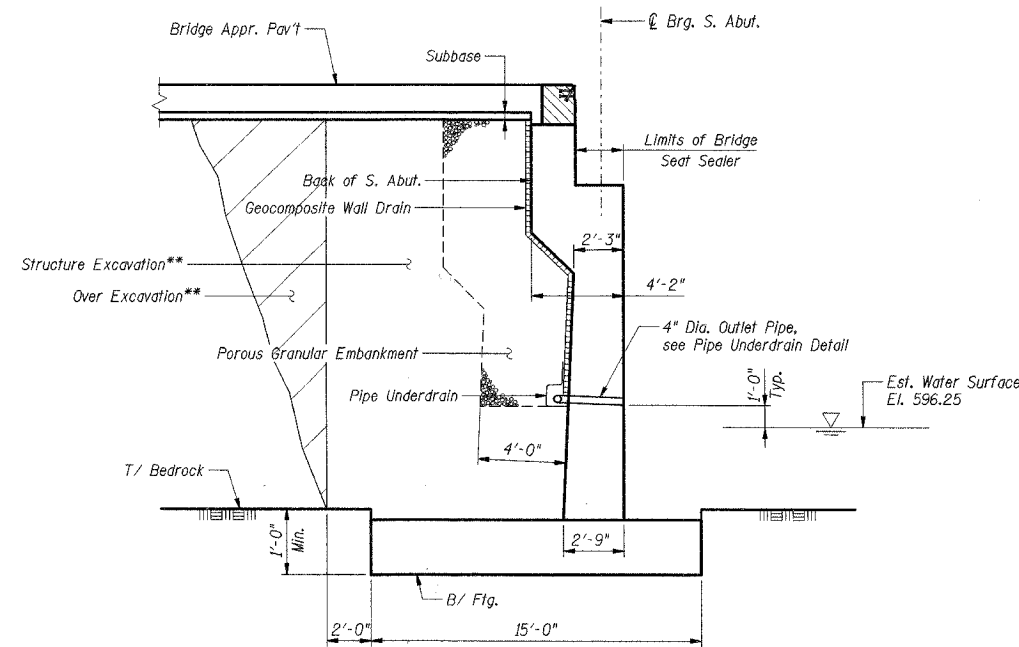
**SECTION J-J**

(Spread Footing on Bedrock)

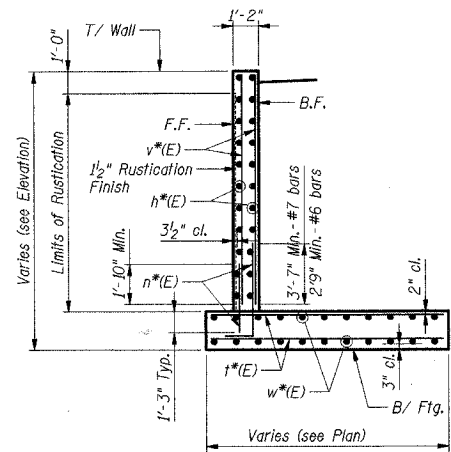


**TYP. SECTION THRU RETAINING WALL**

(Spread Footing on Bedrock)

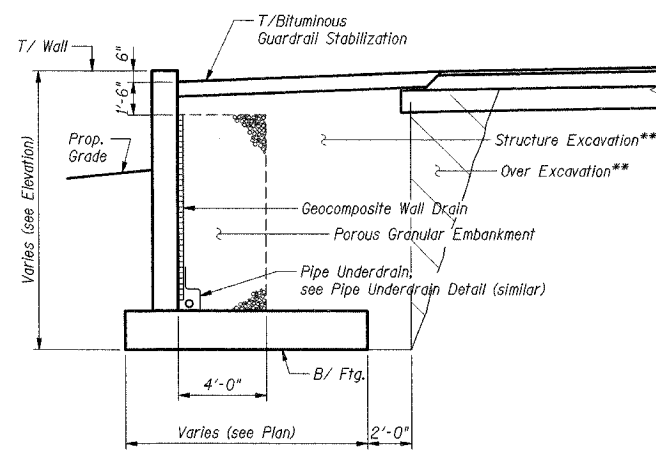


**SECTION THRU SOUTH ABUTMENT  
SECT. THRU NORTH ABUT. - SIMILAR**



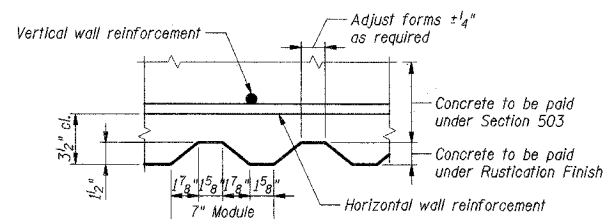
**SECTION K-K**

(Spread Footing on Soil)

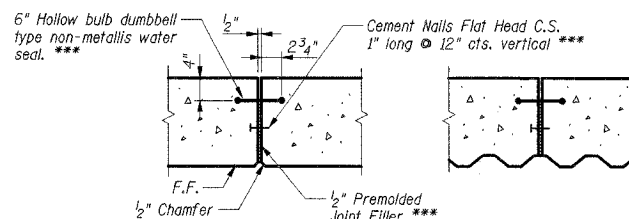


**TYP. SECTION THRU RETAINING WALL**

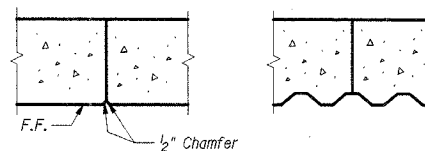
(Spread Footing on Soil)



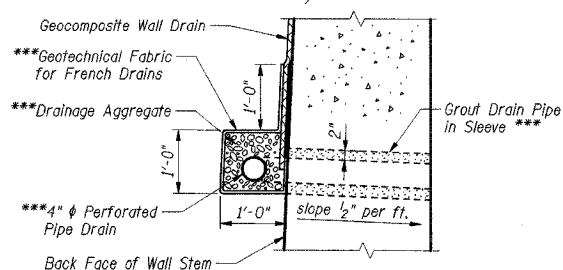
**HORIZ. SECTION THRU RET. WALL**



**EXPANSION JOINT DETAIL**



**CONSTRUCTION JOINT DETAIL**



**PIPE UNDERDRAIN DETAIL**

- \* For location of bars, identification and quantity see foundation plans and wall elevations.
- \*\* Backfill remainder of structure excavation and over excavation with same material specified for roadway embankment.
- \*\*\* Included in cost of Pipe Underdrains for Structures. See Special Provisions for material and aggregate gradation specifications.

SHT. 5-23 OF 28

REVISIONS	
NAME	DATE

LOCKPORT TOWNSHIP HIGHWAY DEPARTMENT  
TR216A HIGH ROAD OVER LONG RUN CREEK  
SECTION 02-11106-01-BR

**ABUTMENT AND RETAINING WALL  
TYPICAL DETAILS**

SCALE: DATE: 9-07-2007 DRAWN BY: KK CHECKED BY: CCE

**TENG**

TENG & ASSOCIATES, INC.  
ENGINEERS AND ARCHITECTS  
303 N. MICHIGAN AVE. CHICAGO, IL 60610  
TELEPHONE: 312.467.4000

\AL\100967.DGN - \1\TBO068.DGN - \1\PE001P.DGN  
 9-07-2007, 18:29:57  
 SA\DOCUMENT\0225902\STRUCT\00A\DET\00RMK.DGN  
 ERWINCC