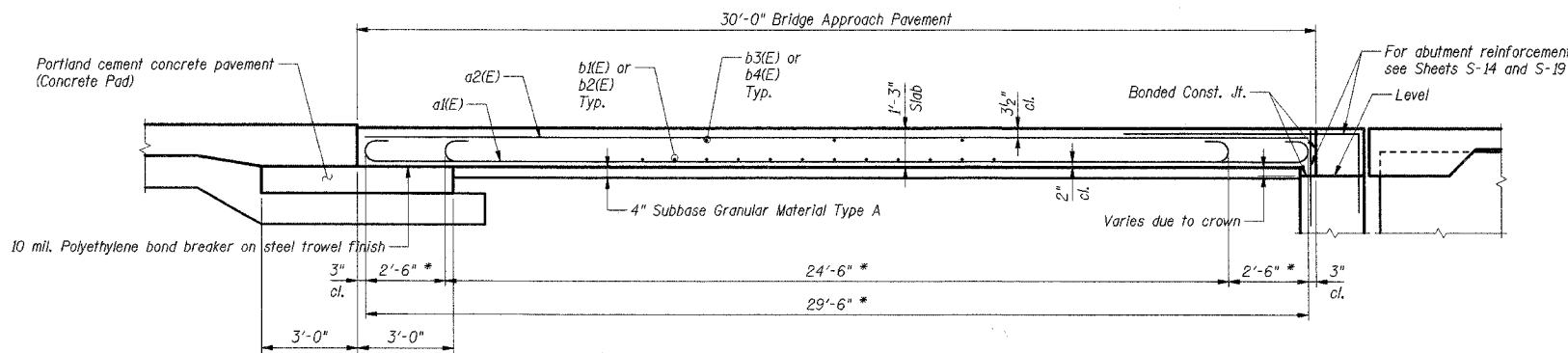


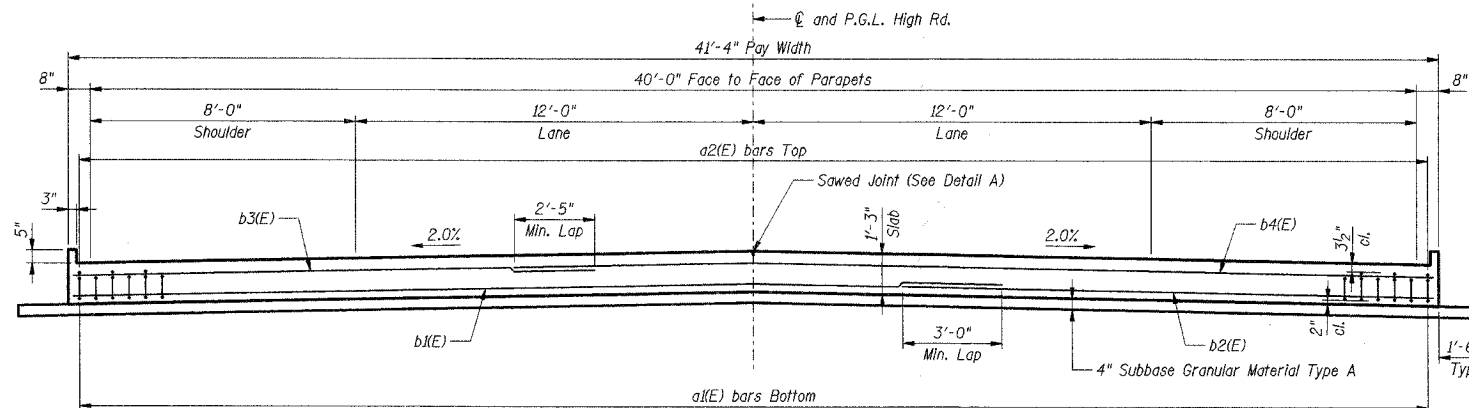
**PLAN**

South Approach Pavement shown, North Approach Pavement similar.



**SECTION A-A**

\* Slagger a1(E) bars as shown on plan, full width.



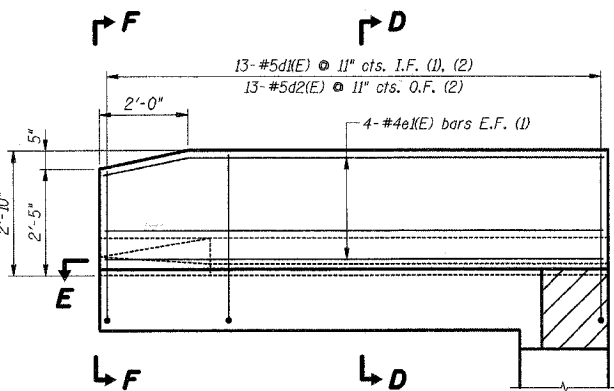
**SECTION B-B**

**BAR LIST**

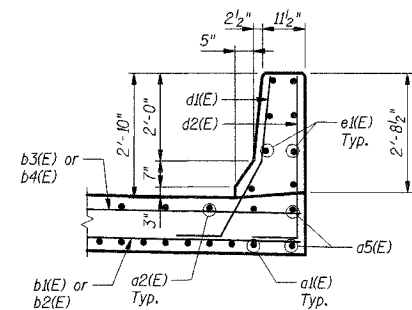
Bar	No.	Size	Length	Shape
a1(E)	166	#9	29'-6"	—
a2(E)	84	#5	29'-6"	—
a3(E)	84	#4	6'-8"	—
a4(E)	84	#4	5'-8"	—
a5(E)	8	#5	9'-6"	—
b1(E)	60	#5	29'-0"	—
b2(E)	60	#5	17'-0"	—
b3(E)	16	#4	16'-8"	—
b4(E)	16	#4	28'-8"	—
d1(E)	52	#5	4'-10"	J
d2(E)	52	#5	4'-8"	J
e1(E)	32	#4	11'-2"	—
h1(E)	48	#5	41'-4"	—

**BILL OF MATERIAL**

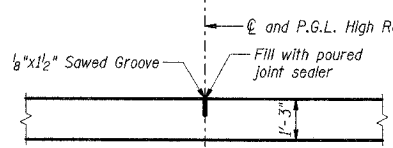
Item	Unit	Total
Bridge Approach Pavement	Sq Yd	280
Concrete Superstructure	Cu Yd	5
Protective Coat	Sq Yd	13
Reinforcement Bars, Epoxy Coated	Pound	594



**PARAPET OUTSIDE ELEVATION**

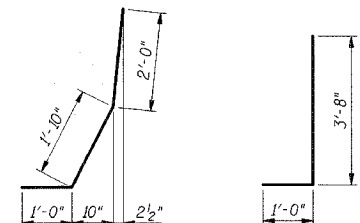


**SECTION D-D**

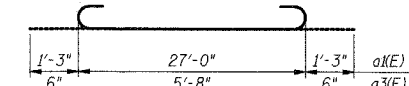


**DETAIL A**

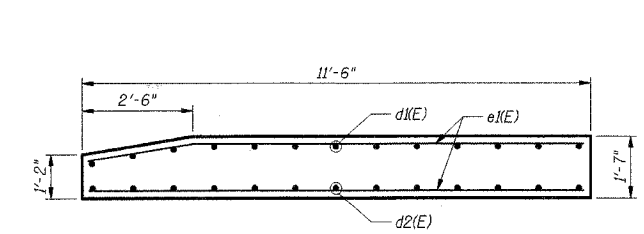
(Reinforcement not shown)



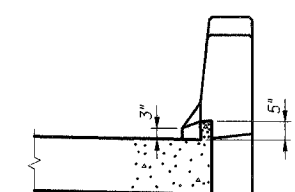
**BAR d1(E) BAR d2(E)**



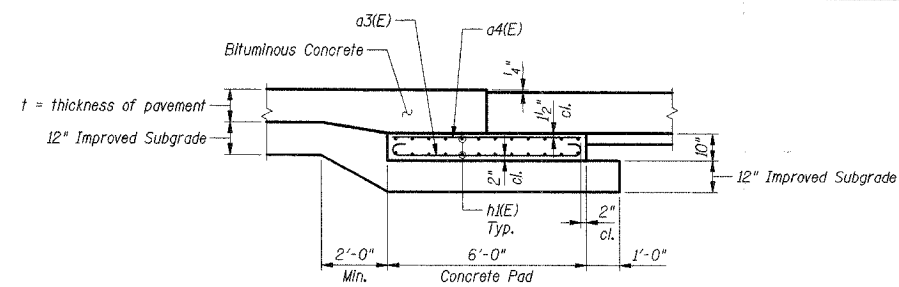
**BARS a1(E) AND a3(E)**



**SECTION E-E**



**VIEW F-F**



**SECTION C-C**

**Reinforcement Notes:**

- (1) Bend bars in field to fit.
- (2) Cut bars in field to fit.

**Notes:**

- 1. Reinforcement bars a5(E), d1(E), and d2(E) paid for as Reinforcement Bars, Epoxy Coated.
- 2. Concrete in approach pavement parapets paid for as Concrete Superstructure.
- 3. Protective coat applied to approach pavement parapets paid for as Protective Coat.
- 4. I.F. denotes Inside Face, O.F. denotes Outside Face, E.F. denotes Each Face.

**SHT. S-25 OF 28**

REVISIONS	
NAME	DATE

LOCKPORT TOWNSHIP HIGHWAY DEPARTMENT  
TR216A HIGH ROAD OVER LONG RUN CREEK  
SECTION 02-11106-01-BR

**BRIDGE APPROACH PAVEMENT**

SCALE: DATE: 9-07-2007 DRAWN BY: CCE CHECKED BY:



TENGL & ASSOCIATES, INC.  
INCORPORATED PROFESSIONAL ENGINEERS  
285 N. MERIDIAN AVE. CHICAGO, IL 60601  
TELEPHONE: 312.644.1000

AL0067.DSN, VPE0067.DSN, YTB0067.DSN, YTB0068.DSN, YTB0069.DSN, YTB0070.DSN, YTB0071.DSN, YTB0072.DSN, YTB0073.DSN, YTB0074.DSN, YTB0075.DSN, YTB0076.DSN, YTB0077.DSN, YTB0078.DSN, YTB0079.DSN, YTB0080.DSN, YTB0081.DSN, YTB0082.DSN, YTB0083.DSN, YTB0084.DSN, YTB0085.DSN, YTB0086.DSN, YTB0087.DSN, YTB0088.DSN, YTB0089.DSN, YTB0090.DSN, YTB0091.DSN, YTB0092.DSN, YTB0093.DSN, YTB0094.DSN, YTB0095.DSN, YTB0096.DSN, YTB0097.DSN, YTB0098.DSN, YTB0099.DSN, YTB0100.DSN  
 9-07-2007, 11:38:49  
 S:\DOCUMENT\023299\2\STRUCT\DRN\AFS\DRN\AFS.DSN