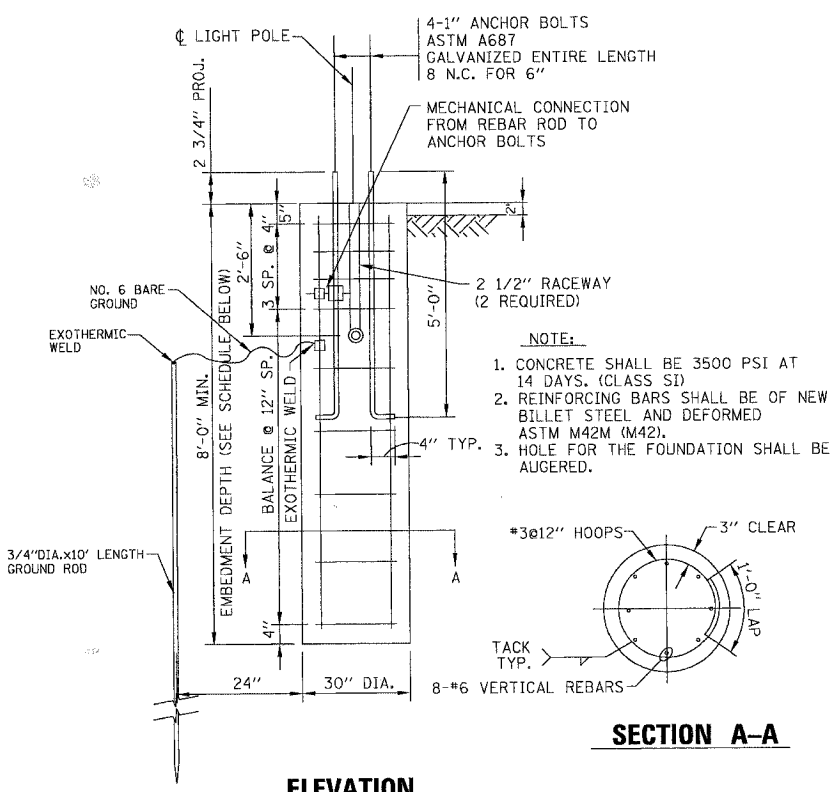
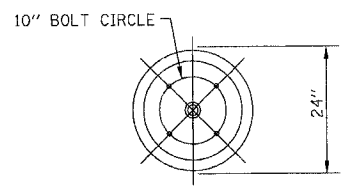
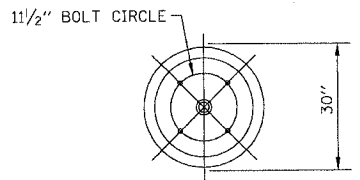


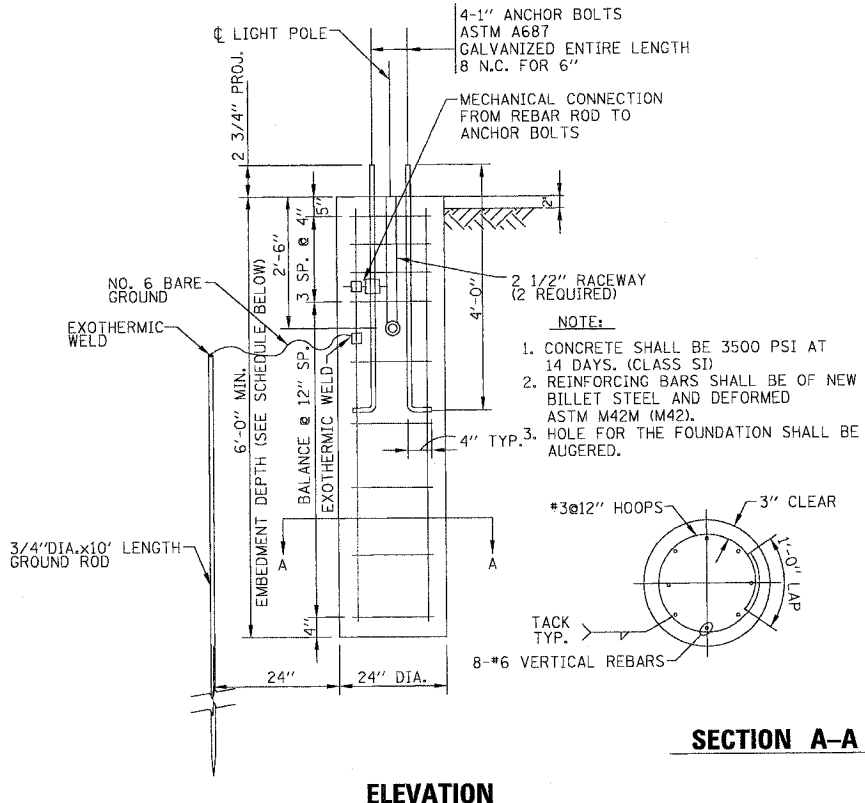
CONTRACT NO. 83962



ELEVATION
ROADWAY LIGHT UNIT TYPICAL

FOUNDATION SCHEDULE		
TYPE OF SOILS		
DESCRIPTION	STANDARDS	EMBEDMENT
SOFT CLAY	Qu = .25-.50 T/FT ²	13'-0"
MEDIUM CLAY	Qu = .25-.50 T/FT ²	10'-0"
DENSE CLAY	Qu = .25-.50 T/FT ²	8'-0"
LOOSE SAND	N = 4-10	10'-6"
MEDIUM SAND	N = 10-30	9'-0"
DENSE SAND	N = 30-50	8'-6"

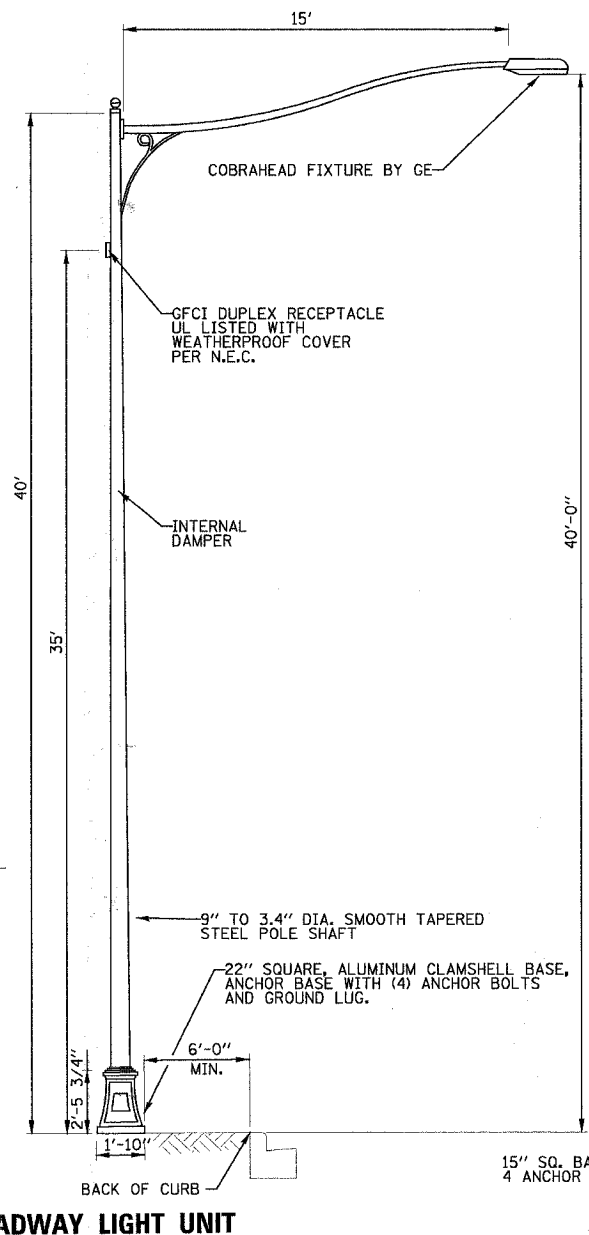
ROADWAY LIGHT UNIT POLE FOUNDATION (TYPICAL)
NO SCALE



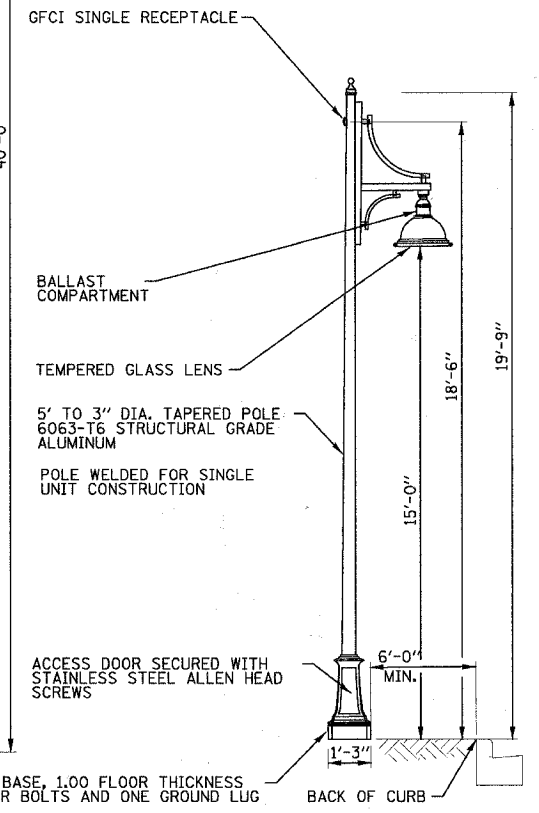
ELEVATION
ORNAMENTAL LIGHT UNIT TYPICAL

FOUNDATION SCHEDULE		
TYPE OF SOILS		
DESCRIPTION	STANDARDS	EMBEDMENT
SOFT CLAY	Qu = .25-.50 T/FT ²	11'-0"
MEDIUM CLAY	Qu = .25-.50 T/FT ²	8'-0"
DENSE CLAY	Qu = .25-.50 T/FT ²	6'-0"
LOOSE SAND	N = 4-10	8'-6"
MEDIUM SAND	N = 10-30	7'-0"
DENSE SAND	N = 30-50	6'-6"

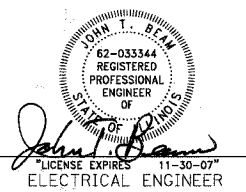
ORNAMENTAL LIGHT UNIT POLE FOUNDATION (TYPICAL)
NO SCALE



ROADWAY LIGHT UNIT



ORNAMENTAL LIGHT UNIT



COPYRIGHT © 2007 BY BAXTER & WOODMAN, INC.
 STATE OF ILLINOIS - PROFESSIONAL DESIGN FIRM
 LICENSE NO. - 84-00027 - EXPIRES 4/23/2009
 5717/2007

CONSULTANTS	REV. NO.	DATE	DESCRIPTION

* REFER TO EQUIPMENT MANUFACTURER'S SHOP DRAWINGS

DRAWING FILE: #FILEA#

BAXTER & WOODMAN
Consulting Engineers

Baxter & Woodman
Crystal Lake, Illinois 815.489.1280
Touso, Illinois 815.773.1870
Burlington, Wisconsin 262.763.7834
Mokena, Illinois 708.478.2090
DeKalb, Illinois 815.787.3111
Oregon, Illinois 847.293.5088
Rockford, Illinois 815.499.1551
Plainfield, Illinois 815.609.7485

CITY OF OAK FOREST, ILLINOIS
FAP 350 CICERO AVENUE IMPROVEMENTS
(155TH ST. TO 159TH ST.)

**STREET LIGHTING
DETAILS**

DESIGNED BY	JLR	SCALE	NONE
DRAWN BY	MAC	PROJECT NO.	060467
CHECKED BY	JTB	SHEET NO.	
DATE	06/21/07		8 OF 10