

**INDEX OF SHEETS**

- SHEET NO.
- COVER SHEET
  - LEGEND, GENERAL NOTES AND SUMMARY OF QUANTITIES
  - TYPICAL SECTIONS
  - HAPP ROAD PLAN (STA. 10+00 TO STA. 20+00)
  - HAPP ROAD PLAN (STA. 20+00 TO STA. 27+00)
  - HAPP ROAD PLAN (STA. 100+00 TO STA. 107+50)
  - HAPP ROAD PLAN (STA. 107+50 TO STA. 111+64.72)
  - MISCELLANEOUS DETAILS ( 1 OF 4)
  - MISCELLANEOUS DETAILS ( 2 OF 4)
  - MISCELLANEOUS DETAILS ( 3 OF 4)
  - MISCELLANEOUS DETAILS ( 4 OF 4)

**CONTACT**

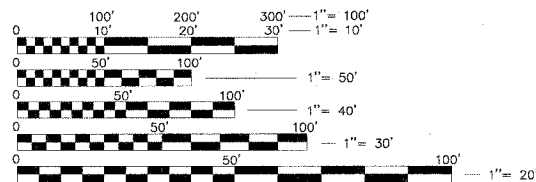
VILLAGE OF NORTHFIELD  
ENGINEERING DIVISION  
CONTACT: ANNE KANE  
OFFICE: 847-784-3550  
FAX: 847-446-4670

BURNS & MCDONNELL  
CONTACT: ANTHONY BRYANT  
OFFICE: 630-724-3200  
FAX: 630-724-3201

**STATE STANDARDS**

- 000001-04 STANDARD SYMBOL, ABBREVIATIONS AND PATTERNS
- 424001-04 CURB RAMPS FOR SIDEWALKS
- 701801-03 LANE CLOSURE, MULTILANE, 1W OR 2W CROSSWALK OR SIDEWALK CLOSURE
- 702001-06 TRAFFIC CONTROL DEVICES

**DESIGN DESIGNATION - FOR HAPP RD**  
COLLECTOR



FULL SIZE PLANS HAVE BEEN PREPARED USING STANDARD ENGINEERING SCALES, REDUCED SIZED PLANS WILL NOT CONFORM TO STANDARD SCALES, IN MAKING MEASUREMENT ON REDUCED PLANS, THE ABOVE SCALES MAY BE USED.

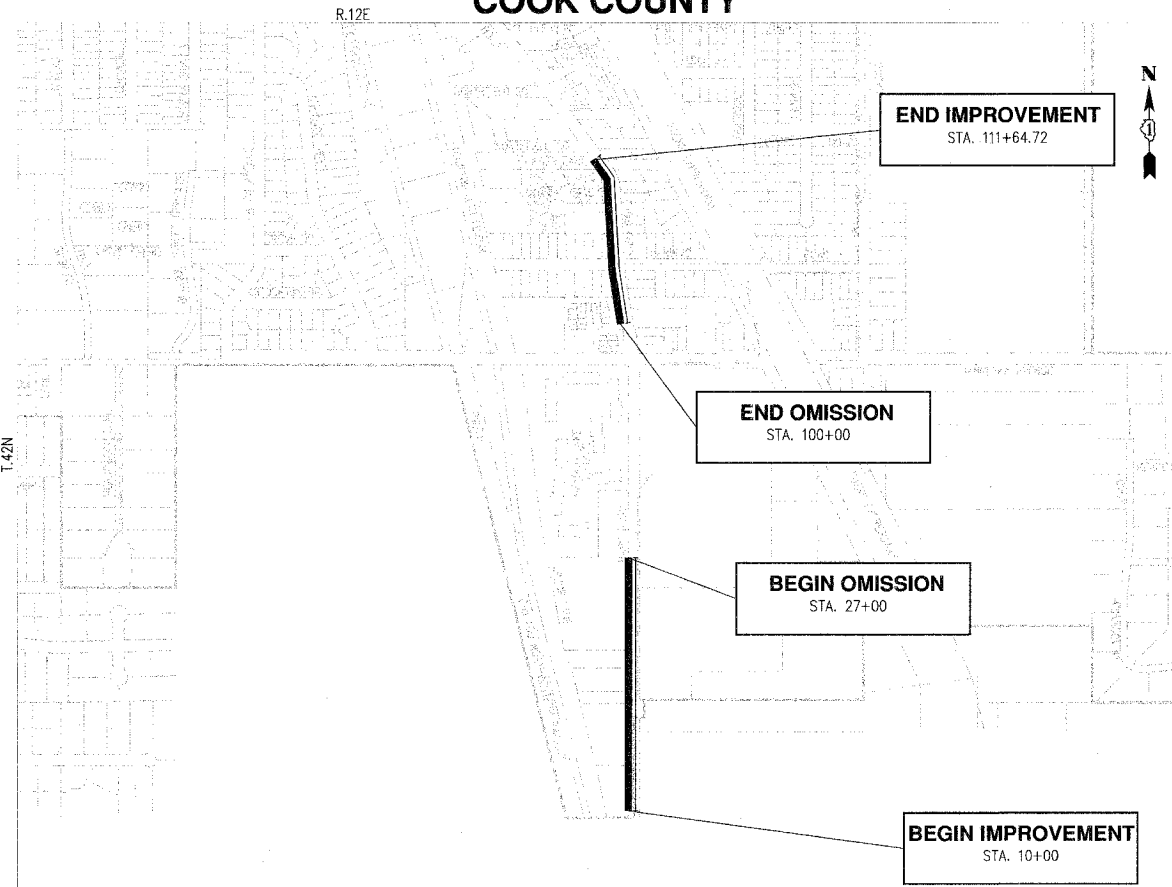
J.U.L.I.E.  
JOINT UTILITY LOCATION INFORMATION FOR EXCAVATION  
1-800-892-0123

**CONTRACT NO.: 83966**

STATE OF ILLINOIS  
DEPARTMENT OF TRANSPORTATION  
DIVISION OF HIGHWAYS

**PLANS FOR PROPOSED  
FEDERAL AID HIGHWAY**

HAPP ROAD SIDEWALK PROJECT  
WILLOW ROAD (FAP 341) TO THE SOUTH CORPORATE LIMIT  
SIDEWALK CONSTRUCTION AND RIGHT-OF-WAY IMPROVEMENT  
SECTION NO.: 06-00045-00-SW  
PROJECT NO.: CMM-8003 (653)  
JOB NO.: C-91-299-06  
VILLAGE OF NORTHFIELD  
COOK COUNTY



GROSS LENGTH OF IMPROVEMENT: 0.75 MILES (3,960 FT.)  
NET LENGTH OF IMPROVEMENT: 0.35 MILES (1,848 FT.)



IL DESIGN FIRM NO.  
184-001310

F.A.P. R.T.E.	SECTION	COUNTY	TOTAL SHEETS	SHEET NO.
-	06-00045-00-SW	COOK	11	1
FEDERAL RD. DIST. NO.	ILLINOIS	FEDERAL AID PROJECT		
CONTRACT: 83966				



STATE OF ILLINOIS  
DEPARTMENT OF TRANSPORTATION  
DIVISION OF HIGHWAYS

Approved 27 July 2007  
Anne E. Kane  
NORTHFIELD VILLAGE ENGINEER

Passed SEPTEMBER 13 2007  
Chris Christopher Holt  
REGION 1 ENGINEER OF LOCAL ROADS AND STREETS

Releasing for Bid Based on Limited Review Sept. 14 2007  
Biane O'Keefe/CJ  
DEPUTY DIRECTOR OF HIGHWAYS  
REGION ENGINEER

ANTHONY J. BRYANT  
002-05612  
LICENSED PROFESSIONAL ENGINEER  
1/21/07  
ANTHONY J. BRYANT, P.E.  
NO. 062-056612  
EXP. DATE: 11/30/2007

**PRINTED BY THE AUTHORITY  
OF THE STATE OF ILLINOIS**

I.D.O.T. ASSOCIATE FIELD ENGINEER: KEVIN STALLWORTH TEL: 847-706-4189  
CONSULTANTS: BURNS & MCDONNELL ENGINEERING, CO. 630-724-3200

F.A.P. RTE.	SECTION	COUNTY	TOTAL SHEETS	SHEET NO.
-	06-00045-00-SW	COOK	11	2
FEDERAL RD. DIST. NO.		ILLINOIS	FEDERAL AID PROJECT	
CONTRACT: 83966				

**LEGEND**

- x— EXISTING FENCE
- - - - - EXISTING R.O.W.
- - - - - LIMITS OF TOP SOIL AND SOD
- ~~~~~ TREE LINE
- ⊗ LIGHT POLE
- ET ELECTRIC TRANSFORMER
- ⊠ET ELECTRICAL TRANSFORMER W/CONC. PAD
- ⊕ TRAFFIC SIGNAL
- POWER POLE
- ⋄ GUY WIRE
- ⊗ TELEPHONE PEDESTAL
- HANDHOLE
- ⊕ FIRE HYDRANT
- LANDSCAPE STONE
- STORM SEWER INLET
- ▲ TREE STUMP
- ⊗ TREE OR SHRUB
- (FOUND) ○ PROPERTY PIPE (FOUND)
- ⊕ SIGN
- PK1 ▲ CONTROL POINT (PK-NAIL)
- ⊕ BM BENCHMARK
- PROPOSED STORM SEWER
- - - - - EXISTING STORM SEWER
- PROPOSED CATCH BASIN
- PROPOSED INLET

SUMMARY OF QUANTITIES				
CODE NO.	ITEM	UNIT	QTY (SFTY-1B)	
20100110	TREE REMOVAL (6 TO 15 UNITS DIAMETER)	UNIT	54	
20100600	HEDGE REMOVAL	UNIT	1	
* 20101200	TREE ROOT PRUNING	EACH	12	
* 20101350	TREE PRUNING (OVER 10 INCH DIAMETER)	EACH	3	
20200100	EARTH EXCAVATION	CU YD	100	
20201200	REMOVAL AND DISPOSAL OF UNSUITABLE MATERIAL	CU YD	185	
* 21101615	TOPSOIL FURNISH AND PLACE, 4"	SQ YD	2,167	
* 25000400	NITROGEN FERTILIZER NUTRIENT	POUND	27	
* 25000500	PHOSPHORUS FERTILIZER NUTRIENT	POUND	27	
* 25000600	POTASSIUM FERTILIZER NUTRIENT	POUND	27	
* 25200110	SODDING, SALT TOLERANT	SQ YD	2,167	
25200200	SUPPLEMENTAL WATERING	UNIT	10	
* 25301500	TREES	EACH	6	
42400200	PORTLAND CEMENT CONCRETE SIDEWALK 5 INCH	SQ FT	8,604	
42400800	DETECTABLE WARNINGS	SQ FT	522	
44000200	DRIVEWAY PAVEMENT REMOVAL	SQ YD	33	
44000600	SIDEWALK REMOVAL	SQ FT	105	
44001700	COMBINATION CONCRETE CURB & GUTTER REMOVAL AND REPLACEMENT	FOOT	20	
55019500	STORM SEWERS, TY 1, REINFORCED CONCRETE CULVERT, STORM DRAIN, AND SEWER PIPE, CLASS IV, 12-INCH	FOOT	35	
55019600	STORM SEWERS, TY 1, REINFORCED CONCRETE CULVERT, STORM DRAIN, AND SEWER PIPE, CLASS IV, 15-INCH	FOOT	331	
55080030	STORM SEWERS, CLASS B, TY 1, 8-INCH	FOOT	10	
55100500	STORM SEWER REMOVAL, 12-INCH	FOOT	45	
55100700	STORM SEWER REMOVAL, 15-INCH	FOOT	25	
60207605	CATCH BASIN TY C, TY 8 GRATE	EACH	4	
60236200	INLET TY A, TY 8 GRATE	EACH	2	
60255500	MANHOLES TO BE ADJUSTED	EACH	1	
60600105	CONCRETE CURB	FOOT	40	
60603800	COMB CON C & G, TY B6.12 (ABUT EX PAVE)	FOOT	176	
67100100	MOBILIZATION	L SUM	1	
70102640	TRAFFIC CONTROL & PROTECTION, STD. 701801	L SUM	1	
* 78000400	THERMOPLASTIC PAVEMENT MARKING, 6-INCH	FOOT	384	
* 78000650	THERMOPLASTIC PAVEMENT MARKING, 24-INCH	FOOT	50	
X0322494	CURB CUT	FOOT	64	
X0322916	PROPOSED STORM SEWER CONNECTION TO EXISTING STORM SEWER	EACH	1	
<del>XX006806</del>	HMA DRIVEWAY PAVEMENT	SQ YD	111	

\* SPECIALTY ITEMS

EARTHWORK SCHEDULE				
LOCATION	REMOVAL AND DISPOSAL OF UNSUITABLE MATERIAL (CU. YD.)	TOPSOIL FURNISH AND PLACE, 4" (SQ. YD.)	EARTH EXCAVATION (CU. YD.)	
HAPP ROAD STA 100+00 TO STA 111+64.72	82	589	25	
HAPP ROAD STA 10+00 TO STA 27+00	103	1575	75	
TOTAL	185	2164	100	

\* TOPSOIL REMOVAL DEPTH ESTIMATED AT 8"

**GENERAL NOTES**

- THE CONTRACTOR SHALL NOTIFY J.U.L.I.E. (800-892-0123) AT LEAST 48 HOURS PRIOR TO CONSTRUCTION FOR LOCATIONS OF UTILITIES, AND SHALL BE RESPONSIBLE FOR THE PROTECTION OF THE SAME.
- THE CONTRACTOR SHALL NOTIFY THE COOK COUNTY DIVISION OF TRANSPORTATION (847-397-4145) A MINIMUM OF 48 HOURS PRIOR TO THE START OF CONSTRUCTION WITHIN THE COUNTY'S RIGHT OF WAY AND WITHIN 300' OF ANY COUNTY MAINTAINED SIGNAL. TRAFFIC SIGNALS AND RELATED EQUIPMENT ARE NOT ON THE J.U.L.I.E. SYSTEM.
- THE CONTRACTOR SHALL NOTIFY THE ENGINEER AND THE VILLAGE OF NORTHFIELD AT LEAST 48 HOURS IN ADVANCE OF CONSTRUCTION. NO UNDERGROUND WORK SHALL BE COVERED UNTIL IT HAS BEEN INSPECTED. APPROVAL TO PROCEED MUST BE OBTAINED FROM THE ENGINEER PRIOR TO POURING ANY CONCRETE AFTER FORMS HAVE BEEN SET. THE CONTRACTOR IS RESPONSIBLE FOR OBTAINING ALL NECESSARY PERMITS FROM COOK COUNTY D.O.T.
- WRITTEN DIMENSIONS ON THESE DRAWINGS SHALL TAKE PRECEDENCE OVER SCALED DIMENSIONS. CONTRACTORS SHALL VERIFY AND BE RESPONSIBLE FOR ALL ELEVATIONS, DIMENSIONS, AND CONDITIONS ON THE JOB. THE ENGINEER SHALL BE NOTIFIED AS SOON AS POSSIBLE OF ANY VARIATIONS FROM THE DIMENSIONS AND CONDITIONS SHOWN ON THESE DRAWINGS.
- ALL WORK FOR WHICH THERE IS NO SPECIFIC PAY ITEM SHALL BE CONSIDERED INCIDENTAL TO THE CONTRACT AND NO SEPARATE PAYMENT SHALL BE MADE WITH RESPECT TO INCIDENTAL WORK.
- ANY DELAY OR EXTRA COST TO THE CONTRACTOR CAUSED BY PIPELINES OR OTHER UNDERGROUND STRUCTURES OR OBSTRUCTIONS WHICH ARE NOT SHOWN ON THE DRAWINGS OR FOUND IN LOCATIONS DIFFERENT FROM THOSE INDICATED, SHALL NOT CONSTITUTE A CLAIM FOR EXTRA WORK, ADDITIONAL PAYMENT, OR DAMAGES AND SHALL BE CONSIDERED INCIDENTAL TO THE CONTRACT.
- THE CONTRACTOR SHALL BE RESPONSIBLE FOR THE PROTECTION OF ALL PUBLIC AND PRIVATE UTILITIES, EVEN THOUGH THEY MAY NOT BE SHOWN ON THE DRAWINGS. ANY UTILITY DAMAGES DURING CONSTRUCTION SHALL BE REPAIRED OR REPLACED TO THE SATISFACTION OF THE OWNER AT THE CONTRACTOR'S EXPENSE.
- THE CONTRACTOR SHALL BE RESPONSIBLE FOR REMOVING IMMEDIATELY ANY MUD, DIRT, OR DEBRIS DEPOSITED ON ROADWAYS FROM ANY VEHICLES EXITING OR ENTERING THE SITE.
- IT IS THE CONTRACTORS RESPONSIBILITY TO GUARD AND PROTECT NEWLY POURED CONCRETE AGAINST ANY FOREIGN MARKINGS, GRAFFITI OR OTHER DAMAGE, AND AT HIS EXPENSE, REPLACE ANY SIDEWALK NOT ACCEPTABLE TO THE ENGINEER.
- ON HAPP ROAD DAILY LANE CLOSURES ARE PERMITTED BETWEEN 9:00 A.M. AND 4:00 P.M. ONLY. OTHER LANE CLOSURES SHALL BE RESTRICTED TO THE HOURS OF 8:00 A.M. TO 5:00 P.M. ALL LANES SHALL BE KEPT OPEN FOR THE REMAINING PART OF EVERYDAY.
- TRAFFIC CONTROL SHALL CONFORM TO IDOT'S HIGHWAY STANDARDS AND THE "MANUAL ON UNIFORM TRAFFIC CONTROL DEVICES FOR STREETS AND HIGHWAYS" AT ALL TIMES DURING CONSTRUCTION. TRAFFIC CONTROL SHALL INCLUDE ADVANCE WARNING LANE CLOSURE SIGNAGE, AN ARROW BOARD AND TYPE I BARRICADES WITH SANDBAGS.
- THE CONTRACTOR SHALL COORDINATE CONSTRUCTION ACTIVITIES WITH UTILITY COMPANIES AND THE VILLAGE OF NORTHFIELD.
- PROJECT IS LOCATED NEAR ZONE X AND ZONE A FLOOD PLAIN. NO FILL IS TO BE LEFT ONSITE.

**NOTE:**  
PROVIDE THERMOPLASTIC PAVEMENT MARKING FOR PEDESTRIAN CROSSWALK AND STOP BARS AT THE FOLLOWING INTERSECTIONS:

**HAPP ROAD AND NEW TRIER HIGH SCHOOL PARKING LOT**  
54 LF THERMOPLASTIC PAVEMENT MARKING-LINE, 6" WHITE  
49 LF THERMOPLASTIC PAVEMENT MARKING-LINE, 6" WHITE  
59 LF THERMOPLASTIC PAVEMENT MARKING-LINE, 6" WHITE

**HAPP ROAD AND HARDING ROAD**  
66 LF THERMOPLASTIC PAVEMENT MARKING-LINE, 6" WHITE  
13 LF THERMOPLASTIC PAVEMENT MARKING-LINE, 24" WHITE

**HAPP ROAD AND PRIVATE ROAD WAY**  
81 LF THERMOPLASTIC PAVEMENT MARKING-LINE, 6" WHITE  
22 LF THERMOPLASTIC PAVEMENT MARKING-LINE, 24" WHITE

**HAPP ROAD AND HOLDER LANE**  
75 LF THERMOPLASTIC PAVEMENT MARKING-LINE, 6" WHITE  
15 LF THERMOPLASTIC PAVEMENT MARKING-LINE, 24" WHITE

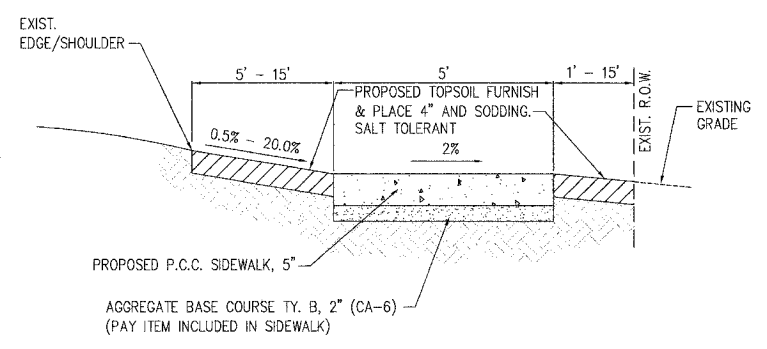


date	05-15-07	detailed	D. CHAVEZ
designed	J.LeROY	checked	A.BRYANT



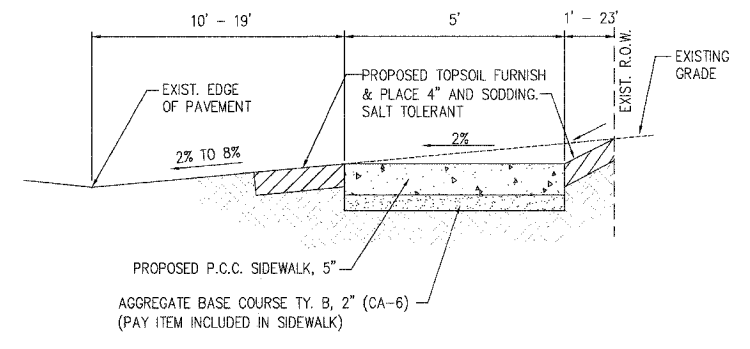
VILLAGE of NORTHFIELD 2005 HAPP ROAD CMAQ LEGEND, GENERAL NOTES, EARTHWORK SUMMARY AND SUMMARY OF QUANTITIES	
project	contract
42272	
drawing	rev.
<b>G002</b>	
sheet 2	of 11 sheets
file 42272G002.dwg	

F.A.P. RTE.	SECTION	COUNTY	TOTAL SHEETS	SHEET NO.
-	06-00045-00-SW	COOK	11	3
FEDERAL RD. DIST. NO.		ILLINOIS	FEDERAL AID PROJECT	
CONTRACT: 83966				



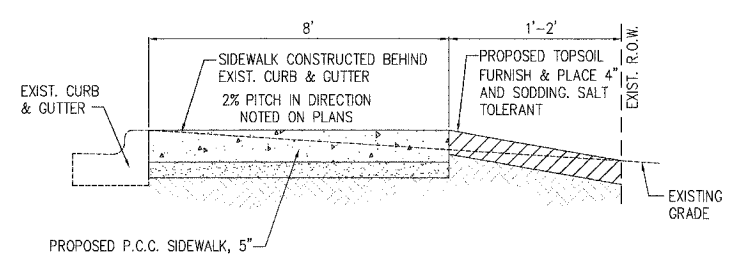
**EXISTING & PROPOSED TYPICAL SECTION**

HAPP ROAD  
STA. 104+90 TO STA. 107+00  
(SHEET 8 OF 9)



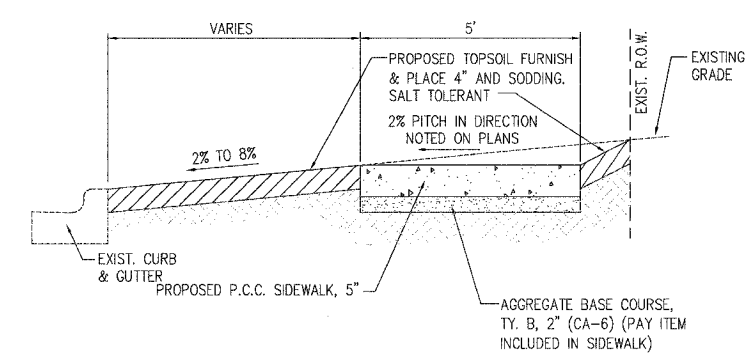
**EXISTING & PROPOSED TYPICAL SECTION**

HAPP ROAD  
STA. 107+00 TO STA. 110+40  
(SHEETS 9 OF 9)  
HAPP ROAD  
STA. 100+25 TO STA. 104+90  
(SHEETS 8 OF 9)



**EXISTING & PROPOSED TYPICAL SECTION**

HAPP ROAD  
STA. 19+20 TO STA. 21+90  
(SHEETS 6 AND 7 OF 9)



**EXISTING & PROPOSED TYPICAL SECTION**

HAPP ROAD  
STA. 24+95 TO STA. 26+10  
(SHEET 7 OF 9)  
HAPP ROAD  
STA. 15+40 TO STA. 19+20  
(SHEET 6 OF 9)

HMA MIXTURE REQUIREMENTS		
PAY ITEM	AC TYPE	VOIDS
HMA DRIVEWAY HOT MIX ASPHALT SURFACE COURSE, MIX 'C', N50 (IL 9.5MM) 2"	PG 64-22	4% @ 50 GYR
HMA BASE CSE (HMA BINDER IL-19MM) PE=6" CE=8"	PG 64-22*	4% @ 50 GYR

THE UNIT WEIGHT USED TO CALCULATE ALL HMA SURFACE MIXTURE QUANTITIES IS 112 LBS/SQ YD/IN.  
\* WHEN RAP EXCEEDS 20% THE NEW ASPHALT BINDER IN THE MIX SHALL BE PG 58-22

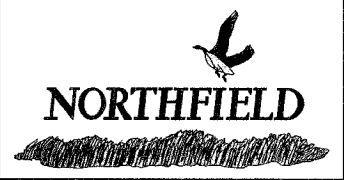
Scale For Microfilming

Inches

COPYRIGHT © 2007 BURNS & MCDONNELL ENGINEERING COMPANY, INC.

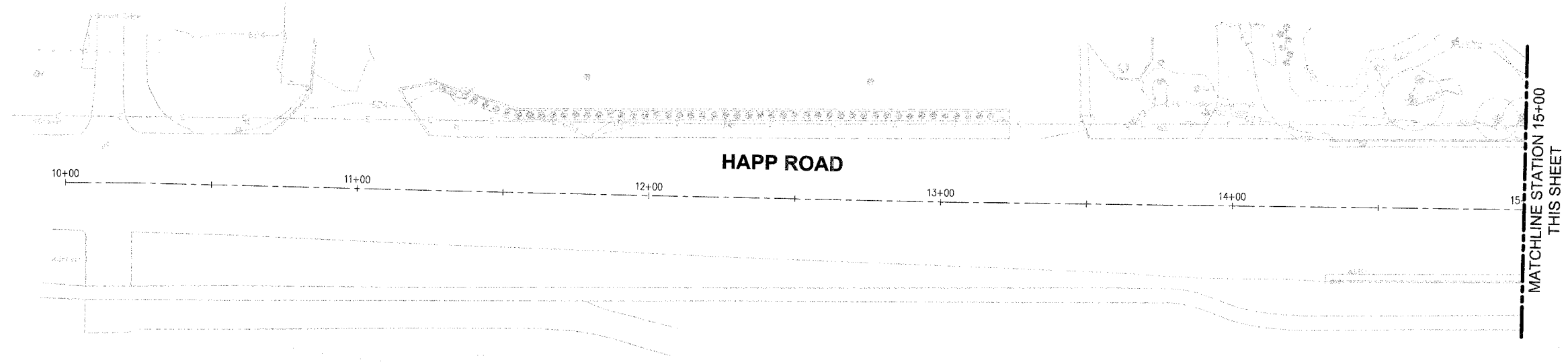
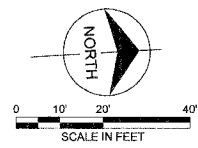


date	05-15-07	detailed	D. CHAVEZ
designed	J.LeROY	checked	A.BRYANT



VILLAGE of NORTHFIELD	
2005 HAPP ROAD CMAQ TYPICAL SECTIONS	
project	contract
42272	
drawing	rev.
<b>G003</b>	
sheet 3	of 11 sheets
file 42272G003.dwg	

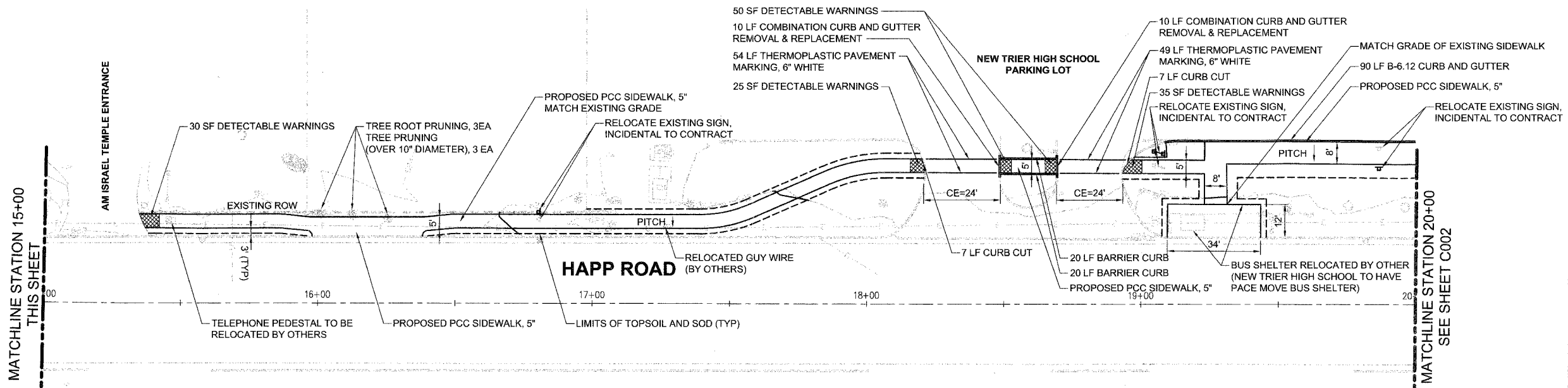
F.A.P. RTE.	SECTION	COUNTY	TOTAL SHEETS	SHEET NO.
-	06-0045-00-SW	COOK	11	4
FEDERAL RD. DIST. NO.	ILLINOIS	FEDERAL AID PROJECT		
CONTRACT: 83966				



Millimeters

Inches

Scale For Microfilming

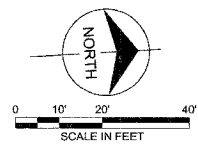


date	05-15-07	detailed	D. CHAVEZ
designed	J.LeROY	checked	A.BRYANT

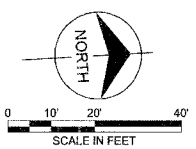
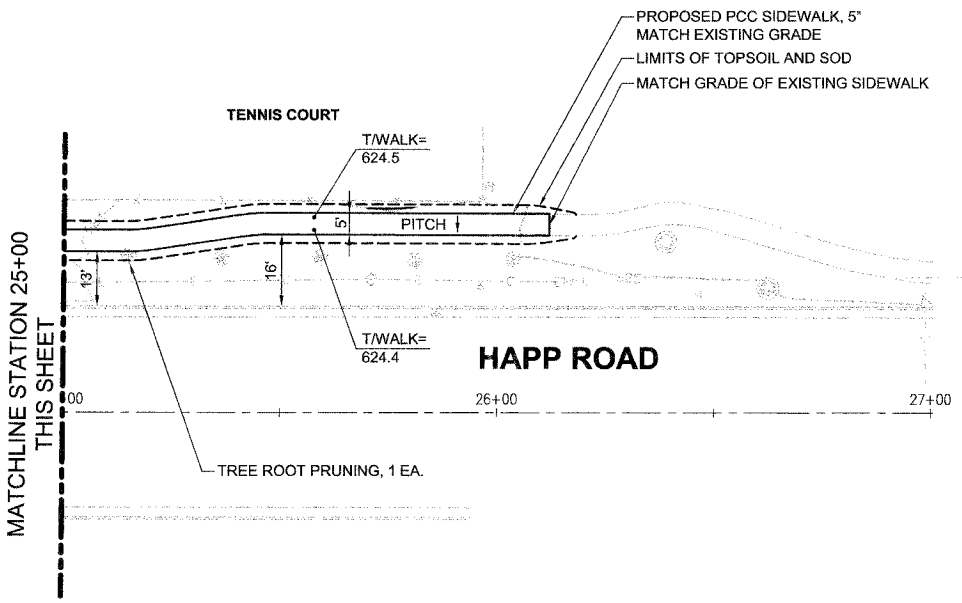
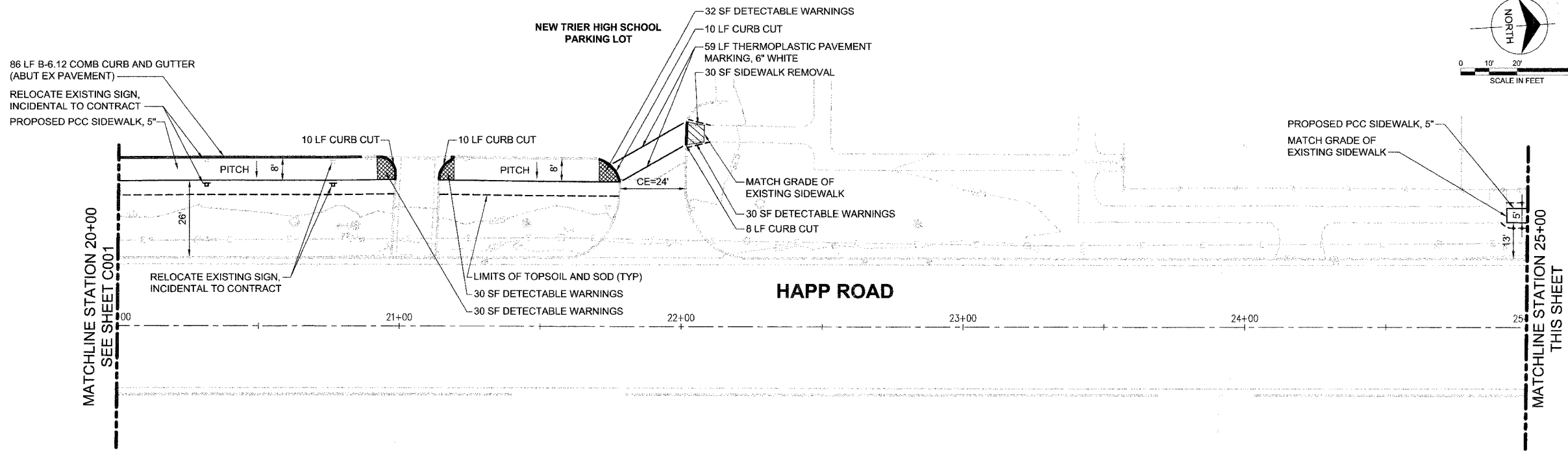
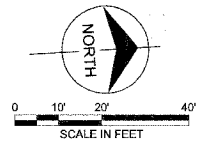


VILLAGE of NORTHFIELD  
2005 HAPP ROAD CMAQ

project	42272	contract	
drawing	<b>C001</b>	rev.	
sheet	4	of	11 sheets
file	42272C001.dwg		



F.A.P. RTE.	SECTION	COUNTY	TOTAL SHEETS	SHEET NO.
-	06-00045-00-SW	COOK	11	5
FEDERAL RD. DIST. NO.		ILLINOIS	FEDERAL AID PROJECT	
CONTRACT: 83966				



Scale For Microfilming

Inches

COPYRIGHT © 2007 BURNS & MCDONNELL ENGINEERING COMPANY, INC.

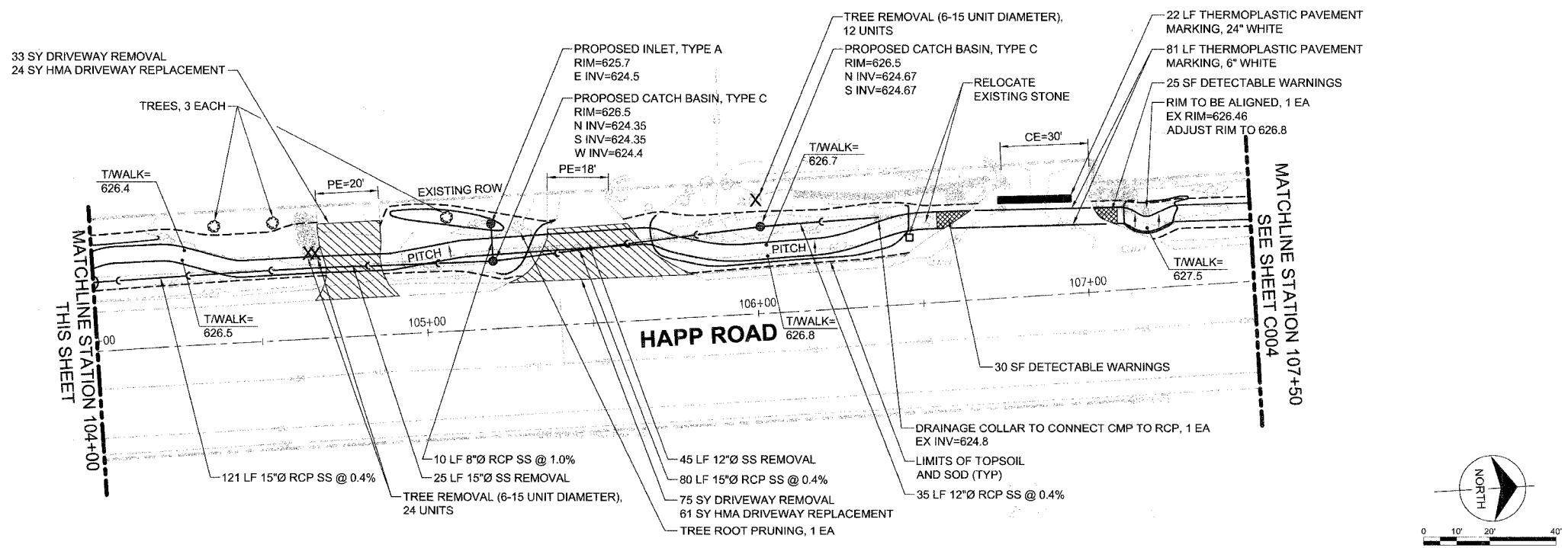
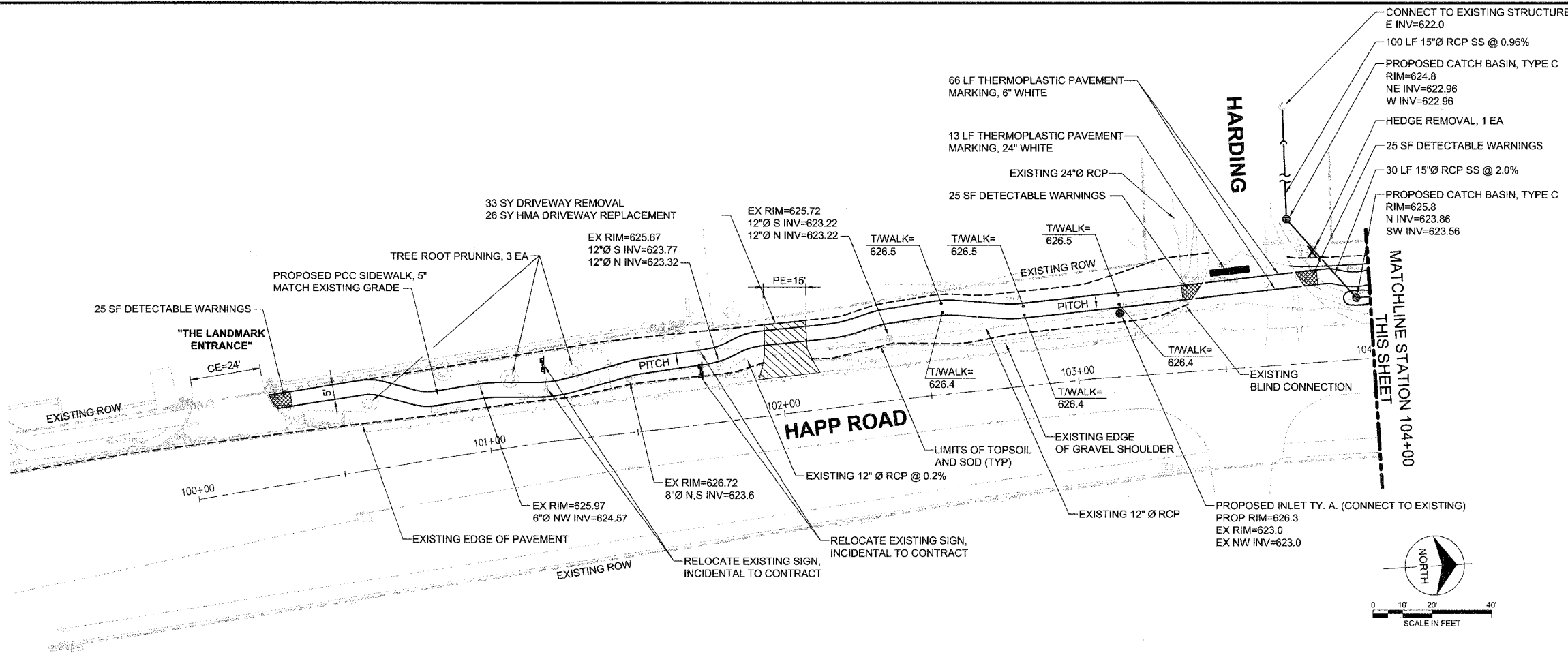


date	05-15-07	detailed	D. CHAVEZ
designed	J.LeROY	checked	A.BRYANT



VILLAGE of NORTHFIELD	
2005 HAPP ROAD CMAQ	
project	42272
contract	
drawing	<b>C002</b>
sheet	5 of 11 sheets
file	42272C002.dwg

F.A.P. RTE.	SECTION	COUNTY	TOTAL SHEETS	SHEET NO.
06-00045-00-SW	COOK	ILLINOIS	11	6
FEDERAL RD. DIST. NO.		FEDERAL AID PROJECT		
CONTRACT: 83966				



Scale For Microfilming  
 Millimeters  
 Inches  
 COPYRIGHT © 2007 BURNS & MCDONNELL ENGINEERING COMPANY, INC.



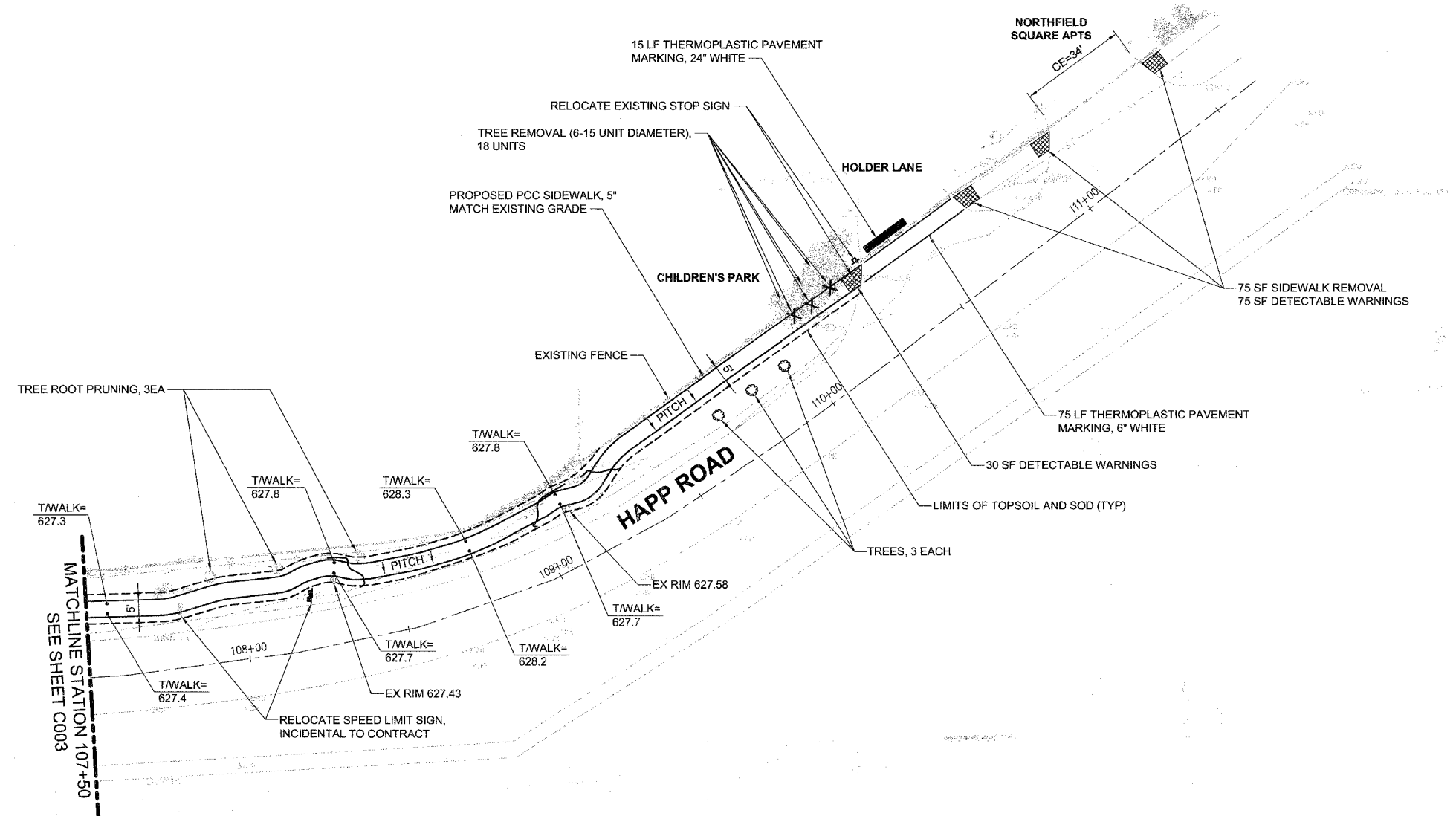
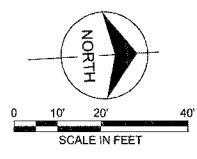
date	05-15-07	detailed	D. CHAVEZ
designed	J. LeROY	checked	A. BRYANT



VILLAGE of NORTHFIELD  
2005 HAPP ROAD CMAQ

project	42272	contract	
drawing	C003	rev.	
sheet	6	of	11 sheets
file 42272C003.dwg			

F.A.P. RTE.	SECTION	COUNTY	TOTAL SHEETS	SHEET NO.
-	06-00045-00-SW	COOK	11	7
FEDERAL RD. DIST. NO.	ILLINOIS FEDERAL AID PROJECT			
CONTRACT: 83966				



Scale For Microplotting  
Millimeters  
Inches

COPYRIGHT © 2007 BURNS & McDONNELL ENGINEERING COMPANY, INC.

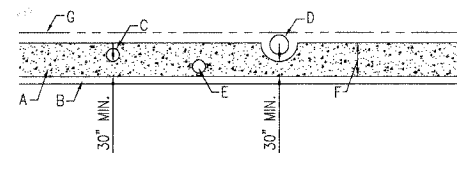


date 05-15-07	detailed D. CHAVEZ
designed J.LeROY	checked A.BRYANT



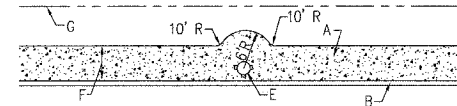
VILLAGE of NORTHFIELD	
2005 HAPP ROAD CMAQ	
project 42272	contract
drawing <b>C004</b>	rev.
sheet 7 of 11 sheets	file 42272C004.dwg

F.A.P. RTE.	SECTION	COUNTY	TOTAL SHEETS	SHEET NO.
-	06-00045-00-SW	COOK	11	8
FEDERAL RD. DIST. NO.	ILLINOIS	FEDERAL AID PROJECT		
CONTRACT: 83966				



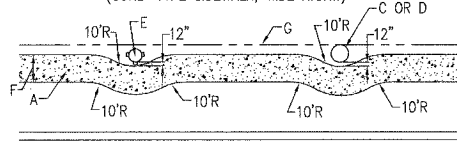
IMMOVABLE OBJECTS  
(CURB-TYPE SIDEWALK, NARROW R.O.W.)

- CONSTRUCTION NOTE:**
- A. SIDEWALK
  - B. CURB
  - C. SERVICE POLE, SEE NOTES 1 AND 3.
  - D. TREE TRUNK, SEE NOTE 1
  - E. FIRE HYDRANT, SEE NOTES 1, 2, AND 3.
  - F. SIDEWALK WIDTH.
  - G. RIGHT-OF-WAY (R.O.W.)



IMMOVABLE OBJECTS  
(CURB-TYPE SIDEWALK, WIDE R.O.W.)

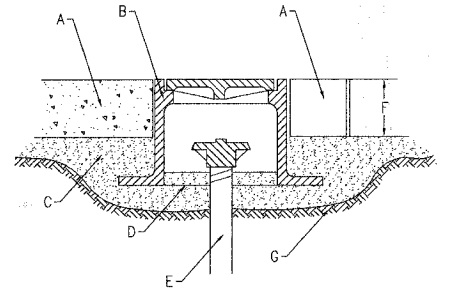
- GENERAL NOTES:**
1. A FIRE HYDRANT, SERV. POLE OR TREE TRUNK SHALL BE CONSIDERED IMMOVABLE ONLY WHEN DIRECTED BY THE VILLAGE ENGINEER.
  2. THE VILLAGE OF NORTHFIELD WATER DEPT. SHALL BE CONTACTED AS SOON AS POSSIBLE WHENEVER A FIRE HYDRANT IS FOUND TO BE IN THE PATH OF A NEW SIDEWALK, SO THAT THE FIRE HYDRANT CAN BE RELOCATED, IF POSSIBLE.
  3. WHEN A SERVICE POLE OR FIRE HYDRANT IS LOCATED WITHIN THE SIDEWALK AREA, AND IS CONSIDERED IMMOVABLE, A 1/2" EXPANSION JOINT SHALL BE INSTALLED ENCIROLING THE OBJECT.



IMMOVABLE OBJECTS  
(SIDEWALK WITH PARKWAY)

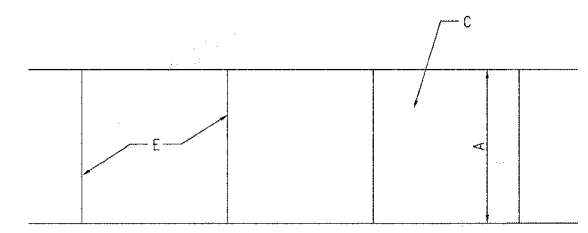
**SIDEWALK OBSTRUCTIONS**  
N.T.S.

Scale For Manufacturing  
Millimeters  
Inches

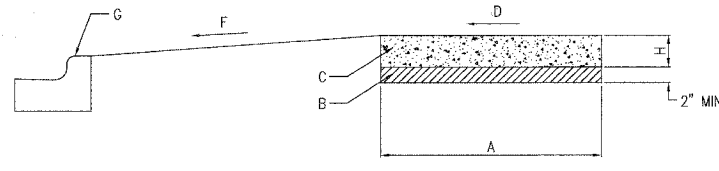


**SERVICE BOX INSTALLATION  
IN PAVEMENT AREAS**  
N.T.S.

- CONSTRUCTION NOTES:**
- A. STAMPED CONCRETE PAVEMENT OR CONCRETE BRICK PAVERS.
  - B. FOR CONCRETE-ROUND FRAME SHALL BE EQUIVALENT TO TYLER 6895 VALVE BOX. FOR BRICK PAVERS-SQUARE FRAME SHALL BE EQUIVALENT TO NEENAH B-1978-1 INSPECTION FRAME.
  - C. COMPACTED AGGREGATE BASE, MIN. 2".
  - D. SERVICE BOX LID WITH BRASS PENTAGON HEAD PLUG, TOP TO BE MARKED "WATER".
  - E. SERVICE BOX EXTENSION.
  - F. SERVICE BOX SET 4"-6" BELOW FINISHED GRADE.
  - G. SUBGRADE.



**PLAN**



**PROFILE**

**SIDEWALK DETAIL**

**CONSTRUCTION NOTES**

- A. 5' NORMAL WIDTH OR AS INDICATED ON PLANS
- B. AGGREGATE BASE COURSE, TYPE B, 2"
- C. P.C.C. SIDEWALK
- D. SLOPE 1/4" PER FOOT TO STREET SIDE, OR AS NOTED ON PLAN
- E. JOINTS, SEE NOTES 3 AND 4
- F. SLOPE 2% TO 8% TOWARDS STREET
- G. CURB AND GUTTER
- H. CONCRETE THICKNESS, SEE NOTE 1

**GENERAL NOTES**

1. STANDARD THICKNESS OF CONCRETE SHALL BE A MINIMUM OF 5".
2. WHERE WOODEN FORMS ARE USED, 2x4'S ARE NOT ALLOWED. ONLY 2x6'S SHALL BE USED.
3. PREFORMED 3/4" EXPANSION JOINTS SHALL BE CONSTRUCTED AT MAX. SPACING OF 40'.
4. FORMED OR SAW-CUT CONTRACTION JOINTS SHALL BE SPACED GENERALLY 5' APART, BUT NO LESS THAN 4' AND NO MORE THAN 6'.
5. 1/2" EXPANSION JOINTS SHALL BE INSTALLED WHERE SIDEWALK ABUTS BUILDINGS, TRAFFIC SIGNAL FOUNDATIONS, SERVICE POLES, AND OTHER IMMOVABLE STRUCTURES.
6. CONCRETE TO BE MINIMUM SI.

COPYRIGHT © 2007 BURNS & McDONNELL ENGINEERING COMPANY, INC.



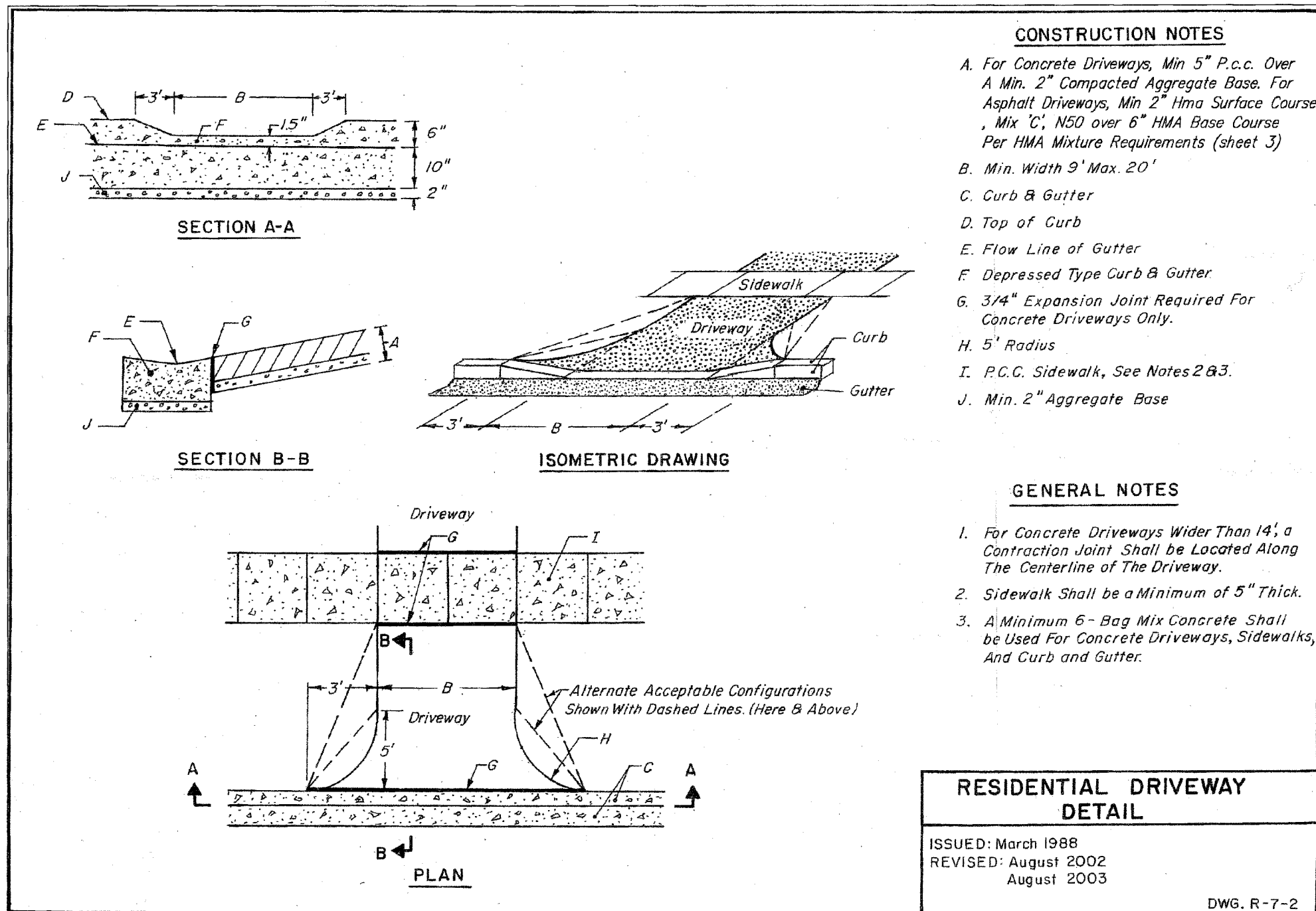
date 05-15-07	detailed D. CHAVEZ
designed J.LeROY	checked A.BRYANT



VILLAGE of NORTHFIELD	
2005 HAPP ROAD CMAQ	
MISCELLANEOUS DETAILS (1 OF 4)	
project 42272	contract
drawing <b>C005</b>	rev.
sheet 8	of 11 sheets
file 42272C005.dwg	



F.A.P. RTE.	SECTION	COUNTY	TOTAL SHEETS	SHEET NO.
-	06-00045-00-SW	COOK	11	9
FEDERAL RD. DIST. NO.	ILLINOIS FEDERAL AID PROJECT			
CONTRACT: 83966				



**CONSTRUCTION NOTES**

- A. For Concrete Driveways, Min 5" P.c.c. Over A Min. 2" Compacted Aggregate Base. For Asphalt Driveways, Min 2" Hma Surface Course, Mix 'C', N50 over 6" HMA Base Course Per HMA Mixture Requirements (sheet 3)
- B. Min. Width 9' Max. 20'
- C. Curb & Gutter
- D. Top of Curb
- E. Flow Line of Gutter
- F. Depressed Type Curb & Gutter
- G. 3/4" Expansion Joint Required For Concrete Driveways Only.
- H. 5' Radius
- I. P.C.C. Sidewalk, See Notes 2 & 3.
- J. Min. 2" Aggregate Base

**GENERAL NOTES**

- 1. For Concrete Driveways Wider Than 14', a Contraction Joint Shall be Located Along The Centerline of The Driveway.
- 2. Sidewalk Shall be a Minimum of 5" Thick.
- 3. A Minimum 6-Bag Mix Concrete Shall be Used For Concrete Driveways, Sidewalks, And Curb and Gutter.

**RESIDENTIAL DRIVEWAY  
DETAIL**

ISSUED: March 1988  
 REVISED: August 2002  
 August 2003

DWG. R-7-2

Scale For Microfilming

Inches

COPYRIGHT © 2007 BURNS & MCDONNELL ENGINEERING COMPANY, INC.



date 05-15-07	detailed D. CHAVEZ
designed J.LeROY	checked A.BRYANT



VILLAGE of NORTHFIELD	
2005 HAPP ROAD CMAQ MISCELLANEOUS DETAILS (2 OF 4)	
project 42272	contract
drawing <b>C006</b>	rev.
sheet 9	of 11 sheets
file 42272C006.dwg	

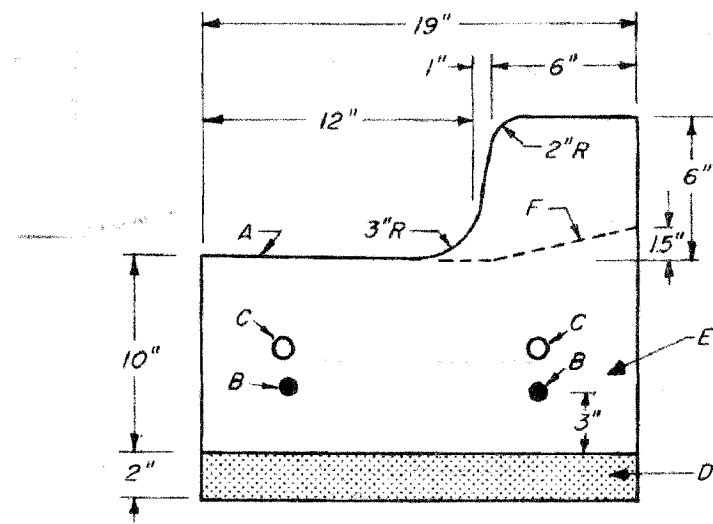
F.A.P. RTE.	SECTION	COUNTY	TOTAL SHEETS	SHEET NO.
--	06-00045-00-SW	COOK	11	10
FEDERAL RD. DIST. NO.	ILLINOIS	FEDERAL AID PROJECT		
CONTRACT: 83966				

**CONSTRUCTION NOTES**

- A. Slope 3/4" / Ft.
- B. 2 - #4 Bars Continuous, Optional.
- C. 2 Dowel Bars at Expansion Joints.
- D. Min. 2" Aggr. Base.
- E. Min. 6-Bag Mix Concrete.
- F. Depressed Curb Configuration.

**GENERAL NOTES**

- 1. Standard Curb and Gutter Shall be Used For All New Construction. Roll-Type Curb and Gutter is Not Acceptable.
- 2. Preformed Expansion Joints of 3/4" Thickness Shall be Spaced a Maximum of 40' Apart, and at All Radius Points and 4' Either Side of Inlets.
- 3. Formed or Saw-Cut Contraction Joints Shall be Spaced a Maximum of 10' Apart and Filled with a Silicone Sealant.
- 4. Concrete Barrier-Type Curb and Gutter Shall be Provided for All Parking Lots Accomodating Five (5) or More Parking Spaces.



**STANDARD CURB AND GUTTER**

**CURB AND GUTTER DETAIL**

ISSUED: March 1988  
 REVISED: August 2003

DWG. R-6-1

Scale For Manufacturing  
 Millimeters  
 Inches

COPYRIGHT © 2007 BURNS & MCDONNELL ENGINEERING COMPANY, INC.

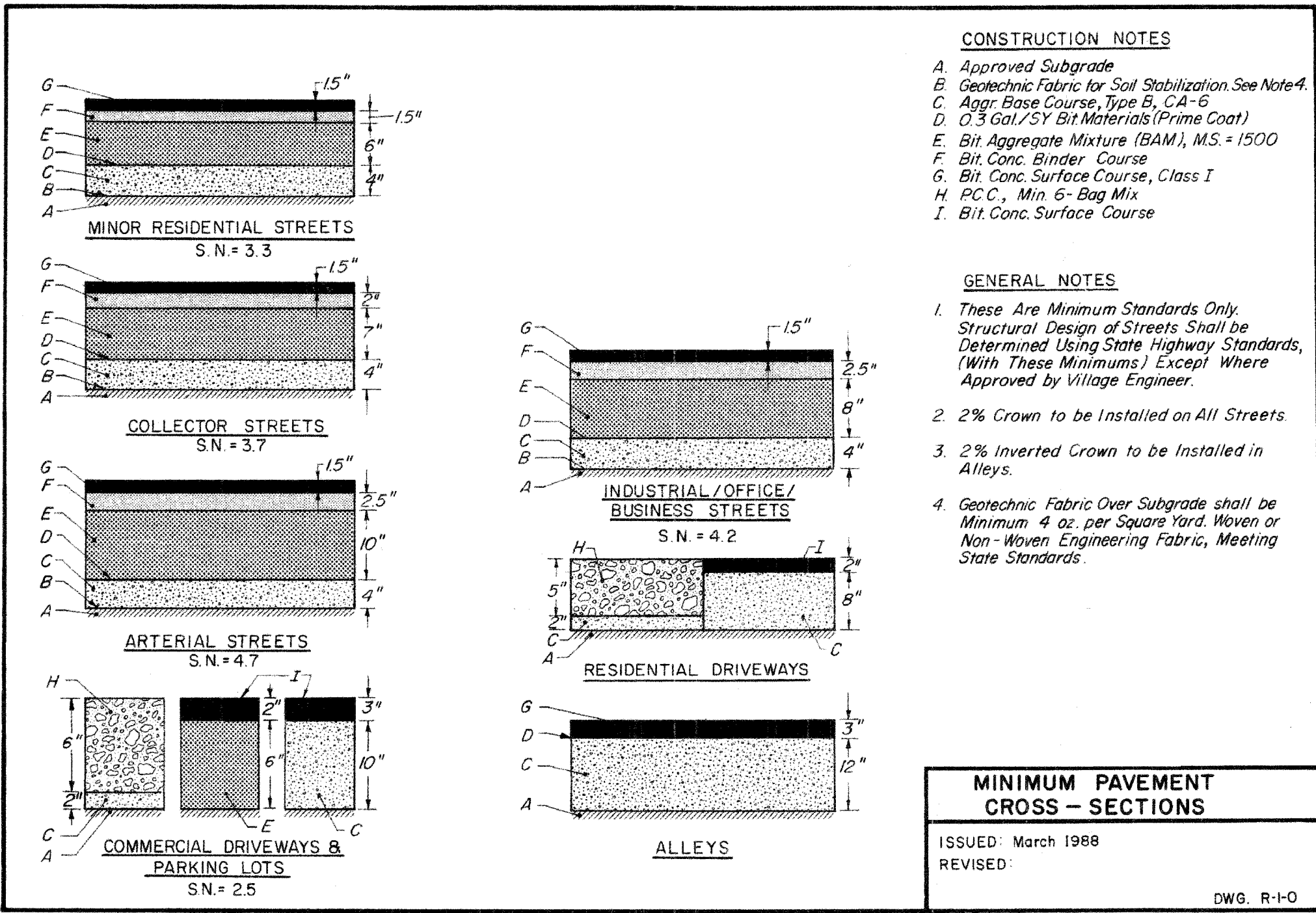


date 05-15-07	detailed D. CHAVEZ
designed J.LeROY	checked A.BRYANT



VILLAGE of NORTHFIELD	
2005 HAPP ROAD CMAQ MISCELLANEOUS DETAILS (3 OF 4)	
project 42272	contract
drawing <b>C007</b>	rev.
sheet 10	of 11 sheets
file 42272C007.dwg	

F.A.P. RTE.	SECTION	COUNTY	TOTAL SHEETS	SHEET NO.
-	06-0045-00-SW	COOK	11	11
FEDERAL RD. DIST. NO.	ILLINOIS		FEDERAL AID PROJECT	
CONTRACT: 83966				



- CONSTRUCTION NOTES**
- A. Approved Subgrade
  - B. Geotechnic Fabric for Soil Stabilization. See Note 4.
  - C. Aggr. Base Course, Type B, CA-6
  - D. 0.3 Gal./SY Bit Materials (Prime Coat)
  - E. Bit. Aggregate Mixture (BAM), M.S. = 1500
  - F. Bit. Conc. Binder Course
  - G. Bit. Conc. Surface Course, Class I
  - H. P.C.C., Min. 6- Bag Mix
  - I. Bit. Conc. Surface Course

- GENERAL NOTES**
1. These Are Minimum Standards Only. Structural Design of Streets Shall be Determined Using State Highway Standards, (With These Minimums) Except Where Approved by Village Engineer.
  2. 2% Crown to be Installed on All Streets.
  3. 2% Inverted Crown to be Installed in Alleys.
  4. Geotechnic Fabric Over Subgrade shall be Minimum 4 oz. per Square Yard. Woven or Non-Woven Engineering Fabric, Meeting State Standards.

**MINIMUM PAVEMENT  
CROSS - SECTIONS**

ISSUED: March 1988  
REVISED:

DWG. R-1-O

Scale For Microfilming

Inches

COPYRIGHT © 2007 BURNS & MCDONNELL ENGINEERING COMPANY, INC.



date 05-15-07	detailed D. CHAVEZ
designed J.LeROY	checked A.BRYANT



VILLAGE of NORTHFIELD	
2005 HAPP ROAD CMAQ MISCELLANEOUS DETAILS (4 OF 4)	
project 42272	contract
drawing <b>C008</b>	rev.
sheet 11	of 11 sheets
file 42272C008.dwg	