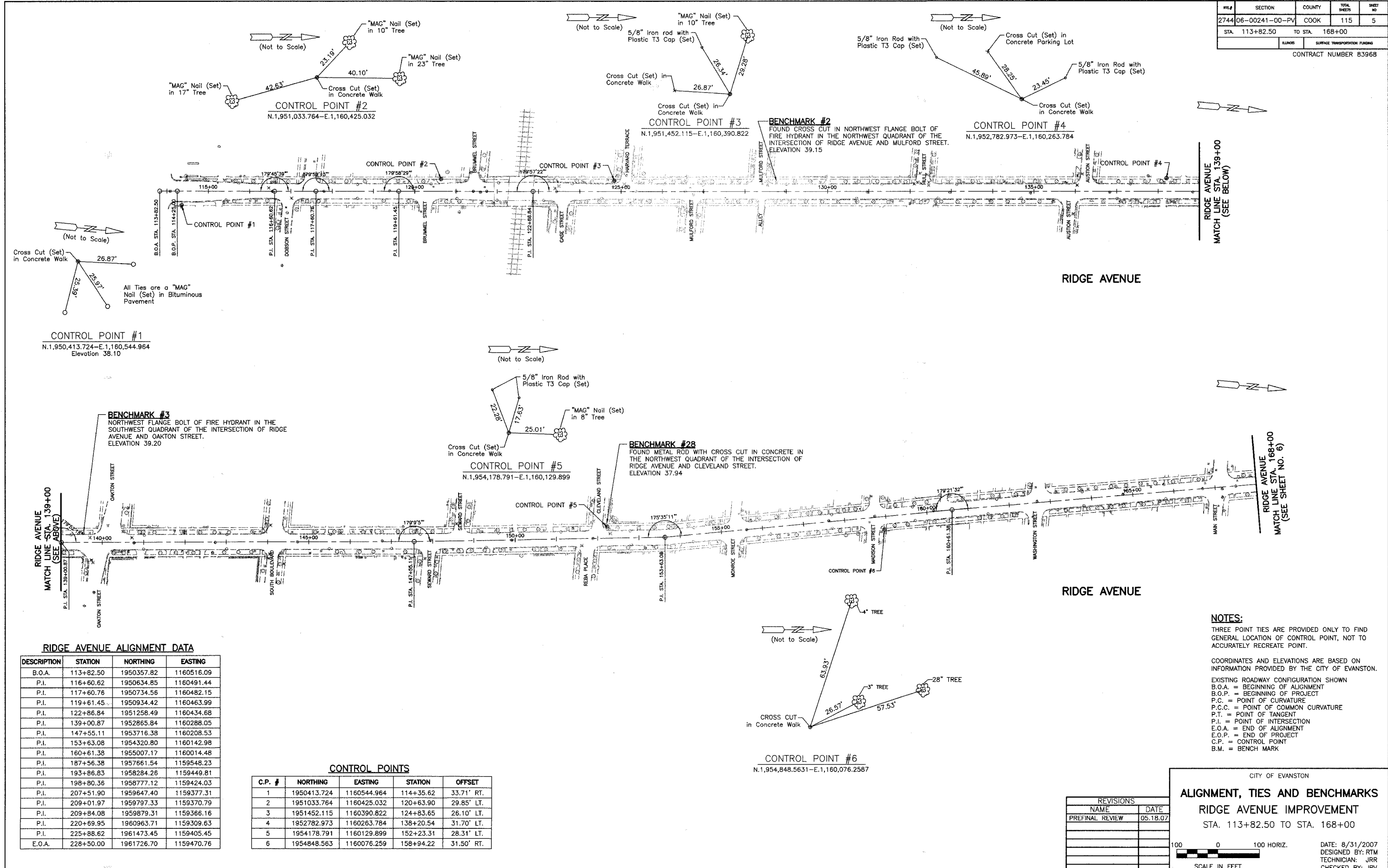


FILE #	SECTION	COUNTY	TOTAL SHEETS	SHEET NO
2744	06-00241-00-PV	COOK	115	5
STA. 113+82.50		TO STA. 168+00		
BLANKS		SURFACE TRANSPORTATION FUNDING		
CONTRACT NUMBER 83968				



**CONTROL POINT #1**  
 N.1,950,413.724-E.1,160,544.964  
 Elevation 38.10

**CONTROL POINT #2**  
 N.1,951,033.764-E.1,160,425.032

**CONTROL POINT #3**  
 N.1,951,452.115-E.1,160,390.822

**CONTROL POINT #4**  
 N.1,952,782.973-E.1,160,263.784

**CONTROL POINT #5**  
 N.1,954,178.791-E.1,160,129.899

**CONTROL POINT #6**  
 N.1,954,848.5631-E.1,160,076.2587

**BENCHMARK #3**  
 NORTHWEST FLANGE BOLT OF FIRE HYDRANT IN THE  
 SOUTHWEST QUADRANT OF THE INTERSECTION OF RIDGE  
 AVENUE AND OAKTON STREET.  
 ELEVATION 39.20

**BENCHMARK #28**  
 FOUND METAL ROD WITH CROSS CUT IN CONCRETE IN  
 THE NORTHWEST QUADRANT OF THE INTERSECTION OF  
 RIDGE AVENUE AND CLEVELAND STREET.  
 ELEVATION 37.94

**RIDGE AVENUE ALIGNMENT DATA**

DESCRIPTION	STATION	NORTHING	EASTING
B.O.A.	113+82.50	1950357.82	1160516.09
P.I.	116+60.62	1950634.85	1160491.44
P.I.	117+60.76	1950734.56	1160482.15
P.I.	119+61.45	1950934.42	1160463.99
P.I.	122+86.84	1951258.49	1160434.68
P.I.	139+00.87	1952865.84	1160288.05
P.I.	147+55.11	1953716.38	1160208.53
P.I.	153+63.08	1954320.80	1160142.98
P.I.	160+61.38	1955007.17	1160014.48
P.I.	187+56.38	1957661.54	1159548.23
P.I.	193+86.83	1958284.26	1159449.81
P.I.	198+80.36	1958777.12	1159424.03
P.I.	207+51.90	1959647.40	1159377.31
P.I.	209+01.97	1959797.33	1159370.79
P.I.	209+84.08	1959879.31	1159366.16
P.I.	220+69.95	1960963.71	1159309.63
P.I.	225+88.62	1961473.45	1159405.45
E.O.A.	228+50.00	1961726.70	1159470.76

**CONTROL POINTS**

C.P. #	NORTHING	EASTING	STATION	OFFSET
1	1950413.724	1160544.964	114+35.62	33.71' RT.
2	1951033.764	1160425.032	120+63.90	29.85' LT.
3	1951452.115	1160390.822	124+83.65	26.10' LT.
4	1952782.973	1160263.784	138+20.54	31.70' LT.
5	1954178.791	1160129.899	152+23.31	28.31' LT.
6	1954848.563	1160076.259	158+94.22	31.50' RT.

**NOTES:**  
 THREE POINT TIES ARE PROVIDED ONLY TO FIND  
 GENERAL LOCATION OF CONTROL POINT, NOT TO  
 ACCURATELY RECREATE POINT.  
 COORDINATES AND ELEVATIONS ARE BASED ON  
 INFORMATION PROVIDED BY THE CITY OF EVANSTON.  
 EXISTING ROADWAY CONFIGURATION SHOWN  
 B.O.A. = BEGINNING OF ALIGNMENT SHOWN  
 B.O.P. = BEGINNING OF PROJECT  
 P.C. = POINT OF CURVATURE  
 P.C.C. = POINT OF COMMON CURVATURE  
 P.T. = POINT OF TANGENT  
 P.I. = POINT OF INTERSECTION  
 E.O.A. = END OF ALIGNMENT  
 E.O.P. = END OF PROJECT  
 C.P. = CONTROL POINT  
 B.M. = BENCH MARK

REVISIONS	
NAME	DATE
PREFINAL REVIEW	05.18.07

CITY OF EVANSTON  
**ALIGNMENT, TIES AND BENCHMARKS**  
**RIDGE AVENUE IMPROVEMENT**  
 STA. 113+82.50 TO STA. 168+00

DATE: 8/31/2007  
 DESIGNED BY: RTM  
 TECHNICIAN: JRR  
 CHECKED BY: JRV