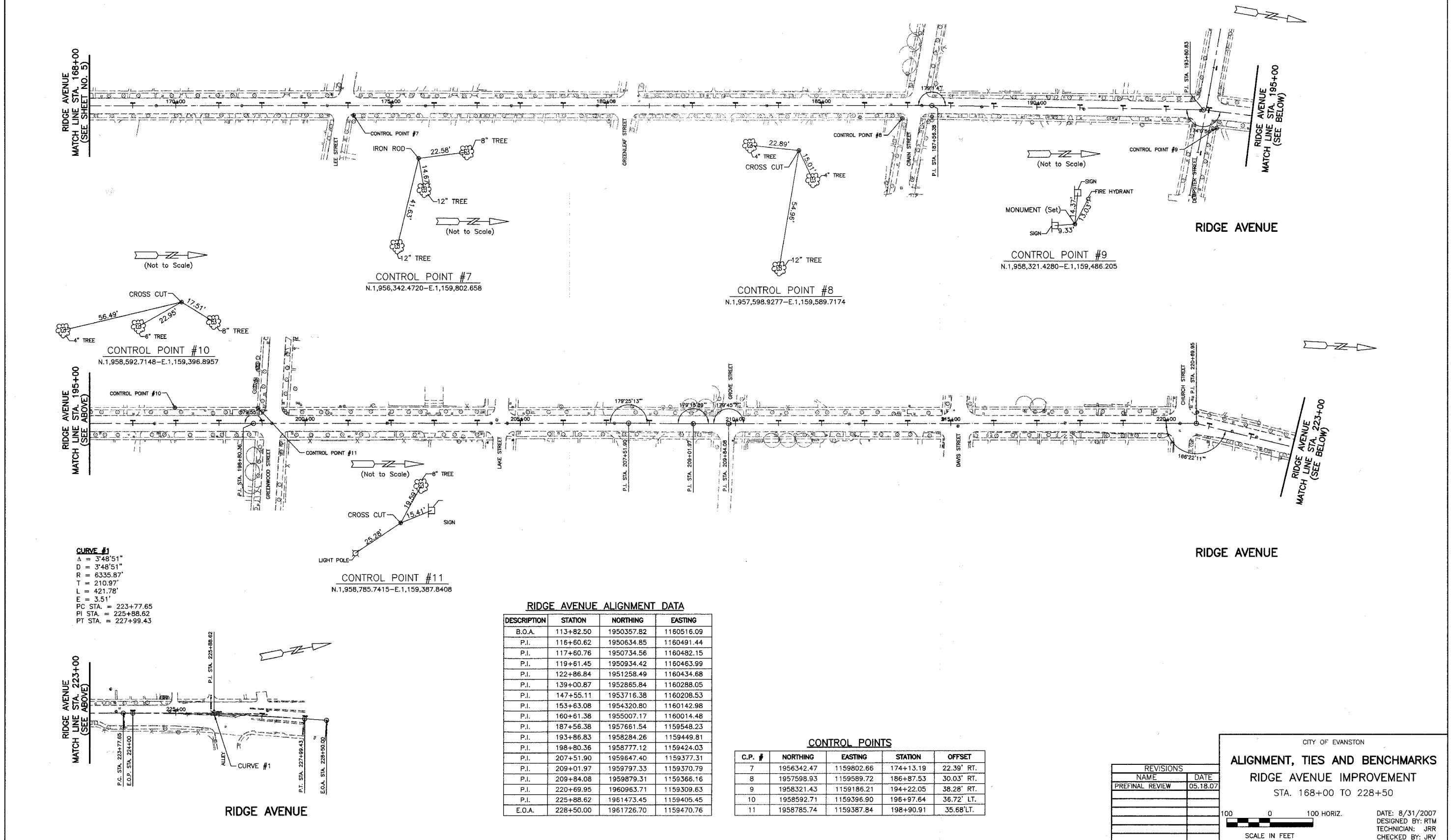


FILE #	SECTION	COUNTY	TOTAL SHEETS	SHEET NO.
2744	06-00241-00-PV	COOK	115	6
STA. 168+00	TO STA. 228+50			
ILLINOIS		SURFACE TRANSPORTATION FUNDING		

CONTRACT NUMBER 83968



RIDGE AVENUE  
MATCH LINE STA. 168+00  
(SEE SHEET NO. 5)

RIDGE AVENUE  
MATCH LINE STA. 195+00  
(SEE BELOW)

RIDGE AVENUE  
MATCH LINE STA. 195+00  
(SEE ABOVE)

RIDGE AVENUE  
MATCH LINE STA. 223+00  
(SEE BELOW)

**CURVE #1**  
 Δ = 3°48'51"  
 D = 3°48'51"  
 R = 6335.87'  
 T = 210.97'  
 L = 421.78'  
 P = 35.1'  
 PC STA. = 223+77.65  
 PI STA. = 225+88.62  
 PT STA. = 227+99.43

**RIDGE AVENUE ALIGNMENT DATA**

DESCRIPTION	STATION	NORTHING	EASTING
B.O.A.	113+82.50	1950357.82	1160516.09
P.I.	116+60.62	1950634.85	1160491.44
P.I.	117+60.76	1950734.56	1160482.15
P.I.	119+61.45	1950934.42	1160463.99
P.I.	122+86.84	1951258.49	1160434.68
P.I.	139+00.87	1952865.84	1160288.05
P.I.	147+55.11	1953716.38	1160208.53
P.I.	153+63.08	1954320.80	1160142.98
P.I.	160+61.38	1955007.17	1160014.48
P.I.	187+56.38	1957661.54	1159548.23
P.I.	193+86.83	1958284.26	1159449.81
P.I.	198+80.36	1958777.12	1159424.03
P.I.	207+51.90	1959647.40	1159377.31
P.I.	209+01.97	1959797.33	1159370.79
P.I.	209+84.08	1959879.31	1159366.16
P.I.	220+69.95	1960963.71	1159309.83
P.I.	225+88.62	1961473.45	1159405.45
E.O.A.	228+50.00	1961726.70	1159470.76

**CONTROL POINTS**

C.P. #	NORTHING	EASTING	STATION	OFFSET
7	1956342.47	1159802.66	174+13.19	22.39' RT.
8	1957598.93	1159589.72	186+87.53	30.03' RT.
9	1958321.43	1159186.21	194+22.05	38.28' RT.
10	1958592.71	1159396.90	196+97.64	36.72' LT.
11	1958785.74	1159387.84	198+90.91	35.68' LT.

REVISIONS	
NAME	DATE
PRELIMINARY REVIEW	05.18.07

CITY OF EVANSTON  
**ALIGNMENT, TIES AND BENCHMARKS**  
 RIDGE AVENUE IMPROVEMENT  
 STA. 168+00 TO 228+50

DATE: 8/31/2007  
 DESIGNED BY: RTM  
 TECHNICIAN: JRR  
 CHECKED BY: JRV