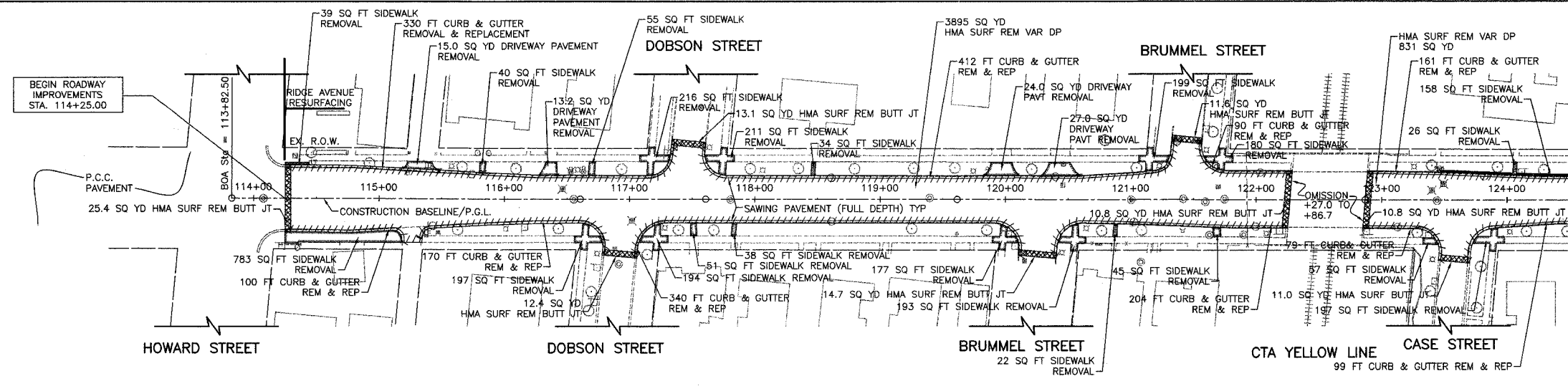


REF.	SECTION	COUNTY	TOTAL SHEETS	SHEET NO.
2744	06-00241-00-PV	COOK	115	7
STA. 113+82.50		TO STA. 125+00		
ILLINOIS		SURFACE TRANSPORTATION FUNDING		
CONTRACT NUMBER 83968				

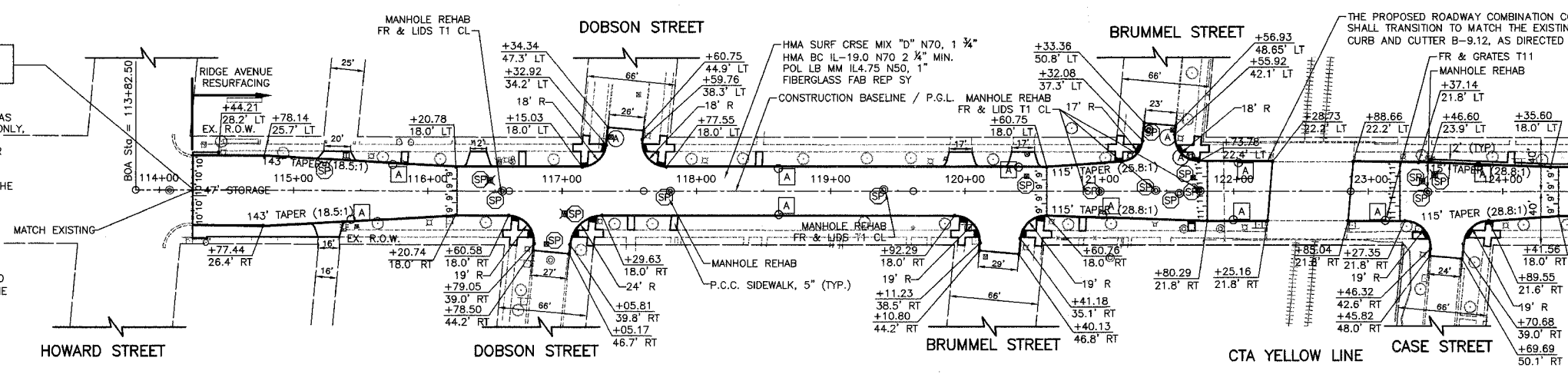


RIDGE AVENUE  
MATCH LINE STA. 124+50  
(SEE SHEET NO. 8)

EXISTING RIDGE AVENUE

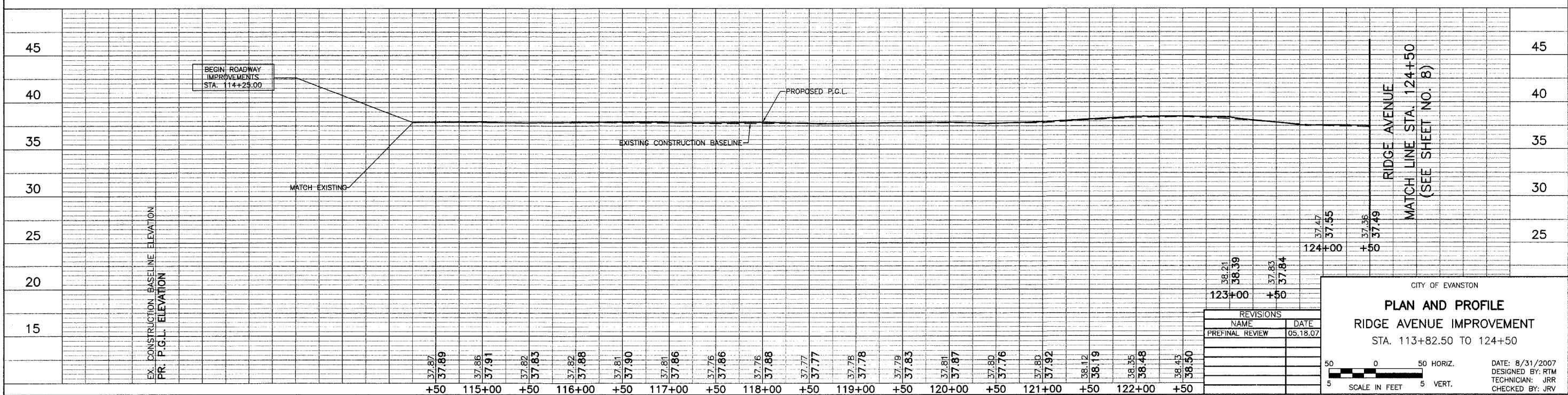
**PLAN AND PROFILE LEGEND (TYPICAL)**

- HOT MIX ASPHALT SURFACE REMOVAL BUTT JOINT REMOVAL
  - TREE REMOVAL AND SIZE
  - DETECTABLE WARNINGS
- NOTE:  
THE DIMENSION AND LOCATION OF EXISTING UNDERGROUND UTILITIES AS SHOWN ON THESE PLANS ARE AN ESTIMATE FOR DESIGN PURPOSES ONLY, AND ARE NOT INTENDED FOR USE AS FIELD LOCATIONS FOR CONSTRUCTION. CALL JULIE 48 HOURS PRIOR TO CONSTRUCTION FOR CONFIRMATION OF EXISTING UNDERGROUND UTILITY LOCATIONS.
- ALL DRIVEWAY RADII SHALL BE 5' UNLESS OTHERWISE NOTED. SEE THE IDOT BUREAU OF DESIGN STANDARD (BD-01).
- ALL PROPOSED SIDEWALK WIDTHS SHALL BE 5' UNLESS OTHERWISE NOTED.
- ALL DIMENSIONS ARE SHOWN F-F OF CURB.
- ALL CURB LINE STRUCTURES WILL RECEIVE NEW TYPE 11 FRAMES AND GRATES ACCORDING TO "SECTION 604 - FRAMES AND GRATES" OF THE CITY OF EVANSTON'S SPECIFICATIONS PAGE NO. COE 4.



RIDGE AVENUE  
MATCH LINE STA. 124+50  
(SEE SHEET NO. 8)

PROPOSED RIDGE AVENUE



REVISIONS	
NAME	DATE
PREFINAL REVIEW	05.18.07

CITY OF EVANSTON

**PLAN AND PROFILE**  
RIDGE AVENUE IMPROVEMENT  
STA. 113+82.50 TO 124+50

DATE: 8/31/2007  
DESIGNED BY: RTM  
TECHNICIAN: JRR  
CHECKED BY: JRV

