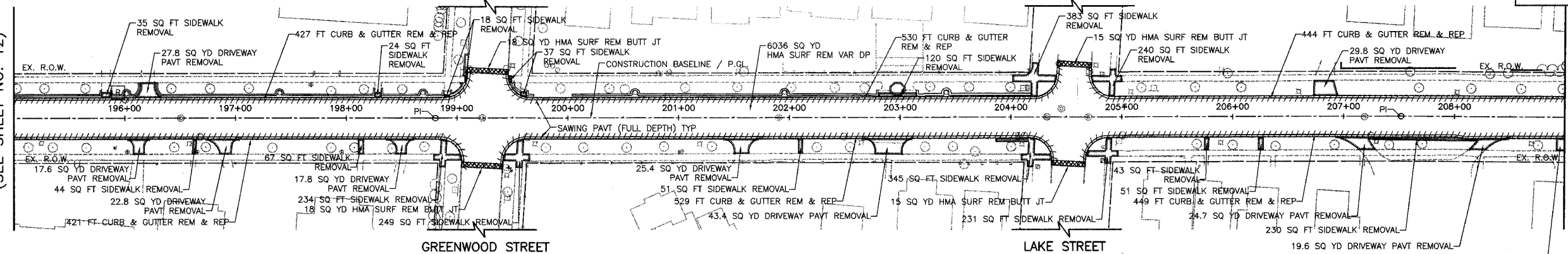


| FILE | SECTION | COUNTY | TOTAL SHEETS | SHEET NO |
|-------------|----------------|--------------------------------|--------------|----------|
| 2744 | 06-00241-00-PV | COOK | 115 | 13 |
| STA. 195+00 | | TO STA. 209+00 | | |
| ALIGNED | | SURFACE TRANSPORTATION FUNDING | | |

CONTRACT NUMBER 83968

RIDGE AVENUE
MATCH LINE STA. 195+00
(SEE SHEET NO. 12)



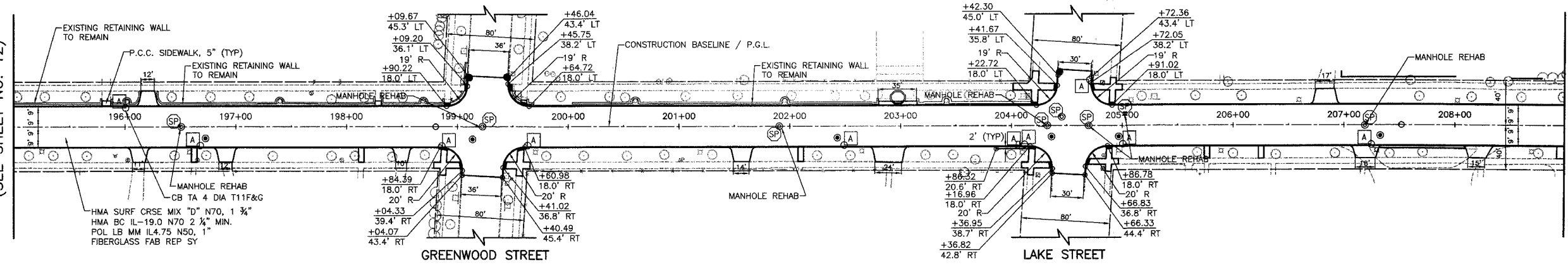
RIDGE AVENUE
MATCH LINE STA. 209+00
(SEE SHEET NO. 14)

GREENWOOD STREET

LAKE STREET

EXISTING RIDGE AVENUE

RIDGE AVENUE
MATCH LINE STA. 195+00
(SEE SHEET NO. 12)



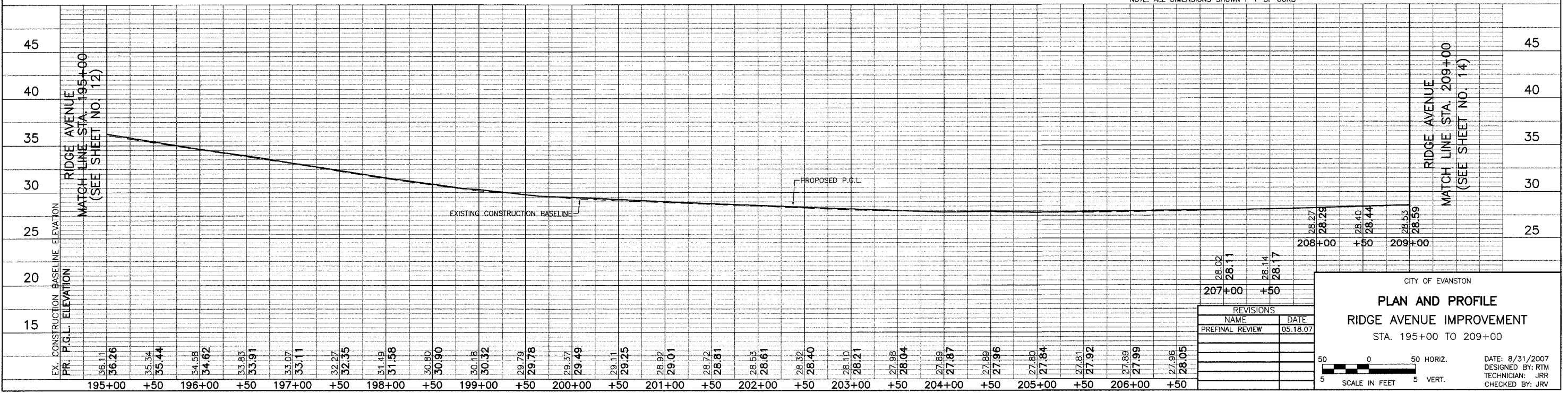
RIDGE AVENUE
MATCH LINE STA. 209+00
(SEE SHEET NO. 14)

GREENWOOD STREET

LAKE STREET

PROPOSED RIDGE AVENUE

NOTE: ALL DIMENSIONS SHOWN F-F OF CURB



| NO. | DATE | DESCRIPTION |
|-----|----------|--------------------|
| 1 | 05.18.07 | PRELIMINARY REVIEW |
| 2 | | |
| 3 | | |
| 4 | | |
| 5 | | |

CITY OF EVANSTON

PLAN AND PROFILE

RIDGE AVENUE IMPROVEMENT

STA. 195+00 TO 209+00

DATE: 8/31/2007
DESIGNED BY: RTM
TECHNICIAN: JRR
CHECKED BY: JRV

SCALE: 1" = 5' HORIZ. / 1" = 5' VERT.