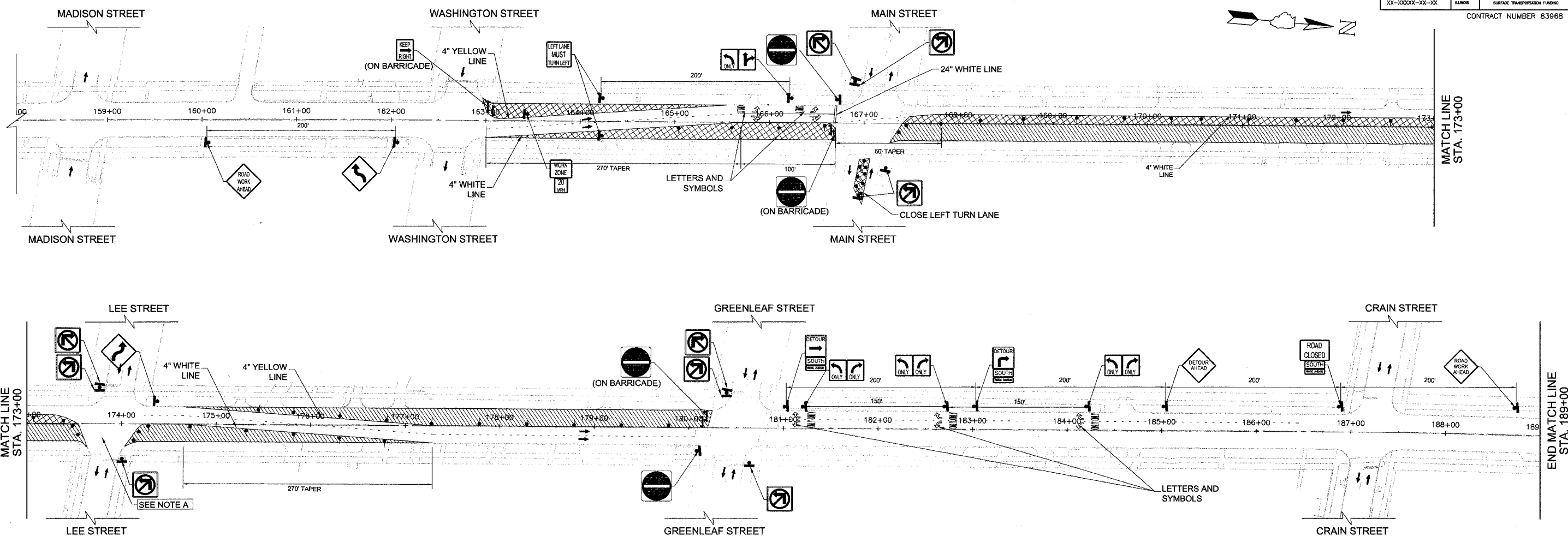


REF.	SECTION	COUNTY	TOTAL SHEETS	SHEET NO.
2744	06-00241-00-PV	COOK	115	16
STA. 160+00		TO STA. 189+00		
XX-XXXX-XX-XX		ILLINOIS	SURFACE TRANSPORTATION FUNDING	
CONTRACT NUMBER 83968				



**NOTES:**

- ACCESS TO ALL PROPERTIES SHALL BE MAINTAINED AT ALL TIMES DURING CONSTRUCTION EXCEPT FOR PERIODS OF SHORT DURATION WHEN APPROVED BY THE ENGINEER.
- ALL "ROAD WORK AHEAD" SIGNS SHALL BE EQUIPPED WITH MONO-DIRECTIONAL AMBER FLASHING LIGHTS.
- EXISTING TRAFFIC CONTROL DEVICES SHALL BE PROTECTED FROM DAMAGES. ANY DAMAGE CAUSED BY THE CONTRACTOR SHALL BE REPAIRED OR REPLACED BY THE CONTRACTOR AT HIS OWN EXPENSE TO SATISFACTION OF THE ENGINEER.
- PROVIDE "ONE WAY SIGN" AT ALL DRIVEWAY EXITS AND INTERSECTIONS TO RIDGE AVE. LOCATION OF SIGN WILL BE DECIDED AT THE FIELD BY THE ENGINEER.
- FOR MAINTENANCE OF TRAFFIC GENERAL NOTES, CONSTRUCTION SEQUENCE AND SECTION DETAILS SEE SHEET 24.
- SEE DETOUR DRAWINGS FOR OTHER TEMPORARY SIGNS AND GENERAL NOTES.
- FOR CONSTRUCTION SEQUENCE AND SECTION DETAILS SEE SHEET 24.
- FOR ROAD SIGN DETAILS SEE DRAWING "ROAD SIGNS & DETOUR NOTES", SHEET 25.
- ALL PROPOSED PAVEMENT MARKING ON THIS SHEET SHALL BE "TEMPORARY PAVEMENT MARKINGS" IN ACCORDANCE WITH ARTICLE 703.05 OF THE "IDOT STANDARD SPECIFICATIONS" ADOPTED JAN 1 2007.

**PLAN LEGEND**

- CONSTRUCTION AREA
- LANE CLOSED EXCEPT CONSTRUCTION TRAFFIC
- ARROW BOARD
- TYPE III BARRICADE
- TRAFFIC SIGN
- T.A. TEMPORARY ACCESS
- P.E. PRIVATE ENTRANCE
- C.E. COMMERCIAL ENTRANCE

**NOTE "A":** CONSTRUCT INTERSECTION IN TWO STAGES UNDER TRAFFIC, USING FLAGGERS. MAINTAIN TRAFFIC DURING NON-WORKING HOURS.

REVISIONS	

CITY OF EVANSTON  
**RIDGE AVENUE IMPROVEMENT  
 STAGING & MAINTENANCE OF TRAFFIC  
 PRE-STAGE DETOUR**  
 STA. 160+00 TO 189+00

SCALE IN FEET

DATE: 8/31/2007  
 DESIGNED BY: RAM  
 TECHNICIAN: RR  
 CHECKED BY: WCM