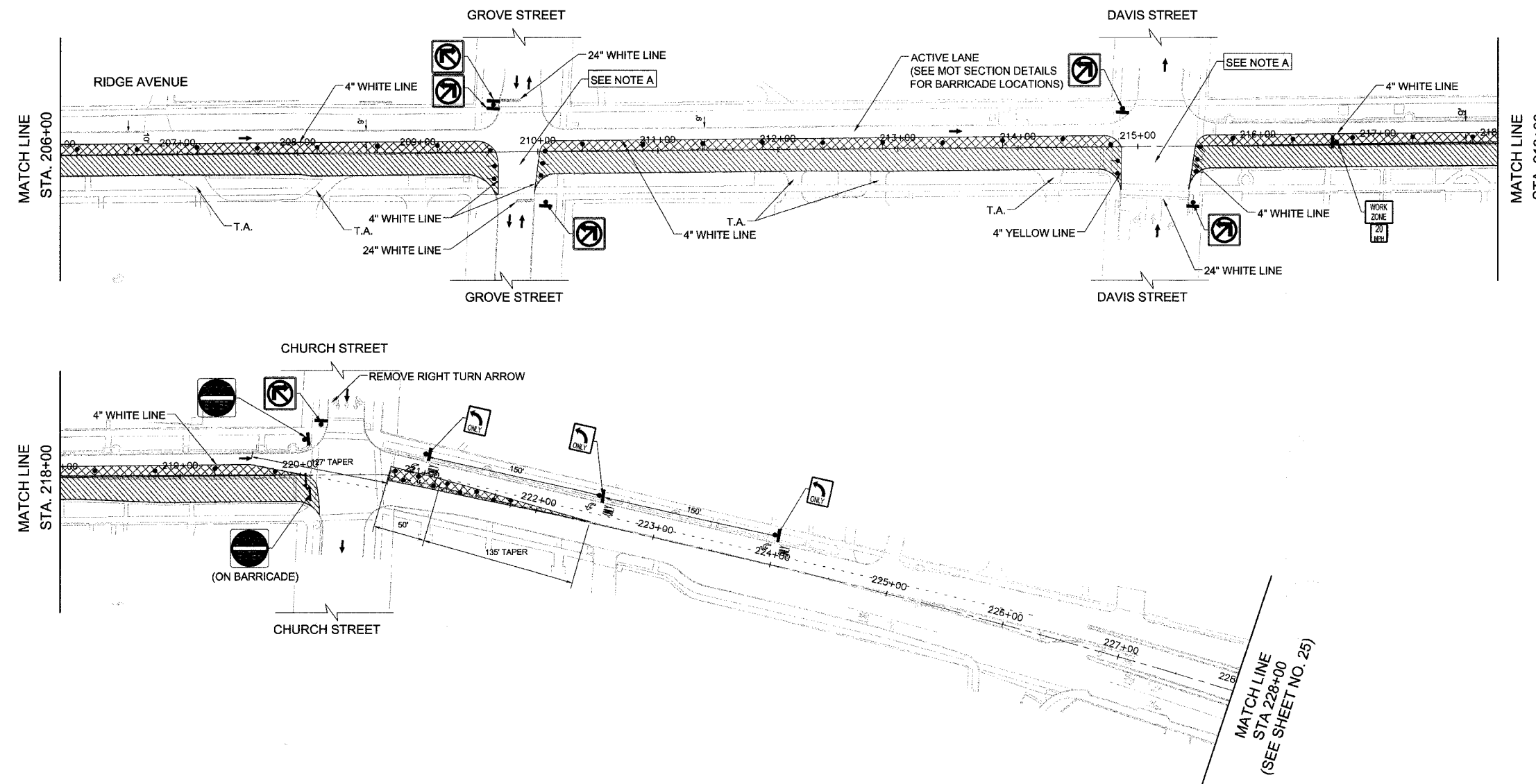


REL#	SECTION	COUNTY	TOTAL SHEETS	SHEET NO
2744	06-00241-00-PV	COOK	115	22
STA. 207+00		TO STA. 228+00		
XX-XXXXX-XX-XX	ILLINOIS	SURFACE TRANSPORTATION FUNDING		
CONTRACT NUMBER 83968				



NOTES:

- ACCESS TO ALL PROPERTIES SHALL BE MAINTAINED AT ALL TIMES DURING CONSTRUCTION EXCEPT FOR PERIODS OF SHORT DURATION WHEN APPROVED BY THE ENGINEER.
- ALL "ROAD WORK AHEAD" SIGNS SHALL BE EQUIPPED WITH MONO-DIRECTIONAL AMBER FLASHING LIGHTS.
- EXISTING TRAFFIC CONTROL DEVICES SHALL BE PROTECTED FROM DAMAGES. ANY DAMAGE CAUSED BY THE CONTRACTOR SHALL BE REPAIRED OR REPLACED BY THE CONTRACTOR AT HIS OWN EXPENSE TO SATISFACTION OF THE ENGINEER.
- PROVIDE "ONE WAY SIGN" AT ALL DRIVEWAY EXITS AND INTERSECTIONS TO RIDGE AVE. LOCATION OF SIGN WILL BE DECIDED AT THE FIELD BY THE ENGINEER.
- FOR MAINTENANCE OF TRAFFIC GENERAL NOTES, CONSTRUCTION SEQUENCE AND SECTION DETAILS SEE SHEET 24.
- SEE DETOUR DRAWINGS FOR OTHER TEMPORARY SIGNS AND GENERAL NOTES.
- FOR CONSTRUCTION SEQUENCE AND SECTION DETAILS SEE SHEET 24.
- FOR ROAD SIGN DETAILS SEE DRAWING "ROAD SIGNS & DETOUR NOTES", SHEET 25.
- ALL PROPOSED PAVEMENT MARKING ON THIS SHEET SHALL BE "TEMPORARY PAVEMENT MARKINGS" IN ACCORDANCE WITH ARTICLE 703.05 OF THE "IDOT STANDARD SPECIFICATIONS" ADOPTED JAN 1 2007.
- TWO TYPE III BARRICADES WILL BE USED IN ALL LOCATIONS WHERE TYPE III BARRICADES ARE UTILIZED.

PLAN LEGEND

- CONSTRUCTION AREA
- LANE CLOSED EXCEPT CONSTRUCTION TRAFFIC
- TYPE II TYPE II BARRICADE OR DRUMS WITH MON-DIRECTIONAL STEADY-BURN LIGHTS @ 50' CTRS. (25' SPACING AT TAPERS & 10' AT RADII).

- ARROW BOARD
- TYPE III BARRICADE
- TRAFFIC SIGN
- TEMPORARY ACCESS
- P.E.
- C.E.

NOTE "A": CONSTRUCT INTERSECTION IN TWO STAGES UNDER TRAFFIC, USING FLAGGERS. MAINTAIN TRAFFIC DURING NON-WORKING HOURS.

REVISIONS	
NO.	DESCRIPTION

CITY OF EVANSTON

**RIDGE AVENUE IMPROVEMENT
STAGING & MAINTENANCE OF TRAFFIC
STAGE-2 PHASE-1
STA. 207+00 TO 228+00**

SCALE IN FEET

DATE: 8/31/2007
DESIGNED BY: RAM
TECHNICIAN: RR
CHECKED BY: WCM