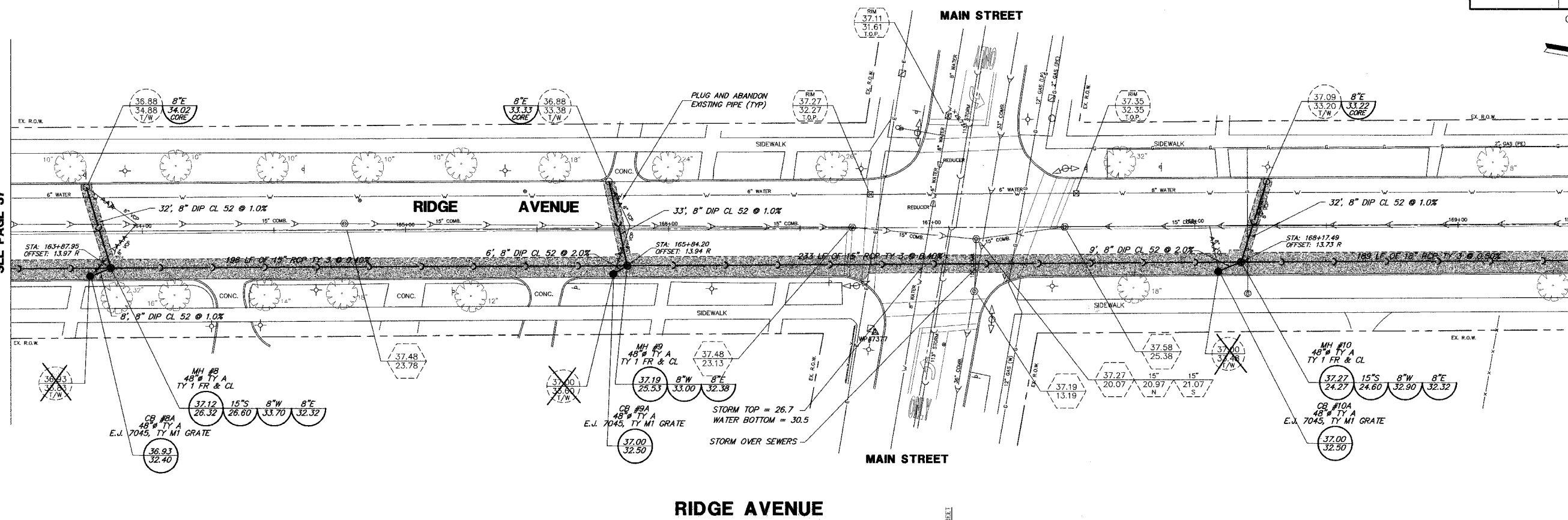


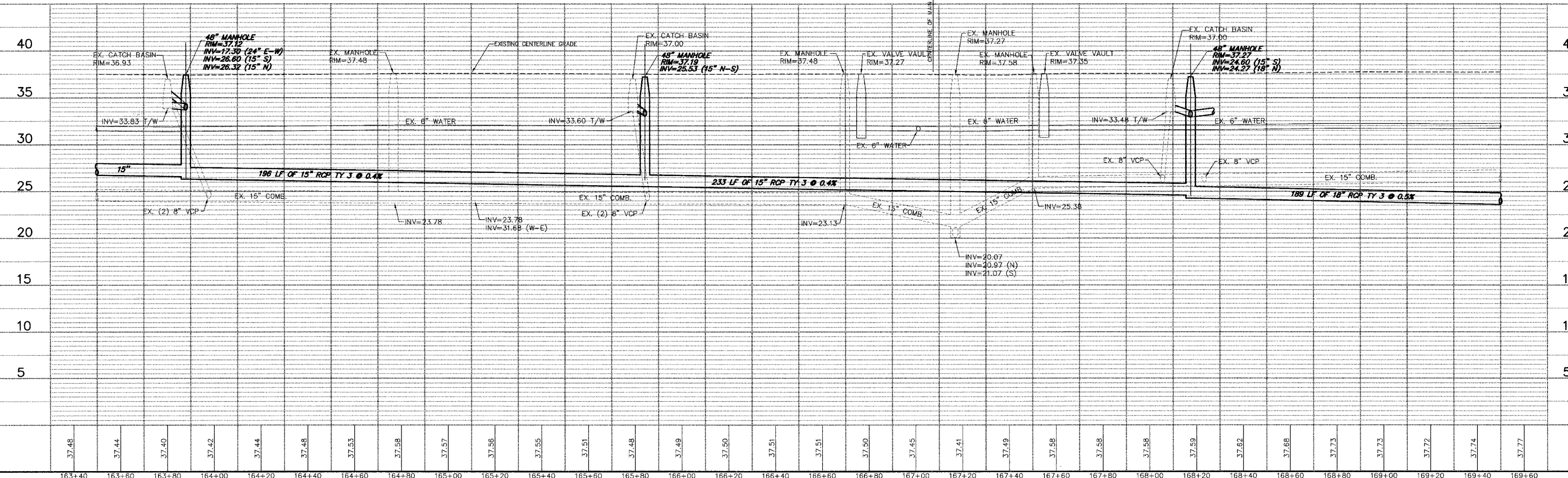
MATCH LINE STA. 163+50  
SEE PAGE 37

MATCH LINE STA. 169+50  
SEE PAGE 39

SCALE:  
H: 1"=20'  
V: 1"=5'



**RIDGE AVENUE**



**PLAN & PROFILE**

**RIDGE AVENUE  
RELIEF SEWER IMPROVEMENTS  
EVANSTON, ILLINOIS**

**GEWALT HAMILTON  
ASSOCIATES, INC.**  
CONSULTING ENGINEERS & SURVEYORS  
850 Forest Edge Drive Vernon Hills, IL 60061 Tel. 847.478.9700 Fax 847.478.9701

COPYRIGHT NOTICE  
This drawing is the property of Gewalt-Hamilton Assoc., Inc. and is not to be used for any purpose other than the specific project and site named herein, and cannot be reproduced in any manner without the express written permission from Gewalt-Hamilton Associates, Inc.

NO.	BY	DATE	REVISION
3	SD8	8-28-07	PER IDOT COMMENTS
2	KD	7-27-07	PER IDOT COMMENTS ON 7/24/07
1	DSM	5-18-07	FIRST SUBMITTAL

FILE	SHEET NUMBER
DRAWN BY: GW3	GHA PROJECT # 3566.100
DATE	<b>38</b>
CHECKED BY: SDB	SCALE: H: 1"=20' V: 1"=5'
DATE	OF 115 SHEETS

RIDGE AVE. RELIEF SEWER PLAN & PROFILE - 3566.100