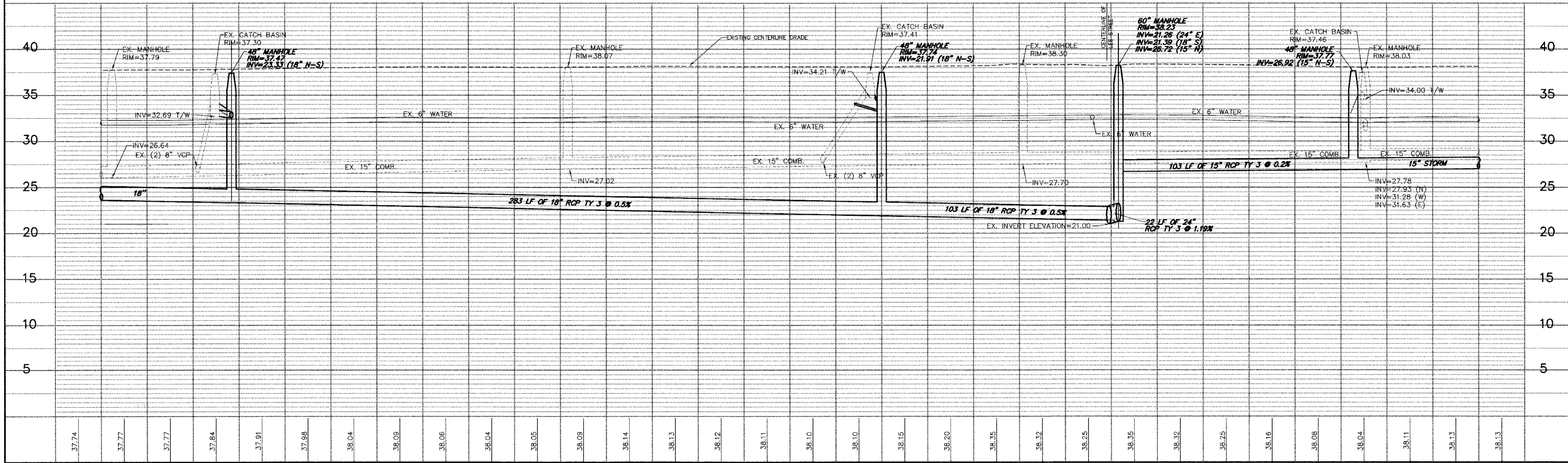
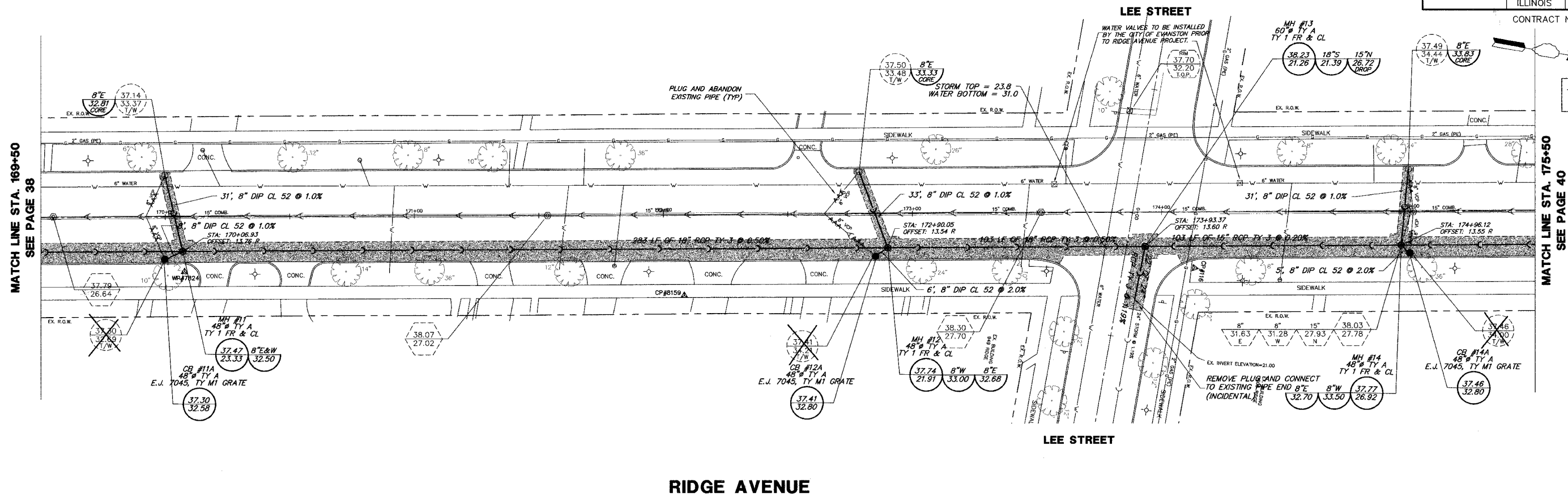


|   |                |        |              |           |
|---|----------------|--------|--------------|-----------|
| F.A.P. R.T.E.                           | SECTION        | COUNTY | TOTAL SHEETS | SHEET NO. |
|   | 06-00241-00-PV | COOK   | 115          | 39        |
| DRAINAGE & UTILITY STA 169+50 TO 175+50 |                |        |              |           |
| ILLINOIS                                |                |        |              |           |
| CONTRACT NUMBER 83968                   |                |        |              |           |



**GEWALT HAMILTON ASSOCIATES, INC.**  
 CONSULTING ENGINEERS & SURVEYORS  
 850 Forest Edge Drive  
 Vernon Hills, IL 60061 Tel. 847.478.9700 Fax 847.478.9701

**COPYRIGHT NOTICE**  
 This drawing is the property of Gewalt-Hamilton Assoc., Inc. and is not to be used for any purpose other than the specific project and site named herein, and cannot be reproduced in any manner without the express written permission from Gewalt-Hamilton Associates, Inc.

**PLAN & PROFILE**  
**RIDGE AVENUE**  
**RELIEF SEWER IMPROVEMENTS**  
**EVANSTON, ILLINOIS**

| NO. | BY  | DATE    | REVISION                     |
|-----|-----|---------|------------------------------|
| 3   | SDB | 8-28-07 | PER IDOT COMMENTS            |
| 2   | KD  | 7-27-07 | PER IDOT COMMENTS ON 7/24/07 |
| 1   | DSM | 5-18-07 | FIRST SUBMITTAL              |

|                 |               |               |               |
|-----------------|---------------|---------------|---------------|
| FILE:           | DRAWN BY: GW3 | GHA PROJECT # | SHEET NUMBER: |
|                 | DATE:         | 3566.100      | <b>39</b>     |
| CHECKED BY: SDB | SCALE:        |               | Of 115 SHEETS |
| DATE:           | H: 1"=20'     |               |               |
|                 | V: 1"=5'      |               |               |