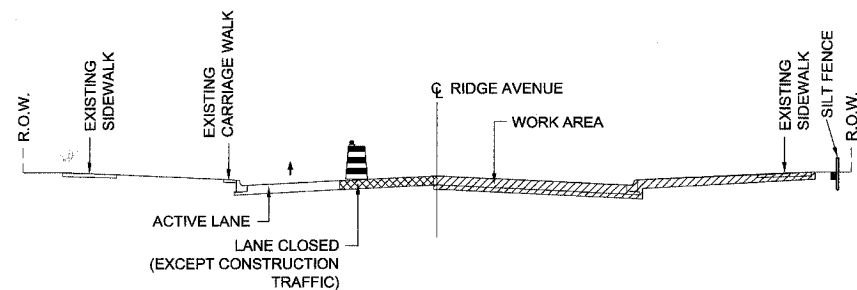
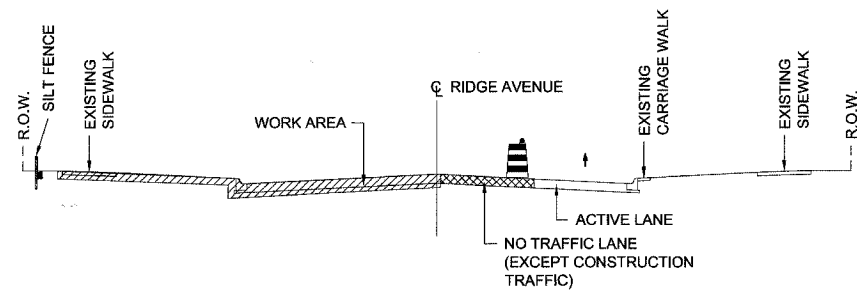


PROJECT #	SECTION	COUNTY	TOTAL SHEETS	SHEET NO.
2744	06-00241-00-PV	COOK	115	55
STA.	TO STA.			
XX-XXXX-XX-XX	SLINGS	SURFACE TRANSPORTATION FUNDING		
CONTRACT NUMBER 83968				



STAGE I OR II - PHASE 1
RIDGE AVENUE LOOKING NORTH



STAGE I OR II - PHASE 2
RIDGE AVENUE LOOKING NORTH

STAGE I OR II PHASE 1:

1. BEGIN CLEARING OPTIONS: INSTALL PERIMETER SILT FENCE AND TREE PROTECTION FENCE PRIOR THE COMMENCEMENT OF THE EARTHWORK AS SHOWN ON THE STAGE I PLANS.
2. INSTALL INLET PROTECTION ON ALL DRAINAGE STRUCTURES WITH IN THE WORK AREA.
3. STRIP AND EXCAVATE PAVEMENT AND SIDEWALK.
4. DISTURBED SOIL SHALL BE STOCKPILED FOR REUSE.
5. DISTURBED SOIL THAT IS UNUSABLE SHALL BE HAULED AWAY FROM THE SITE AS DIRECTED BY THE ENGINEER.
6. DISTURBED AREAS BETWEEN SIDEWALK AND FACE OF CURB, SHALL BE STABILIZED SAME DAY USING STRAW MULCH.
7. INSTALL OR MODIFY DRAINAGE STRUCTURES AS NECESSARY.
8. DUST CONTROL WATERING SHALL BE APPLIED AS DIRECTED BY THE ENGINEER.
9. PERMANENT EROSION CONTROL SHALL BE DONE AS SOON AS THE CONSTRUCTION WORK IS COMPLETED AT THAT AREA.
10. PERMANENT EROSION CONTROL MEASURES THAT HAS BEEN COMPLETED SHALL BE MAINTAINED TILL THE END OF PROJECT.
11. IF PERMANENT SEEDING CANNOT BE PLACED DUE TO CONTRACT REQUIREMENTS REGARDING PLANTING SEASONS, THE CUT SLOPE SHALL HAVE TOPSOIL PLACED AND SEEDING PREPARED PRIOR TO USING TEMPORARY STABILIZATION WITH STRAW MULCH OR TEMPORARY SEEDING WITH EROSION BLANKET.
12. ONCE THE EXCAVATION WITHIN A SPECIFIC AREA HAS BEGUN, THE OPERATION SHALL BE CONTINUOUS FROM STRIPPING THROUGH THE COMPLETION OF THE GRADING AND PLACEMENT OF SLOPE STABILIZATION MEASURES. ANY INTERRUPTIONS IN THE OPERATION OF 14 DAYS OR MORE SHALL BE APPROVED BY THE ENGINEER. ANY VIOLATION OF THE REQUIREMENT WILL RESULT IN THE CONTRACTOR ASSUMING THE RESPONSIBILITY IF PLACING STABILIZATION AT HIS OWN COST AND EXPENSE.

STAGE I OR II PHASE 2:

1. REPEAT ALL EROSION CONTROL MEASURES TAKEN FOR PHASE 1.

REVISIONS	

CITY OF EVANSTON
**LANDSCAPE RESTORATION
AND EROSION CONTROL SECTIONS**
RIDGE AVENUE IMPROVEMENT

DATE: 8/31/2007
DESIGNED BY: RAM
TECHNICIAN: RR
CHECKED BY: WCM