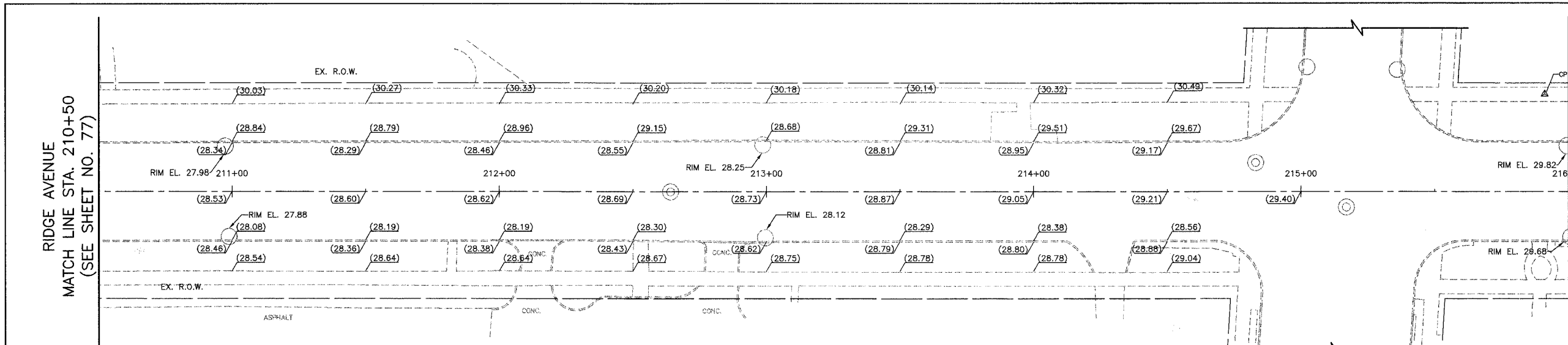
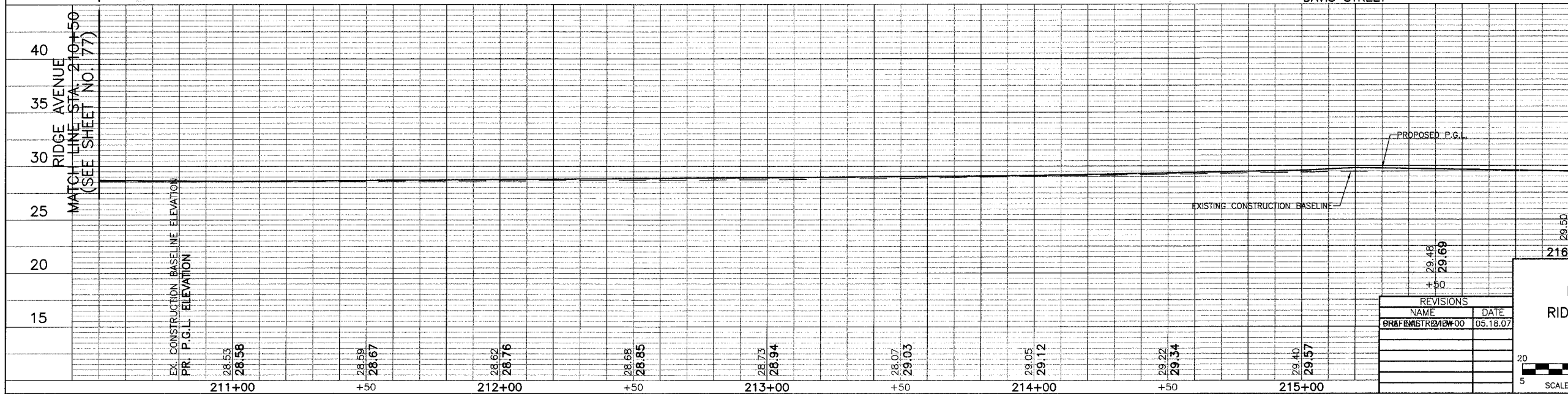
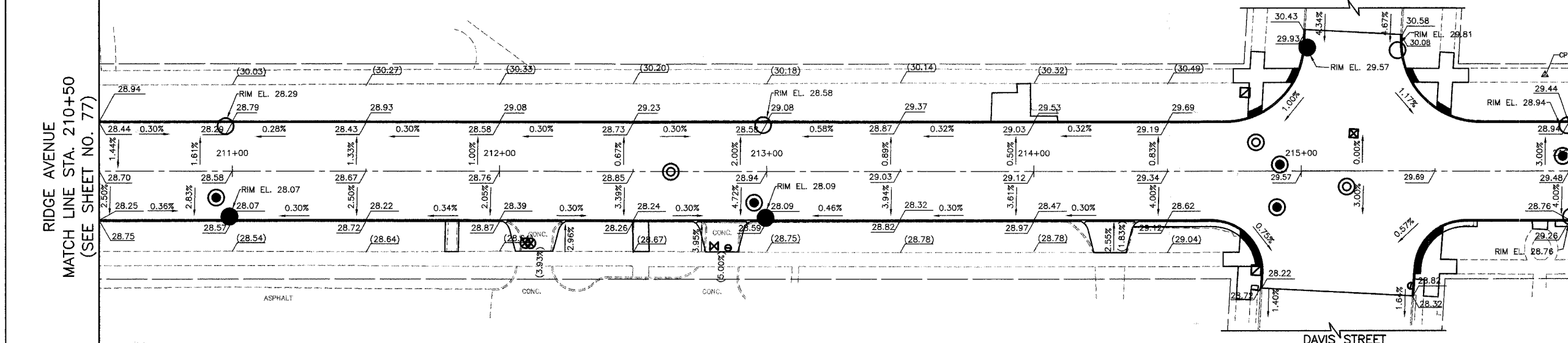


PROJECT	SECTION	COUNTY	TOTAL SHEETS	SHEET NO.
2744 06-00241-00-PV		COOK	115	78
STA. 210+50	TO STA. 216+00			
	ILLINOIS	SURFACE TRANSPORTATION FUNDING		
		CONTRACT NUMBER 8396B		



LEGEND
 (XX.XX) EXISTING ELEVATION
XX.XX PROPOSED ELEVATION



RIDGE AVENUE
 MATCH LINE STA. 216+00
 (SEE SHEET NO. 79)

EXISTING RIDGE AVENUE

RIDGE AVENUE
 MATCH LINE STA. 216+00
 (SEE SHEET NO. 79)

PROPOSED RIDGE AVENUE

RIDGE AVENUE
 MATCH LINE STA. 216+00
 (SEE SHEET NO. 79)

REVISIONS	
NAME	DATE
GRAFFENSTR210P-00	05.18.07

CITY OF EVANSTON

ROADWAY GRADING PLAN
RIDGE AVENUE IMPROVEMENTS
 STA. 210+50 to 216+00

DATE: 8/31/2007
 DESIGNED BY: RTM
 TECHNICIAN: JRR
 CHECKED BY: JRV

20 0 20 HORIZ.
 5 SCALE IN FEET 5 VERT.