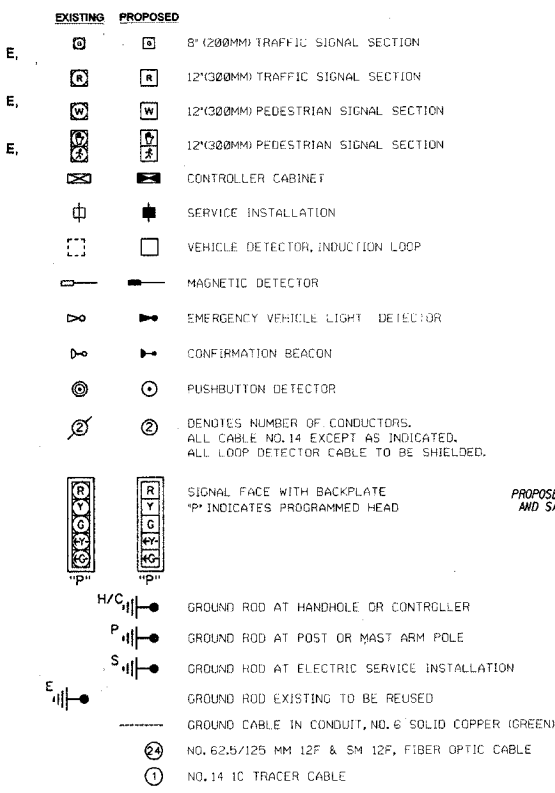


SCHEDULE OF QUANTITIES

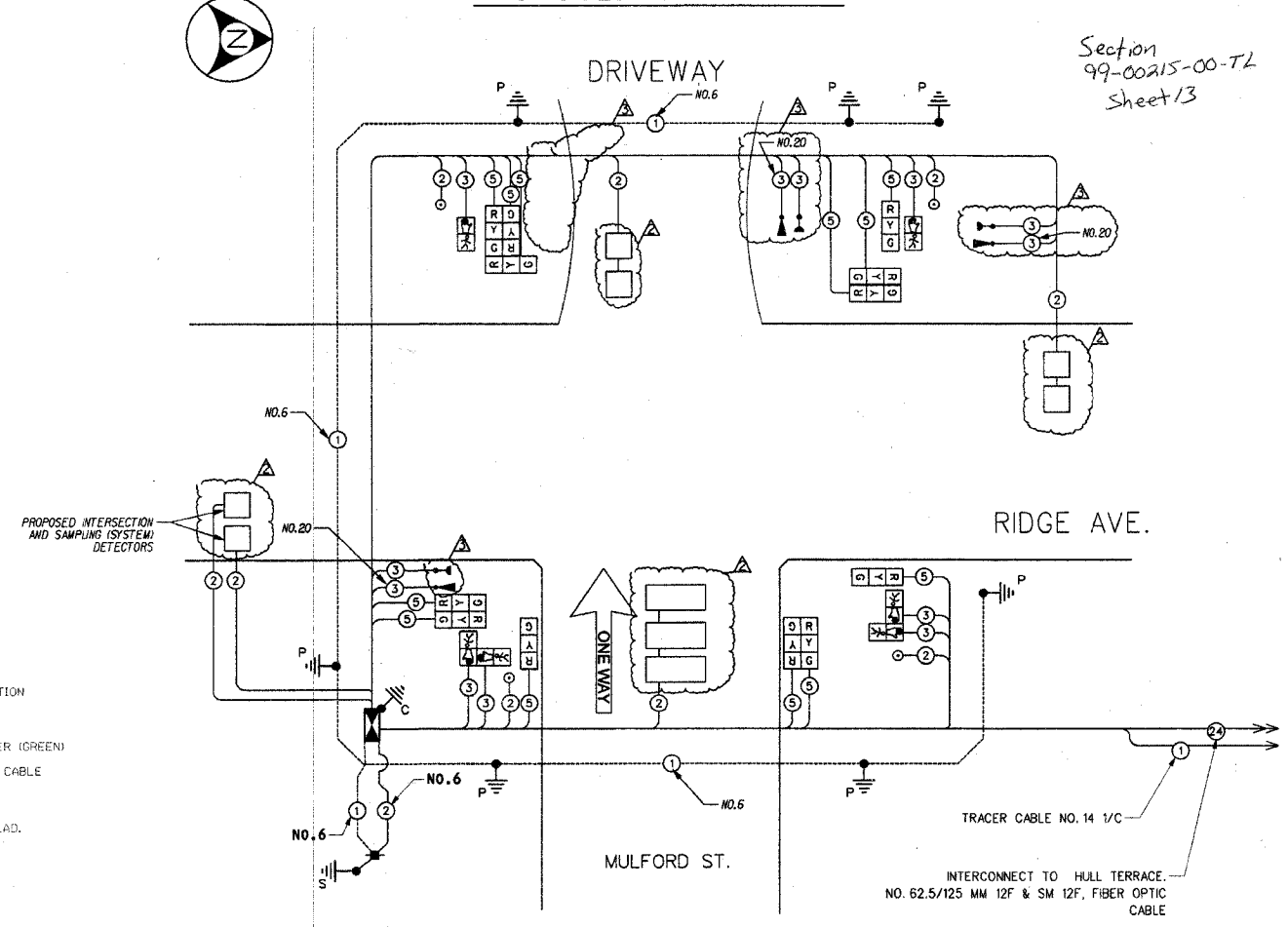
QTY	UNIT	ITEM DESCRIPTION
86	SQ FT	PORTLAND CEMENT CONCRETE SIDEWALK 5"
220	FOOT	THERMOPLASTIC PAVEMENT MARKING-LINE 6"
58	FOOT	THERMOPLASTIC PAVEMENT MARKING-LINE 24"
80	SQ FT	THERMOPLASTIC PAVEMENT MARKING REMOVAL
1	EACH	SERVICE INSTALLATION, POLE MOUNTED
10	FOOT	CONDUIT IN TRENCH, 3" DIA., GALVANIZED STEEL
10	FOOT	CONDUIT IN TRENCH, 5" DIA., GALVANIZED STEEL
548	FOOT	CONDUIT PUSHED, 2" DIA., GALVANIZED STEEL
63	FOOT	CONDUIT PUSHED, 2 1/2" DIA., GALVANIZED STEEL
19	FOOT	CONDUIT PUSHED, 3" DIA., GALVANIZED STEEL
157	FOOT	CONDUIT PUSHED, 4" DIA., GALVANIZED STEEL
5	EACH	HANDHOLE
1	EACH	DOUBLE HANDHOLE
20	FOOT	TRENCH AND BACKFILL FOR ELECTRICAL WORK
1	EACH	FULL-ACTUATED CONTROLLER AND TYPE IV CABINET, SPECIAL
1	EACH	TRANSCEIVER - FIBER OPTIC
580	FOOT	ELECTRIC CABLE IN CONDUIT, GROUNDING, NO. 6 1C
417	FOOT	ELECTRIC CABLE IN CONDUIT, SIGNAL NO. 14 2C
1044	FOOT	ELECTRIC CABLE IN CONDUIT, SIGNAL NO. 14 3C
1425	FOOT	ELECTRIC CABLE IN CONDUIT, SIGNAL NO. 14 5C
1087	FOOT	ELECTRIC CABLE IN CONDUIT, LEAD-IN, NO. 14 1 PAIR
484	FOOT	ELECTRIC CABLE IN CONDUIT, NO. 20 3/C, TWISTED, SHIELDED
290	FOOT	ELECTRIC CABLE IN CONDUIT, SERVICE, NO. 6 2C
4	EACH	TRAFFIC SIGNAL POST, GALVANIZED STEEL 14 FT.
3	EACH	TRAFFIC SIGNAL POST, GALVANIZED STEEL 18 FT.
28	FOOT	CONCRETE FOUNDATION, TYPE A
4	FOOT	CONCRETE FOUNDATION, TYPE D
3	EACH	SIGNAL HEAD, LED, 1-FACE, 3-SECTION, BRACKET MOUNTED
2	EACH	PEDESTRIAN SIGNAL HEAD, LED, 1-FACE, BRACKET MOUNTED
5	EACH	INDUCTIVE LOOP DETECTOR
946	FOOT	DETECTOR LOOP, TYPE 1
2	EACH	LIGHT DETECTOR
1	EACH	LIGHT DETECTOR AMPLIFIER
4	EACH	PEDESTRIAN PUSH-BUTTON
1	EACH	TEMPORARY TRAFFIC SIGNAL INSTALLATION
1	EACH	REMOVE EXISTING TRAFFIC SIGNAL EQUIPMENT
4	EACH	REMOVE EXISTING HANDHOLE
5	EACH	REMOVE EXISTING CONCRETE FOUNDATION
3	EACH	SIGNAL HEAD, LED, 2-FACE, 3-SECTION, BRACKET MOUNTED
1	EACH	SIGNAL HEAD, LED, 3-FACE, 3-SECTION, BRACKET MOUNTED
2	EACH	PEDESTRIAN SIGNAL HEAD, LED, 2-FACE, BRACKET MOUNTED
1	EACH	REMOVE EXISTING SERVICE INSTALLATION

CABLE PLAN LEGEND



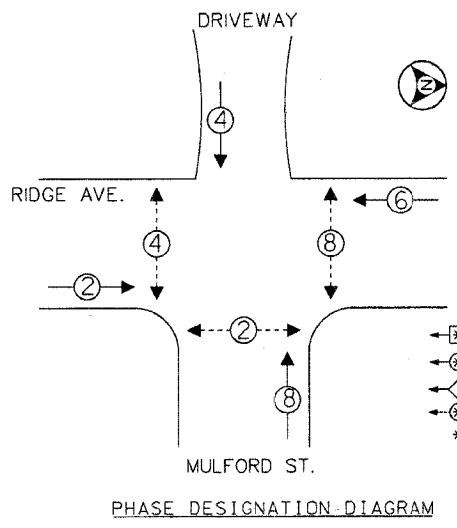
NOTE: ALL NEW GROUND RODS SHALL BE 3/4" X 10'-0" LONG COPPER CLAD. THE COST SHALL BE INCIDENTAL TO THE COST OF INSTALLATION.

PROPOSED CABLE PLAN



Section 99-00215-00-T2
Sheet 13

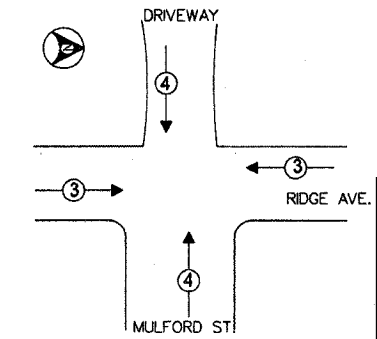
PROPOSED CONTROLLER SEQUENCE



PHASE DESIGNATION DIAGRAM

NOTE:
 • PUSH BUTTON "A" SHALL PLACE A CALL IN PHASES 2 AND 4
 • PUSH BUTTON "D" SHALL PLACE A CALL IN PHASES 2 AND 8

PROPOSED EMERGENCY VEHICLE PREEMPTION SEQUENCE



PROPOSED EMERGENCY VEHICLE PREEMPTORS		
EMERGENCY VEHICLE PREEMPTOR	3	4
MOVEMENT	←→	↑↓

I.D.O.T. TRAFFIC SIGNAL INSTALLATION ELECTRICAL SERVICE REQUIREMENTS					TOTAL WATTAGE
TYPE	NO. OF LAMPS	INCAND	LED	XX OPERATIONS	
SIGNAL (RED)	12	135	17	0.50	102
(YELLOW)	12	135	25	0.25	75
(GREEN)	12	135	15	0.25	45
ARROW	135	12	0.10		
PED. SIGNAL	6	90	25	1.00	150
CONTROLLER	1	100	100	1.00	100
ILLUM. SIGN		84		0.05	
FLASHER				0.50	
ENERGY COSTS TO:				TOTAL =	472

THE TRAFFIC SIGNAL CONTROL EQUIPMENT FOR THIS PROJECT SHALL BE "EAGLE" TO MATCH THE EXISTING ADJACENT SYSTEM.

FOUNDATION (DEPTH)	(FT.)	CABLE SLACK	(FT.)	VERTICAL	(FT.)
TYPE A - POST	4	HANDHOLE	6.5	ALL FOUNDATIONS	3.5
D - CONTROLLER	4	DOUBLE HANDHOLE	13	MAST ARM (L) POLE	20'+L-2 =
E - M ARM POLE		SIGNAL POST	2	BRACKET MOUNTED	13
24"	10	CONTROLLER CAB.	1	PED. PUSHBUTTON	4
30"	15	FIBER OPTIC	13	ELECTRIC SERVICE	13.5
		ELECTRIC SERVICE	1	SERVICE TO GROUND	13.5
		GROUND CABLE	1	POST MOUNTED	6

REVISIONS		
NO.	DATE	DESCRIPTION
△	06-08-06	MISCELLANEOUS REVISION
△	11-15-06	DETECTOR LOOPS AND SYSTEM DETECTOR LOOPS TO BE INSTALLED BY OTHERS AT A LATER DATE
△	11-15-06	EVP REVISIONS

CABLE PLAN, PHASE DESIGNATION DIAGRAM AND SCHEDULE OF QUANTITIES

RIDGE AVE. @ MULFORD ST.
EVANSTON, ILLINOIS

CITY OF EVANSTON
13_cp.dgn

T13

SCALE: NOT TO SCALE
DATE: APRIL 28, 2006

RAWN BY: DWS
CHECKED BY: PAW