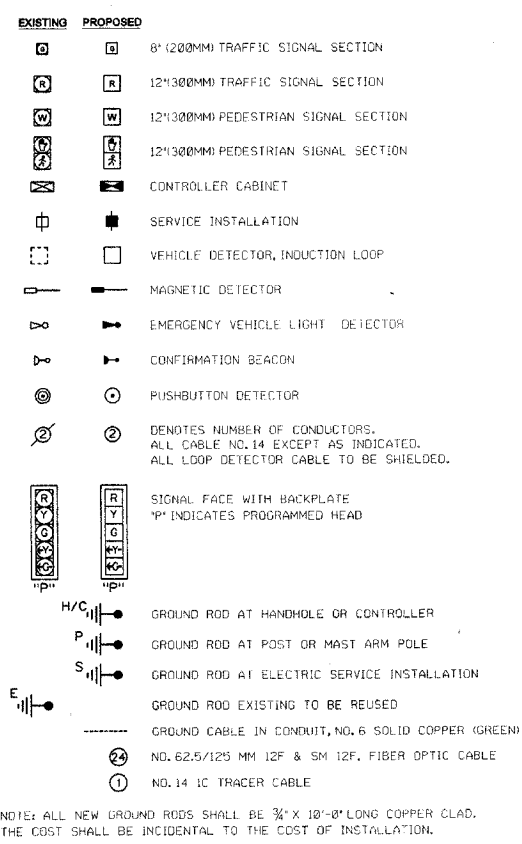


Section
99-00215-00-TL
Sheet 17

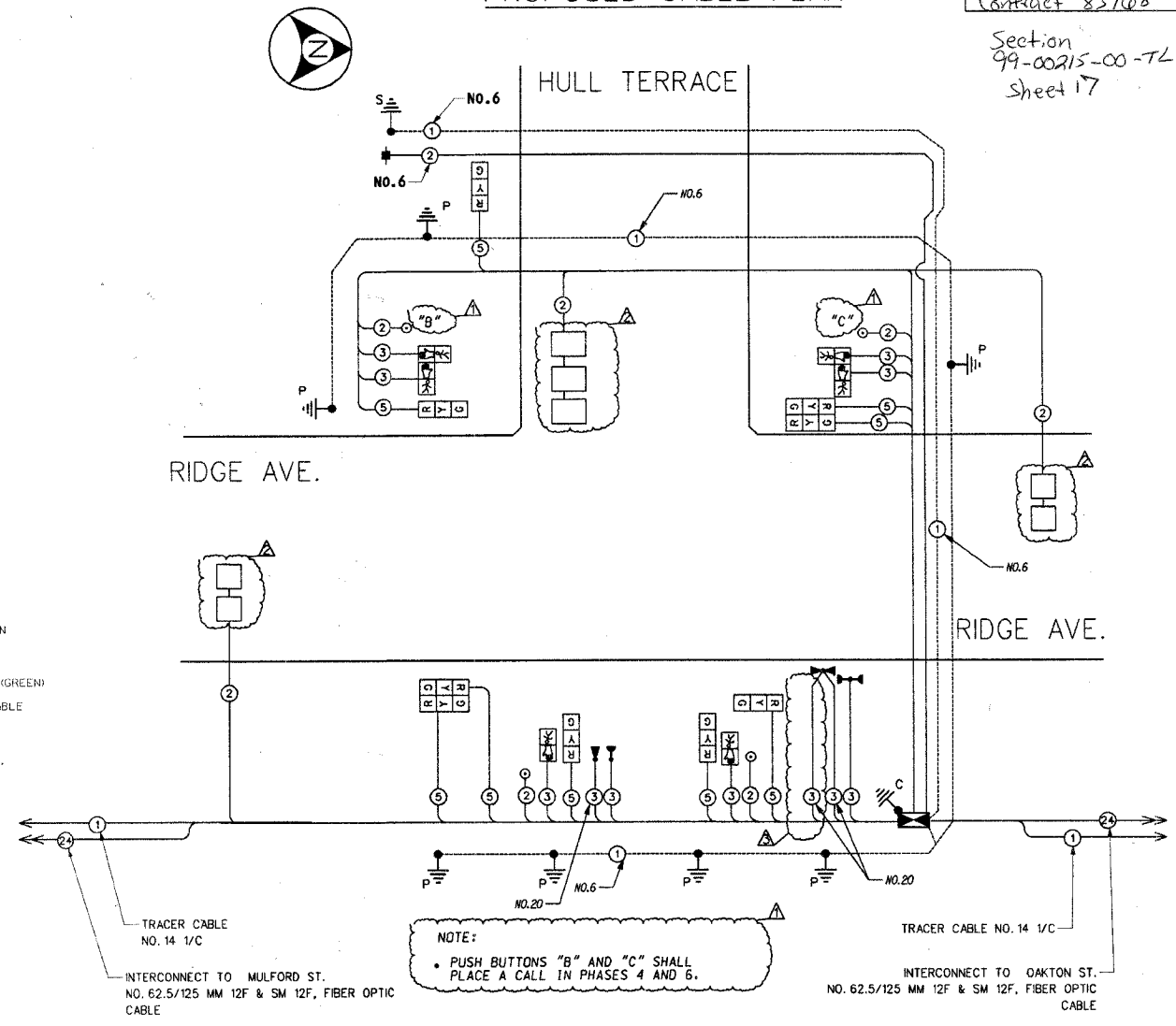
SCHEDULE OF QUANTITIES

QTY	UNIT	ITEM DESCRIPTION
70	FOOT	THERMOPLASTIC PAVEMENT MARKING-LINE 8"
202	FOOT	THERMOPLASTIC PAVEMENT MARKING-LINE 12"
50	FOOT	THERMOPLASTIC PAVEMENT MARKING-LINE 24"
74	SQ FT	THERMOPLASTIC PAVEMENT MARKING REMOVAL
1	EACH	SERVICE INSTALLATION, POLE MOUNTED
12	FOOT	CONDUIT IN TRENCH, 2 1/2" DIA., GALVANIZED STEEL
8	FOOT	CONDUIT IN TRENCH, 3" DIA., GALVANIZED STEEL
10	FOOT	CONDUIT IN TRENCH, 5" DIA., GALVANIZED STEEL
803	FOOT	CONDUIT PUSHED, 2" DIA., GALVANIZED STEEL
34	FOOT	CONDUIT PUSHED, 2 1/2" DIA., GALVANIZED STEEL
91	FOOT	CONDUIT PUSHED, 3" DIA., GALVANIZED STEEL
98	FOOT	CONDUIT PUSHED, 4" DIA., GALVANIZED STEEL
7	EACH	HANDHOLE
1	EACH	DOUBLE HANDHOLE
30	FOOT	TRENCH AND BACKFILL FOR ELECTRICAL WORK
1	EACH	FULL-ACTUATED CONTROLLER AND TYPE IV CABINET, SPECIAL
1	EACH	TRANSCIVER - FIBER OPTIC
855	FOOT	ELECTRIC CABLE IN CONDUIT, GROUNDING, NO. 6 1C
403	FOOT	ELECTRIC CABLE IN CONDUIT, SIGNAL NO. 14 2C
877	FOOT	ELECTRIC CABLE IN CONDUIT, SIGNAL NO. 14 3C
1032	FOOT	ELECTRIC CABLE IN CONDUIT, SIGNAL NO. 14 5C
859	FOOT	ELECTRIC CABLE IN CONDUIT, LEAD-IN, NO. 14 1 PAIR
244	FOOT	ELECTRIC CABLE IN CONDUIT, NO. 20 3/C, TWISTED, SHIELDED
327	FOOT	ELECTRIC CABLE IN CONDUIT, SERVICE, NO. 6 2C
5	EACH	TRAFFIC SIGNAL POST, GALVANIZED STEEL 14 FT.
2	EACH	TRAFFIC SIGNAL POST, GALVANIZED STEEL 18 FT.
28	FOOT	CONCRETE FOUNDATION, TYPE A
4	FOOT	CONCRETE FOUNDATION, TYPE D
5	EACH	SIGNAL HEAD, LED, 1-FACE, 3-SECTION, BRACKET MOUNTED
2	EACH	PEDESTRIAN SIGNAL HEAD, LED, 1-FACE, BRACKET MOUNTED
3	EACH	INDUCTIVE LOOP DETECTOR
267	FOOT	DETECTOR LOOP TYPE I
2	EACH	LIGHT DETECTOR
1	EACH	LIGHT DETECTOR AMPLIFIER
4	EACH	PEDESTRIAN PUSH-BUTTON
1	EACH	TEMPORARY TRAFFIC SIGNAL INSTALLATION
1	EACH	REMOVE EXISTING TRAFFIC SIGNAL EQUIPMENT
3	EACH	REMOVE EXISTING HANDHOLE
6	EACH	REMOVE EXISTING CONCRETE FOUNDATION
2	EACH	SIGNAL HEAD, LED, 2-FACE, 3-SECTION, BRACKET MOUNTED
2	EACH	PEDESTRIAN SIGNAL HEAD, LED, 2-FACE, BRACKET MOUNTED
1	EACH	REMOVE EXISTING SERVICE INSTALLATION

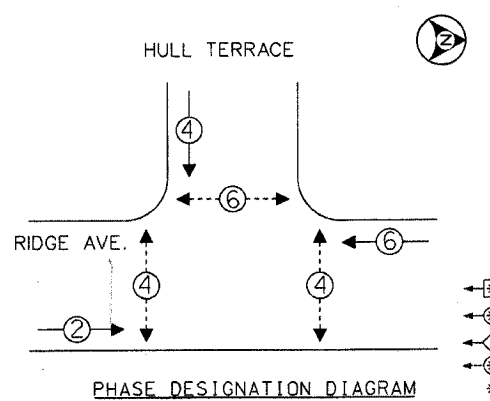
CABLE PLAN LEGEND



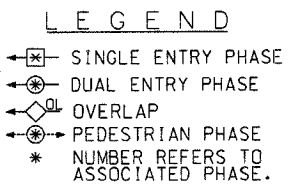
PROPOSED CABLE PLAN



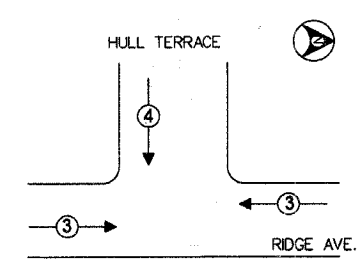
PROPOSED CONTROLLER SEQUENCE



PHASE DESIGNATION DIAGRAM



PROPOSED EMERGENCY VEHICLE PREEMPTION SEQUENCE



PROPOSED EMERGENCY VEHICLE PREEMPTORS		
EMERGENCY VEHICLE PREEMPTOR	3	4
MOVEMENT	←	↓

THE TRAFFIC SIGNAL CONTROL EQUIPMENT FOR THIS PROJECT SHALL BE "EAGLE" TO MATCH THE EXISTING ADJACENT SYSTEM.

I.D.O.T. TRAFFIC SIGNAL INSTALLATION ELECTRICAL SERVICE REQUIREMENTS					TOTAL WATTAGE
TYPE	NO. OF LAMPS	WATTAGE	INCAND	LED XX OPERATIONS	
SIGNAL (RED)	9	135	17	0.50	76.5
(YELLOW)	9	135	25	0.25	56.25
(GREEN)	9	135	15	0.25	33.75
ARROW		135	12	0.10	
PED. SIGNAL	6	90	25	1.00	150
CONTROLLER	1	100	100	1.00	100
ILLUM. SIGN		84		0.05	
FLASHER				0.50	
ENERGY COSTS TO:				TOTAL =	416.5

FOUNDATION (DEPTH)	(FT.)	CABLE SLACK	(FT.)	VERTICAL	(FT.)
TYPE A - POST	4	HANDHOLE	6.5	ALL FOUNDATIONS	3.5
D - CONTROLLER	4	DOUBLE HANDHOLE	13	MAST ARM (L) POLE	20'+L-2 =
E - M ARM POLE		SIGNAL POST	2	BRACKET MOUNTED	13
24"	10	CONTROLLER CAB.	1	PED. PUSHBUTTON	4
30"	15	FIBER OPTIC	13	ELECTRIC SERVICE	13.5
		ELECTRIC SERVICE	1	SERVICE TO GROUND	13.5
		GROUND CABLE	1	POST MOUNTED	6

REVISIONS		
NO.	DATE	DESCRIPTION
Δ	06-08-06	MISCELLANEOUS REVISION
Δ	11-15-06	DETECTOR LOOPS AND SYSTEM DETECTOR LOOPS TO BE INSTALLED BY OTHERS AT A LATER DATE
Δ	11-15-06	EVP REVISIONS

CABLE PLAN, PHASE DESIGNATION DIAGRAM AND SCHEDULE OF QUANTITIES

RIDGE AVE. @ HULL TERRACE
EVANSTON, ILLINOIS

CITY OF EVANSTON
17_cpR.dgn

T17

SCALE: NOT TO SCALE
DATE: APRIL 28, 2006

DRAWN BY: DWS
CHECKED BY: PAW