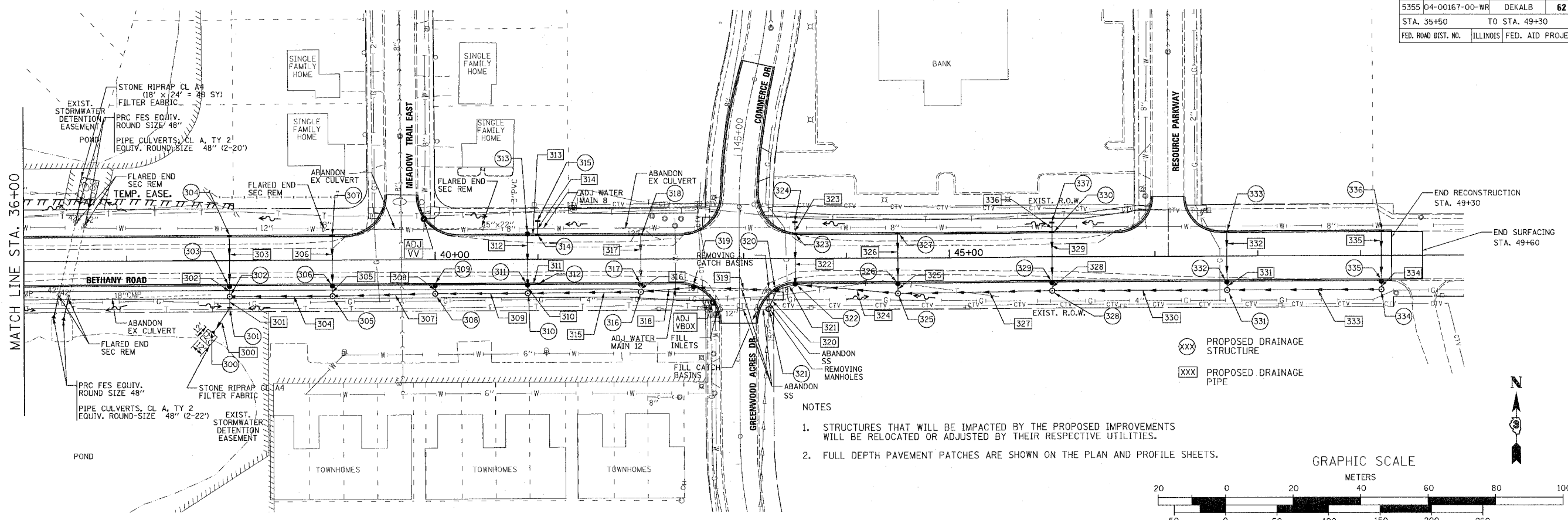
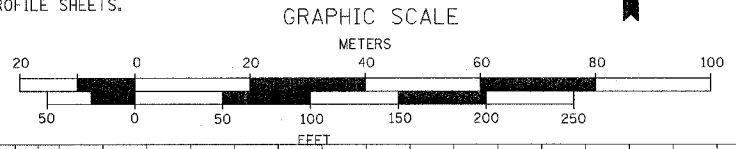


F.A.U. RTE.	SECTION	COUNTY	TOTAL SHEETS	SHEET NO.
5355	04-00167-00-WR	DEKALB	62	22
STA. 35+50		TO STA. 49+30		
FED. ROAD DIST. NO.		ILLINOIS FED. AID PROJECT		

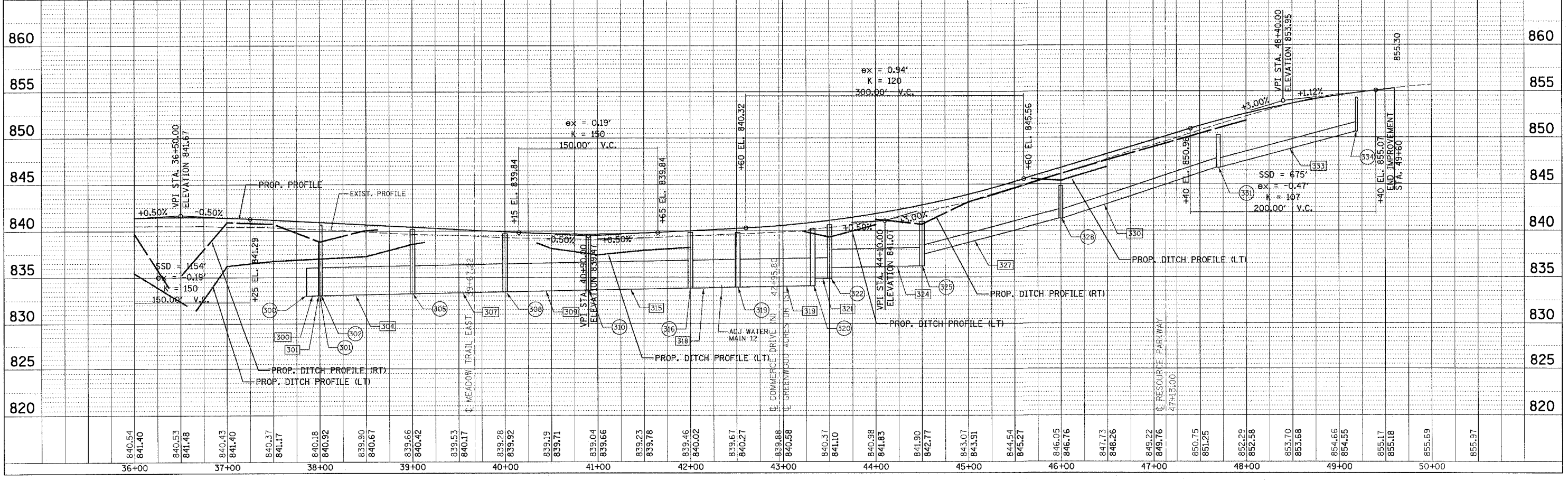
PLAN	SURVEYED	BY	DATE
NOTE BOOK	PLOTTED		
NO.	CHECKED		
	BY		
	DATE		



- NOTES
- STRUCTURES THAT WILL BE IMPACTED BY THE PROPOSED IMPROVEMENTS WILL BE RELOCATED OR ADJUSTED BY THEIR RESPECTIVE UTILITIES.
 - FULL DEPTH PAVEMENT PATCHES ARE SHOWN ON THE PLAN AND PROFILE SHEETS.



PROFILE	SURVEYED	BY	DATE
NOTE BOOK	PLOTTED		
NO.	CHECKED		
	BY		
	DATE		



PLOT DATE = 8/16/2007
 FILE NAME = H:\DK\KALB\157283-BethanyRd\Civil\Dgn\Sh1\DU02.dgn
 PLOT SCALE = 1"=50'
 USER NAME = JUSER