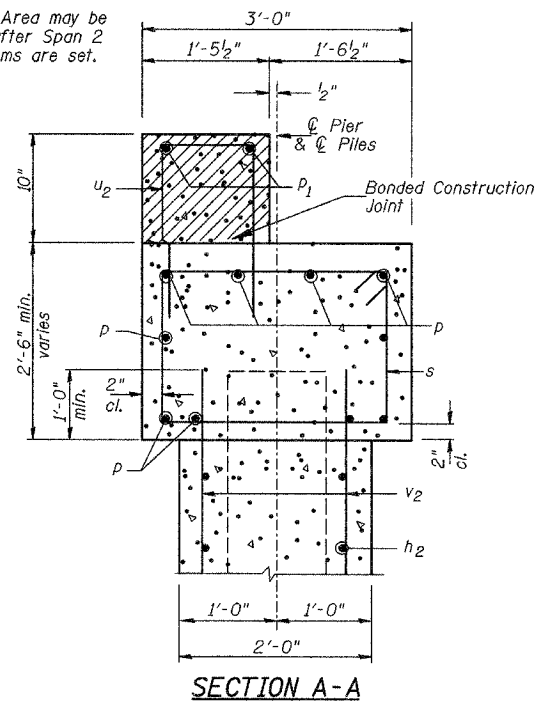
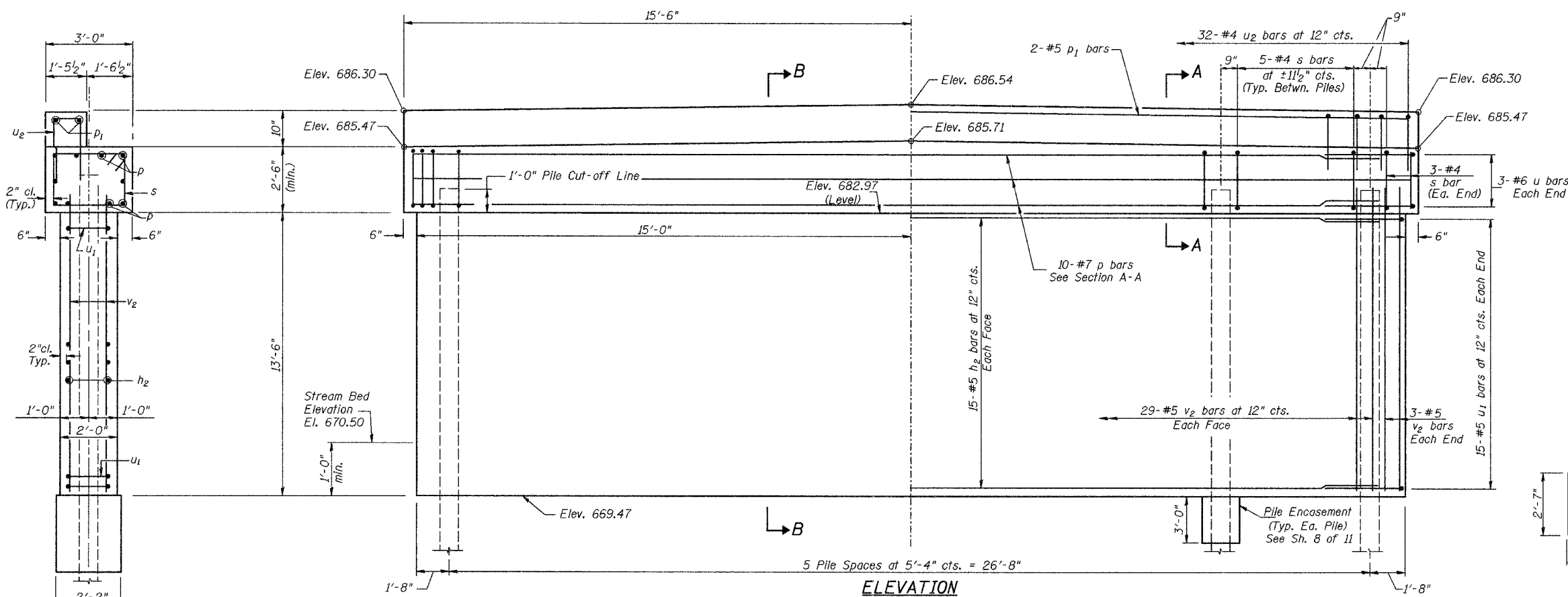
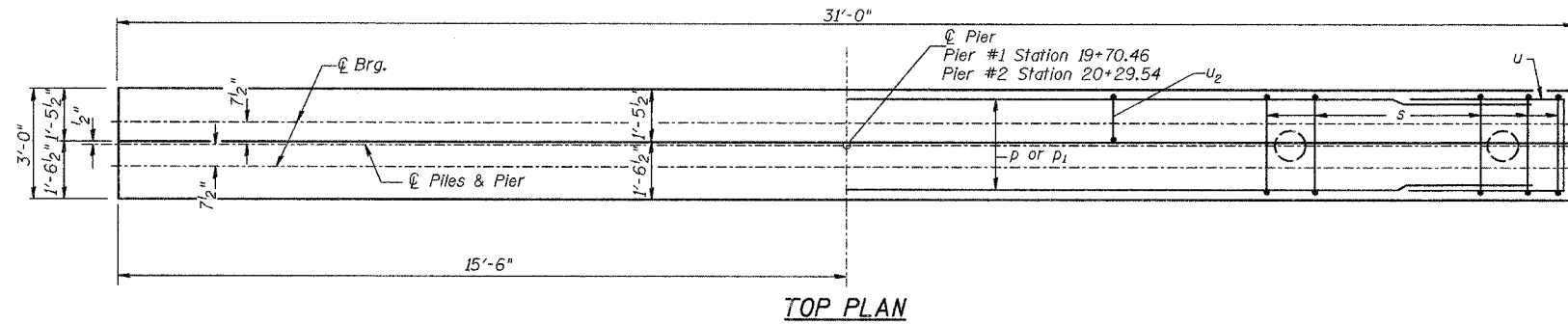
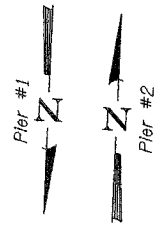


NOTES:
All edges shall have standard
3/4" chamfer.

ROUTE NO.	SECTION	COUNTY	TOTAL SHEETS	SHEET NO.
TR 434	*	IROQUOIS	23	13
FED. ROAD DIST. NO. 7	ILLINOIS	PROJECT	BROS-075(131)	
*06-26102-01-BR		CONTRACT #87356		

SHEET NO. 7
OF 11 SHEETS



**TWO PIERS
BILL OF MATERIAL**

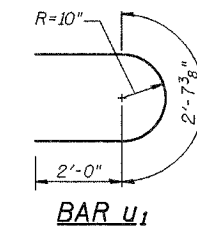
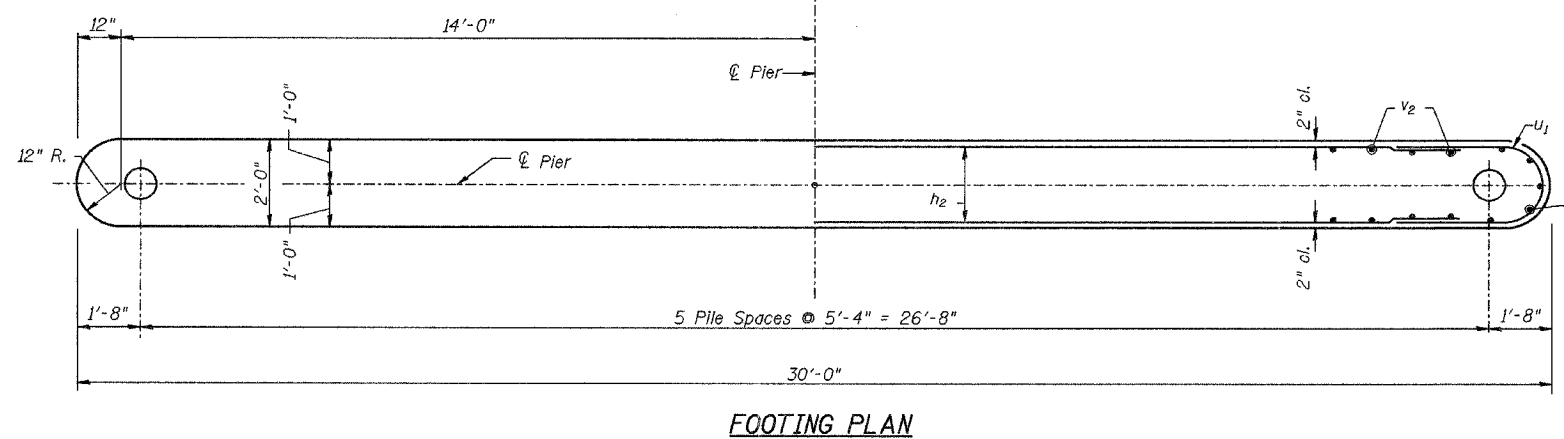
BAR	NO.	SIZE	LENGTH	SHAPE
h ₂	60	#5	27'-8"	—
p	20	#7	30'-9"	—
p ₁	4	#5	30'-9"	—
s	62	#4	10'-5"	□
u	12	#6	11'-7"	⊏
u ₁	60	#5	6'-8"	⊏
u ₂	64	#4	4'-5"	⊏
v ₂	128	#5	14'-4"	—

Concrete Structures	CU YD	75.0
① Reinforcement Bars	POUND	6,280
Structure Excavation	CU YD	10
Furnishing Metal Shell Piles 12"	FOOT	462
Driving Piles	FOOT	462
Test Pile Metal Shells	EACH	1
Pile Shoes	EACH	12
Concrete Encasement	CU YD	5.2
① Underwater Structure Excavation Protection, Location 1	EACH	1
① Underwater Structure Excavation Protection, Location 2	EACH	1

① See Special Provisions

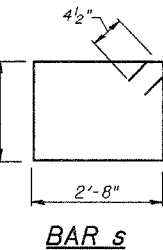
SECTION B-B

PILE DATA
Type & Size: Metal Shell-12" x 0.25" walls w/ pile shoes
Nominal Required Bearing: 345 kips
Allowable Resistance Available: 115 kips
Est. Length: 42' Each Pier
No. Req'd.: 12 (Includes 1 Test Pile at Pier #1)



BAR U

BAR U3



BAR S

PIERS
T.R. 434 OVER MUD CREEK
SECTION 06-26102-01-BR
IROQUOIS COUNTY
STATION 20+00.00