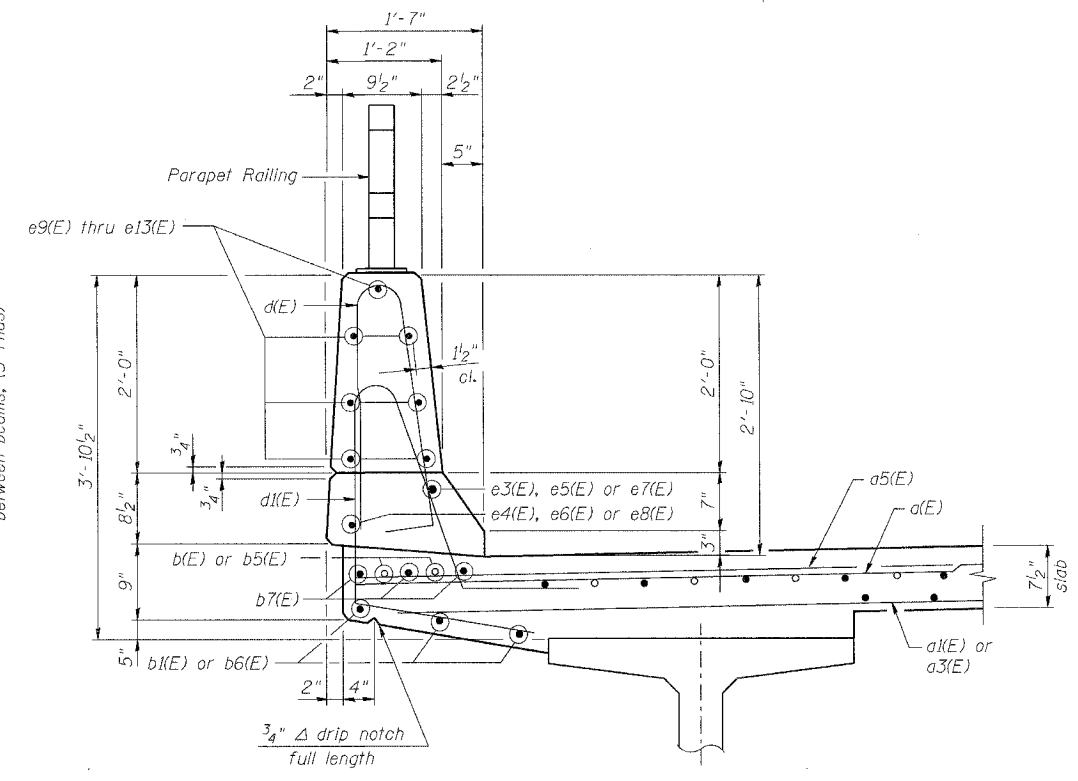
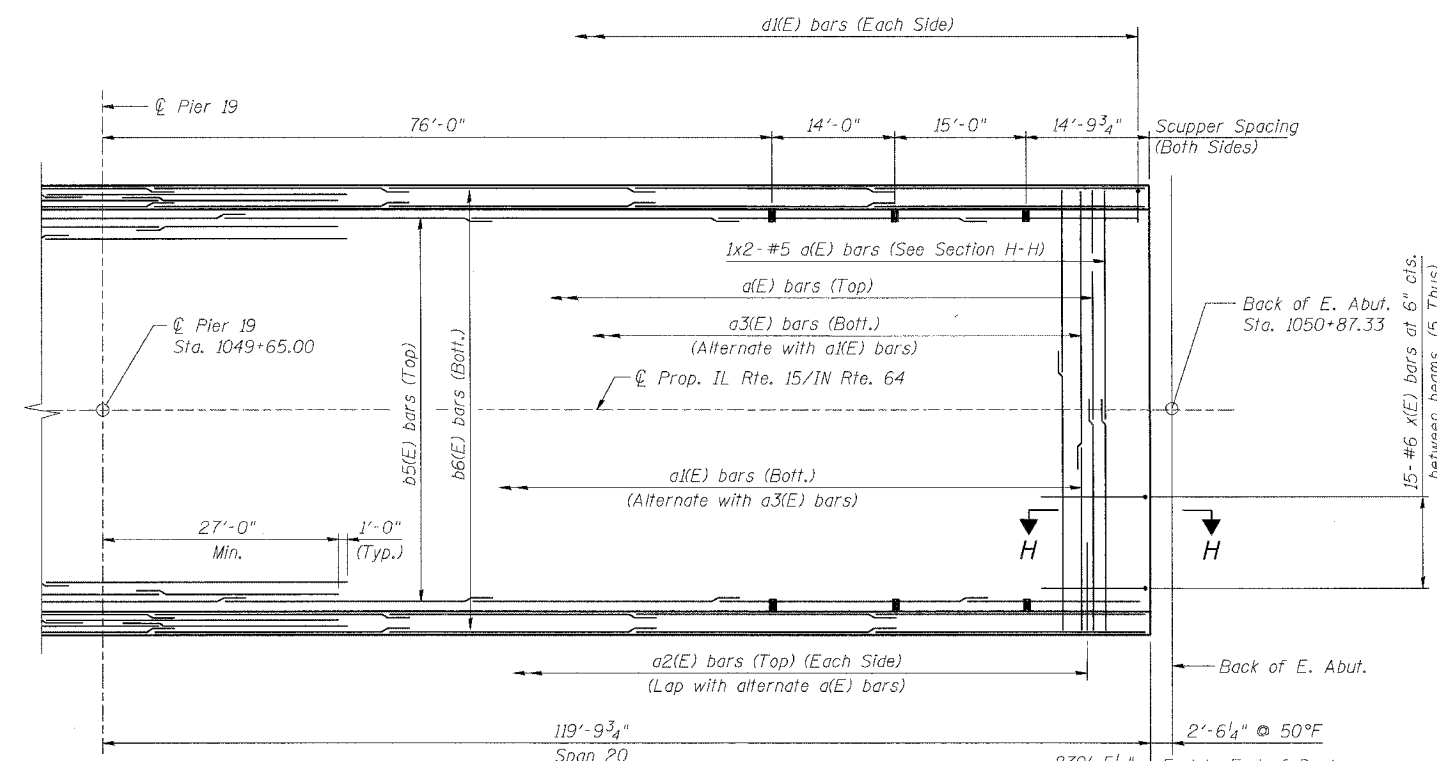
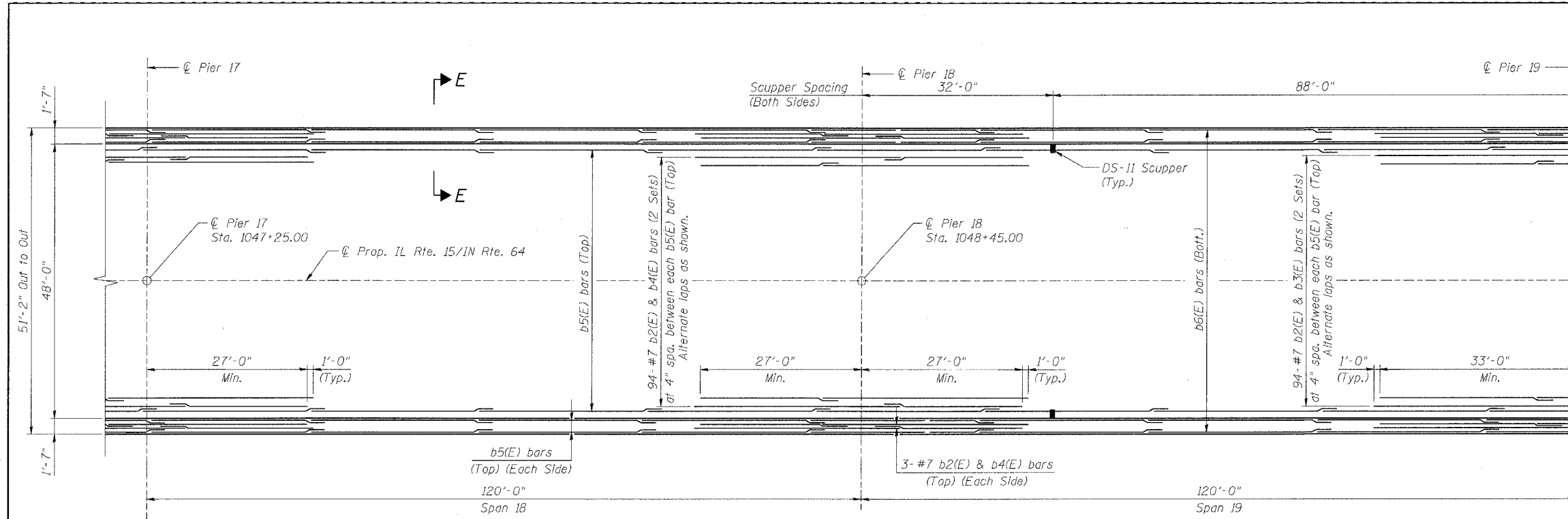


ROUTE No.	SECTION	COUNTY	TOTAL SHEETS	SHEET NO.
F.A.P. 827	12Z-3, 12BR	WABASH, IL GIBSON, IN	158	45
STA.		TO STA.		
F.H.W.A. REGION		ILLINOIS	PROJECT	

BRIDGE SHEET S29 OF S114 CONTRACT NO. 94450



- NOTES:**
1. Work this Sheet with Sheets S30-S36.
 2. Reinforcement bars designated (E) shall be epoxy coated.
 3. Bars indicated thus 6x2-#5 etc., indicates 6 lines of bars with 2 lengths per line.
 4. For parapet elevation, details, joint spacing and reinforcement, See Sheets S31-S34.
 5. Use the following minimum lap lengths unless noted otherwise:
#5 - 2'-2", #7 - 3'-5".
 6. See Sheet S35 for additional reinforcement around scuppers.
 7. See Sheet S48 for Section H-H and additional reinforcing.
 8. I.F. denotes Inside Face.
O.F. denotes Outside Face.

**PARTIAL PLAN
SPAN 18 THRU 20**

**SECTION E-E
Spans 1-4 and 10-20**

ILLINOIS DEPARTMENT OF TRANSPORTATION
IL ROUTE 15/IN ROUTE 64
OVER WABASH RIVER PUBLIC WATERS
FAP 827 SECT 12Z-3, 12BR
**DECK REINFORCEMENT PLAN
SPANS 18, 19 AND 20 (UNIT 4)**

benesch
alfred benesch & company
Engineers • Surveyors • Planners
205 North Michigan Avenue, Suite 2400
Chicago, Illinois 60601
312-565-0450
Job No. 3428

SN: 093-0021 (IL)/9502700 (IN) STA. 1036-27
WABASH CO., IL. DATE: JUNE 15, 2007

m:\proj\3426\stage_2\structures\design\super\sdtr\007.dgn 12:59:58 PM 6/26/2007

DESIGNED	WJZ
CHECKED	ADD/KWS
DRAWN	WJZ
CHECKED	ADD/KWS