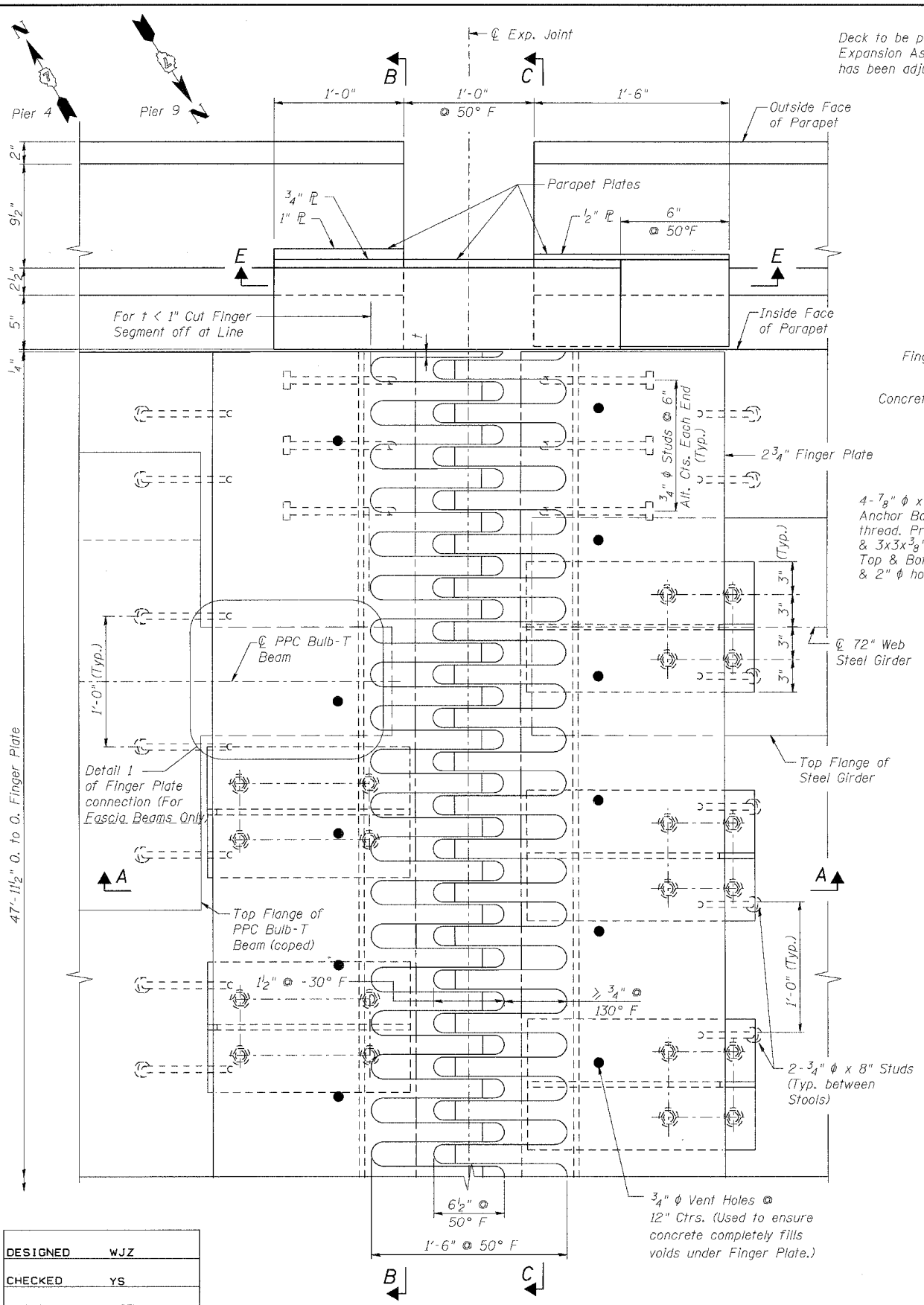
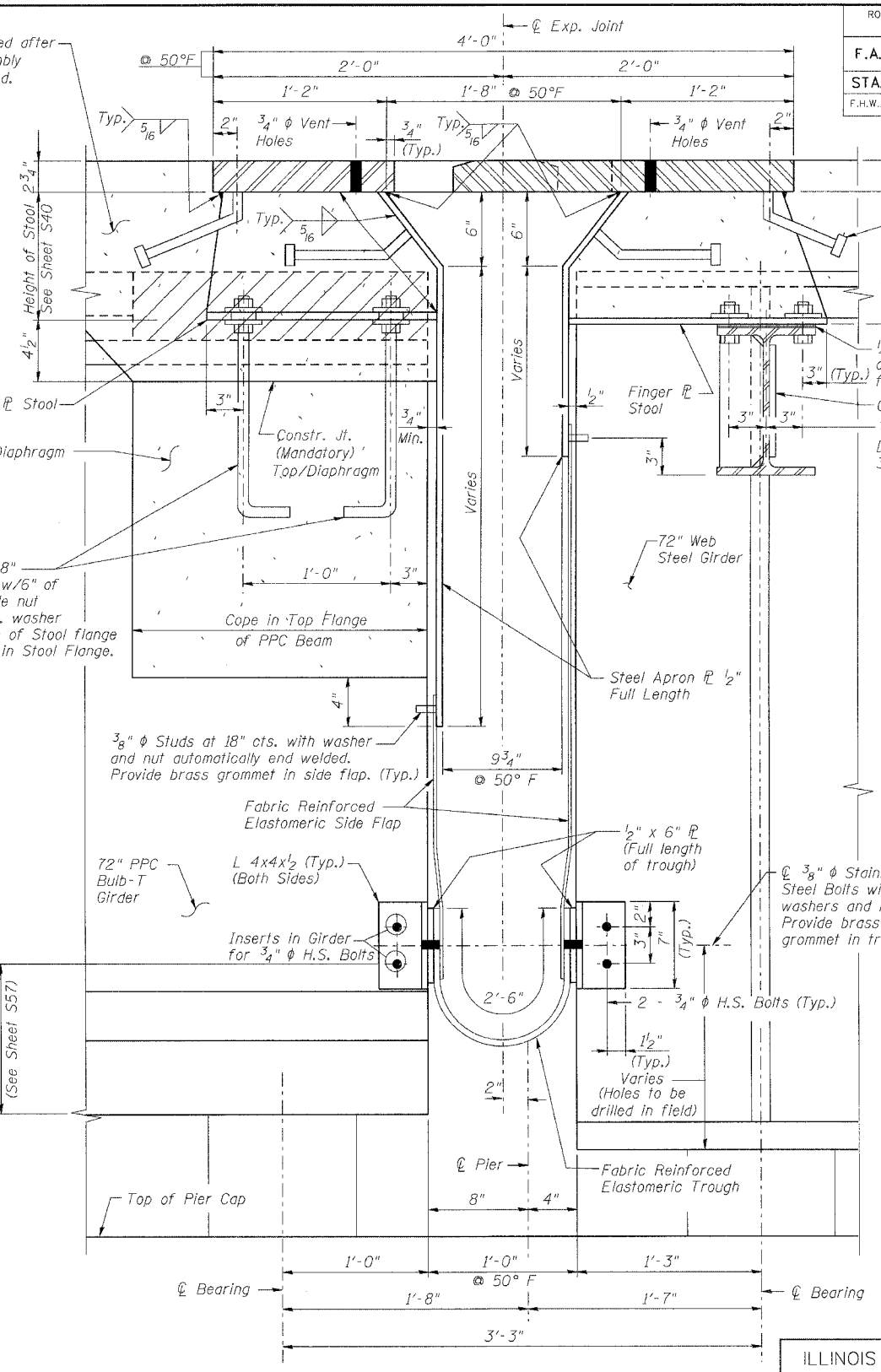


ROUTE No.	SECTION	COUNTY	TOTAL SHEETS	SHEET NO.
F.A.P. 827	12Z-3, 12BR	WABASH, IL GIBSON, IN	158	55
STA.		TO STA.		
F.H.W.A. REGION		ILLINOIS	PROJECT	

BRIDGE SHEET S39 OF S114 CONTRACT 94450



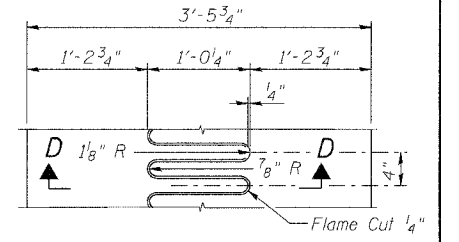
**PLAN OF FINGER PLATE**  
(At Pier 4 shown  
At Pier 9 Opposite Hand)



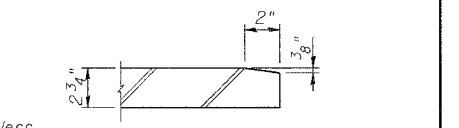
**SECTION A-A**  
(Shown at Pier 4,  
Pier 9 opposite hand)

3/4" φ x 8" Granular or Solid flux filled headed studs conforming to Art. 1006.32 of the Std. Specifications (Typ.)

1/4" normal shim plus one 1/8" & one 1/16" shims for height adjustment  
Gusset PL  
7/8" φ H.S. Bolts, 4 at each connection. Drill 2" φ holes in Stool flange, provide 3"x3"x3/8" square washers.



**FLAME CUTTING DIAGRAM**



**SECTION D-D**

- NOTES:**
1. Work this sheet with sheet S40.
  2. For Bulb-T PPC Beam Coping and End diaphragm details see sheet S48.
  3. For Detail 1 see sheet S42.
  4. All steel for Finger Plate Joint shall conform to AASHTO M270 specification, Gr. 50.
  5. Design expansion ± 4.85".
  6. The cost of steel required for Finger Plate Joint Assembly shall be paid for under "Furnishing and Erecting Structural Steel". The cost of all bolts (i.e. Anchor, High Strength, Expansion, Stainless Steel, etc.) shall be included in the price for "Furnishing and Erecting Structural Steel".

ILLINOIS DEPARTMENT OF TRANSPORTATION  
IL ROUTE 15/IN ROUTE 64  
OVER WABASH RIVER PUBLIC WATERS  
FAP 827 SECT 12Z-3, 12BR  
**FINGER PLATE EXPANSION JOINT  
PIER 4 AND PIER 9**

SN: 093-0021 (IL)/9502700 (IN) STA. 1036+27  
WABASH CO., IL. DATE: JUNE 15, 2007

m:\proj\3426\stage\_2\structures\design\super\sejdt001.dgn 10:20 PM 6/26/2007

**benesch**  
alfred benesch & company  
Engineers • Surveyors • Planners  
205 North Michigan Avenue, Suite 2400  
Chicago, Illinois 60601  
312-566-0450  
Job No. 3426