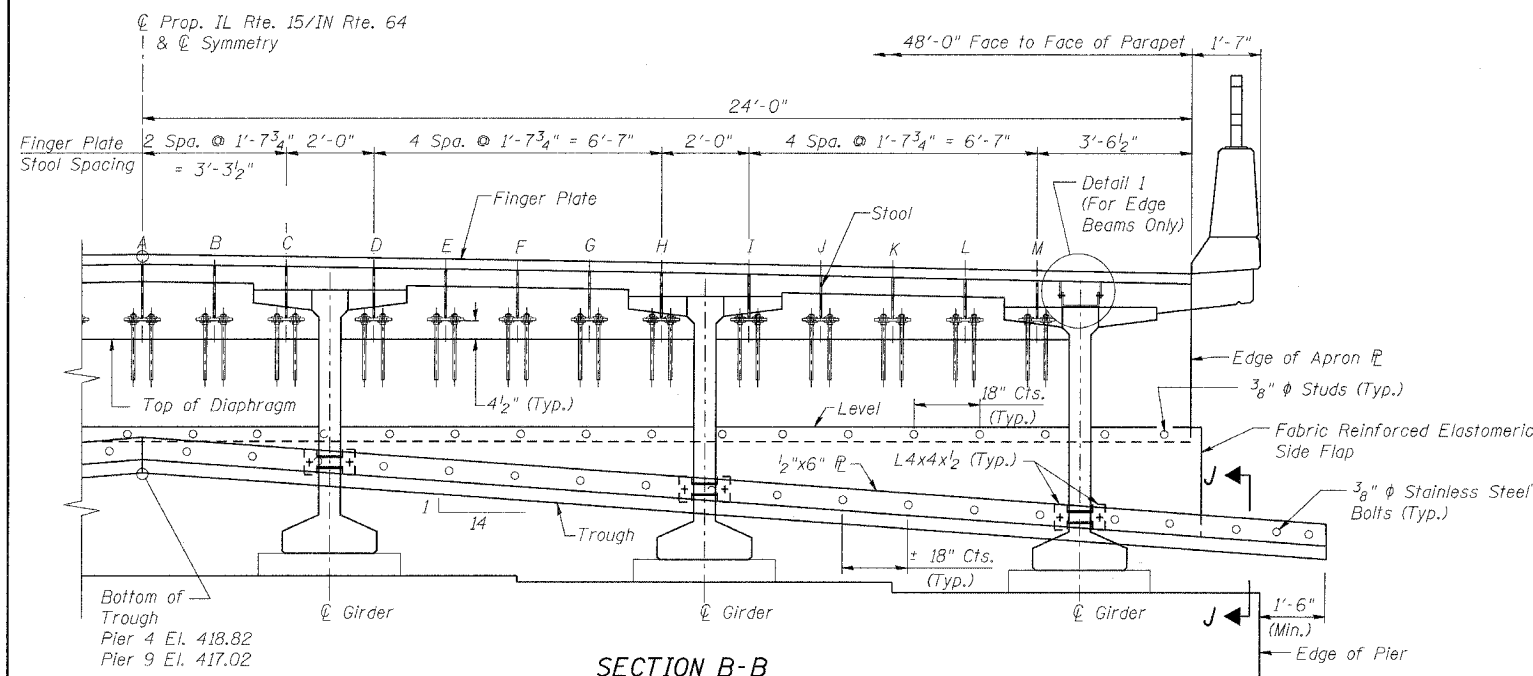


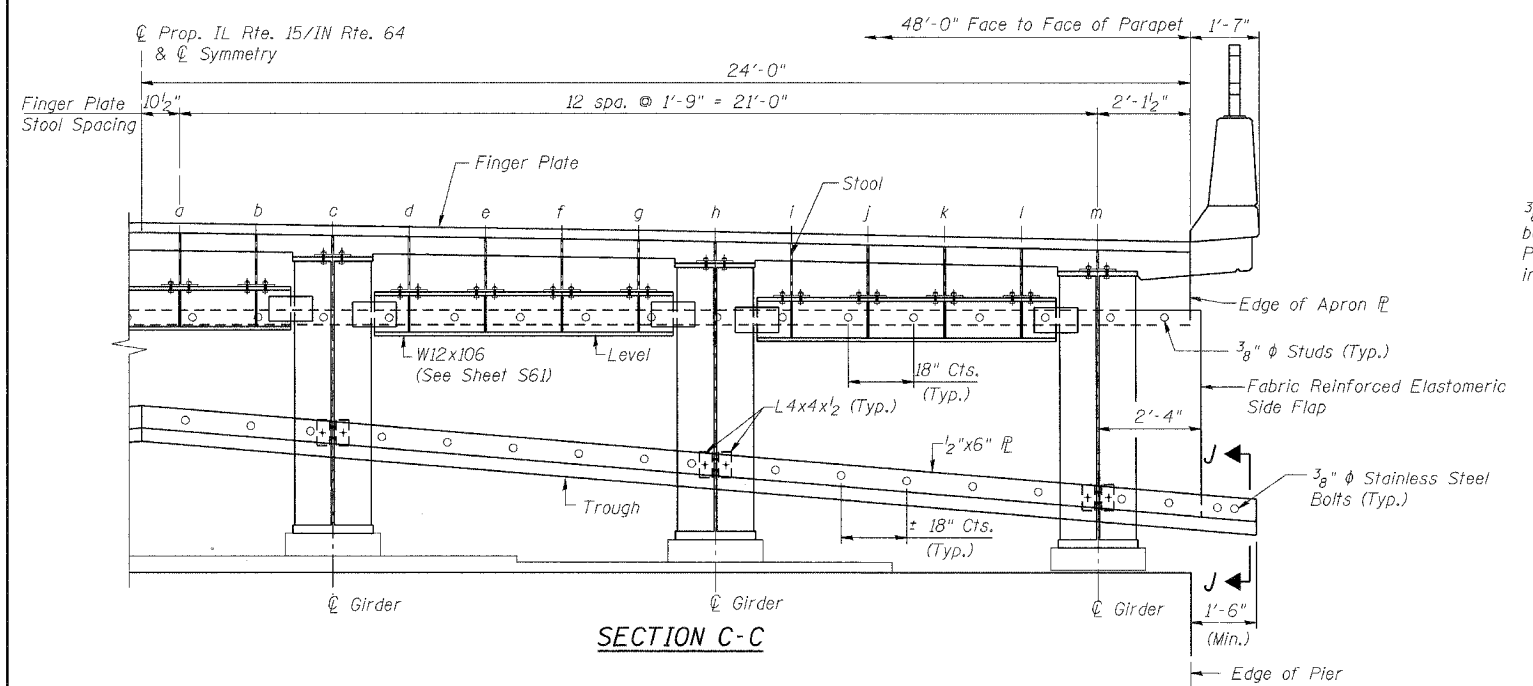
ROUTE No.	SECTION	COUNTY	TOTAL SHEETS	SHEET NO.
F.A.P. 827	12Z-3, 12BR	WABASH, IL GIBSON, IN	158	56
STA.		TO STA.		
F.H.W.A. REGION		ILLINOIS	PROJECT	

BRIDGE SHEET S40 OF S114

CONTRACT NO. 94450



SECTION B-B

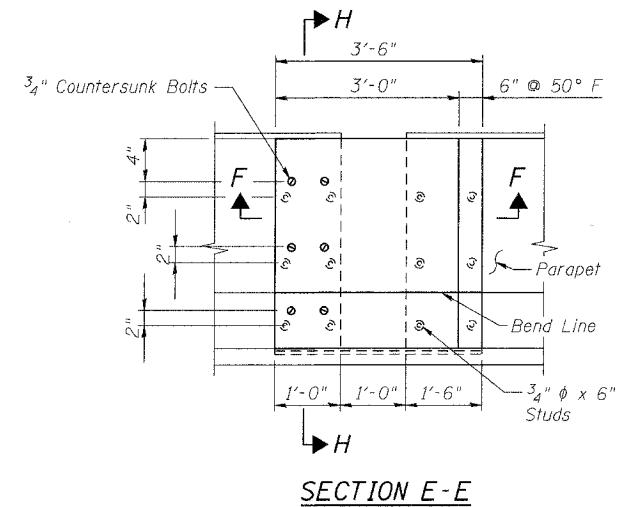


SECTION C-C

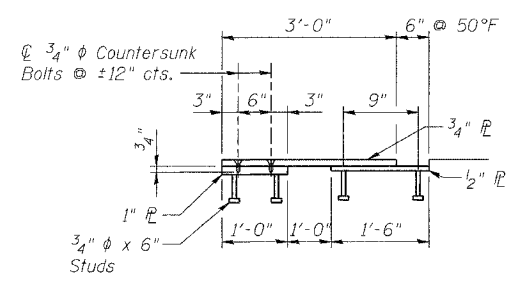
STOOL HEIGHTS (IN)

	A	B	C	D	E	F	G	H	I	J	K	L	M
SECTION B-B	16 1/8	15 7/8	15 5/8	15 2/8	14 7/8	14 5/8	14 3/8	14	13 5/8	13 1/8	12 6/8	12 3/8	12
	a	b	c	d	e	f	g	h	i	j	k	l	m
SECTION C-C	10 4/8	10 1/8	5 7/8	11 1/8	10 7/8	10 4/8	10 2/8	5 7/8	11 3/8	11	10 4/8	10 1/8	5 6/8

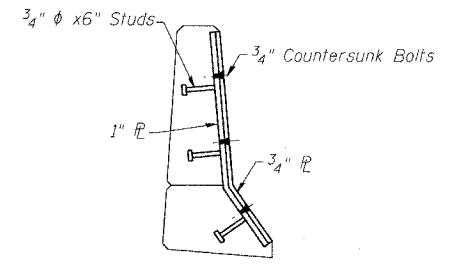
**NOTE:**  
Stool heights and spacing are symmetrical about Prop. IL Rte. 15/IN Rte.-64.



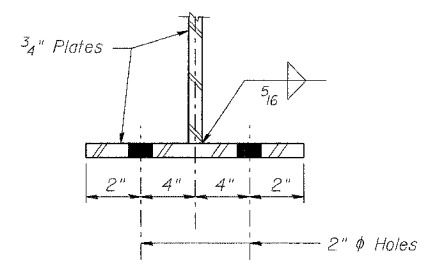
SECTION E-E



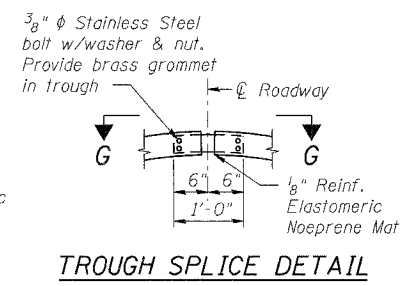
SECTION F-F



SECTION H-H



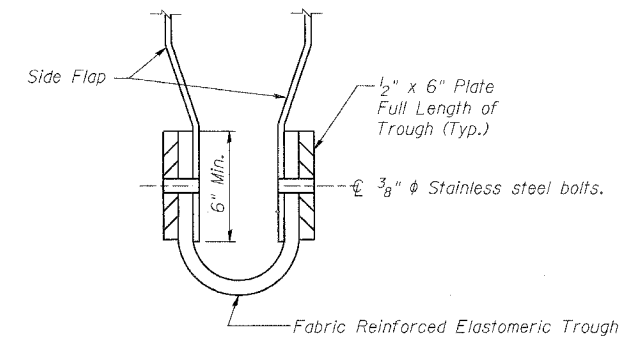
FINGER PLATE STOOL DETAIL



TROUGH SPLICE DETAIL



VIEW G-G



SECTION J-J

BILL OF MATERIAL

ITEM	UNIT	QUANTITY
Fabric Reinforced Elastomeric Trough	FOOT	104.4

- NOTES:**
1. Work this sheet with sheet S39.
  2. For Detail 1, see sheet S42.
  3. For Finger Plate and Parapet Plate painting schematics, see sheet S42.

**benesch**

alfred benesch & company  
Engineers - Surveyors - Planners  
205 North Michigan Avenue, Suite 2400  
Chicago, Illinois 60601  
312-665-0450  
Job No. 3429

ILLINOIS DEPARTMENT OF TRANSPORTATION  
IL ROUTE 15/IN ROUTE 64  
OVER WABASH RIVER PUBLIC WATERS  
FAP 827 SECT 12Z-3, 12BR  
FINGER PLATE EXPANSION JOINT  
PIER 4 AND PIER 9

SN: 093-0021 (IL)/9502700 (IN) STA. 1036+27  
WABASH CO., IL. DATE: JUNE 15, 2007

m:\pro\3426\stage\_2\structures\design\super\sej\dt002.dgn 6/26/2007 1:00:23 PM