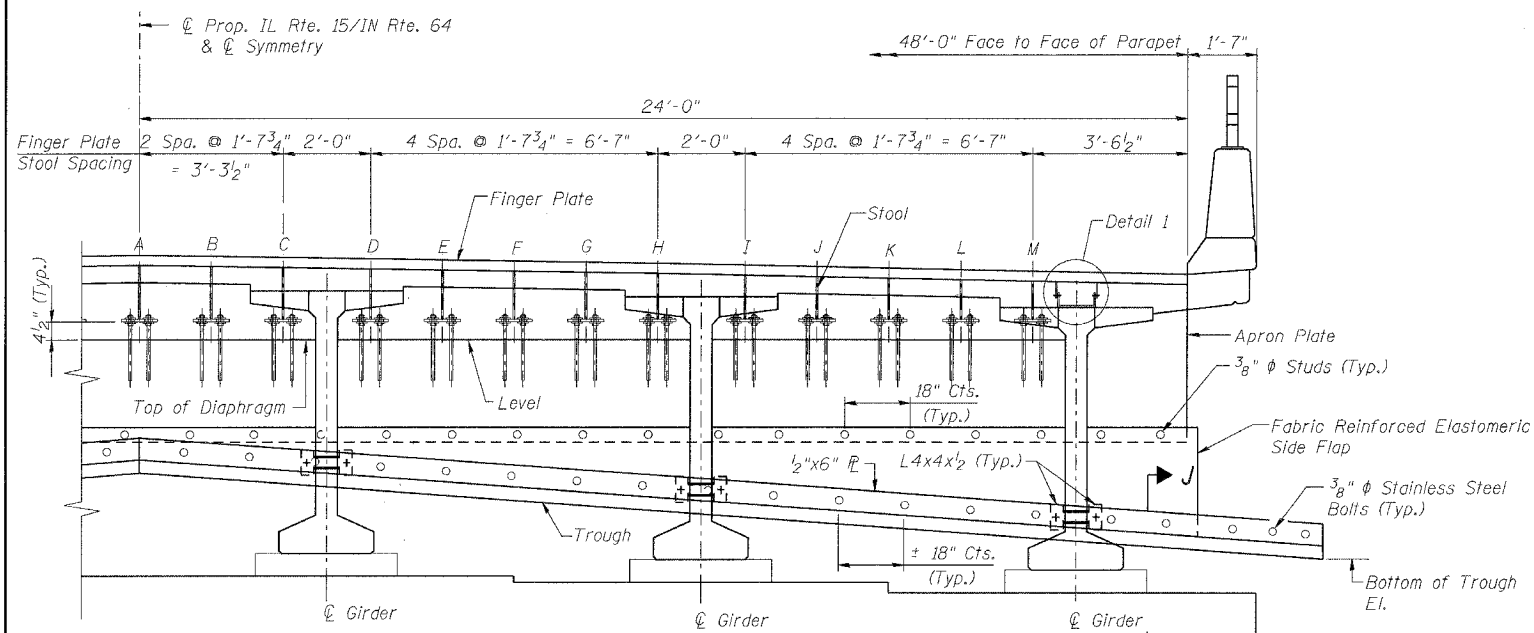
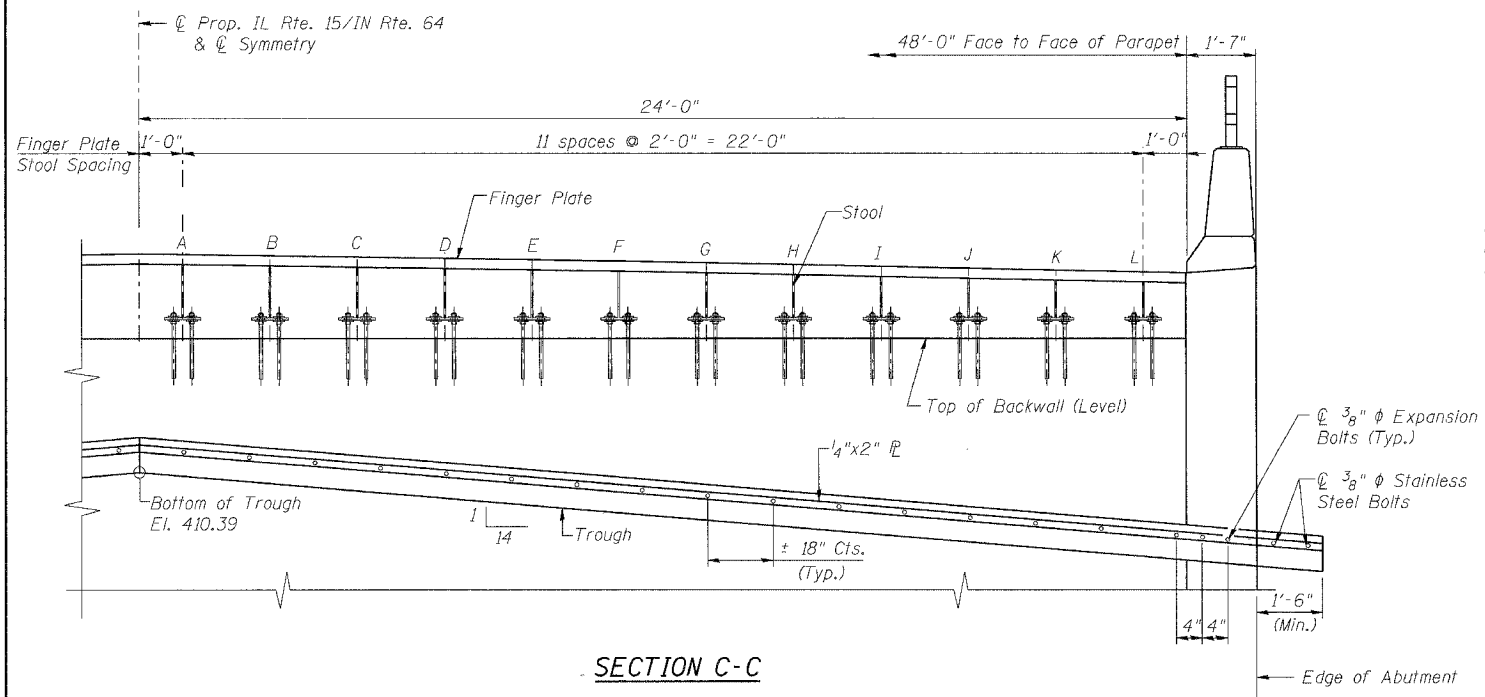


ROUTE No.	SECTION	COUNTY	TOTAL SHEETS	SHEET NO.
F.A.P. 827	12Z-3, 12BR	WABASH, IL GIBSON, IN	158	60
STA.	TO STA.		PROJECT	
F.H.W.A. REGION	ILLINOIS	CONTRACT NO. 94450		

BRIDGE SHEET S44 OF S114



SECTION B-B

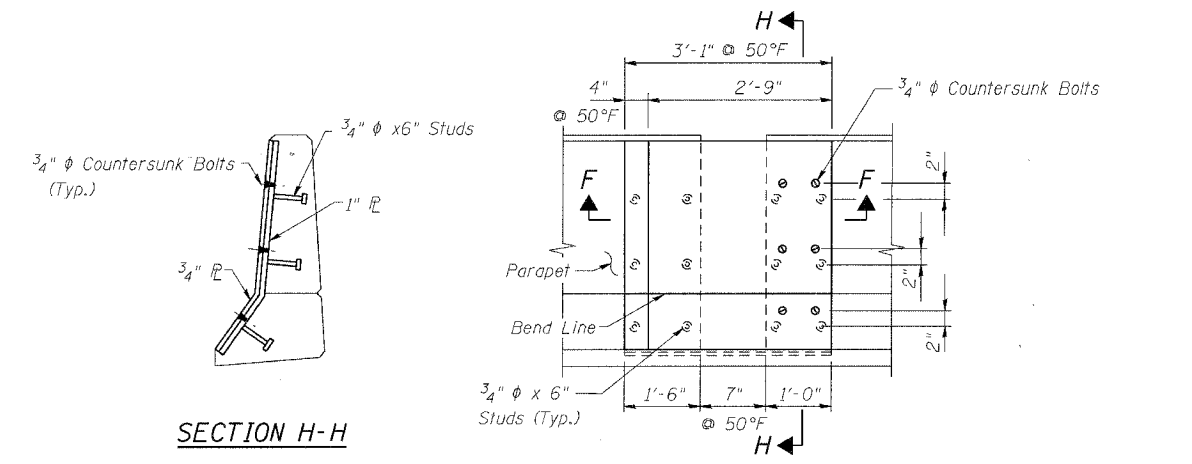


SECTION C-C

STOOL HEIGHTS (IN)

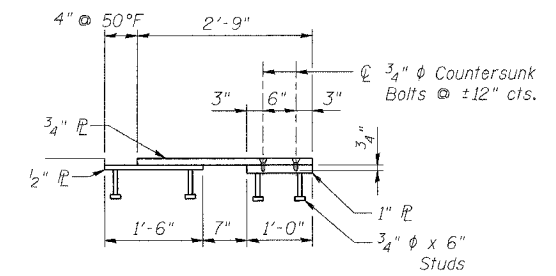
	A	B	C	D	E	F	G	H	I	J	K	L	M
SECTION B-B	17 2/8	17	16 6/8	16 3/8	16	15 6/8	15 4/8	15 1/8	14 6/8	14 2/8	13 7/8	13 4/8	13 1/8
	A	B	C	D	E	F	G	H	I	J	K	L	
SECTION C-C	14 5/8	14 1/8	13 6/8	13 3/8	13	12 5/8	12 2/8	11 6/8	11 2/8	10 6/8	10 3/8	9 7/8	

**NOTE:**  
Stool heights and spacing are symmetrical about  $\bar{C}$  Prop. IL Rte. 15/IN Rte. 64.

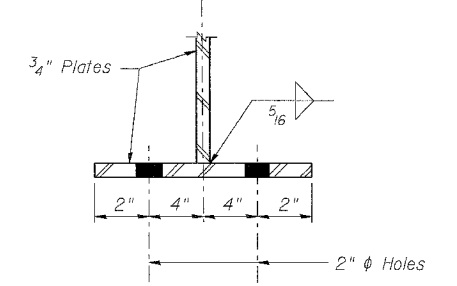


SECTION H-H

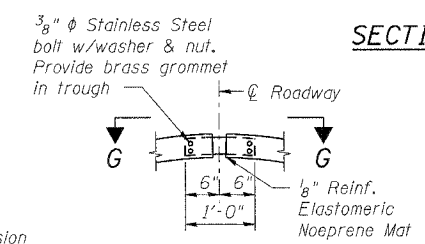
SECTION E-E



SECTION F-F



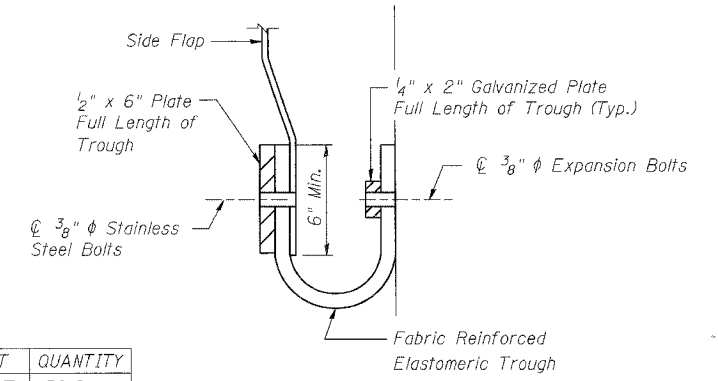
FINGER PLATE STOOL DETAIL



TROUGH SPLICE DETAIL



VIEW G-G



SECTION J-J

BILL OF MATERIAL

ITEM	UNIT	QUANTITY
Fabric Reinforced Elastomeric Trough	FOOT	52.2

- NOTES:**
1. Work this sheet with sheet S43.
  2. For Detail 1, see sheet S42.
  3. For Finger Plate and Parapet Plate painting schematics, see sheet S42.

ILLINOIS DEPARTMENT OF TRANSPORTATION  
IL ROUTE 15/IN ROUTE 64  
OVER WABASH RIVER PUBLIC WATERS  
FAP 827 SECT 12Z-3, 12BR  
**FINGER PLATE EXPANSION JOINT  
EAST ABUTMENT**

**benesch**

alfred benesch & company  
Engineers • Surveyors • Planners  
205 North Michigan Avenue, Suite 2400  
Chicago, Illinois 60601  
312-565-0450  
Job No. 3426

SN: 093-0021 (IL)/9502700 (IN) STA. 1036+27  
WABASH CO., IL. DATE: JUNE 15, 2007

m:\proj\3426\stage-2\structures\design\super\sej\dt006.dgn 1:00:33 PM 6/26/2007