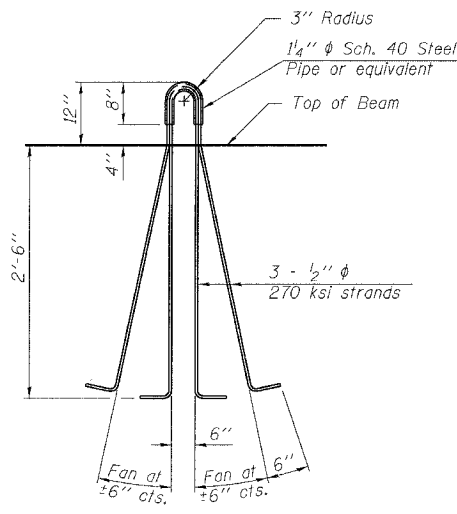
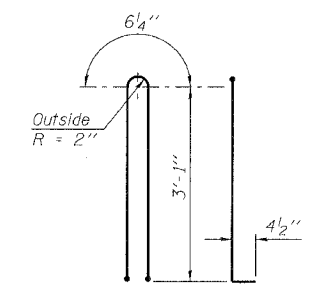


ROUTE No.	SECTION	COUNTY	TOTAL SHEETS	SHEET NO.
F.A.P. 827	12Z-3, 12BR	WABASH, IL GIBSON, IN	158	72
STA.		TO STA.		
F.H.W.A. REGION		ILLINOIS	PROJECT	

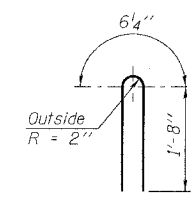
BRIDGE SHEET S56 OF S114 CONTRACT 94450



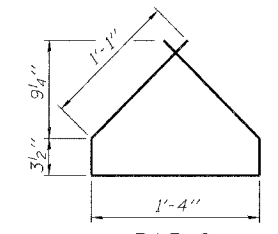
LIFTING LOOP DETAIL



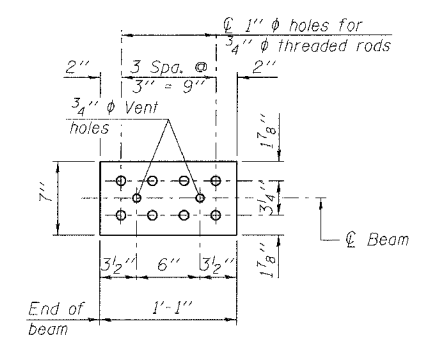
BAR G1



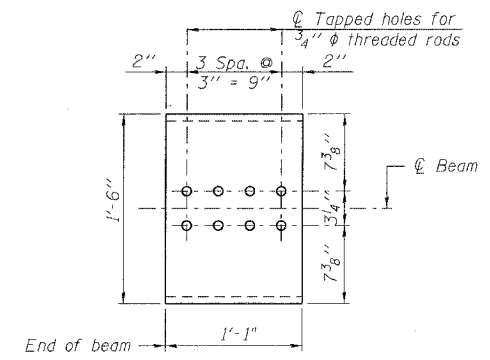
BAR G2



BAR G4



TOP PLATE



BOTTOM PLATE

BILL OF MATERIAL

Item	Unit	Total
Furnishing and Erecting Precast Prestressed Concrete I-Beams, 36"	Ft.	255.0

NOTES:

1. Inserts for 3/4" ϕ threaded dowel rods, when specified, are to be two strut, coil type for interior beams and single coil, flared loop type for exterior beams.
2. Prestressing steel shall be uncoated high strength, low relaxation 7-wire strand, Grade 270.
3. The nominal diameter shall be 1/2" and the nominal cross-sectional area shall be 0.153 sq. in.
4. Non-prestressing steel shall conform to ASTM A706 (IL Mod) Grade 60.
5. A minimum 2 1/2" ϕ lifting pin shall be used to engage the lifting loops during handling.
6. Reinforcement bars designated (E) shall be epoxy coated.
7. The bottom plates and studs shall be galvanized according to AASHTO M111.
8. Threaded rods shall be ASTM F 1554 Grade 55.
9. The cut strands at each beam end shall be given two coats of zinc dust spray or paint meeting the requirements of ASTM A 780. The zinc dust spray or paint shall be applied before corrosion appears and allowed to dry according to the manufacturer's specifications prior to another coat of zinc. A concrete sealer meeting the requirements of Section 587 of the Standard Specifications shall be applied to all portions of the I-beam or Bulb-T beam, except the top surface of the top flange and the bottom surface of the bottom flange, starting at each beam end and extending out a distance of 36 inches. The sealer shall be applied after visible crack growth has subsided. This work shall be performed by the producer and included with the cost of the beam.

DESIGNED	KWS
CHECKED	MRB
DRAWN	VLM
CHECKED	KWS

benesch

alfred benesch & company
Engineers - Surveyors - Planners
205 North Michigan Avenue, Suite 2400
Chicago, Illinois 60601
312-565-0450
Job No. 3426

ILLINOIS DEPARTMENT OF TRANSPORTATION
IL ROUTE 15/IN ROUTE 64
OVER WABASH RIVER PUBLIC WATERS
FAP 827 SECT 12Z-3, 12BR
36" PPC I-BEAM DETAILS

SN: 093-0021 (IL)/9502700 (IN) STA. 1036+27
WABASH CO., IL. DATE: JUNE 15, 2007

m:\proj\3426\stage_2\structures\design\super\spbat002.dgn

1:00:57 PM

6/26/2007