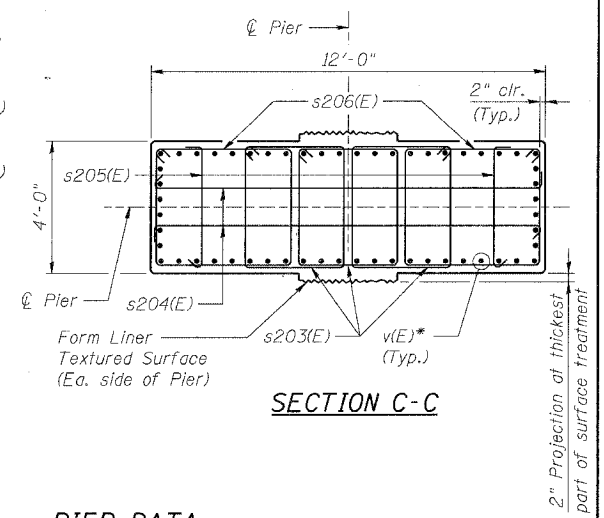
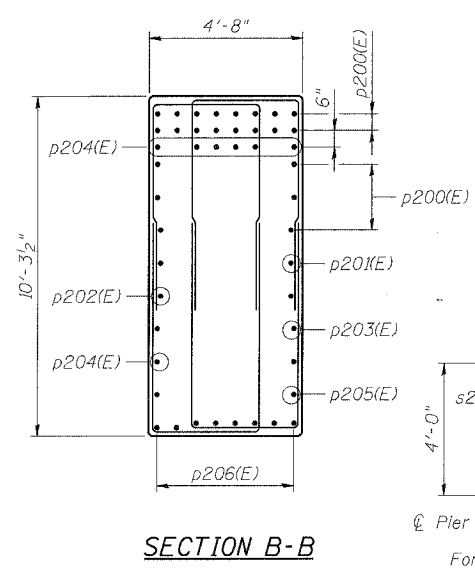
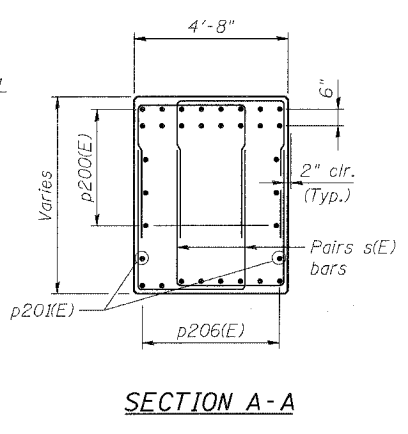
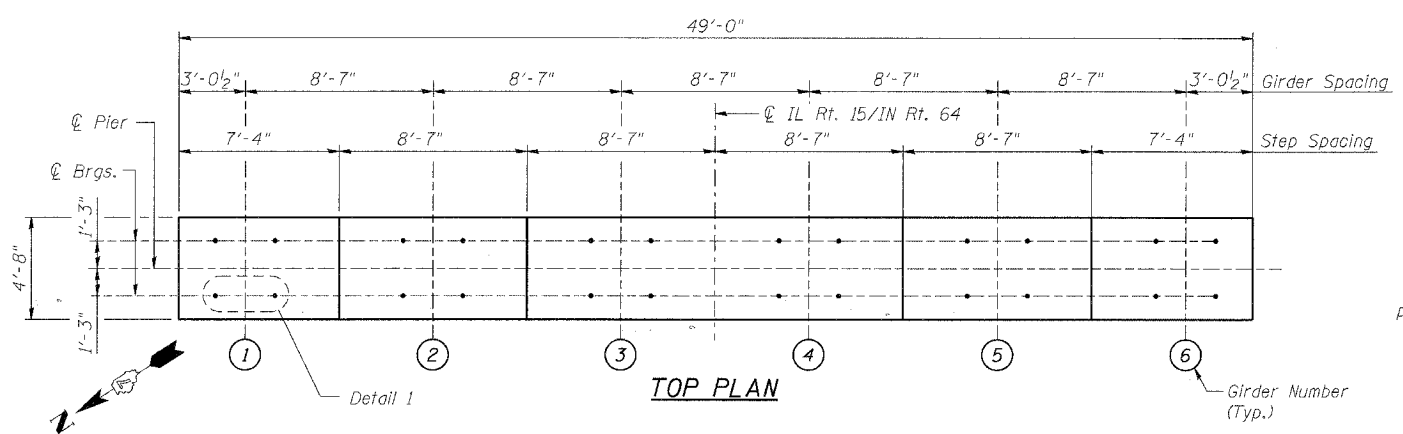


ROUTE No.	SECTION	COUNTY	TOTAL SHEETS	SHEET NO.
F.A.P. 827	12Z-3, 12BR	WABASH, IL GIBSON, IN	158	89
STA.		TO STA.		
F.H.W.A. REGION		ILLINOIS	PROJECT	

BRIDGE SHEET S73 OF S114 CONTRACT 94450

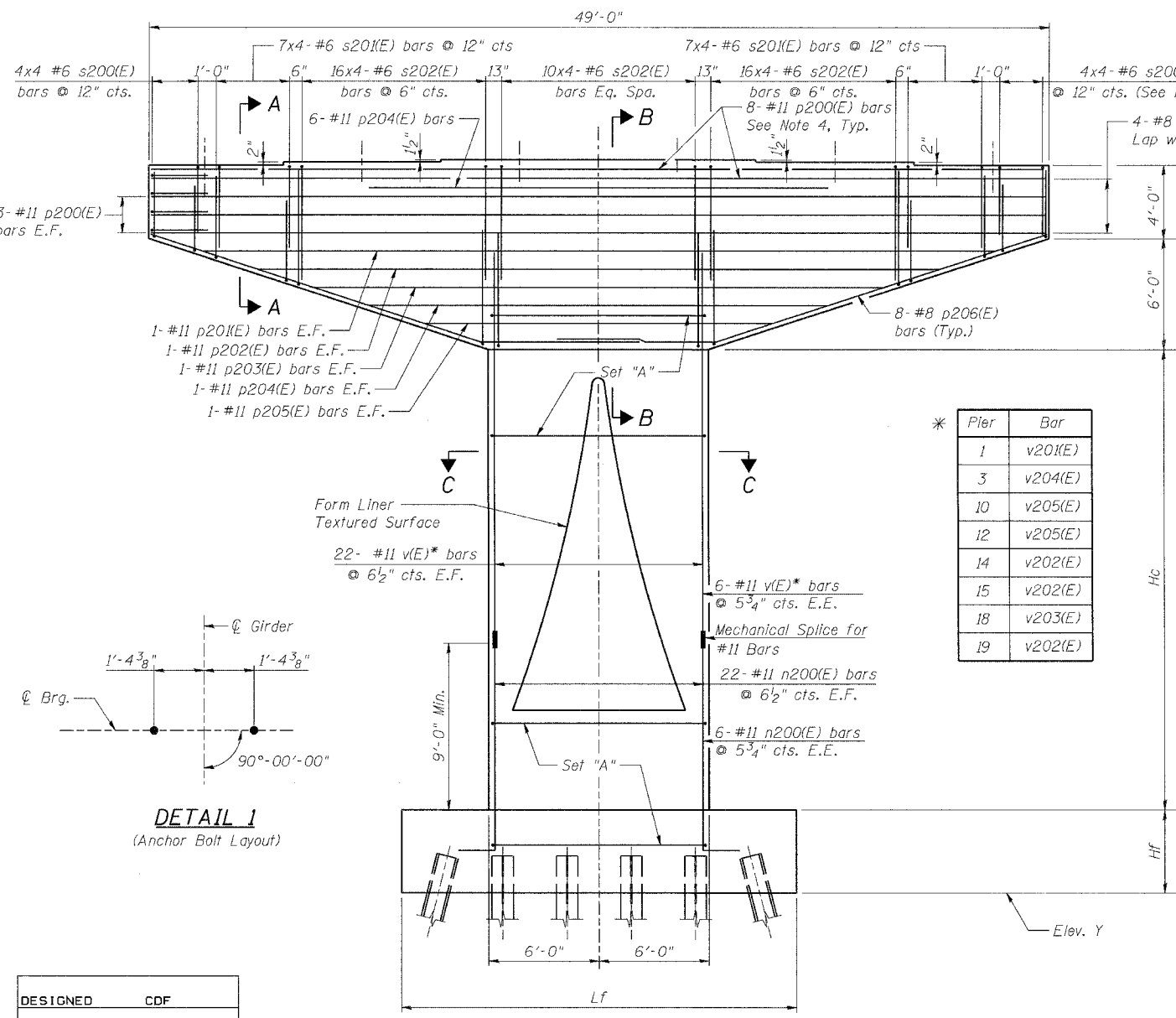


PIER DATA

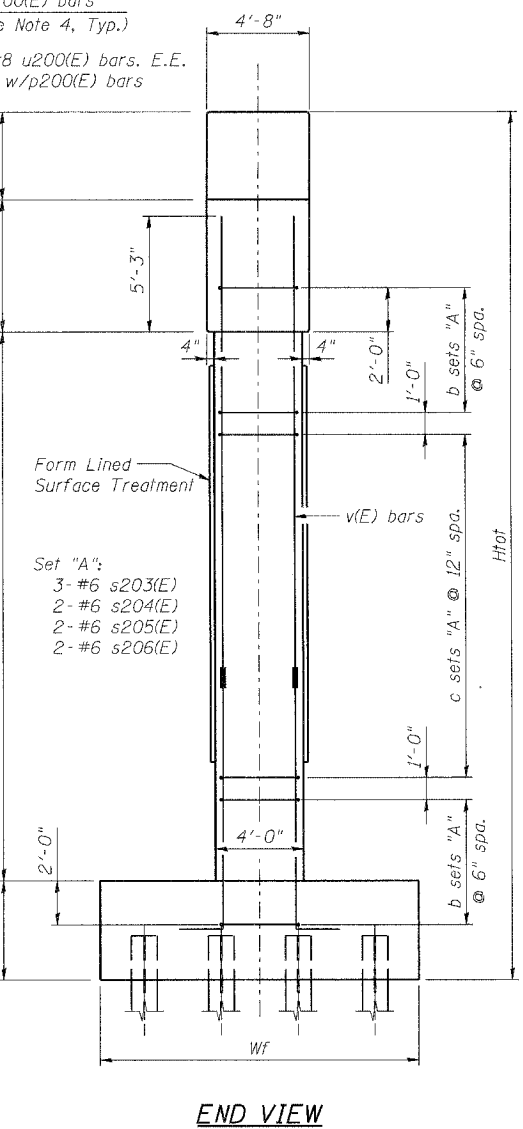
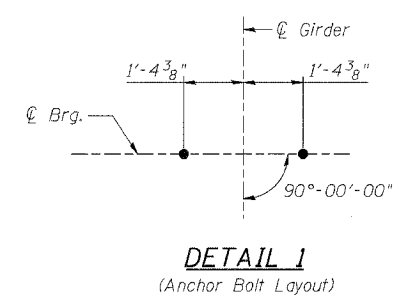
	Pier 1	Pier 3	Pier 10	Pier 12	Pier 14	Pier 15	Pier 18	Pier 19
Hf	4'-6"	4'-6"	4'-6"	4'-6"	4'-6"	4'-6"	4'-6"	4'-6"
Hc	11'-6 3/8"	22'-7 7/8"	25'-3"	24'-11 7/8"	14'-10 5/8"	14'-3 1/2"	18'-11 7/8"	13'-10 5/8"
Htot	26'-0 3/8"	37'-1 7/8"	39'-9"	38'-7 7/8"	29'-4 5/8"	28'-9 1/2"	33'-5 7/8"	28'-4 5/8"
Lf	21'-6"	21'-6"	21'-6"	21'-6"	21'-6"	21'-6"	21'-6"	21'-6"
Wf	14'-6"	14'-6"	14'-6"	14'-6"	14'-6"	14'-6"	14'-6"	14'-6"
Y	386.5	378.1	374.0	374.0	382.0	382.0	375.5	380.0
b	13	13	13	13	13	13	13	13
c	3	14	16	15	6	5	10	5

NOTES:

- Use the following minimum lap lengths except as noted:
#6: 2'-7" #8: 4'-6" #11: 9'-0"
- E.F. denotes Each Face.
E.E. denotes Each End.
- Pour steps monolithically with cap.
- Space reinforcement in cap to miss anchor bolts.
- All edges shall have standard 3/4" chamfers except as noted.
- Not used.
- For Footing details see sheets S76-S79.
- For Beam Seat Elevations and reinforcement bar bending details see sheet S80.
- For Bill of Materials see sheets S81-S85.
- For Form Liner details see sheet S80.



* Pier	Bar
1	v201(E)
3	v204(E)
10	v205(E)
12	v205(E)
14	v202(E)
15	v202(E)
18	v203(E)
19	v202(E)



END VIEW

DESIGNED	CDF
CHECKED	YS/HMA
DRAWN	VH/RMG
CHECKED	CDF

benesch

alfred benesch & company
Engineers - Surveyors - Planners
205 North Michigan Avenue, Suite 2400
Chicago, Illinois 60601
312-566-0450
Job No. 3426

ILLINOIS DEPARTMENT OF TRANSPORTATION
IL ROUTE 15/IN ROUTE 64
OVER WABASH RIVER PUBLIC WATERS
FAP 827 SECT 12Z-3, 12BR
PIERS 1, 3, 10, 12, 14, 15, 18, & 19
PIER DETAILS

SN: 093-0021 (IL)/9502700 (IN) STA. 1036+27
WABASH CO., IL. DATE: JUNE 15, 2007

m:\proj\3426\stage_2\structures\design\sub\spid\001.dgn 10:35 PM 6/26/2007