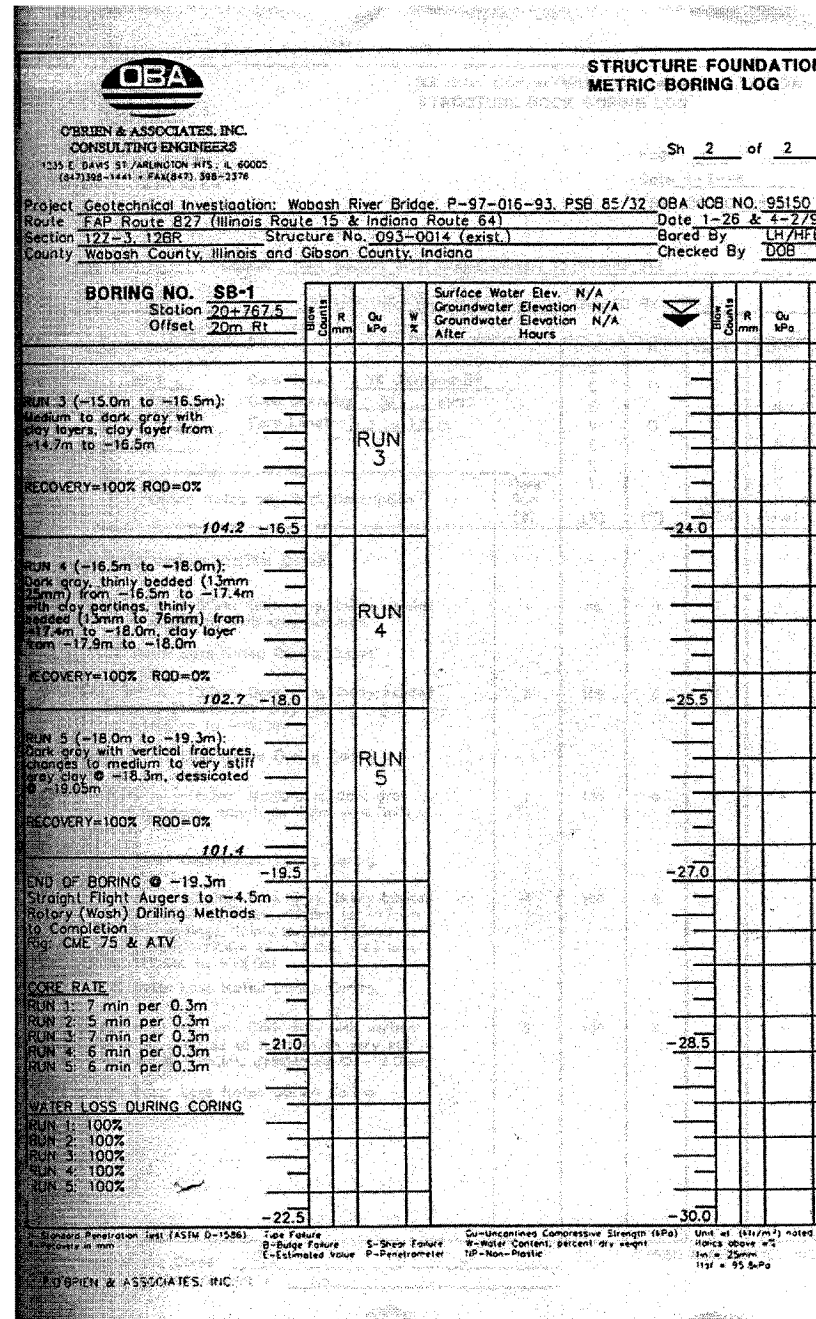
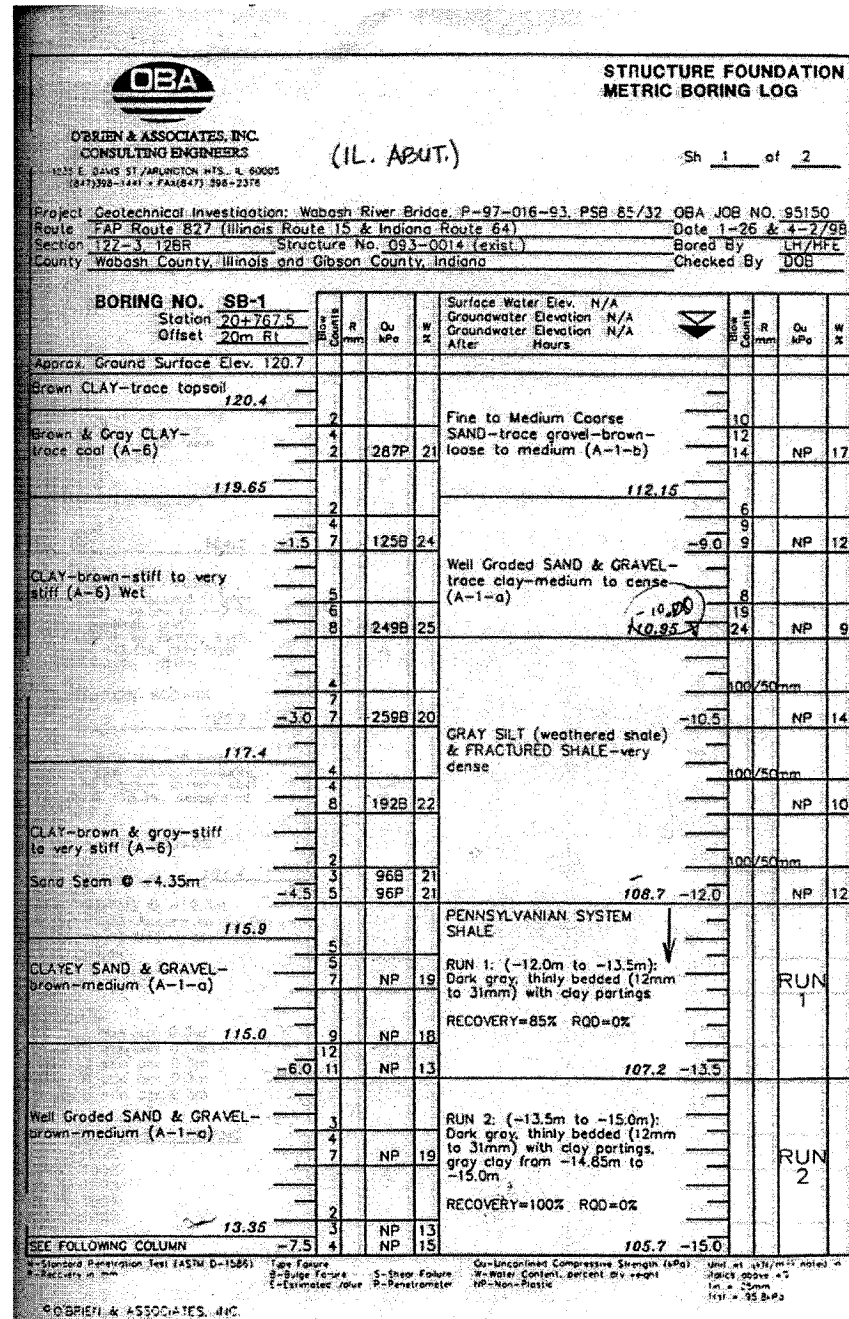


ROUTE No.	SECTION	COUNTY	TOTAL SHEETS	SHEET NO.
F.A.P. 827	12Z-3, 12BR	WABASH, IL GIBSON, IN	158	106
STA.		TO STA.		
F.H.W.A. REGION		ILLINOIS	PROJECT	

BRIDGE SHEET S90 OF S114 CONTRACT 94450



**ILLINOIS DEPARTMENT OF TRANSPORTATION STRUCTURE ROCK CORING LOG**  
Page 1 of 1  
Date 4-2-98  
OBA JOB NO. 95150

ROUTE FAP 827 DESCR. New Wabash River Bridge (Illinois 15/Indiana 64)  
SECT. 12Z-3, 12BR STRUCT. NO. 093-0014 (exist.) DRILLED BY HFE  
COUNTY Wabash, IL, & Gibson, IN.

Boring No. SB-1 Core Type NX Diamond Bit  
Station 20+767.5 Core Diameter 51 mm  
Offset 20m Rt Core Length 1.3 to 1.5 m  
Surface Elev. 120.7

Top Elev. (m)	Coring Notes and Rock Description	Core Run (#)	R (%)	R (%)	CORE (Min. / 7.3m)	COMP. (kPa)
108.7	PENNSYLVANIAN SYSTEM SHALE -12.0m to -13.5m: Dark gray, thinly bedded (12mm to 31mm) with clay partings 100% Water Loss Noted During Coring	1	85	0	7	-
107.2	-13.5m to -15.0m: Dark gray, thinly bedded (12mm to 31mm) with clay partings, gray clay from -14.85m to -15.0m 100% Water Loss Noted During Coring	2	100	0	5	-
105.7	-15.0m to -16.5m: Medium to dark gray with clay layers, clay layer from -14.7m to -16.5m 100% Water Loss Noted During Coring	3	100	0	7	-
104.2	-16.5m to -18.0m: Dark gray, thinly bedded (13mm to 25mm) from -16.5m to -17.4m with clay partings, thinly bedded (13mm to 76mm) from -17.4m to -18.0m, clay layer from -17.9m to -18.0m 100% Water Loss Noted During Coring	4	100	0	6	-
102.7	-18.0m to -19.3m: Dark gray with vertical fractures, changes to medium to very stiff gray clay @ -18.3m, dessicated @ -19.05m 100% Water Loss Noted During Coring	5	100	0	6	-

Color Pictures of the Cores Yes  
Cores Picked up by IDOT District 1 No

m:\proj\3426\stage\_2\structures\design\sub\ssbd1001.dgn

3:28:35 PM

9/19/2007

DESIGNED	CDF
CHECKED	ADD
DRAWN	CDF
CHECKED	ADD

**benesch**  
alfred benesch & company  
Engineers - Surveyors - Planners  
205 North Michigan Avenue, Suite 2400  
Chicago, Illinois 60601  
312-666-0450  
Job No. 9426

ILLINOIS DEPARTMENT OF TRANSPORTATION  
IL ROUTE 15/IN ROUTE 64  
OVER WABASH RIVER PUBLIC WATERS  
FAP 827 SECT 12Z-3, 12BR  
**SOIL BORING LOGS**  
SN: 093-0021 (IL)/9502700 (IN) STA. 1036+27  
WABASH CO., IL. DATE: JUNE 15, 2007