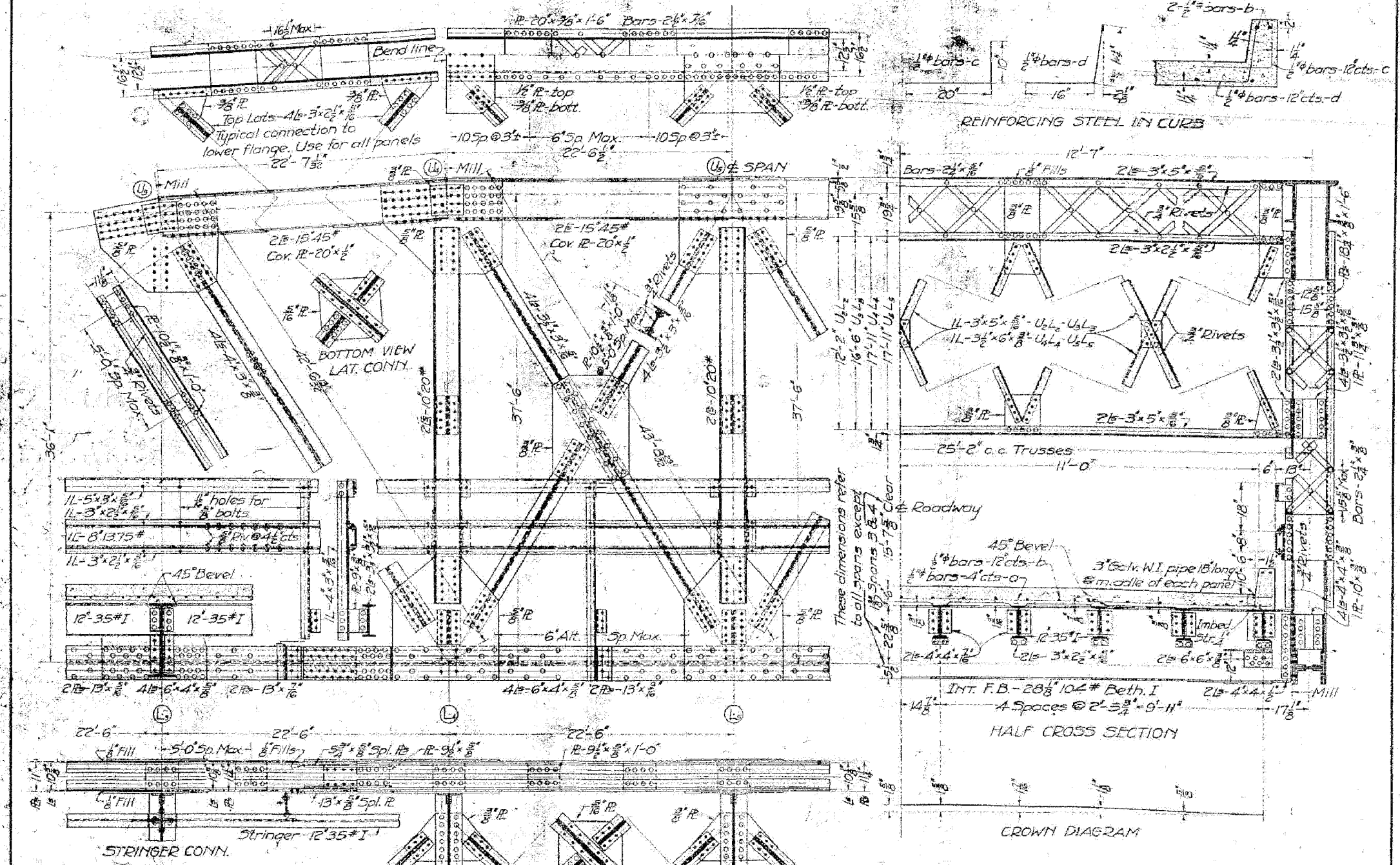


ROUTE No.	SECTION	COUNTY	TOTAL SHEETS	SHEET NO.
F.A.P. 827	12Z-3, 12BR	WABASH, IL GIBSON, IN	158	133
STA.		TO STA.		
F.H.W.A. REGION		ILLINOIS PROJECT		

STATE OF ILLINOIS
DEPARTMENT OF PUBLIC WORKS & BUILDINGS
DIVISION OF HIGHWAYS

SHEET NO. 3
12 SHEETS



COMPUTED	BY S. S. S.
CHECKED	BY J. H. H.
DRAWN	BY J. H. H.
CHECKED	BY J. H. H.
SPECIAL	ASSEMBLED
	CHECKED

EXAMINED Dec 20, 1929
APPROVED
FOR INFORMATION ONLY

Note - See sheet 4 for floor-beam connections and vertical clearances for spans 3 and 4. Other details of spans 3 and 4 are the same as shown on sheets 2 and 3 for all other spans.

TRUSS DETAILS
MOUNT CARMEL BRIDGE
OVER
WABASH RIVER
BETWEEN
ILLINOIS AND INDIANA