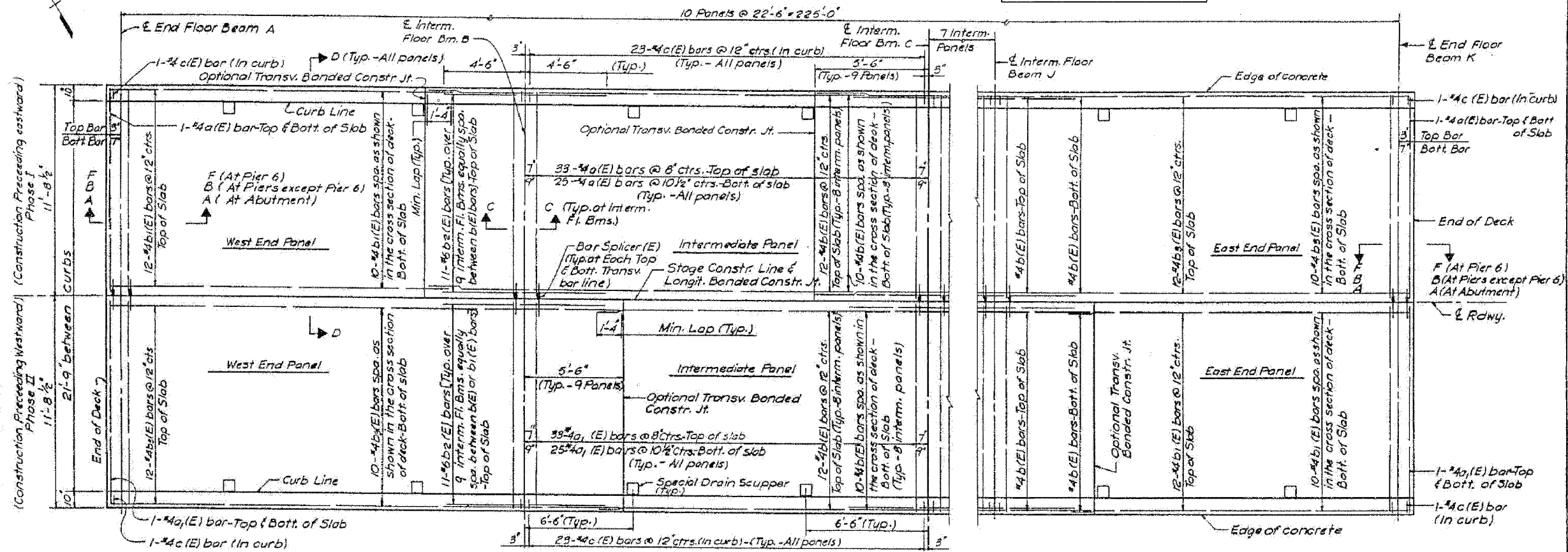


ROUTE No.	SECTION	COUNTY	TOTAL SHEETS	SHEET NO.
F.A.P. 827	12Z-3, 12BR	WABASH, IL GIBSON, IN	158	144
STA.	TO STA.			
F.H.W.A. REGION	ILLINOIS		PROJECT	

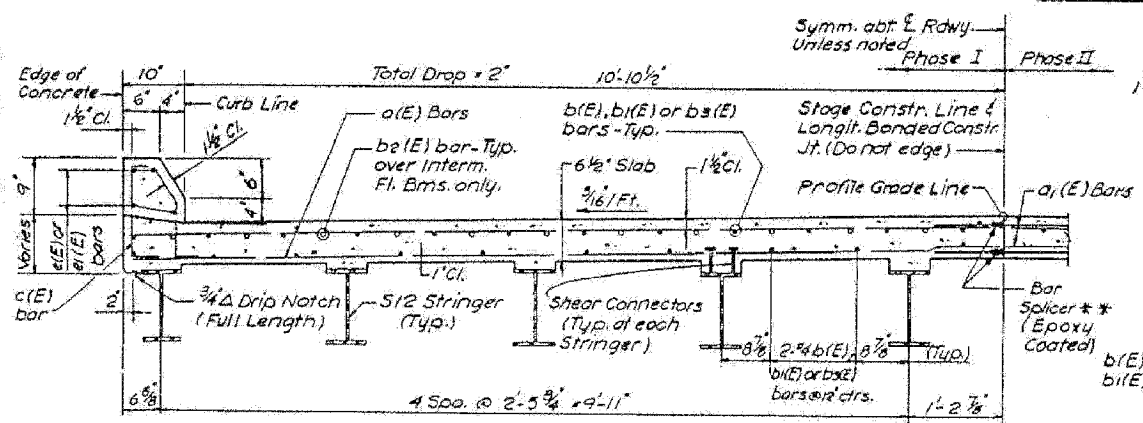
STATE OF ILLINOIS
DEPARTMENT OF TRANSPORTATION

FOR INFORMATION ONLY

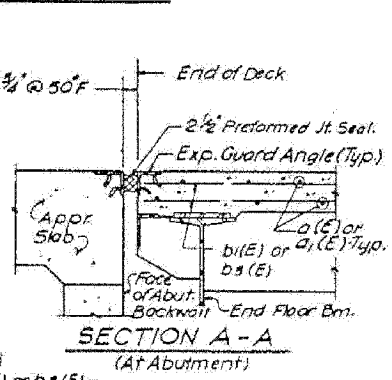
SHEET NO.	SECTION	QUANTITY	TOTAL SHEETS	SHEET NO.
14	12Z-3, 12BR	WABASH	31	13
SHEET NO. 7 SHEETS 25				



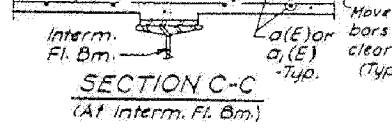
PLAN (Typ. - All Spans)



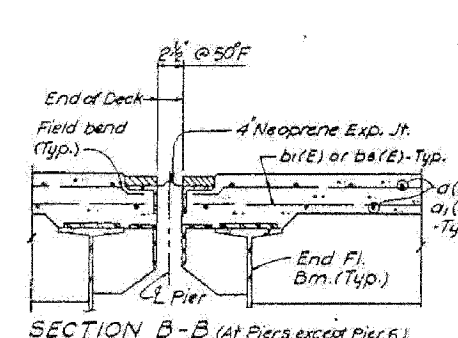
HALF DECK CROSS SECTION D-D



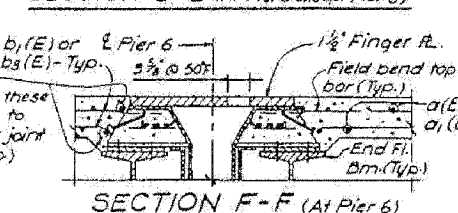
SECTION A-A (At Abutment)



SECTION C-C (At Interm. Fl. Bm.)



SECTION B-B (At Piers except Pier 6)



SECTION F-F (At Pier 6)

- NOTES:**
- Reinforcement bars designated (E) shall be epoxy coated.
 - All exposed edges of concrete to have 3/4" chamfer.
 - See Sht. 14 for special Drain Scupper Details.
 - See Sht. 15 for Bar Splicer Details.
 - See Sht. 18 for Neoprene Exp. Jt. Details.
 - See Sht. 20 for 2 1/2" Preformed Jt. Seal Details.
 - Concrete deck inserts are required for anchorage of Temporary Bridge Railing & Temporary Crossover Bridging. For details, see Sheet 5.

Work Sheets 13 & 14 together
DECK REINFORCEMENT
FA ROUTE 827 (IL 15) SECTION (HBI42) BR
WABASH COUNTY

HAZLET & ERDAL
CONSULTING ENGINEERS
FILE NO.
DRAWN BY HKN/EJL
CHECKED BY GJV
APPROVED BY JH

** Lapped bars at this location shall be tied with double the number of ties normally used.