

ROUTE No.	SECTION	COUNTY	TOTAL SHEETS	SHEET NO.
F.A.P. 827	12Z-3, 12BR	WABASH, IL GIBSON, IN	158	148
STA.		TO STA.		
F.H.W.A. REGION		ILLINOIS PROJECT		

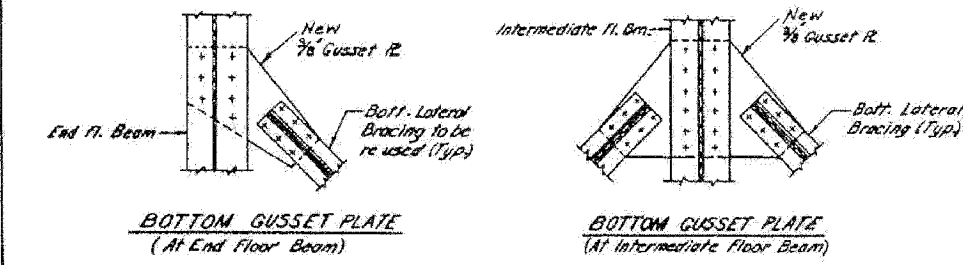
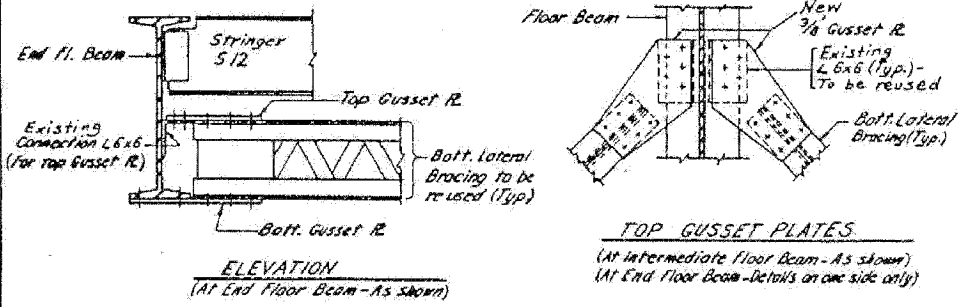
ROUTE NO.	SECTION	COUNTY	TOTAL SHEETS	SHEET NO.
F.A.P. 827	12Z-3, 12BR	WABASH, IL GIBSON, IN	158	148

STATE OF ILLINOIS
DEPARTMENT OF TRANSPORTATION

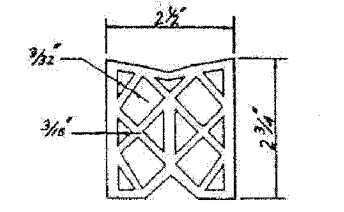
TABLE OF BOTTOM LATERAL BRACING-GUSSET PLATE REPLACEMENT

Span	Panel/Location (Direction)	Gusset Pl.
1	DE/SE	Top
2	AB/SH	Bottom
	AB/NW	Bottom
	CD/NW	Bottom
	CD/SE	Bottom
	H/NN	Bottom
3	JK/SW	Top
	JK/NE	Bottom
4	JK/SE	Top & Bottom
5	AB/SH	Top
	AB/SE	Top
6	AB/SH	Top
	AB/SW	Top & Bottom
	JK/NE	Top
7	JK/SE	Top & Bottom
	JK/NE	Top
8	CD/SE	Bottom
9	AB/SH	Top
	AB/SW	Top
10	AB/NE	Bottom
11	AB/SH	Top & Bottom
	JK/NE	Top & Bottom
	JK/SE	Top & Bottom
12	AB/SH	Top & Bottom
	AB/SW	Top & Bottom

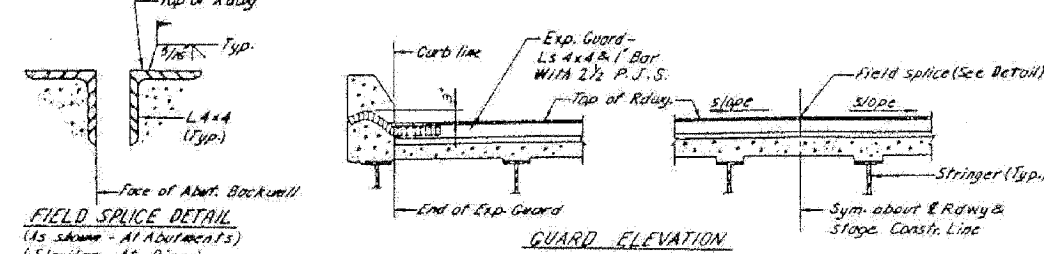
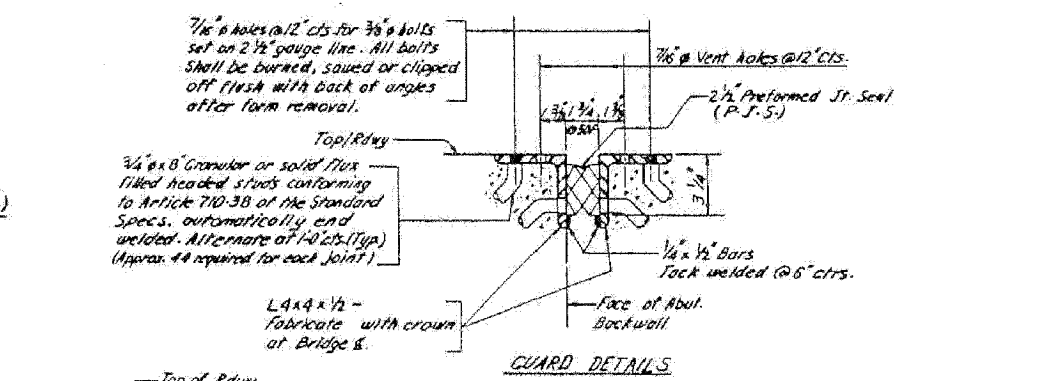
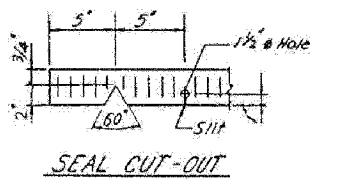
For Panel/Location (Direction), see Sheet 9.



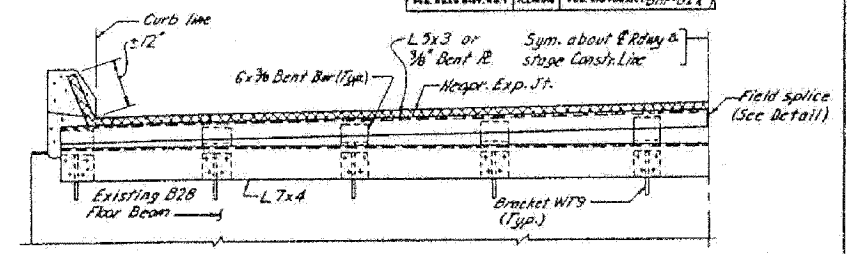
BOTTOM LATERAL BRACING-GUSSET PLATE DETAILS
(New replacement gusset plates to match existing plates in shape, size and hole location. See Table of Gusset Plate Replacement.)



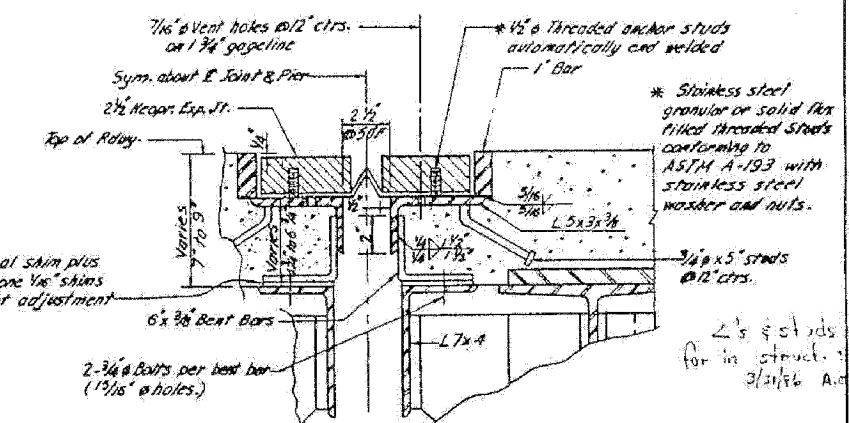
SEAL CUT-OUT



EXPANSION GUARD AT ABUTMENTS



EXPANSION JOINT DETAILS AT PIERS 1-11 EXCEPT 6



WELDING PROCEDURE FOR FLOOR BEAM COVER PLATES ON TRUSSES
(SEE SPECIAL PROVISIONS FOR ADDITIONAL ROAD CLOSURE RESTRICTIONS)

1. PREPARE SURFACES.
2. CLAMP BOTTOM COVER PLATE IN POSITION AND PREHEAT COVER PLATE AND FLOOR BEAM TO 150°F.
3. STOP ALL TRAFFIC.
4. USING TWO WELDERS, ONE ON EACH SIDE OF BEAM, WORK FROM CENTER OF BEAM TOWARDS ENDS, WELDING 3/16" FILLET WELD 3" LONG ON 2-3/4" CENTER.
5. ALLOW WELDS TO COOL FOR ONE MINUTE AFTER SURFACE IS BLACK.
6. OPEN DECK TO TRAFFIC TO ALLOW ALL ACCUMULATED TRAFFIC TO CLEAR.
7. STOP ALL TRAFFIC.
8. STARTING FROM CENTER AND USING A WELDER ON EACH SIDE, THE 2'-0" GAPS BETWEEN THE 3" WELDS SHALL BE FILLED IN USING THE BLOCK OR STEP SHIP SYSTEM. ALLOW EACH BLOCK TO COOL THOROUGHLY BEFORE MAKING ADJACENT WELDS. THE ORIGINAL 3" WELDS SHALL BE CHIPPED PRIOR TO MAKING EACH 2'-3" WELD PASS. WELD ENDS OF PLATE. AFTER EACH WELD HAS COOLED, ALLOW ACCUMULATED TRAFFIC TO CLEAR.
9. HALVES OF A TOP COVER PLATE MAY BE WELDED USING THE SAME PROCEDURE OUTLINED ABOVE. THE SECOND HALF SHALL BE 'VEE' WELDED TO THE FIRST PLATE AT THE CENTERLINE OF THE BEAM BEFORE THE 3" LONGITUDINAL WELDS ARE MADE. FINALLY, WELD THE ENDS OF THE PLATE.

NOTE: IF MAXIMUM ROAD CLOSURE LIMIT OF 30 MINUTES IS REACHED, WELDING SHALL BE STOPPED AND WELDS ALLOWED TO COOL. ACCUMULATED TRAFFIC SHALL THEN BE ALLOWED TO CLEAR BEFORE RESUMING WELDING. COVER PLATE CLAMPS ARE TO REMAIN IN PLACE WHILE TRAFFIC IS ALLOWED TO CLEAR.

HAZLET & BRDAL
CONSULTING ENGINEERS
FILE NO.
DRAWN BY S.E.H.P.
CHECKED BY G.W.
APPROVED BY J.P.

FOR INFORMATION ONLY

Work sheets 19-21 together.
STRUCTURAL STEEL DETAILS
FA ROUTE 827 (IL) SECTION (WB142) BR
WABASH COUNTY