

F.A.P. RTE.	SECTION	COUNTY	TOTAL SHEETS	SHEET NO.
327	(51-23)B-3	LAWRENCE	56	1

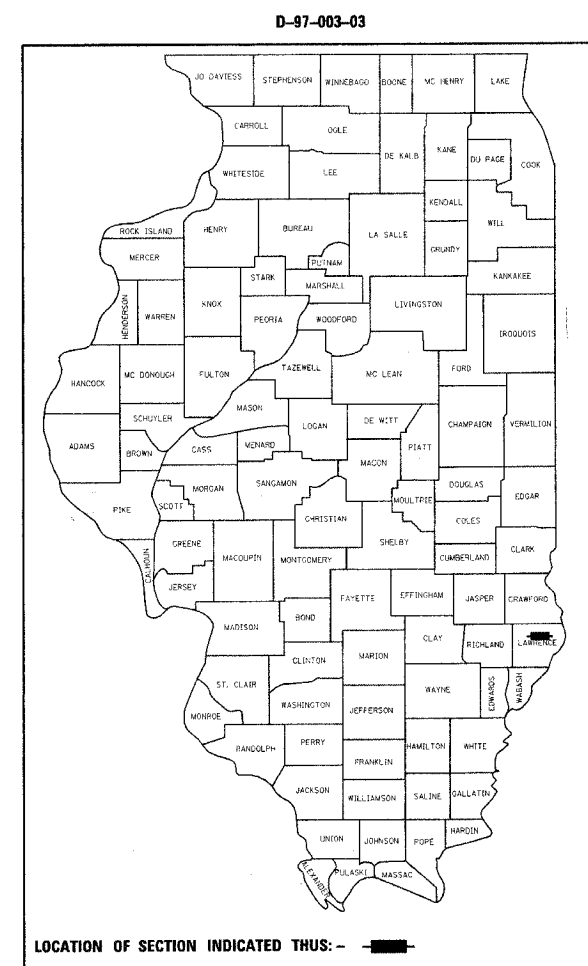
STATE OF ILLINOIS
DEPARTMENT OF TRANSPORTATION
DIVISION OF HIGHWAYS

**PROPOSED
HIGHWAY PLANS**

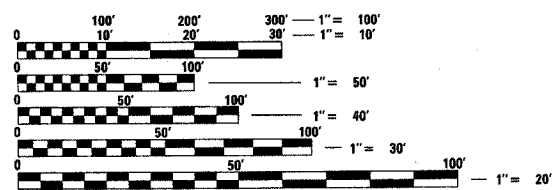
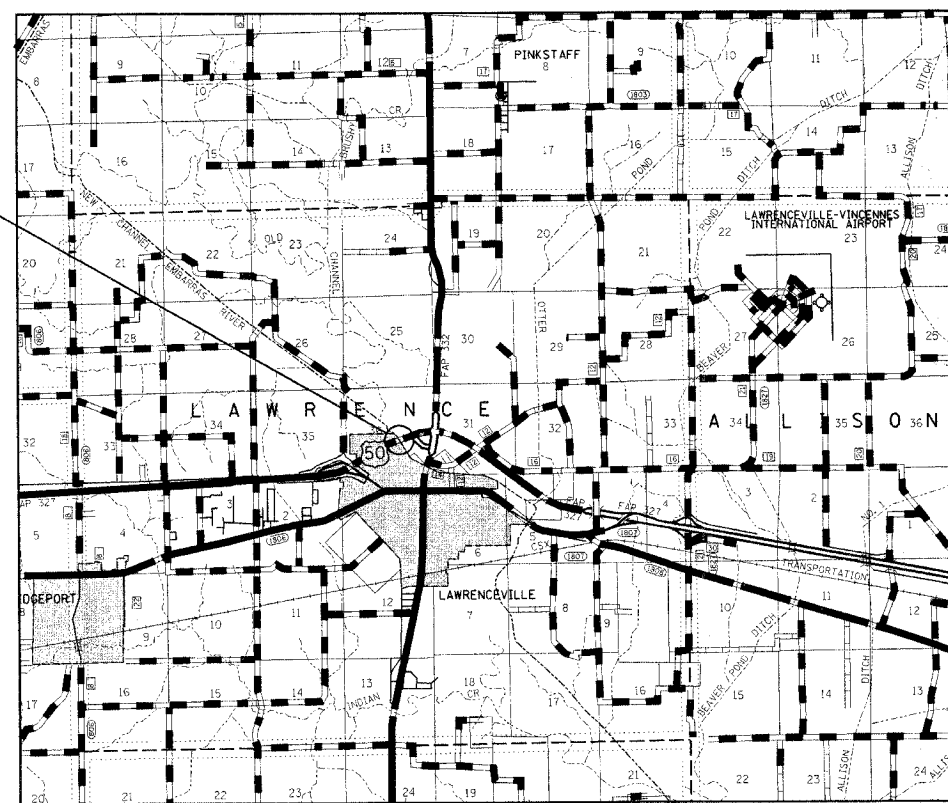
FAP ROUTE 327 (US 50)
SECTION (51-23)B-3
PROJECT: *ACBRF-0327(040)*
LAWRENCE COUNTY
BRIDGE REPLACEMENT

C-97-007-03

FOR INDEX OF SHEETS, SEE SHEET NO.



STRUCTURE NO. 051-0063



FULL SIZE PLANS HAVE BEEN PREPARED USING STANDARD ENGINEERING SCALES. REDUCED SIZED PLANS WILL NOT CONFORM TO STANDARD SCALES. IN MAKING MEASUREMENTS ON REDUCED PLANS, THE ABOVE SCALES MAY BE USED.

J.U.L.I.E.
JOINT UTILITY LOCATION INFORMATION FOR EXCAVATION
1-800-892-0123

CONTRACT NO. 94967 2005 ADT = 4000

GROSS LENGTH = 1671 FEET = 0.316 MILES
NET LENGTH = 1671 FEET = 0.316 MILES

STATE OF ILLINOIS
DEPARTMENT OF TRANSPORTATION
DIVISION OF HIGHWAYS

SUBMITTED August 17, 2007
Christian M. Keeler
DEPUTY DIRECTOR OF HIGHWAYS, REGION ENGINEER

October 12, 2007
Eric E. Harsh
ENGINEER OF DESIGN AND ENVIRONMENT

October 12, 2007
Milton R. Sess, P.E.
DIRECTOR OF HIGHWAYS, CHIEF ENGINEER

**PRINTED BY THE AUTHORITY
OF THE STATE OF ILLINOIS**