

STATE OF ILLINOIS
DEPARTMENT OF TRANSPORTATION

ROUTE NO.	SECTION	COUNTY	TOTAL SHEETS	SHEET NO.
FAP 327	(51-23) B-3	LAWRENCE	56	26
FED. ROAD DIST. NO. 7	ILLINOIS	FED. AID PROJECT-		

Contract No. 94967

SHEET NO. 9
29 SHEETS

NORTH CURB LINE

Location	Station	Offset	Theoretical Grade Elevations
END W. APPR. PAV'T	55135.96	-20.00	438.73
A	55145.92	-20.00	438.81
B	55155.88	-20.00	438.89
BK. W. ABUT.	55165.33	-20.00	438.97

NORTH EDGE OF PAVEMENT

Location	Station	Offset	Theoretical Grade Elevations
END W. APPR. PAV'T	55137.21	-12.00	438.62
A	55147.18	-12.00	438.70
B	55157.16	-12.00	438.78
BK. W. ABUT.	55166.62	-12.00	438.86

STAGE CONSTRUCTION JOINT

Location	Station	Offset	Theoretical Grade Elevations
END W. APPR. PAV'T	55138.81	-1.75	438.48
A	55148.80	-1.75	438.56
B	55158.80	-1.75	438.64
BK. W. ABUT.	55168.29	-1.75	438.72

℄ ROADWAY & P.G.

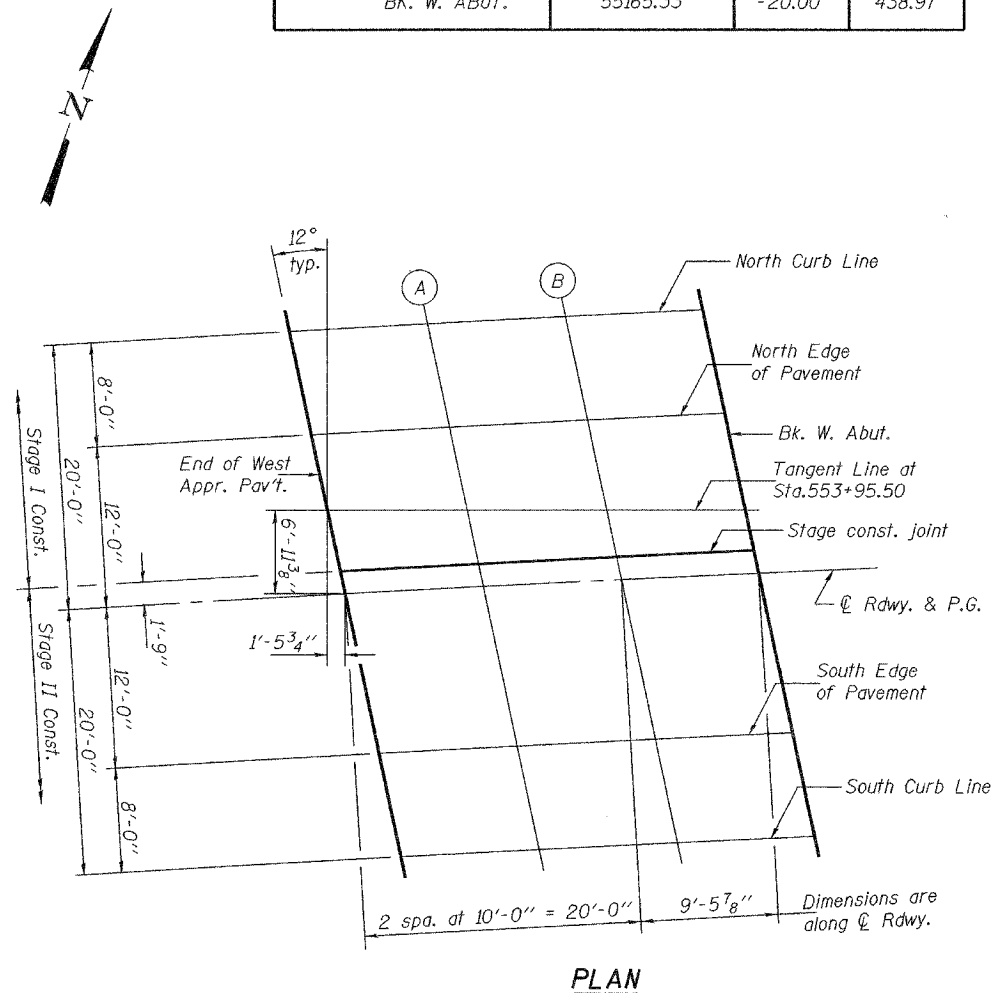
Location	Station	Offset	Theoretical Grade Elevations
END W. APPR. PAV'T	55139.08	0.00	438.46
A	55149.08	0.00	438.54
B	55159.08	0.00	438.62
BK. W. ABUT.	55168.57	0.00	438.69

SOUTH EDGE OF PAVEMENT

Location	Station	Offset	Theoretical Grade Elevations
END W. APPR. PAV'T	55140.96	12.00	438.29
A	55150.99	12.00	438.37
B	55161.01	12.00	438.45
BK. W. ABUT.	55170.53	12.00	438.53

SOUTH CURB LINE

Location	Station	Offset	Theoretical Grade Elevations
END W. APPR. PAV'T	55142.22	20.00	438.18
A	55152.27	20.00	438.26
B	55162.31	20.00	438.34
BK. W. ABUT.	55171.85	20.00	438.42



PLAN

Notes: All skew lines are 12° right forward relative to the local tangent.

DESIGNED	Chad E. Hodel
CHECKED	Mark D. Shaffer
DRAWN	h.t. duong
CHECKED	CEH/MDS

EXAMINED	Thomas J. Domagala ENGINEER OF BRIDGES
PASSED	Ralph E. Anderson ENGINEER OF BRIDGES AND STRUCTURES

Oct. 2, 2007

TOP OF WEST APPROACH
PAVEMENT ELEVATIONS
F.A.P. RT. 327 - SEC. (51-23)B-3
LAWRENCE COUNTY
STATION 553+95.50
STRUCTURE NO. 051-0063