

STATE OF ILLINOIS  
DEPARTMENT OF TRANSPORTATION

ROUTE NO.	SECTION	COUNTY	SHEET NO.	SHEET NO.
FAP 327	(51-23) B-3	LAWRENCE	56	27
FED. ROAD DIST. NO. 7	BLINDS	FED. AID PROJECT		

SHEET NO. 10  
29 SHEETS

Contract No. 94967

NORTH CURB LINE

Location	Station	Offset	Theoretical Grade Elevations
BK. E. ABUT.	55619.52	-20.00	439.02
A	55629.48	-20.00	438.94
B	55639.44	-20.00	438.86
END E. APPR. PAV'T	55648.87	-20.00	438.78

NORTH EDGE OF PAVEMENT

Location	Station	Offset	Theoretical Grade Elevations
BK. E. ABUT.	55621.62	-12.00	438.88
A	55631.59	-12.00	438.80
B	55641.57	-12.00	438.72
END E. APPR. PAV'T	55651.02	-12.00	438.64

STAGE CONSTRUCTION JOINT

Location	Station	Offset	Theoretical Grade Elevations
BK. E. ABUT.	55624.31	-1.75	438.71
A	55634.31	-1.75	438.63
B	55644.31	-1.75	438.54
END E. APPR. PAV'T	55653.78	-1.75	438.47

℄ ROADWAY & P.G.

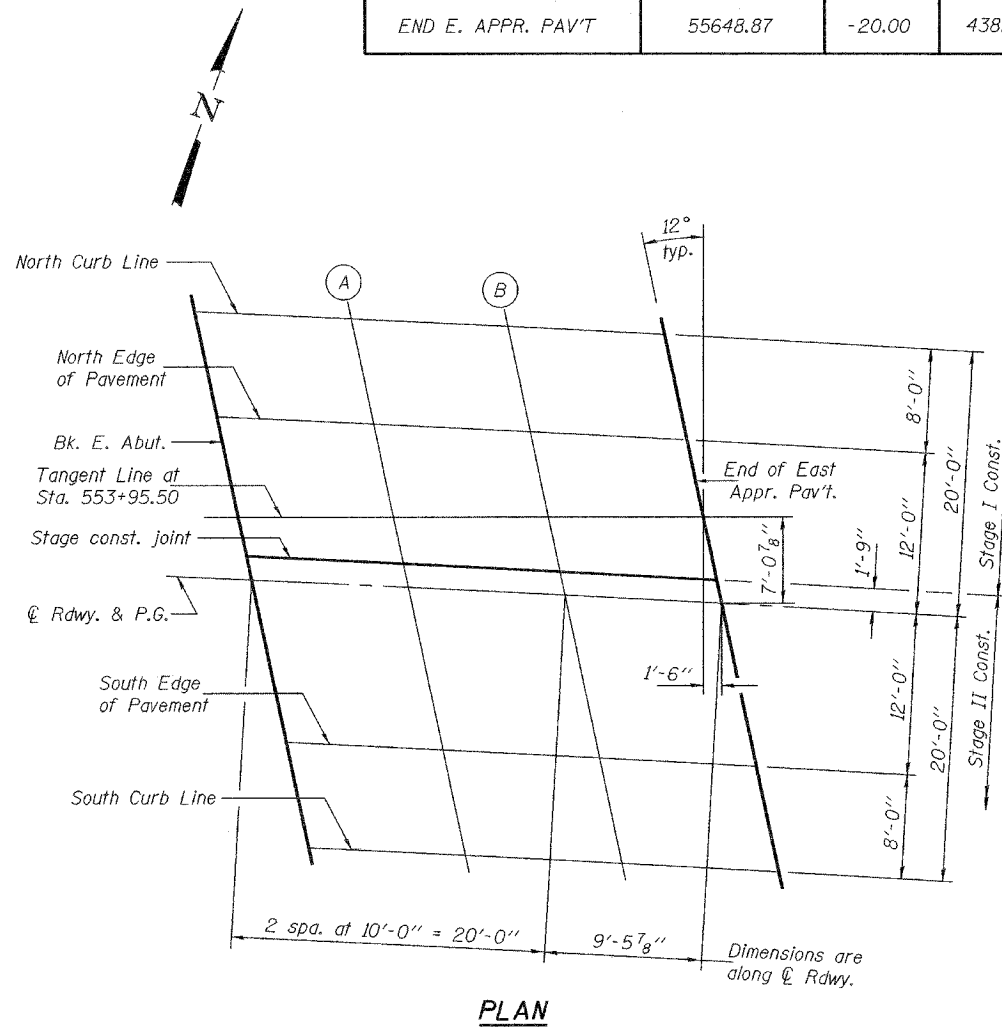
Location	Station	Offset	Theoretical Grade Elevations
BK. E. ABUT.	55624.77	0.00	438.68
A	55634.77	0.00	438.60
B	55644.77	0.00	438.51
END E. APPR. PAV'T	55654.26	0.00	438.44

SOUTH EDGE OF PAVEMENT

Location	Station	Offset	Theoretical Grade Elevations
BK. E. ABUT.	55627.95	12.00	438.47
A	55637.97	12.00	438.39
B	55648.00	12.00	438.31
END E. APPR. PAV'T	55657.51	12.00	438.23

SOUTH CURB LINE

Location	Station	Offset	Theoretical Grade Elevations
BK. E. ABUT.	55630.07	20.00	438.33
A	55640.12	20.00	438.25
B	55650.16	20.00	438.17
END E. APPR. PAV'T	55659.69	20.00	438.09



Notes: All skew lines are 12° right forward relative to the local tangent.

DESIGNED	Chad E. Hodel
CHECKED	Mark D. Shaffer
DRAWN	h.t. duong
CHECKED	CEH/MDS

Oct. 2, 2007  
 EXAMINED *Thomas Damagala*  
 ENGINEER OF BRIDGES AND STRUCTURES  
 PASSED *Ralph E. Anderson*  
 ENGINEER OF BRIDGES AND STRUCTURES

TOP OF EAST APPROACH  
 PAVEMENT ELEVATIONS  
 F.A.P. RT. 327 - SEC. (51-23)B-3  
 LAWRENCE COUNTY  
 STATION 553+95.50  
 STRUCTURE NO. 051-0063