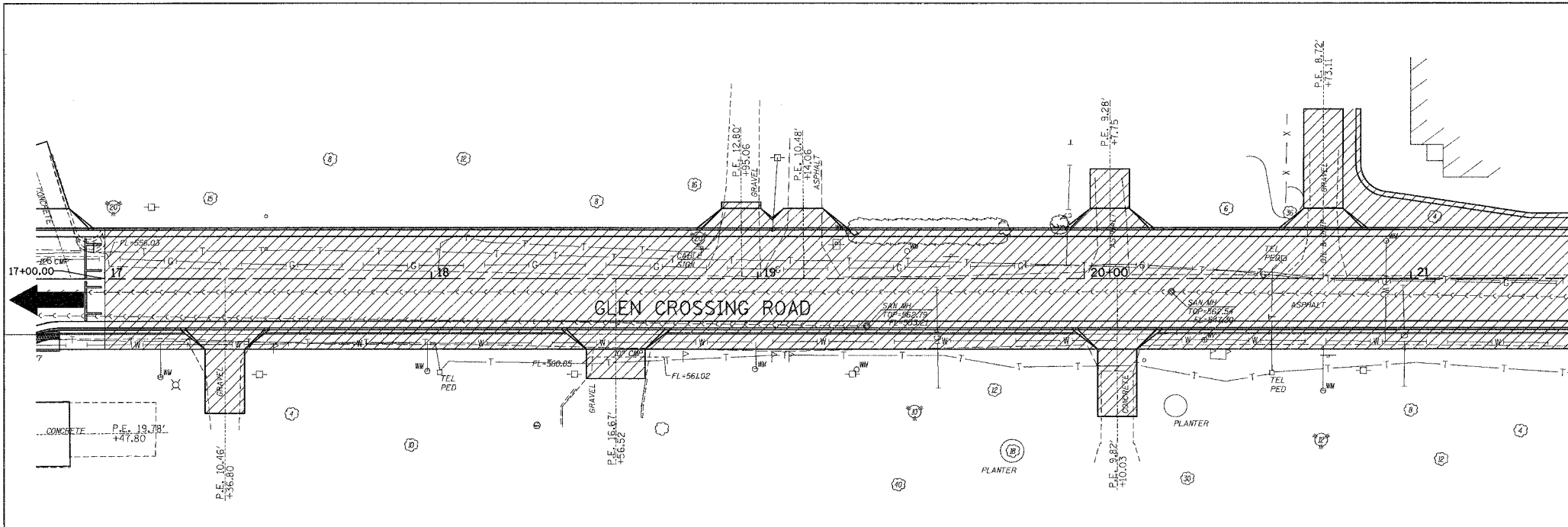


F.A. RTE.	SECTION	COUNTY	TOTAL SHEETS	SHEET NO.
8899	03-00026-00-RP	MADISON	107	33
FED. ROAD DIST. NO.	ILLINOIS	FED. AID PROJECT		

CONTRACT NO. 97295

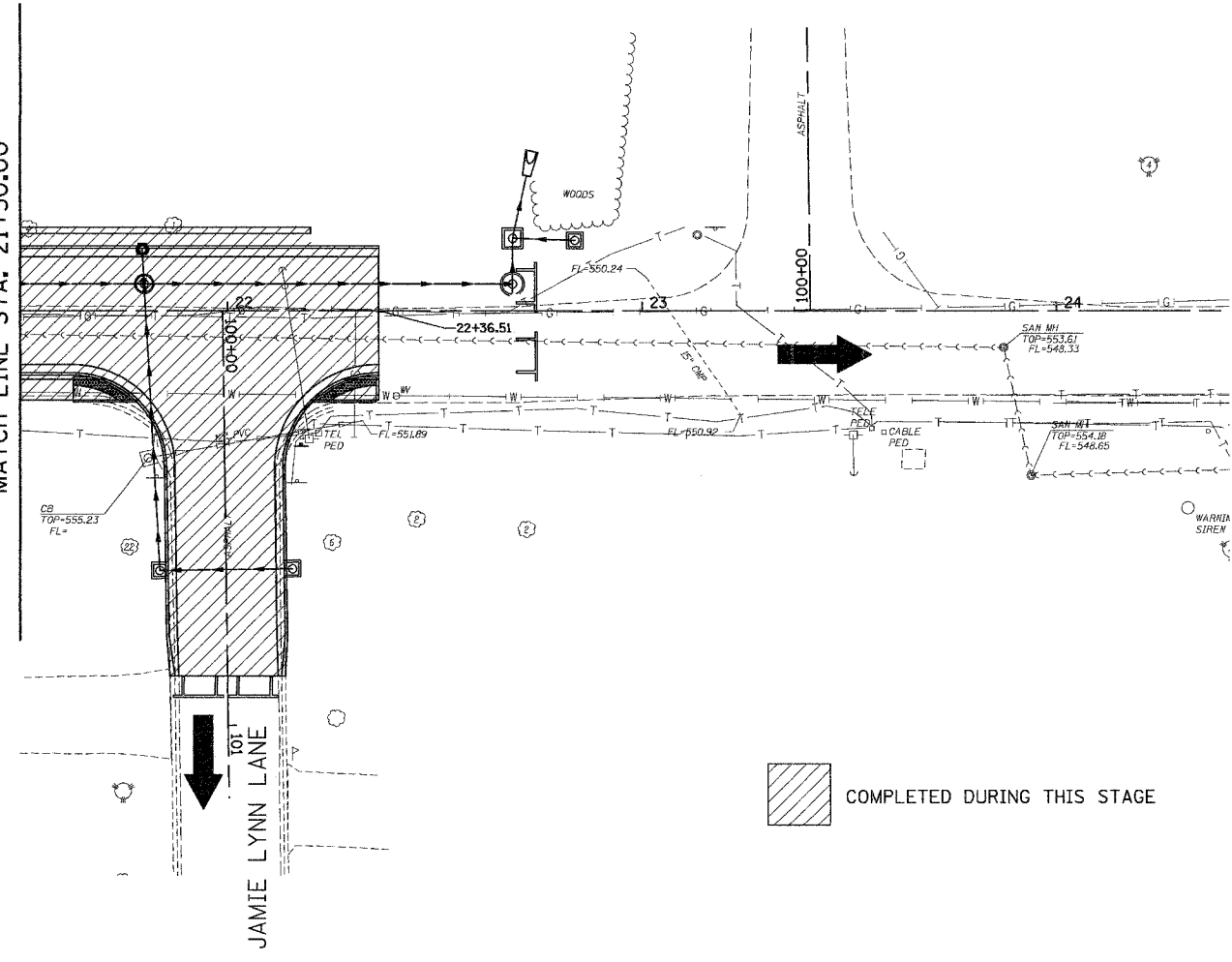
BY	DATE
FINAL SURVEY PLOTTED	
NOTE BOOK TEMPLATE	
AREAS CHECKED	
NO.	

BY	DATE
ORIGINAL SURVEY PLOTTED	
NOTE BOOK TEMPLATE	
AREAS CHECKED	
NO.	

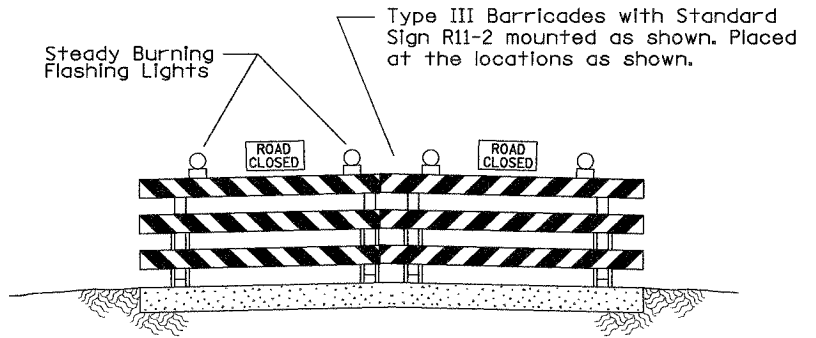


MATCH LINE STA. 21+50.00

MATCH LINE STA. 21+50.00



COMPLETED DURING THIS STAGE



Juneau Associates, Inc. P.C.
CONSULTING ENGINEERS AND LAND SURVEYORS
1000 State Street, P.O. Box 1125
Springfield, Illinois 62702
Phone: (618) 887-1400 / (618) 452-9571
Fax: (618) 452-2941

STAGE 3 CONSTRUCTION
F.A.U. ROUTE 8899
GLEN CROSSING ROAD
GLEN CARBON, ILLINOIS
SECTION No. 03-00026-00-RP

REVISIONS			
NO.	DATE	BY	REMARKS

SCALE: 1 Inch = 20 feet			
DSN. BY: BFK	DATE: 12/13/06	SHEET	
DWN. BY: DAN	DATE: 12/13/06	33	
CHK'D: BFK	DATE: 12/13/06		
JOB NO. 040630	DGN. NAME: STG03NTS	OF 107 SHTS	