

F.A. RTE.	SECTION	COUNTY	TOTAL SHEETS	SHEET NO.
8899 03-00026-00-RP		MADISON	107	36
FED. ROAD DIST. NO.	ILLINOIS	FED. AID PROJECT		

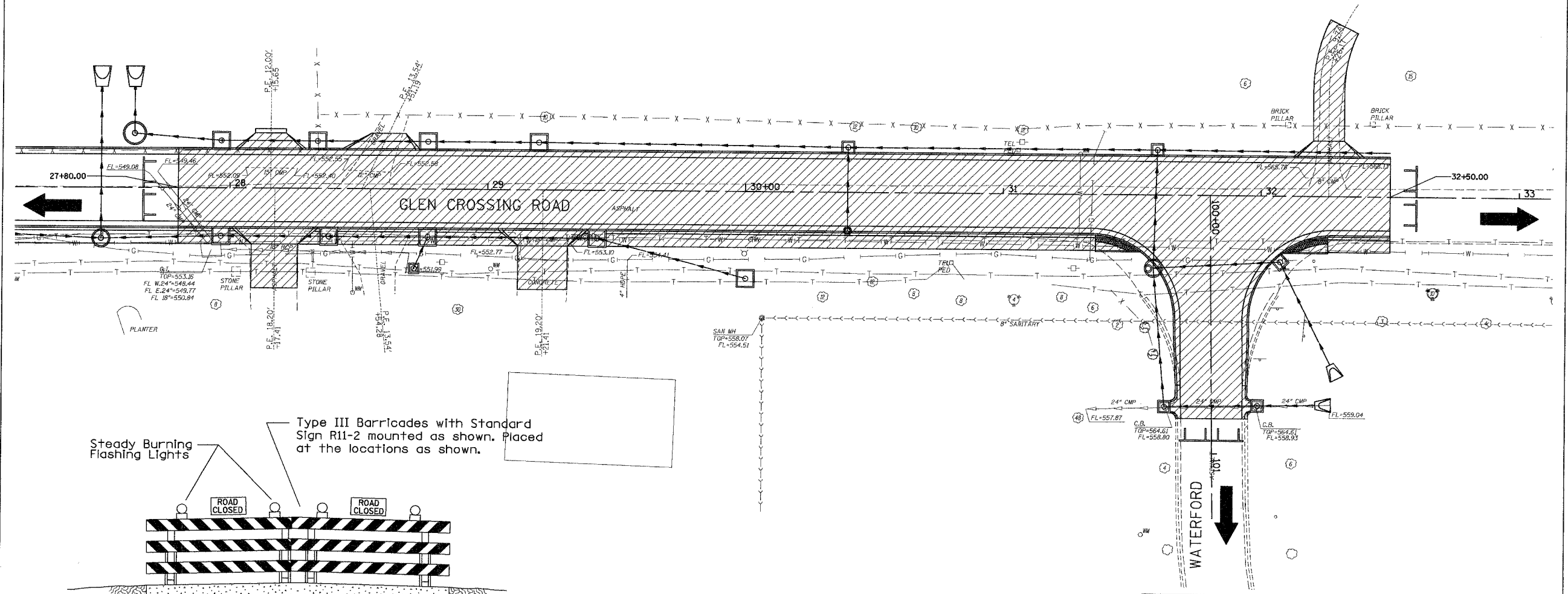
CONTRACT NO. 97295



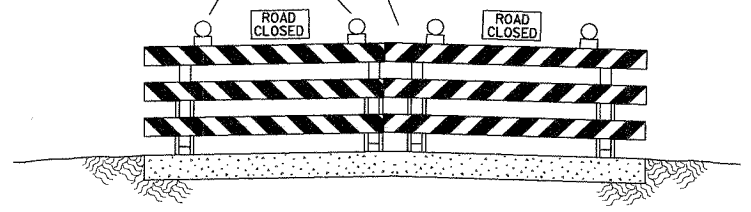
COMPLETED DURING THIS STAGE

FINAL SURVEY PLOTTED	BY	DATE
NOTE BOOK TEMPLATE		
AREAS CHECKED		
NO.		

ORIGINAL SURVEY PLOTTED	BY	DATE
NOTE BOOK TEMPLATE		
AREAS CHECKED		
NO.		



Steady Burning Flashing Lights  
Type III Barricades with Standard Sign R11-2 mounted as shown. Placed at the locations as shown.



<b>Juneau Associates, Inc. P.C.</b> CONSULTING ENGINEERS AND LAND SURVEYORS 2100 North Lincoln, P.O. Box 1320 Granite City, Illinois 62040 Phone (618) 877-4001/4001-4002-4003 Fax (618) 402-0041		<b>STAGE 6 CONSTRUCTION</b> F.A.U. ROUTE 8899 GLEN CROSSING ROAD GLEN CARBON, ILLINOIS SECTION No. 03-00026-00-RP	
SCALE: 1 inch = 20 feet		SHEET 36	
<b>REVISIONS</b>		DSN. BY: BFK    DATE: 12/13/06	
NO.    DATE    BY    REMARKS		DWN. BY: DAN    DATE: 12/13/06	
CHKD: BFK    DATE: 12/13/06		JOB NO. 040630    DGN. NAME: STECONTS    OF 107 SHTS	