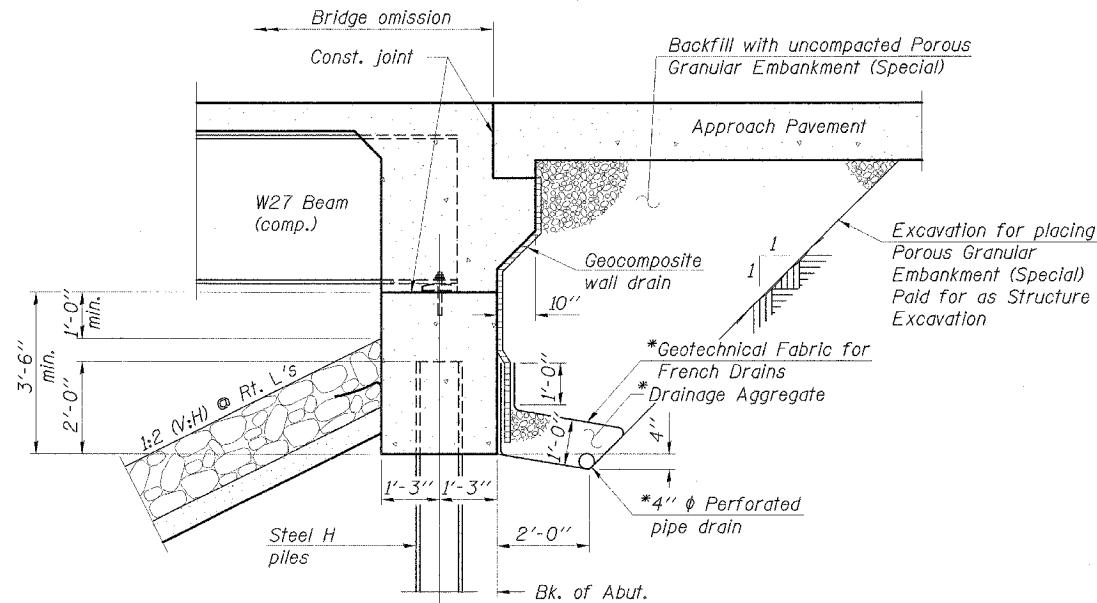


**GENERAL NOTES**

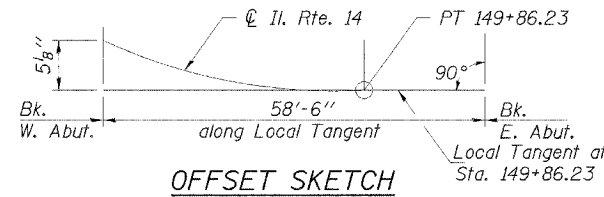
- Fasteners shall be AASHTO M164 Type 1, mechanically galvanized bolts. Bolts  $\frac{3}{4}$  in.  $\phi$ , holes  $\frac{13}{16}$  in.  $\phi$ , unless otherwise noted.
- Calculated weight of Structural Steel = 50,790 (AASHTO M270 Grade 50)  
4,370 (AASHTO M270 Grade 36)
- No field welding is permitted except as specified in the contract documents.
- Reinforcement bars shall conform to the requirements of ASTM A 706 Gr 60 (IL Modified). See Special Provisions.
- Reinforcement bars designated (E) shall be epoxy coated.
- The Inorganic Zinc Rich Primer / Acrylic / Acrylic Paint System shall be used for shop and field painting of new structural steel except where otherwise noted. The color of the final finish coat for all interior steel surfaces shall be gray, Munsell No. 5B 7/1. The color of the final finish coat for the exterior and bottom flange of the fascia beams shall be Interstate Green, Munsell No. 7.5G 4/8. See Special Provision for "Cleaning and Painting New Metal Structures".
- Layout of slope protection system may be varied in the field to suit ground conditions as directed by the Engineer.
- The Contractor shall drive test piles to 110% of the nominal required bearing specified in production locations at substructures specified or approved by the Engineer before ordering the remainder of piles.
- Excavation behind existing abutment walls shall be performed to balance front and back soil pressure before removing the existing superstructure. The Contractor shall sawcut the upper portion of the existing abutment at the stage removal line before Stage 1 removal to ensure the remaining portion will not be prematurely damaged.
- The Contractor is advised that the existing RC slab is in a deteriorated condition with reduced load carrying capacity. It is the Contractor's responsibility to account for the condition of the slab when developing construction procedures for removal and replacement of the superstructure.

F.A.P. RTE.	SECTION	COUNTY	TOTAL SHEETS	SHEET NO.
853	6B-1	FRANKLIN	44	28
STA.	N/A	TO STA.	N/A	
FED. ROAD DIST. NO. 7	ILLINOIS	FED. AID PROJECT		
Contract #98645			SHEET 2 OF 18	

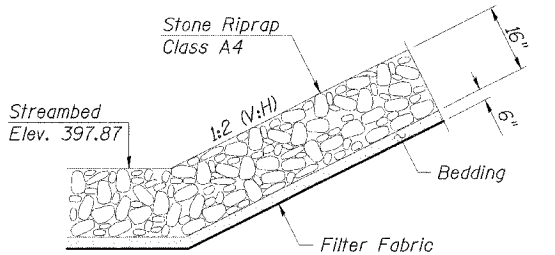


\*Included in the cost of Pipe Underdrains for Structures 4"  
All drainage system components shall extend to 2'-0" from the end of each wingwall except an outlet pipe shall extend until intersecting with the side slopes. The pipes shall drain into concrete headwalls. (See Article 601.05 of the Standard Specifications and Highway Standard 601101)

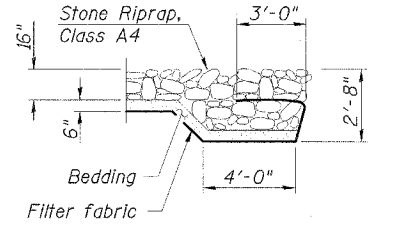
**SECTION THRU INTEGRAL ABUTMENT**



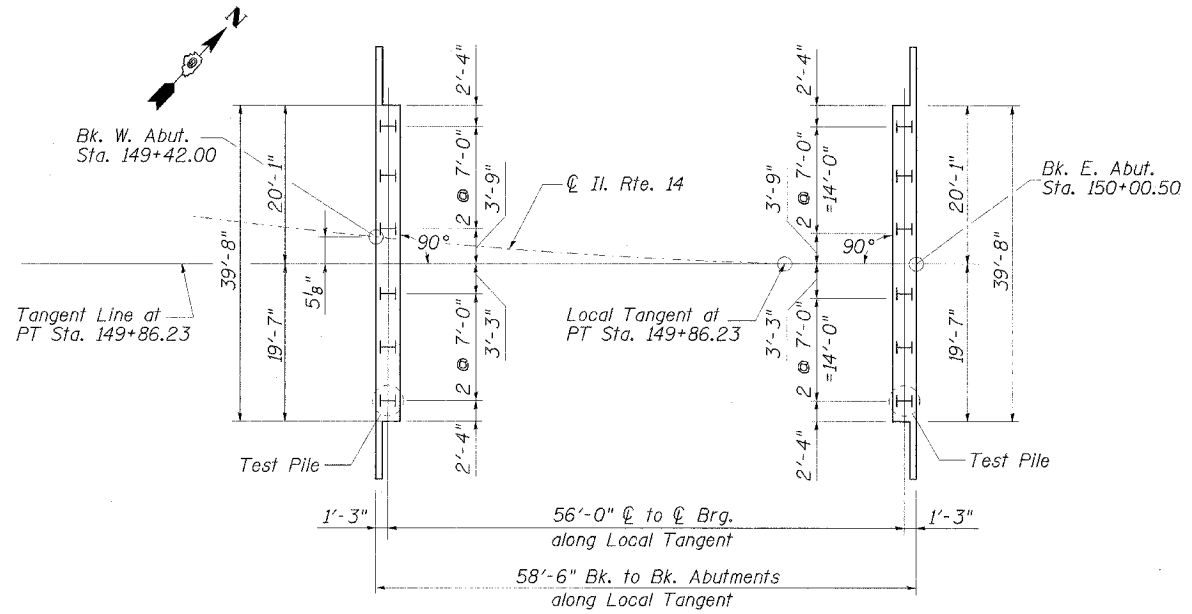
**OFFSET SKETCH**



**STONE RIPRAP DETAIL**



**SECTION A-A**  
(See Sheet 1 for Plan location)



**FOOTING LAYOUT**

**TOTAL BILL OF MATERIAL**

ITEM	UNIT	SUPER	SUB	TOTAL
Porous Granular Embankment, Special	Cu. Yd.		119	119
Stone Riprap, Class A4	Sq. Yd.		593	593
Filter Fabric	Sq. Yd.		701	701
Removal of Existing Structures	Each			1
Structure Excavation	Cu. Yd.		236	236
Floor Drains	Each	3		3
Concrete Structures	Cu. Yd.		37.6	37.6
Concrete Superstructure	Cu. Yd.	90.9		90.9
Bridge Deck Grooving	Sq. Yd.	223		223
Concrete Encasement	Cu. Yd.		4.2	4.2
Protective Coat	Sq. Yd.	287		287
Furnishing and Erecting Structural Steel	L. Sum	1		1
Stud Shear Connectors	Each	1044		1044
Reinforcement Bars, Epoxy Coated	Pound	18,950	5150	24,100
Furnishing Steel Piles HP 10x42	Foot		435	435
Driving Piles	Foot		435	435
Test Pile Steel HP 10x42	Each		2	2
Temporary Sheet Piling	Sq. Ft.		775	775
Steel Railing (Temporary)	Foot	30		30
Name Plates	Each	1		1
Anchor Bolts, 1" $\phi$	Each	24		24
Geocomposite Wall Drain	Sq. Yd.		68	68
Pipe Underdrains for Structures 4"	Foot		132	132
Bar Splicers	Each	270	20	290
Temporary Support System	L. Sum			1

REVISIONS	
NAME	DATE

ILLINOIS DEPARTMENT OF TRANSPORTATION  
**NOTES AND BILL OF MATERIAL**  
 F.A.P. ROUTE 853 (IL. RTE. 14)  
 ILLINOIS ROUTE 14 OVER  
 DRUMMOND BRANCH  
 SECTION 6B-1 STA. 149+71.25  
 STR. NO. 028-0075 - FRANKLIN COUNTY  
 SCALE: NONE DRAWN BY: GLD  
 DATE: 6/6/07 CHECKED BY: WLB

**CMT**  
 CRAWFORD MURPHY & TILLY, INC.  
 CONSULTING ENGINEERS  
 SPRINGFIELD, IL ■ AURORA, IL ■ ST. LOUIS, MO  
 ROCKFORD, IL ■ PEORIA, IL ■ CHICAGO, IL

L:\MD01\060601\SM\_02800175\Drawings\Notes\BL-11.dwg 6/5/2007