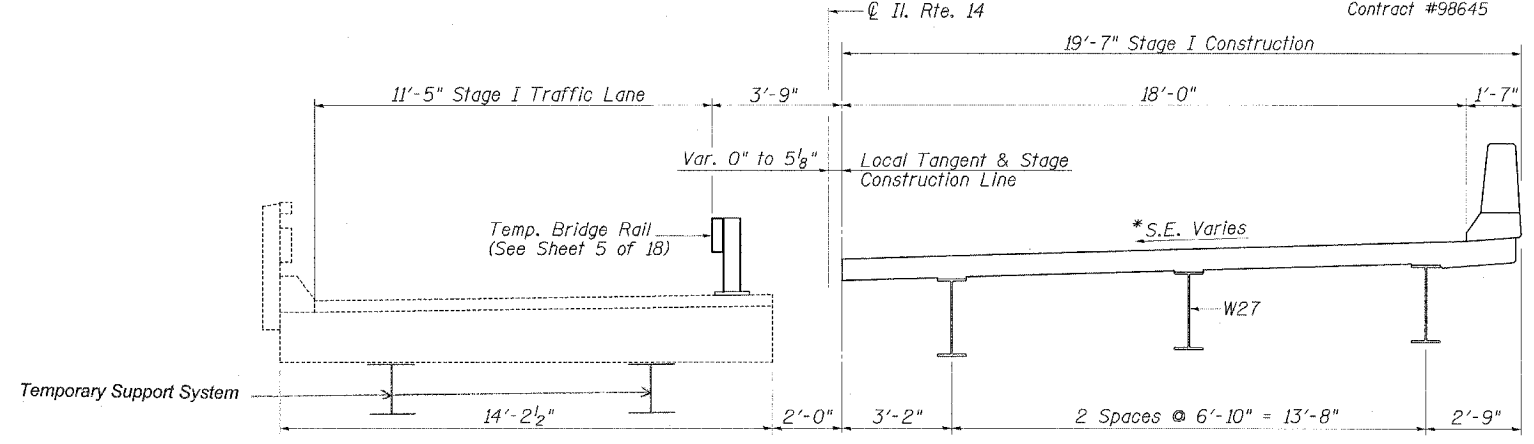
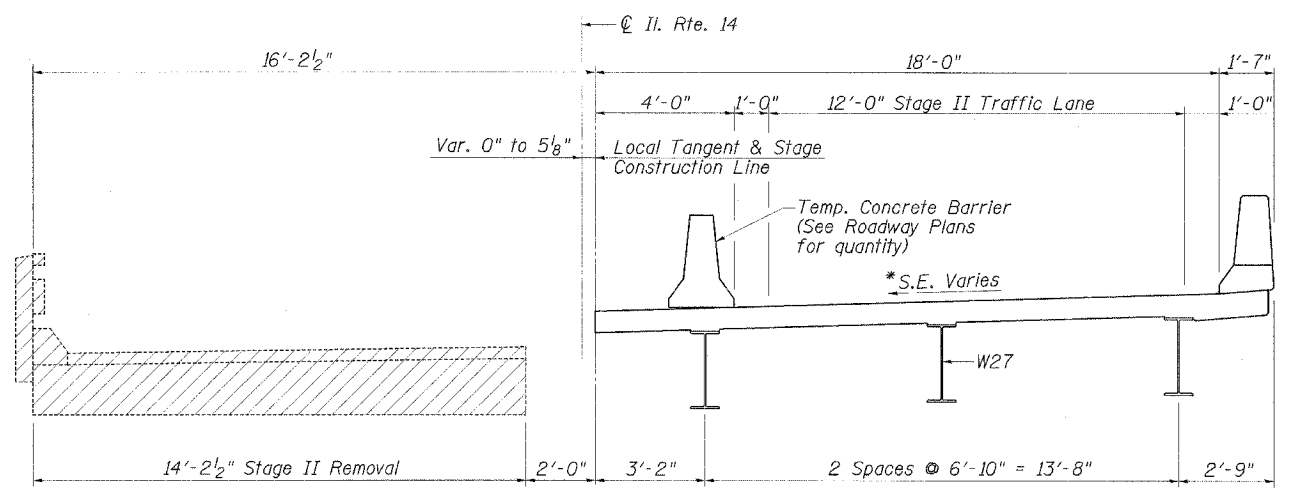


CROSS SECTION - STAGE I REMOVAL
(Looking East)

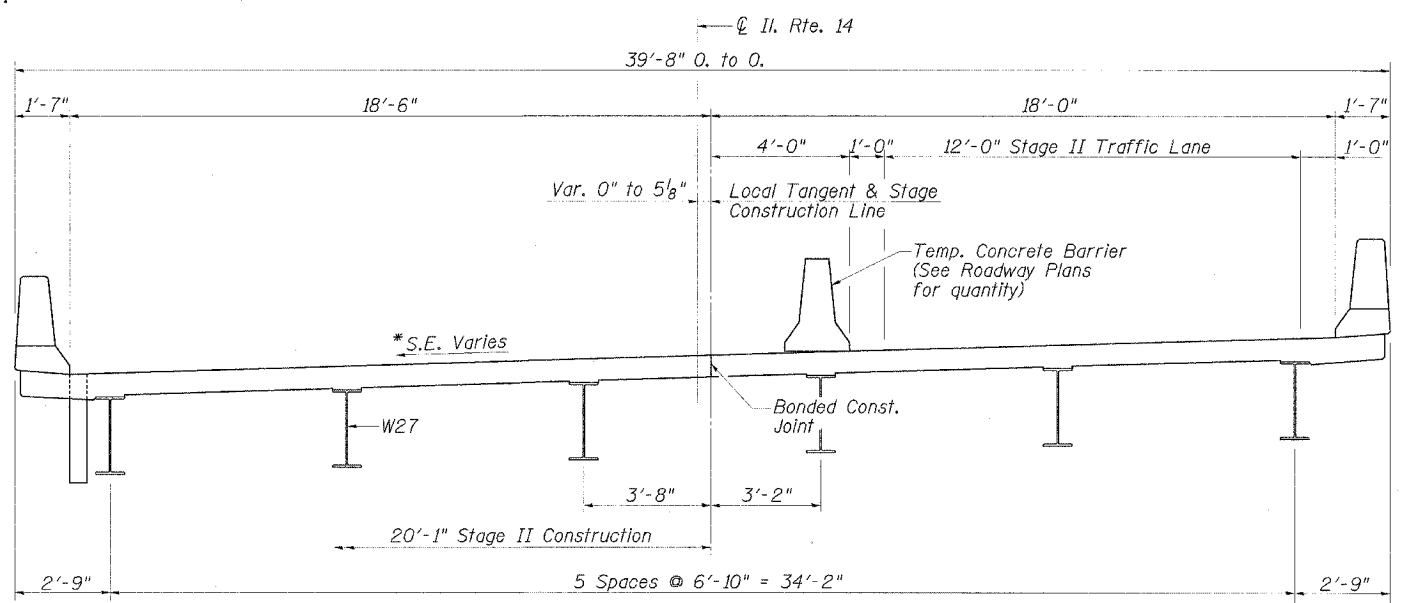
*Superelevation varies from 3.95% at W. Abut. to 2.49% at E. Abut.



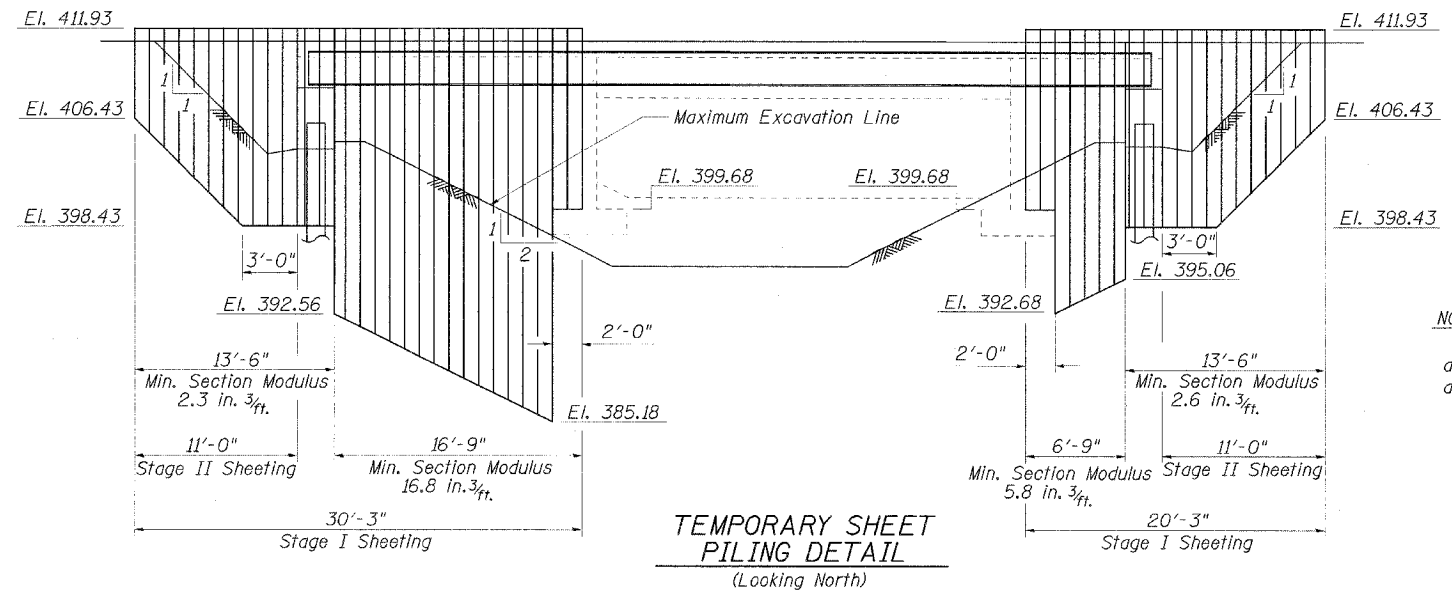
CROSS SECTION - STAGE I CONSTRUCTION
(Looking East)



CROSS SECTION - STAGE II REMOVAL
(Looking East)



CROSS SECTION - STAGE II CONSTRUCTION
(Looking East)

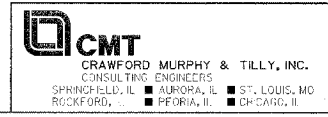


TEMPORARY SHEET PILING DETAIL
(Looking North)

NOTE:
If the Contractor chooses to alter the temporary cantilevered sheet piling design requirements shown on the plans, a design submittal including plan details and calculations will be required for review and acceptance by the Engineer.

REVISIONS	
NAME	DATE

ILLINOIS DEPARTMENT OF TRANSPORTATION
STAGE CONSTRUCTION DETAILS
 F.A.P. ROUTE 853 (IL. RTE. 14)
 ILLINOIS ROUTE 14 OVER
 DRUMMOND BRANCH
 SECTION 6B-1 STA. 149+71.25
 STR. NO. 028-0075 - FRANKLIN COUNTY
 SCALE: NONE DRAWN BY: GLD
 DATE: 6/6/07 CHECKED BY: WLB



L:\PROJECTS\060663\ASL\2280075\Drawings\stage CONSTR DTL.DGN 6/2/2007