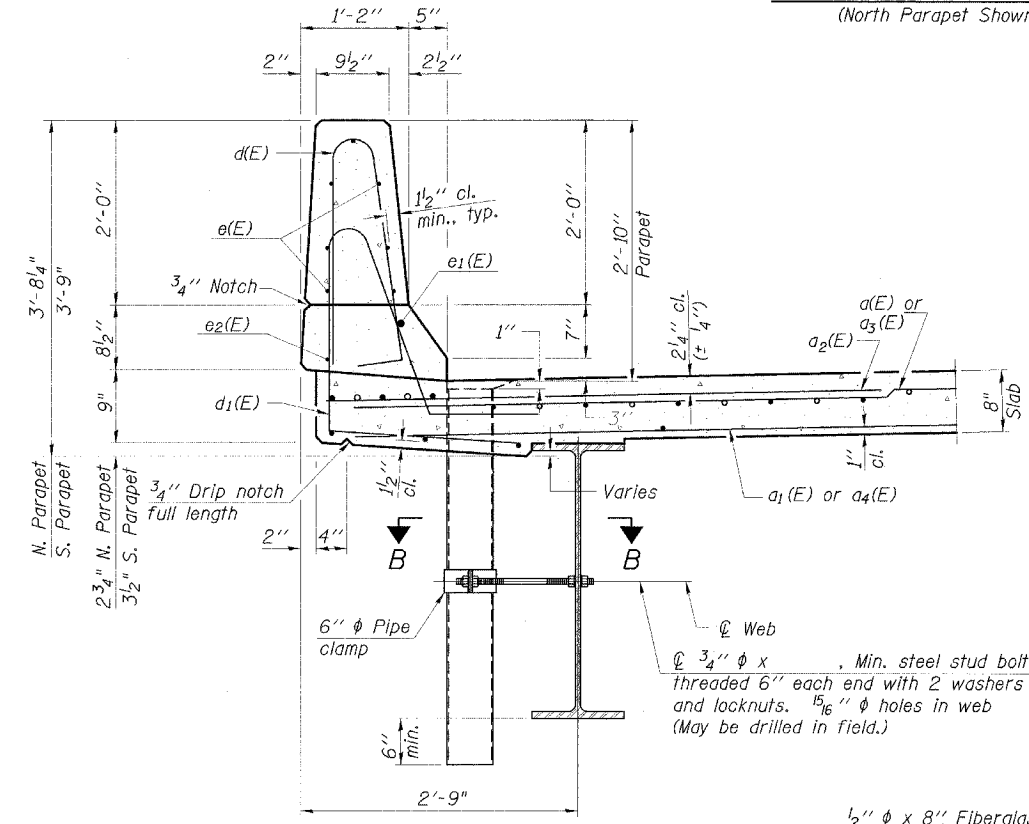
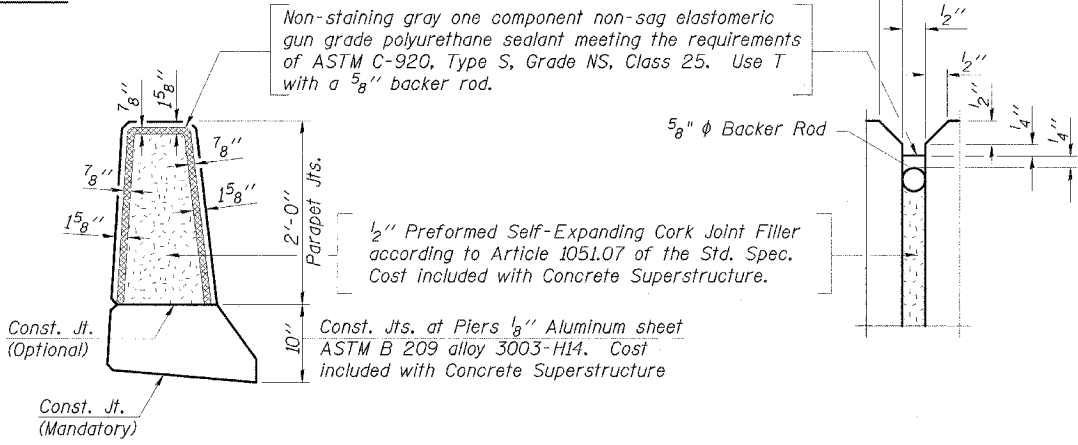


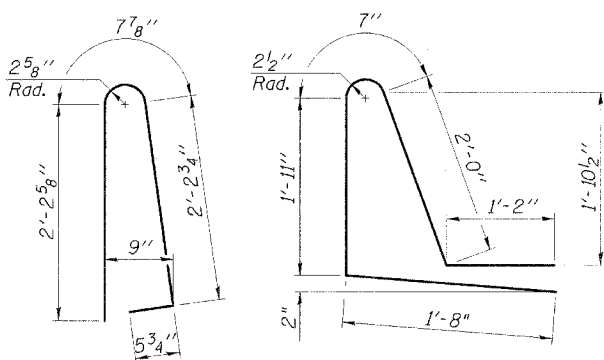
**INSIDE ELEVATION OF PARAPET**  
(North Parapet Shown, South Opposite)



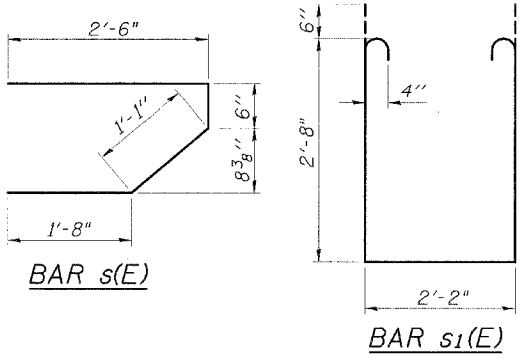
**SECTION THRU PARAPET**



**PARAPET JOINT DETAILS**



**BAR d(E) BAR d1(E)**



**BAR s(E) BAR s1(E)**

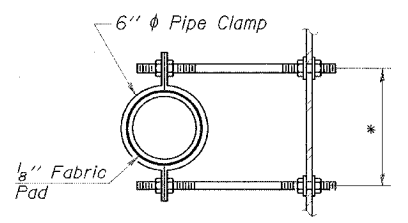
**MIN. BAR LAP**  
\*4 bar - 1'-4"  
\*8 bar - 3'-5"

**SUPERSTRUCTURE BILL OF MATERIAL**

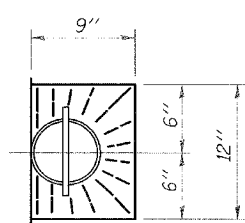
Bar	No.	Size	Length	Shape
a (E)	101	#5	18'-11"	—
a1 (E)	79	#5	18'-3"	—
a2 (E)	202	#6	6'-0"	—
a3 (E)	101	#5	19'-7"	—
a4 (E)	79	#5	18'-11"	—
b (E)	86	#5	30'-2"	—
b1 (E)	111	#5	20'-10"	—
d (E)	130	#5	5'-7"	U
d1 (E)	130	#5	7'-4"	U
e (E)	42	#4	19'-2"	—
e1 (E)	6	#8	21'-8"	—
e2 (E)	8	#4	15'-7"	—
m (E)	4	#6	18'-4"	—
m1 (E)	4	#6	19'-0"	—
m2 (E)	6	#6	19'-1"	—
m3 (E)	6	#6	19'-9"	—
m4 (E)	24	#6	8'-2"	—
m5 (E)	8	#6	6'-6"	—
m6 (E)	4	#6	2'-5"	—
m7 (E)	2	#6	2'-8"	—
m8 (E)	2	#6	3'-4"	—
s (E)	84	#5	5'-9"	U
s1 (E)	74	#4	8'-6"	U
v (E)	78	#5	3'-4"	U
Concrete Superstructure			Cu. Yd.	90.9
Reinforcement Bars, Epoxy Coated			Pound	18,950
Bar Splicers			Each	270

**NOTES:**

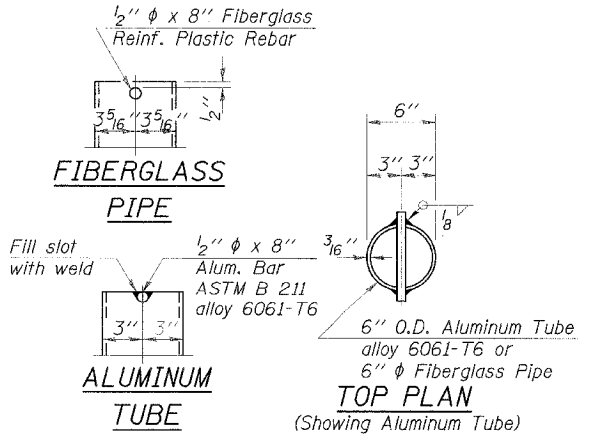
1. Bars indicated thus 3x2-#4 etc. Indicates 3 lines of bars with 2 lengths per line.



**SECTION B-B**  
\* Dimension as required by Pipe Clamp



**TOP PLAN**



**FIBERGLASS PIPE**

**ALUMINUM TUBE**  
(Showing Aluminum Tube)

**CMT**  
CRAWFORD MURPHY & TILLY, INC.  
CONSULTING ENGINEERS  
SPRINGFIELD, IL ■ AURORA, IL ■ ST. LOUIS, MO  
ROCKFORD, IL ■ PEORIA, IL ■ CHICAGO, IL

REVISIONS	
NAME	DATE

ILLINOIS DEPARTMENT OF TRANSPORTATION  
**PARAPET DETAILS**  
F.A.P. ROUTE 853 (IL. RTE. 14)  
ILLINOIS ROUTE 14 OVER  
DRUMMOND BRANCH  
SECTION 6B-1 STA. 149+71.25  
STR. NO. 028-0075 - FRANKLIN COUNTY  
SCALE: NONE DRAWN BY: GLD  
DATE: 6/6/07 CHECKED BY: WLB

L:\DDT\060660\AS\0280075\0280075.dwg PARAPET DETAIL.SLDWG 6/5/2007