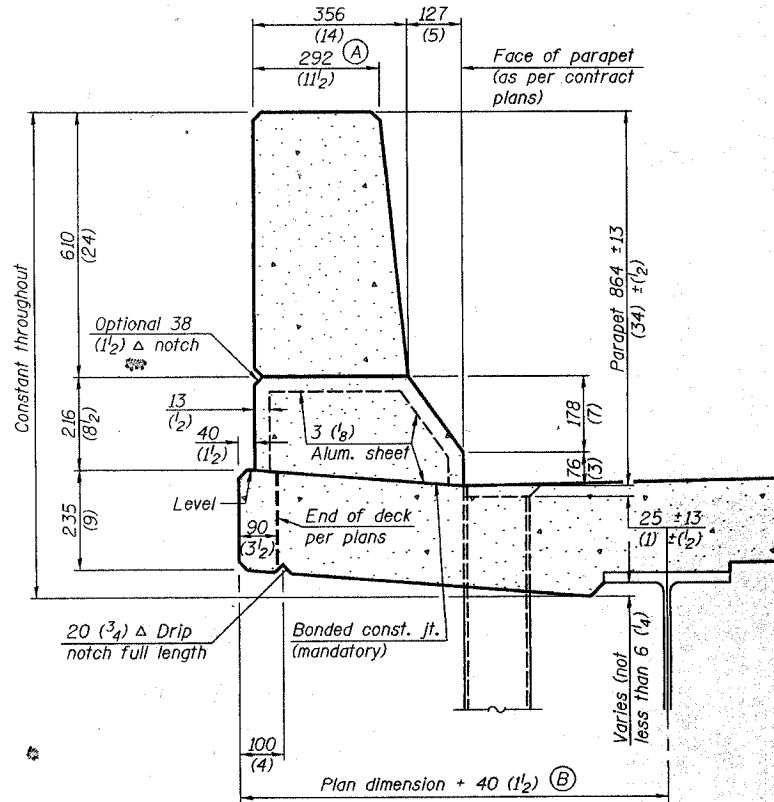


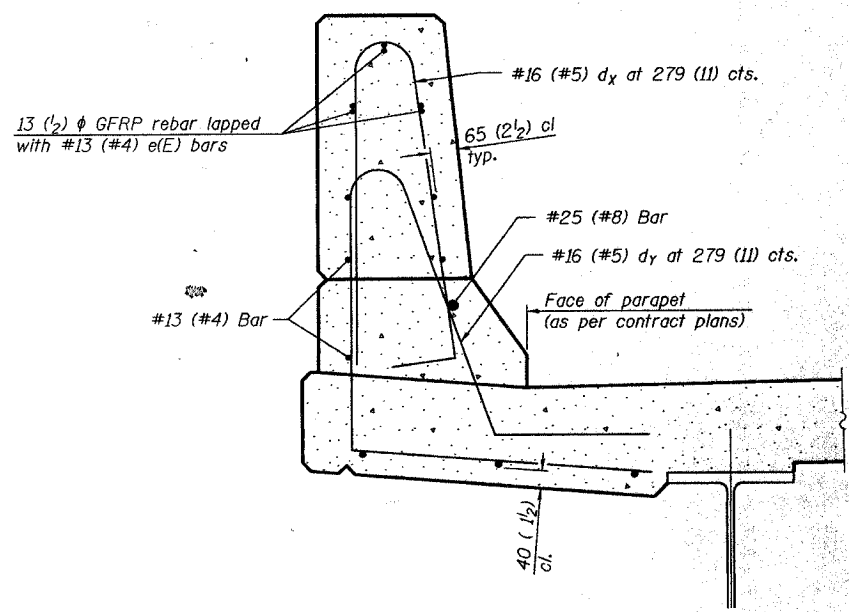
STATE OF ILLINOIS
DEPARTMENT OF TRANSPORTATION

ROUTE NO.	SECTION	COUNTY	SHEET NO.	SHEET NO.
FAP 869	08-1	FRANKLIN	44	44A
FED. ROAD DIST. NO. 7		ILLINOIS FED. AID PROJECT		

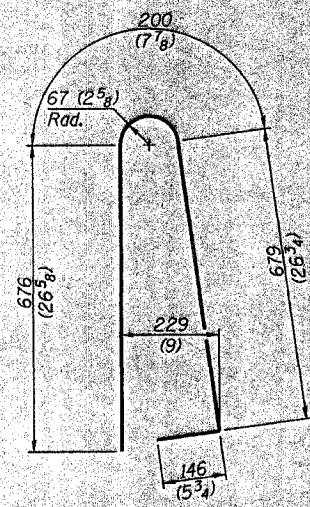
Contract # 98645



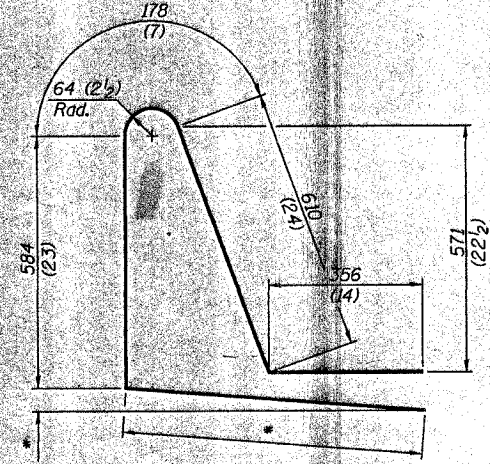
SECTION
(Showing dimensions)



SECTION
(Showing required reinforcement)

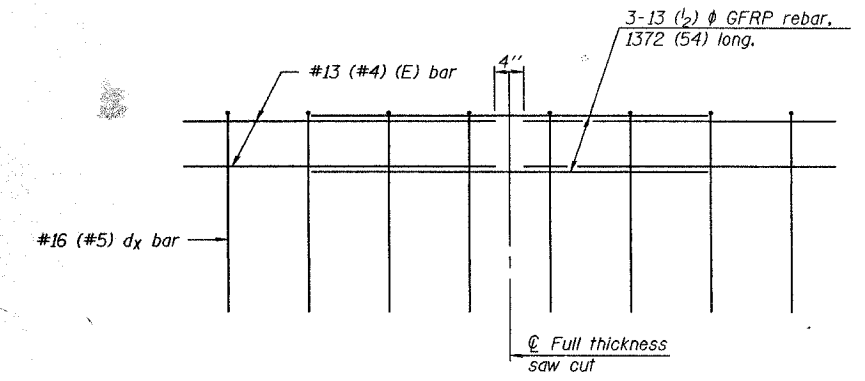


BAR d(x)



BAR d(y)
• Per contract plans

GENERAL NOTES
All dimensions shall remain the same as shown on contract plans, except dimensions A and B which are to be revised as shown to provide additional clearance. Additional concrete needed to revise dimension A and B = 0.0422 m³/m (.0165 cu. yds./ft.) of parapet.
Place aluminum sheet in curb portion at and near piers. Full thickness saw cut at all other locations. Adjust/add joint locations to maintain 3 to 6 meter (10 to 20 foot) spacing.



GFRP REBAR STIFFENING DETAIL
(Place as shown in parapet section)

**CONCRETE PARAPET
SLIPFORMING OPTION**