

DISTRICT ONE BUREAU OF MAINTENANCE: J. STUMPNER
MAINTENANCE LANDSCAPE DESIGNER: R. WANNER / T. JACKSON (847) 705-4171

ROUTE	SECTION	COUNTY	TOTAL SHEETS	SHEET NUMBER
VARIOUS	2005-052DTR	VARIOUS	4	1

CONTRACT 60A30
D-91-029-06

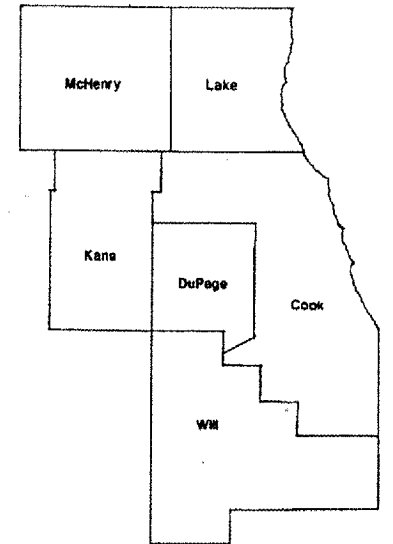
STATE OF ILLINOIS
DEPARTMENT OF TRANSPORTATION
DIVISION OF HIGHWAYS
DISTRICT ONE

PROPOSED HIGHWAY PLANS

ROUTE: VARIOUS
SECTION 2005-052DTR
DEAD AND DISEASED TREE REMOVAL
VARIOUS COUNTIES
C-91-029-06

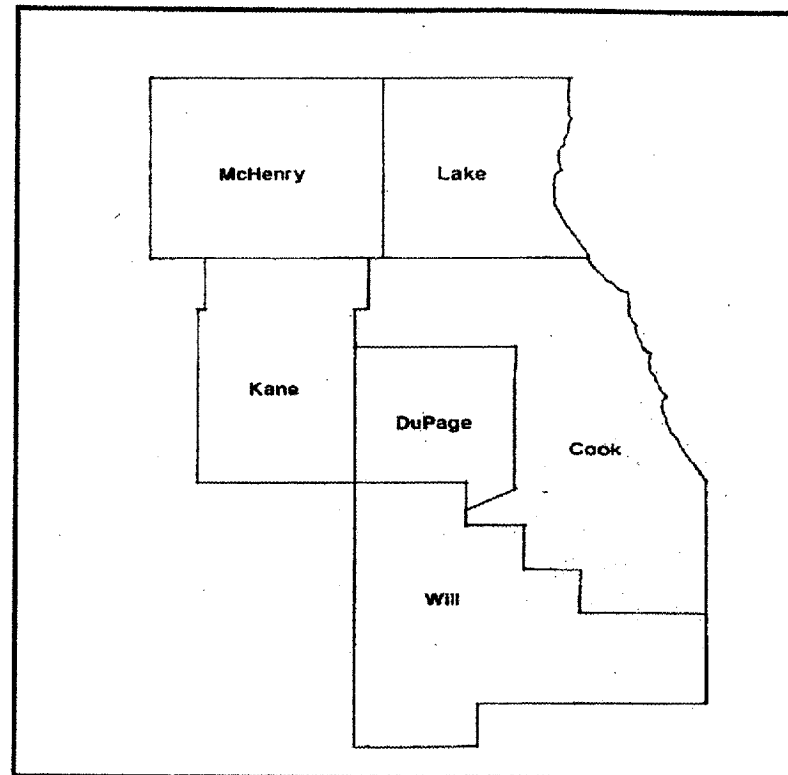
INDEX OF SHEETS

- 1) COVER SHEET, INDEX OF SHEETS
- 2) SUMMARY OF QUANTITIES, STATE STANDARDS
- 3) SAMPLE WORK ORDER
- 4) TC-17 TRAFFIC CONTROL FOR FREEWAY SHOULDER CLOSURES



LOCATION OF IMPROVEMENT INDICATED THIS:

IMPROVEMENT IS IN VARIOUS
LOCATIONS WITHIN DISTRICT
ONE



STATE OF ILLINOIS
DEPARTMENT OF TRANSPORTATION
DIVISION OF HIGHWAYS

SUBMITTED: Aug. 21 2006
Diane O'Keefe
DEPUTY DIRECTOR OF HIGHWAYS, REGION ENGINEER

October 13, 2006
Mike Hine
ENGINEER OF DESIGN AND ENVIRONMENT

October 13, 2006
Milton R. Sees, P.E.
DIRECTOR OF HIGHWAYS, CHIEF ENGINEER

**PRINTED BY THE AUTHORITY
OF THE STATE OF ILLINOIS**

J.U.L.I.E.: JOINT UTILITY LOCATION
INFORMATION FOR EXCAVATION
(800) 892-0123

CONTRACT NO. 60A30

ROUTE	SECTION	COUNTY	TOTAL SHEETS	SHEET NUMBER
VARIOUS	2005-052DTR	VARIOUS	4	2

CONTRACT 60A30

SUMMARY OF QUANTITIES

CODE NUMBER	DESCRIPTION	UNIT	CONTRACT MAINT FUND TOTAL	FORMAL CONTRACTS FUND TOTAL	URBAN
					TOTAL 100% STATE Y004
20100110	TREE REMOVAL (6-15 UNITS DIA.)	UNIT	2500		2500
20100210	TREE REMOVAL (OVER 15 UNITS DIA.)	UNIT	1000	4700	5700
X2010100	TREE LIMB REMOVAL (4-10 INCHES DIA.)	EACH	25		25
X2010200	TREE LIMB REMOVAL (OVER 10 INCHES DIA.)	EACH	10		10
X2010300	TREE REMOVAL (UNDER 6 UNITS DIA.)	UNIT	75		75
X2010400	STUMP REMOVAL ONLY	UNIT	50		50
Z0064800	SELECTIVE CLEARING	UNIT	3		3

STATE STANDARDS

701001-01 701006-02 701101-01 701106-01

701201-02 701301-02 701421-01

701501-03 701601-04 702001-06

ILLINOIS DEPARTMENT OF TRANSPORTATION

SUMMARY OF QUANTITIES

DEAD AND DISEASED TREE REMOVAL

ROUTE	SECTION	COUNTY	TOTAL SHEETS	SHEET NUMBER
VARIOUS	2005-052DTR	VARIOUS	4	3

CONTRACT 60A30

ID: _____

DEAD AND DISEASED TREE REMOVAL REQUEST

REQUESTED BY: _____ DATE OF REQUEST: _____

YARD: _____ TELEPHONE: () _____

(Please complete information when request for tree removal is from outside the Bureau of Maintenance)

NAME: _____

ADDRESS: _____

TELEPHONE: () _____

LOCATION OF DEAD/DISEASED TREE(S)

(Please fill out completely to expedite locating the repair)

COUNTY: _____ TOWN/CITY: _____

MARKED/NAMED ROUTE: _____

DIRECTIONS FROM NEAREST MAJOR CROSS ROAD OR MAJOR LANDMARK: _____

SIDE OF ROADWAY: _____

ADDITIONAL DIRECTIONS TO TREE: _____

PLEASE INDICATE APPROXIMATE SIZE AND NUMBER OF TREES BASED ON VISUAL ESTIMATE

COMMENTS: _____
(Size/Number)

OFFICE USE ONLY

DATE INSPECTED: _____ TYPE OF REMOVAL: _____

DTR #: _____

CONTRACT #: _____

WORK ORDER #: _____ NOTES: _____

POSTED IN SUMMARY: _____

RETURN REQUESTS TO CONTRACTS SECTION

s:\wpl\contracts\forms\gr60110e.doc

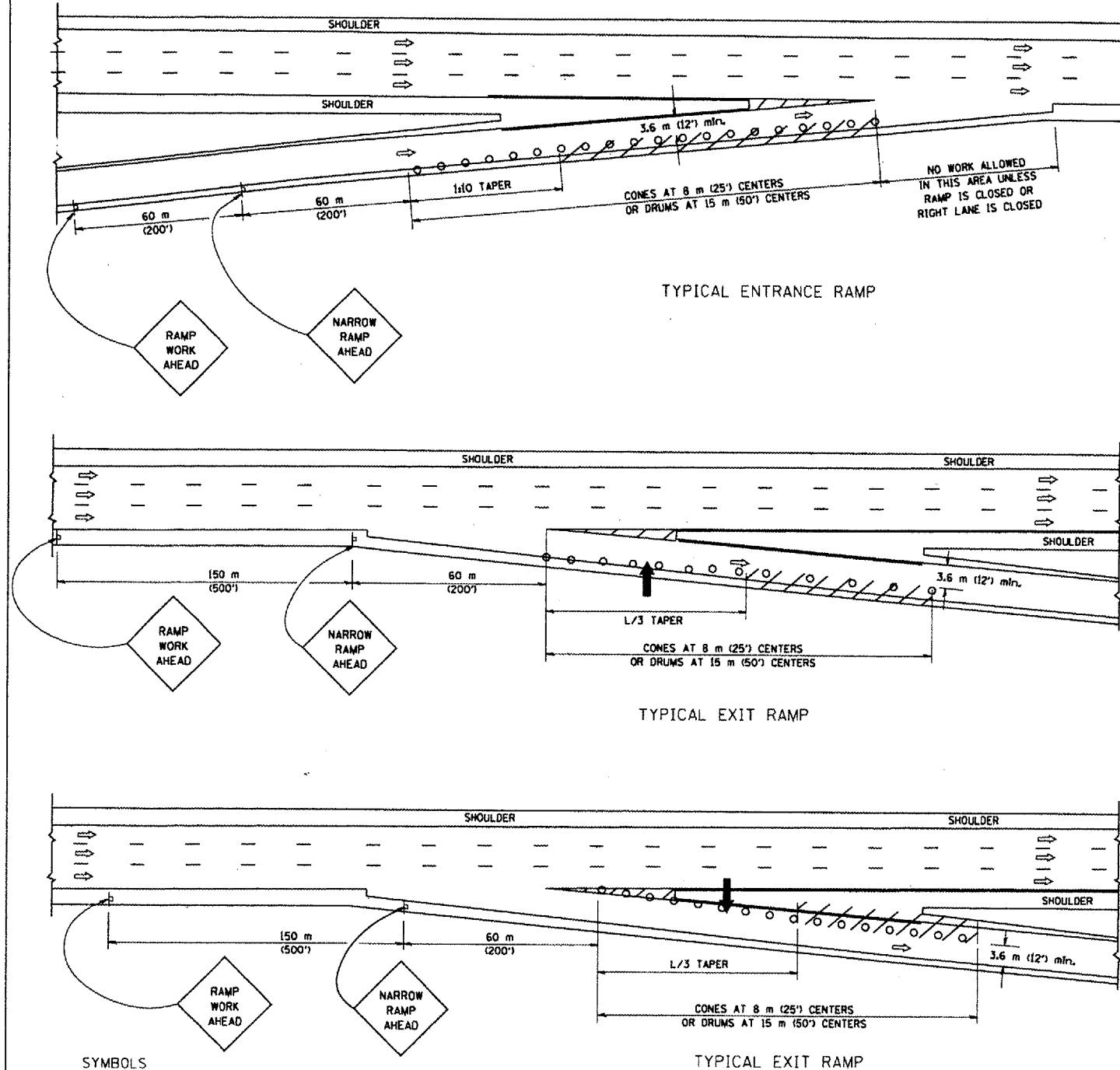
10-28-98

ILLINOIS DEPARTMENT OF TRANSPORTATION

DEAD AND DISEASED TREE REMOVAL

SAMPLE WORK ORDER

PARTIAL RAMP CLOSURE DETAILS



TYPICAL ENTRANCE RAMP

TYPICAL EXIT RAMP

TYPICAL EXIT RAMP

SYMBOLS

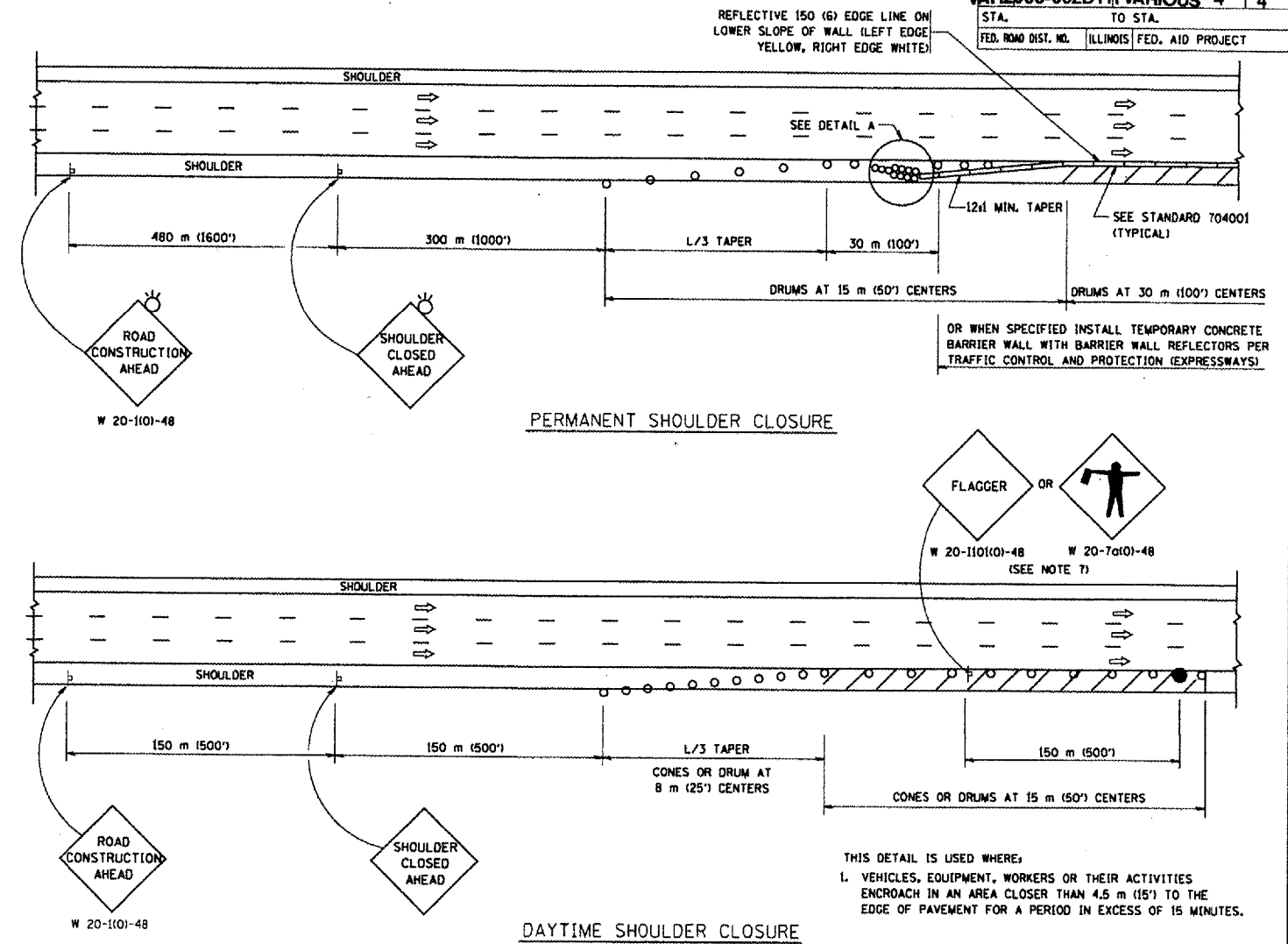
- ARROWBOARD
- WORK AREA
- SIGN ON PORTABLE OR PERMANENT SUPPORT
- FLAGGER WITH CONTROL SIGN
- DRUM WITH MONO-DIRECTIONAL STEADY BURNING LIGHT
- CONES - 100 (28) IN HEIGHT

GENERAL NOTES

1. THE "L" DISTANCE EQUALS:

SPEED LIMIT	FORMULAS
80 Km/h (45 mph) OR GREATER:	METRIC ENGLISH
	$L = 0.65(W/S)$ $L = (W/S)$
	W = WIDTH OF OFFSET IN METERS (FEET)
	S = NORMAL POSTED SPEED KM/H (MPH)
2. PLASTIC DRUMS WITH HIGH PERFORMANCE REFLECTIVE SHEETING AND STEADY BURNING LIGHTS ARE REQUIRED FOR ALL NIGHTTIME CLOSURES.
3. ALL SIGNS SHALL BE POST MOUNTED IF THE CLOSURE TIME EXCEEDS FOUR DAYS.
4. FLASHING LIGHTS SHALL BE USED DURING THE HOURS OF DARKNESS AND SHALL BE INSTALLED ABOVE THE FIRST TWO SETS OF SIGNS.

SHOULDER CLOSURE DETAILS

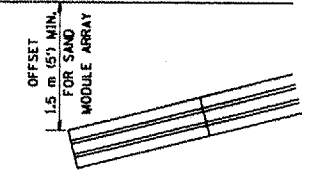


PERMANENT SHOULDER CLOSURE

DAYTIME SHOULDER CLOSURE

THIS DETAIL IS USED WHERE:
1. VEHICLES, EQUIPMENT, WORKERS OR THEIR ACTIVITIES ENCR OACH IN AN AREA CLOSER THAN 4.5 m (15') TO THE EDGE OF PAVEMENT FOR A PERIOD IN EXCESS OF 15 MINUTES.

ARRAY DESIGN PER MANUFACTURER TO BE NCHRP 350 COMPLIANT FOR POSTED SPEED.



DETAIL "A"
IMPACT ATTENUATOR, TEMPORARY
(SEE NOTE 5)

ALL DIMENSIONS ARE IN MILLIMETERS (INCHES) UNLESS OTHERWISE SHOWN.

REVISIONS	
NAME	DATE
DWS	11/96
JAF	12/02
NCHRP 350	04/03
JAF	2/06

ILLINOIS DEPARTMENT OF TRANSPORTATION
TRAFFIC CONTROL DETAILS
FOR FREEWAY
SHOULDER CLOSURES
PARTIAL RAMP CLOSURES

SCALE: NONE
DATE: 3/1/2006

DESIGNED BY: DWS
DRAWN BY:
CHECKED BY:
TC-17