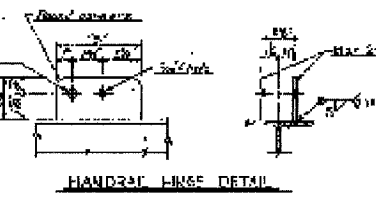
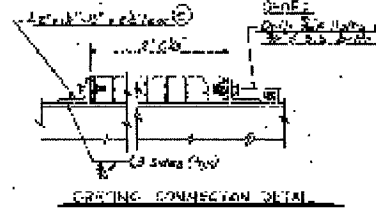
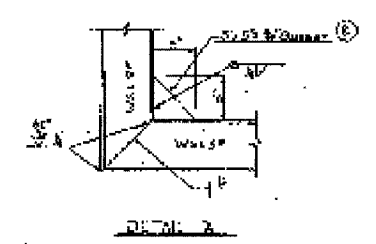
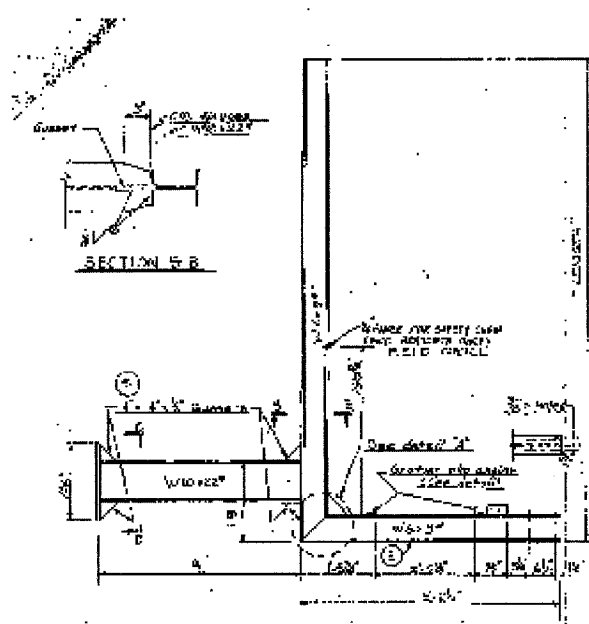
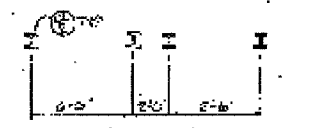


STATE OF ILLINOIS
DEPARTMENT OF TRANSPORTATION



SIGN / WALKWAY BRACKETS

ITEM NO.	QTY	PK	A	B	SPACING
204-B	6	24	24	24	24
204-D	2	24	24	24	24



NOTE: REUSE EXISTING GRATING, HANDRAIL AND HANDRAIL LIGHT SUPPORT CHANNELS.

Bill of Material

QTY	ITEM	Description	Length	Remarks
2	1	4x4 x 12	12'-0"	SEE DETAIL
2	2	2x8	10'-0"	
6	3	2x8	10'-0"	REMOVE END
4	4	2x8	10'-0"	do
2	5	2x8	10'-0"	do
2	6	2x8	10'-0"	do
2	7	2x8	10'-0"	do
2	8	2x8	10'-0"	do
2	9	2x8	10'-0"	do
2	10	2x8	10'-0"	do
2	11	2x8	10'-0"	do
2	12	2x8	10'-0"	do
2	13	2x8	10'-0"	do
2	14	2x8	10'-0"	do
2	15	2x8	10'-0"	do
2	16	2x8	10'-0"	do
2	17	2x8	10'-0"	do
2	18	2x8	10'-0"	do
2	19	2x8	10'-0"	do
2	20	2x8	10'-0"	do
2	21	2x8	10'-0"	do
2	22	2x8	10'-0"	do
2	23	2x8	10'-0"	do
2	24	2x8	10'-0"	do
2	25	2x8	10'-0"	do
2	26	2x8	10'-0"	do
2	27	2x8	10'-0"	do
2	28	2x8	10'-0"	do
2	29	2x8	10'-0"	do
2	30	2x8	10'-0"	do
2	31	2x8	10'-0"	do
2	32	2x8	10'-0"	do
2	33	2x8	10'-0"	do
2	34	2x8	10'-0"	do
2	35	2x8	10'-0"	do
2	36	2x8	10'-0"	do
2	37	2x8	10'-0"	do
2	38	2x8	10'-0"	do
2	39	2x8	10'-0"	do
2	40	2x8	10'-0"	do
2	41	2x8	10'-0"	do
2	42	2x8	10'-0"	do
2	43	2x8	10'-0"	do
2	44	2x8	10'-0"	do
2	45	2x8	10'-0"	do
2	46	2x8	10'-0"	do
2	47	2x8	10'-0"	do
2	48	2x8	10'-0"	do
2	49	2x8	10'-0"	do
2	50	2x8	10'-0"	do

MATERIAL SPECIFICATIONS:
STEEL: A36, A572, A588, A590, A595, A598, A599, A600, A601, A602, A603, A604, A605, A606, A607, A608, A609, A610, A611, A612, A613, A614, A615, A616, A617, A618, A619, A620, A621, A622, A623, A624, A625, A626, A627, A628, A629, A630, A631, A632, A633, A634, A635, A636, A637, A638, A639, A640, A641, A642, A643, A644, A645, A646, A647, A648, A649, A650, A651, A652, A653, A654, A655, A656, A657, A658, A659, A660, A661, A662, A663, A664, A665, A666, A667, A668, A669, A670, A671, A672, A673, A674, A675, A676, A677, A678, A679, A680, A681, A682, A683, A684, A685, A686, A687, A688, A689, A690, A691, A692, A693, A694, A695, A696, A697, A698, A699, A700, A701, A702, A703, A704, A705, A706, A707, A708, A709, A710, A711, A712, A713, A714, A715, A716, A717, A718, A719, A720, A721, A722, A723, A724, A725, A726, A727, A728, A729, A730, A731, A732, A733, A734, A735, A736, A737, A738, A739, A740, A741, A742, A743, A744, A745, A746, A747, A748, A749, A750, A751, A752, A753, A754, A755, A756, A757, A758, A759, A760, A761, A762, A763, A764, A765, A766, A767, A768, A769, A770, A771, A772, A773, A774, A775, A776, A777, A778, A779, A780, A781, A782, A783, A784, A785, A786, A787, A788, A789, A790, A791, A792, A793, A794, A795, A796, A797, A798, A799, A800, A801, A802, A803, A804, A805, A806, A807, A808, A809, A810, A811, A812, A813, A814, A815, A816, A817, A818, A819, A820, A821, A822, A823, A824, A825, A826, A827, A828, A829, A830, A831, A832, A833, A834, A835, A836, A837, A838, A839, A840, A841, A842, A843, A844, A845, A846, A847, A848, A849, A850, A851, A852, A853, A854, A855, A856, A857, A858, A859, A860, A861, A862, A863, A864, A865, A866, A867, A868, A869, A870, A871, A872, A873, A874, A875, A876, A877, A878, A879, A880, A881, A882, A883, A884, A885, A886, A887, A888, A889, A890, A891, A892, A893, A894, A895, A896, A897, A898, A899, A900, A901, A902, A903, A904, A905, A906, A907, A908, A909, A910, A911, A912, A913, A914, A915, A916, A917, A918, A919, A920, A921, A922, A923, A924, A925, A926, A927, A928, A929, A930, A931, A932, A933, A934, A935, A936, A937, A938, A939, A940, A941, A942, A943, A944, A945, A946, A947, A948, A949, A950, A951, A952, A953, A954, A955, A956, A957, A958, A959, A960, A961, A962, A963, A964, A965, A966, A967, A968, A969, A970, A971, A972, A973, A974, A975, A976, A977, A978, A979, A980, A981, A982, A983, A984, A985, A986, A987, A988, A989, A990, A991, A992, A993, A994, A995, A996, A997, A998, A999, A1000.

CONTRACT INFORMATION

DATE: 09/19/2006

APP: 04-0000

PROJECT: HURTT FABRICATING CORP

P.O. Box 128
Marechal, MO. 64658
ph. 816-376-3501

OWNER: ILLINOIS DEPARTMENT OF TRANSPORTATION

CONTRACT NO: 60B16

SECTION: 13

SHEET NO: 12

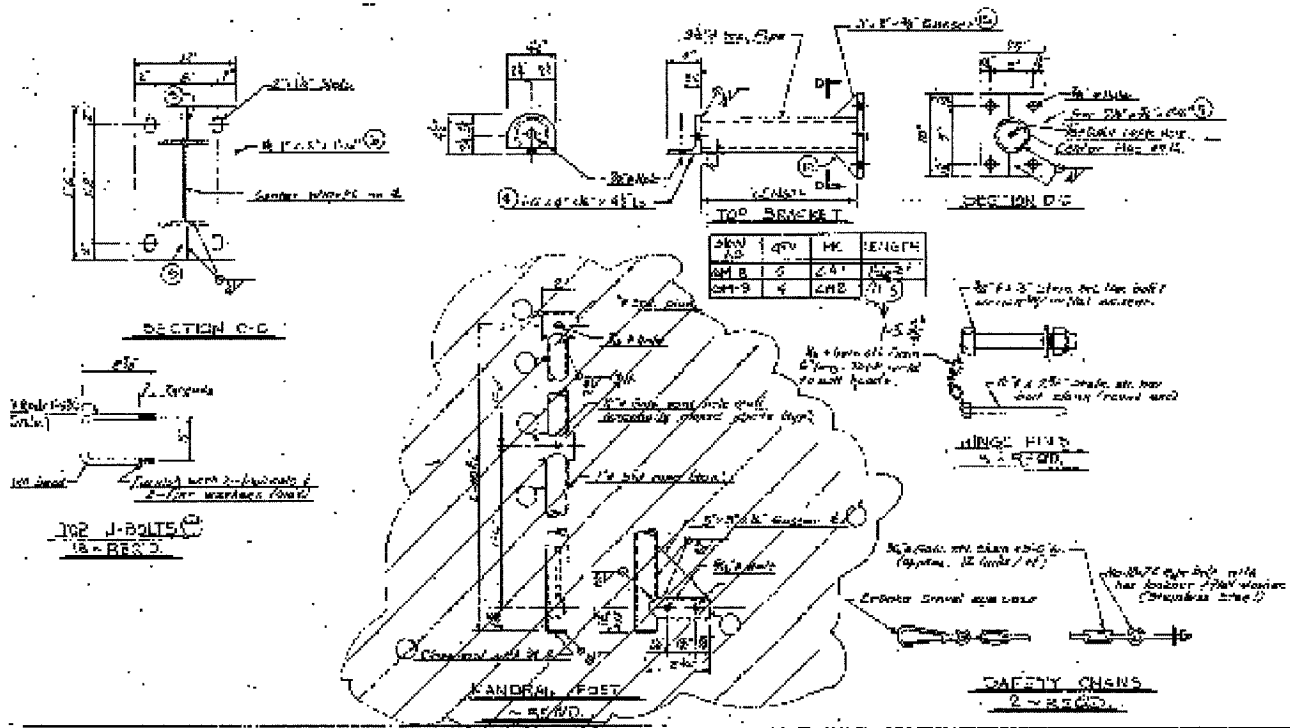
DATE: 09/19/2006

DESIGNED BY: S.J.B.

CHECKED BY: P.S.J.

DRAWN BY: Drew Christopher

SCALE: AS SHOWN



DESIGNED S.J.B.

CHECKED P.S.J.

DRAWN Drew Christopher

CHECKED S.J.B. P.S.J.

September 19, 2006

EXAMINED John A. Morris
ENGINEER OF STRUCTURAL SERVICES

PASSED Ralph E. Anderson
ENGINEER OF BRIDGES AND STRUCTURES

FOR INFORMATION ONLY

EXISTING SIGN STRUCTURE DETAILS
GLENWOOD- LANSING RD / IL 394
COOK COUNTY
SN 016-0918