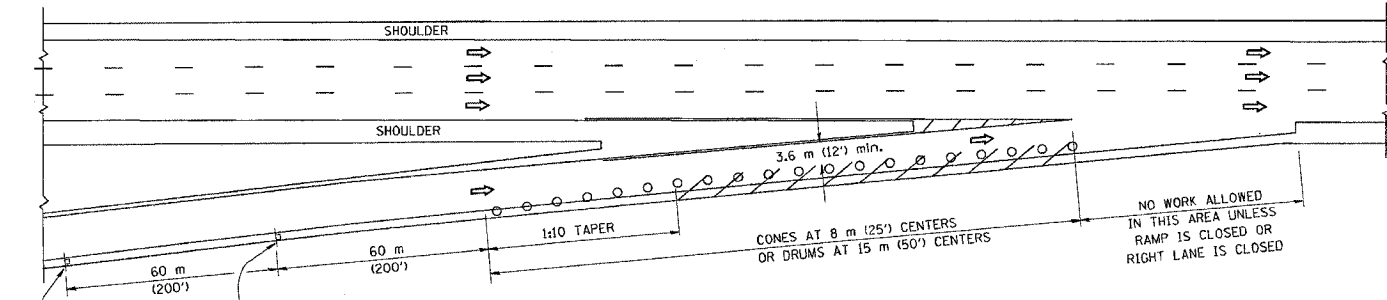


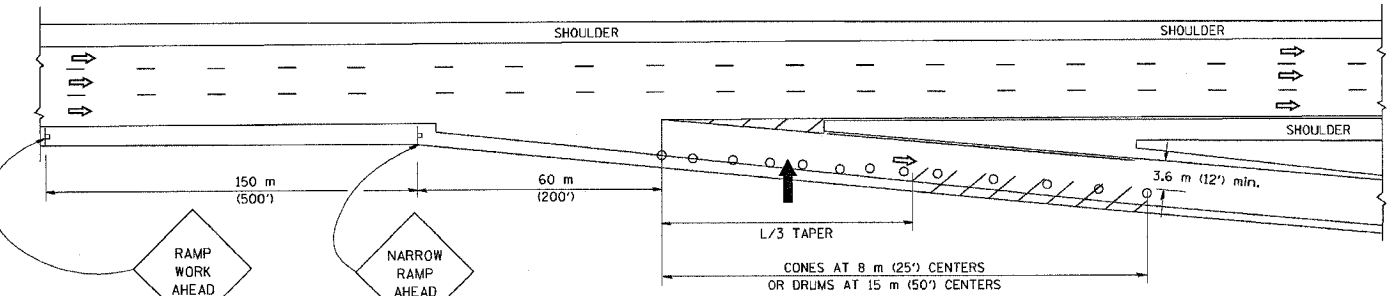
|                     |                           |        |              |           |
|---------------------|---------------------------|--------|--------------|-----------|
| F.A. RTE.           | SECTION                   | COUNTY | TOTAL SHEETS | SHEET NO. |
| 1/1R 2006-016 I     | VAH                       | VAH    | 13           | 13        |
| STA.                | TO STA.                   |        |              |           |
| FED. ROAD DIST. NO. | ILLINOIS FED. AID PROJECT |        |              |           |

PARTIAL RAMP CLOSURE DETAILS

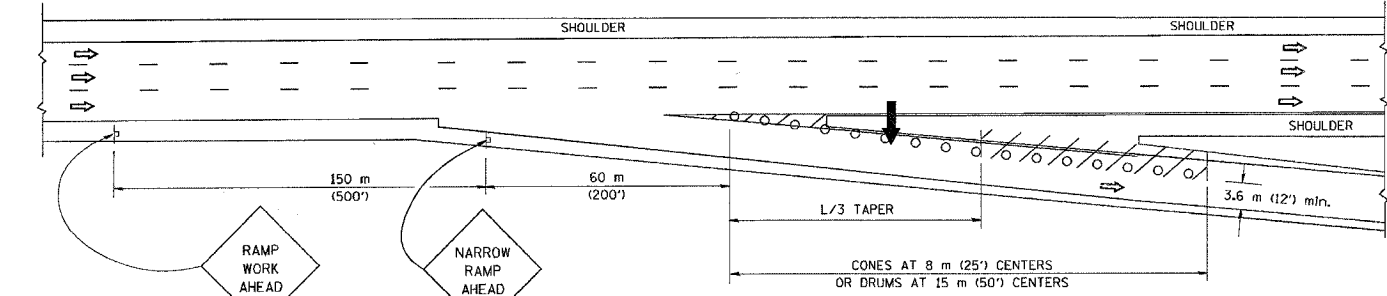
SHOULDER CLOSURE DETAILS



TYPICAL ENTRANCE RAMP



TYPICAL EXIT RAMP



TYPICAL EXIT RAMP

SYMBOLS

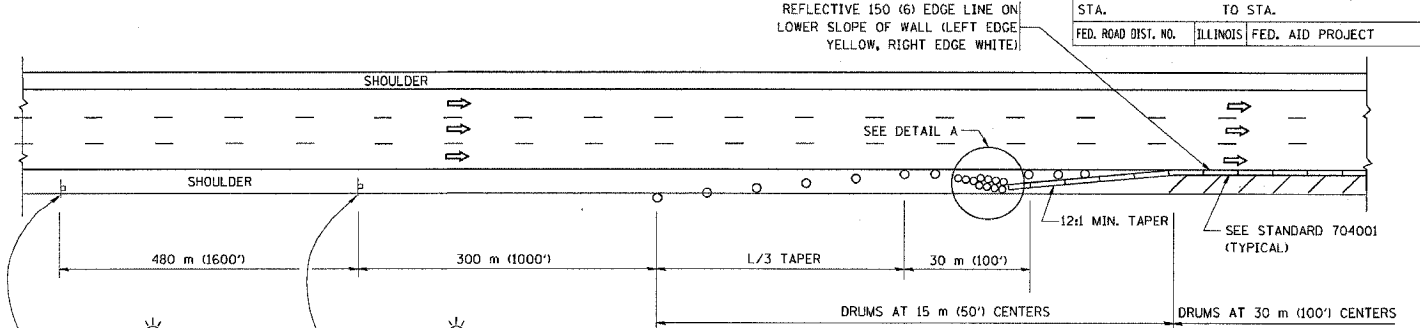
- ARROWBOARD
- WORK AREA
- SIGN ON PORTABLE OR PERMANENT SUPPORT
- FLAGGER WITH CONTROL SIGN
- DRUM WITH MONO-DIRECTIONAL STEADY BURNING LIGHT
- CONES - 700 (28) IN HEIGHT

GENERAL NOTES

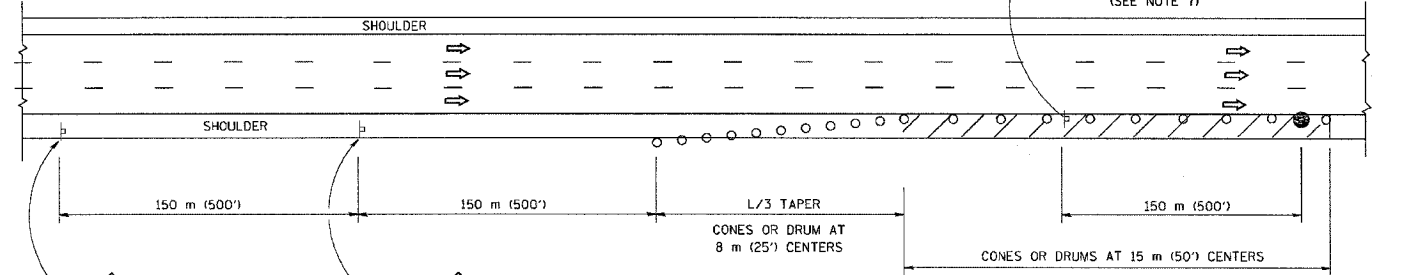
1. THE "L" DISTANCE EQUALS:
 

|                              |                        |
|------------------------------|------------------------|
| SPEED LIMIT                  | FORMULAS               |
| 80 km/h (45 mph) OR GREATER: | METRIC: $L=0.65(W)(S)$ |
|                              | ENGLISH: $L=(W)(S)$    |

W = WIDTH OF OFFSET IN METERS (FEET)  
S = NORMAL POSTED SPEED KM/H (MPH)
2. PLASTIC DRUMS WITH HIGH PERFORMANCE REFLECTIVE SHEETING AND STEADY BURNING LIGHTS ARE REQUIRED FOR ALL NIGHTTIME CLOSURES.
3. ALL SIGNS SHALL BE POST MOUNTED IF THE CLOSURE TIME EXCEEDS FOUR DAYS.
4. FLASHING LIGHTS SHALL BE USED DURING THE HOURS OF DARKNESS AND SHALL BE INSTALLED ABOVE THE FIRST TWO SETS OF SIGNS.

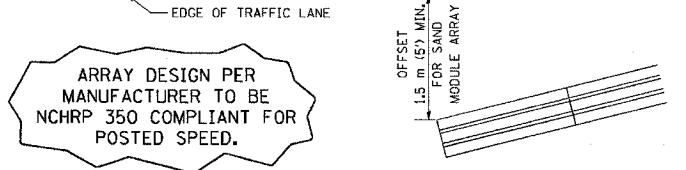


PERMANENT SHOULDER CLOSURE



DAYTIME SHOULDER CLOSURE

THIS DETAIL IS USED WHERE:  
1. VEHICLES, EQUIPMENT, WORKERS OR THEIR ACTIVITIES ENCR OACH IN AN AREA CLOSER THAN 4.5 m (15') TO THE EDGE OF PAVEMENT FOR A PERIOD IN EXCESS OF 15 MINUTES.



DETAIL "A"  
IMPACT ATTENUATOR, TEMPORARY  
(SEE NOTE 5)

ALL DIMENSIONS ARE IN MILLIMETERS (INCHES) UNLESS OTHERWISE SHOWN.

| REVISIONS |       |
|-----------|-------|
| NAME      | DATE  |
| DWS       | 11/96 |
| JAF       | 12/02 |
| NCHRP 350 | 04/03 |
| JAF       | 2/06  |

ILLINOIS DEPARTMENT OF TRANSPORTATION  
**TRAFFIC CONTROL DETAILS FOR FREEWAY SHOULDER CLOSURES PARTIAL RAMP CLOSURES**  
DESIGNED BY: DWS  
DRAWN BY:  
CHECKED BY:  
TC-17  
REVISION DATE: 02/28/06

PLOT DATE = 3/1/2006  
 FILE NAME = K:\address\17.dgn  
 PLOT SCALE = 50.0000 / 1 IN.  
 USER NAME = Jayne