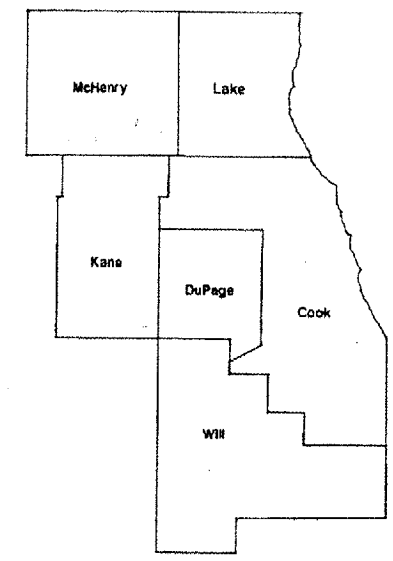


ROUTE	SECTION	COUNTY	TOTAL SHEETS	SHEET NUMBER
VARIOUS	2006-035 LS	VARIOUS	27+1 = 28	1

CONTRACT 60B91

STATE OF ILLINOIS
DEPARTMENT OF TRANSPORTATION
DIVISION OF HIGHWAYS
DISTRICT ONE
PROPOSED HIGHWAY PLANS

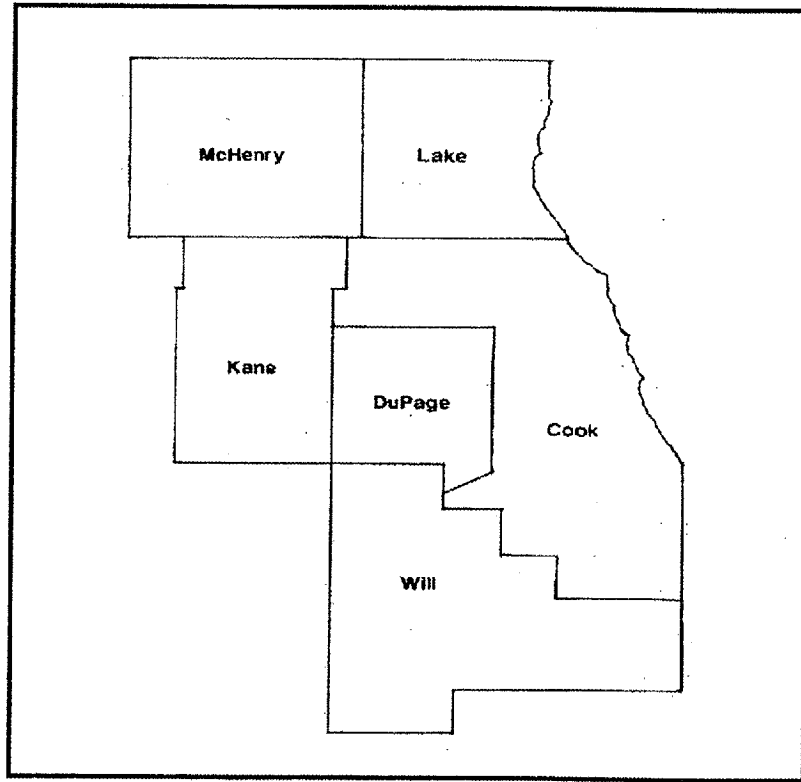
ROUTE: VARIOUS
SECTION: 2006-035 LS
LANDSCAPE REPAIR AND RENOVATION
VARIOUS COUNTIES
JOB NO.: C-91-022-07



LOCATION OF IMPROVEMENT INDICATED THUS:

FOR INDEX OF SHEETS SEE PAGE 2

IMPROVEMENT IS IN VARIOUS
LOCATIONS WITHIN DISTRICT
ONE



STATE OF ILLINOIS
DEPARTMENT OF TRANSPORTATION
DIVISION OF HIGHWAYS
SUBMITTED: Aug. 21 2006
Trane O'Keefe
DEPUTY DIRECTOR OF HIGHWAYS, REGION ENGINEER
October 13 2006
Mike Hine
ENGINEER OF DESIGN AND ENVIRONMENT
October 13 2006
Milton R. Sees P.E.
DIRECTOR OF HIGHWAYS, CHIEF ENGINEER

PRINTED BY THE AUTHORITY
OF THE STATE OF ILLINOIS

J.U.L.I.E.: JOINT UTILITY LOCATION
INFORMATION FOR EXCAVATION
(800) 892-0123

Contract 60B91

DISTRICT ONE BUREAU OF MAINTENANCE: J. STUMPNER
MAINTENANCE LANDSCAPE DESIGNER: R. WANNER / M. DEL ROSARIO (847) 705-4171

ROUTE	SECTION	COUNTY	TOTAL SHEETS	SHEET NUMBER
VARIOUS	2006-035 LS	VARIOUS	27	2

CONTRACT 60B91

INDEX OF SHEETS

STATE STANDARDS

1	TITLE SHEET	701001-01	701006-02
2	INDEX OF SHEETS, STATE STANDARDS AND GENERAL NOTES	701101-01	701311-02
3-4	SUMMARY OF QUANTITIES	702001-05	701400-02
5	SAMPLE WORK ORDER		701406-04
6	LOCATION SUMMARY		701106-01
7-26	LAYOUT PLAN SHEETS		
27	TC 17 TRAFFIC CONTROL DETAILS FOR FREEWAY SHOULDER CLOSURES PARTIAL RAMP CLOSURES		

GENERAL NOTES

FOR ARTERIALS THE CONTRACTOR SHALL CONTACT THE DISTRICT ONE TRAFFIC CONTROL SUPERVISOR AT (847) 705-4470 A MINIMUM OF 72 HOURS IN ADVANCE OF BEGINNING WORK.

BEFORE STARTING ANY EXCAVATION THE CONTRACTOR SHALL CALL THE STATE ELECTRICAL MAINTENANCE CONTRACTOR AT (773) 287-7600, EXTENSION 601, FOR FIELD LOCATIONS OF BURIED CABLE.

THE COST OF REMOVING AND DISPOSING DAMAGED TREES IN THIS CONTRACT SHALL BE INCLUDED IN THE CONTRACT UNIT PRICES FOR THE REPLACEMENT TREES.

ILLINOIS DEPARTMENT OF TRANSPORTATION

LANDSCAPE REPAIR
INDEX OF SHEETS
GENERAL NOTES
STATE STANDARDS

ROUTE	SECTION	COUNTY	TOTAL SHEETS	SHEET NUMBER
VARIOUS	2006-035 LS	VARIOUS	27	3

URBAN

CONTRACT 60B91

PAY ITEM	DESCRIPTION	UNIT	Y003 100% STATE TOTAL	MCHD FUND	CONTRACT MAINT FUND
D2002490	EVERGREEN, PINUS HELDREICHII VAR. LEUCODERMIS (BOSNIAN PINE), 5' BALLED & BURLAPPED	EACH	10	0	10
D2005492	EVERGREEN, PINUS KORAIENSIS (KOREAN PINE), 5' HEIGHT, BALLED & BURLAPPED	EACH	10	0	10
X0325603	PORTABLE DRIP IRRIGATION SYSTEM	EACH	80	0	80
21101615	TOPSOIL FURNISH AND PLACE, 4"	SQ YD	7260	3630	3630
25000210	SEEDING, CLASS 2A	ACRE	1.5	0.75	0.75
25000400	NITROGEN FERTILIZER NUTRIENT	POUND	140	70	70
25000500	PHOSPHORUS FERTILIZER NUTRIENT	POUND	140	70	70
25000600	POTASSIUM FERTILIZER NUTRIENT	POUND	140	70	70
25003312	INTERSEEDING, CLASS 4A	ACRE	12	0	12
25003323	INTERSEEDING, CLASS 5A (MODIFIED)	ACRE	16	0	16
25100630	EROSION CONTROL BLANKET	SQ YD	7260	3630	3630
25200110	SODDING, SALT TOLERANT	SQ YD	600	300	300
25200200	SUPPLEMENTAL WATERING	UNIT	10.5	0.5	10
A2000310	TREE, ACER MIYABEI MORTON (STATE STREET MIYABE), 1-1/4" CALIPER, BALLED AND BURLAPPED	EACH	10	0	10
A2004720	TREE, GLEDITSIA TRIACANTHOS INERMIS SHADEMASTER (SHADEMASTER THORNLESS COMMON HONEYLOCUST), 2-1/2" CALIPER, BALLED AND BURLAPPED	EACH	17	1	16
A2004816	TREE, GLEDITSIA TRIACANTHOS INERMIS SKYLINE (SKYLINE THORNLESS COMMON HONEYLOCUST), 2" CALIPER, BALLED AND BURLAPPED	EACH	20	0	20
A2005016	TREE, GYMNOCLADUS DIOICUS (KENTUCKY COFFEETREE), 2" CALIPER, BALLED AND BURLAPPED	EACH	40	8	32
A2006614	TREE, QUERCUS IMBRICARIA (SHINGLE OAK), 1 3/4" CALIPER, BALLED AND BURLAPPED	EACH	13	3	10
A2006714	TREE, QUERCUS MACROCARPA (BUR OAK), 1 3/4" CALIPER, BALLED AND BURLAPPED	EACH	22	0	22
A2007916	TREE, TILIA AMERICANA REDMOND (REDMOND AMERICAN LINDEN), 2" CALIPER, BALLED AND BURLAPPED	EACH	5	0	5
B2001666	TREE, CRATAEGUS CRUSGALLI INERMIS (THORNLESS COCKSPUR HAWTHORN), 6' HEIGHT, SHRUB FORM, BALLED AND BURLAPPED	EACH	11	1	10
B2002914	TREE, MALUS BEVERLY (BEVERLY CRABAPPLE), 1 3/4" CALIPER, TREE FORM, BALLED AND BURLAPPED	EACH	14	0	14
B2003314	TREE, MALUS DONALD WYMAN (DONALD WYMAN CRABAPPLE), 1 3/4" CALIPER, TREE FORM, BALLED AND BURLAPPED	EACH	1	0	1

ILLINOIS DEPARTMENT OF TRANSPORTATION
SUMMARY OF QUANTITIES

Rev.

ROUTE	SECTION	COUNTY	TOTAL SHEETS	SHEET NUMBER
VARIOUS	2006-035 LS	VARIOUS	27	4

CONTRACT 60B91

PAY ITEM	DESCRIPTION	UNIT	URBAN Y003 100% STATE TOTAL	MCHD FUND	CONTRACT MAINT FUND
B2005414	TREE, PRUNUS VIRGINIANA SCHUBERT (SCHUBERT CHOKEBERRY), 1 3/4" CALIPER, TREE FORM, BALLED AND BURLAPPED	EACH	5	0	5
B2005714	TREE, PYRUS CALLERYANA CHANTICLEER (CHANTICLEER CALLERY PEAR), 1 3/4" CALIPER, TREE FORM, BALLED AND BURLAPPED	EACH	2	0	2
B2006112	TREE, SYRINGA PEKINENSIS MORTON (CHINA SNOW PEKING LILAC), 1 1/2" CALIPER, TREE FORM, BALLED AND BURLAPPED	EACH	25	0	25
B2006214	TREE, SYRINGA RETICULATA (JAPANESE TREE LILAC), 1 3/4" CALIPER, TREE FORM, BALLED AND BURLAPPED	EACH	15	0	15
C2005824	SHRUB, RHUS AROMATICA GRO-LOW (GRO-LOW FRAGRANT SUMAC), 2' WIDTH, BALLED AND BURLAPPED	EACH	12	0	12
C2006136	SHRUB, RHUS TYPHINA LACINIATA (CUTLEAF STAGHORN SUMAC), 3' HEIGHT, BALLED AND BURLAPPED	EACH	5	5	0
C2007224	SHRUB, ROSA KNOCKOUT (KNOCKOUT ROSE), 24" HEIGHT, CONTAINER	EACH	50	0	50
C2017136	SHRUB, VIBURNUM DENTATUM 'AUTUMN JAZZ' (AUTUMN JAZZ VIBURNUM), 3' HEIGHT, BALLED AND BURLAPPED	EACH	30	0	30
D2002160	EVERGREEN, PICEA PUNGENS (COLORADO SPRUCE), 5' HEIGHT, BALLED AND BURLAPPED	EACH	4	0	4
D2002760	EVERGREEN, PINUS NIGRA (AUSTRIAN PINE), 5' HEIGHT, BALLED AND BURLAPPED	EACH	10	0	10
D2003336	EVERGREEN, TAXUS CUSPIDATA CAPITATA (UPRIGHT JAPANESE YEW), 3' HEIGHT, BALLED AND BURLAPPED	EACH	25	0	25
D2003524	EVERGREEN, TAXUS X MEDIA DENSIFORMIS (DENSE ANGLOJAPANESE YEW), 2' WIDTH, BALLED AND BURLAPPED	EACH	15	0	15
K0026700	TREE CARE	EACH	300	0	300
K0026810	SHRUB CARE	EACH	300	0	300
K0026850	PERENNIAL PLANT CARE	SQ YD	2500	0	2500
K1005481	SHREDDED BARK MULCH 3"	SQ YD	2132	0	2132
X0301407	PERENNIAL PLANTS, GALLON POT	UNIT	26	0	26
X0322856	WEED CONTROL, NON-SELECTIVE AND NON-RESIDUAL	GALLON	3.5	0	3.5
X0322859	WEED CONTROL, PRE-EMERGENT GRANULAR HERBICIDE	POUND	125	25	100
X0324097	COARSE SAND PLACEMENT, 2"	SQ YD	600	0	600
X0325604	WEED CONTROL, PRE-EMERGENT HERBICIDE	GALLON	3	0	3
B2003270	TREE, MALUS DOLGO (DOLGO CRABAPPLE), 5' HEIGHT, MULTI-STEMMED, BALLED AND BURLAPPED	EACH	13	3	10
C2006626	SHRUB, ROSA BLUSHING KNOCKOUT (BLUSHING KNOCKOUT), 18" HEIGHT, CONTAINER	EACH	50	0	50

ILLINOIS DEPARTMENT OF TRANSPORTATION
SUMMARY OF QUANTITIES
 Rev.

ROUTE	SECTION	COUNTY	TOTAL SHEETS	SHEET NUMBER
VARIOUS	2006-035 LS	VARIOUS	27	5

CONTRACT 60B91



Landscaping Repair and Rehabilitation Work Order

Contract #: _____ W.O. Number: _____
 Date: _____ Claim Number: _____
 Route: _____ Location: _____

Item	Unit	Quantity	Item	Unit	Quantity

Special Instruction:

SAMPLE WORK ORDER
(NOT TRUE SIZE)

Prepared By: _____ Date repair work completed: _____

 Contractor Resident Engineer

MNT-LandScapeRepairAndRehabWorkOrder
 Rev(11/05)

ILLINOIS DEPARTMENT OF TRANSPORTATION

SAMPLE WORK ORDER

ROUTE	SECTION	COUNTY	TOTAL SHEETS	SHEET NUMBER
VARIOUS	2006-035LS	VARIOUS	27	6

CONTRACT 60B91

LOCATION SUMMARY

COUNTY	CITY/TOWN	CLAIM #	SHEET #	GENERAL LOCATION
LAKE	WADSWORTH	N/A	7	I-94 WEST / US 41 AT RUSSELL RD.
LAKE	CUBA TOWNSHIP	N/A	8	IL 59 @ CUBA RD.
COOK	ARLINGTON HEIGHTS	721736 721743 722685	9	IL 53: RAND RD. EXIT RAMP AND US 12 (RAND RD.)
COOK	SKOKIE	722376	10	I-94 WEST (EDENS EXPY) AT NILES CENTER RD.
COOK	CHICAGO	722149	11	I-90 EAST (JFK IB) BEFORE FOSTER AVE.
COOK	CHICAGO	N/A	12	I-90 WEST @ DIVERSEY EXIT RAMP AND @ BELMONT EXIT RAMP
COOK	CHICAGO	N/A	13	ARCHER AVE. @ THE CTA STATION AND @ THROOP ST.
COOK	OAK PARK	722382	14	I-290 WEST @ IDOT COMM CENTER (E/O EAST AVE.)
COOK	McCOOK	N/A	15	IDOT STEVENSON YARD @ JOLIET RD. AND IL 171
COOK	HODGKINS	N/A	16	STEVENSON EXPY OB EXIT RAMP
COOK	PALOS PARK	N/A	17	US 45 (LAGRANGE RD.) & APPROX. 133 RD TO 132 ND STS.
COOK	TINLEY PARK	N/A	18-19	I-80 @ HARLEM AVE., SW QUADRANT
COOK	DIXMOOR	722123 722665	20	I-57 SB @ 147 TH ST ENTRANCE RAMP
COOK	COUNTRY CLUB HILLS	N/A	21	I-80 / I -57 INTERCHANGE
COOK	LYNWOOD	N/A	22	US 30 @ SAUK TRAIL
DUPAGE	ADDISON	N/A	23	I-290 @ IL 83 SW PERIMETER
WILL	JOLIET	722671	24	I-80 WB @ ENTRANCE RAMP
WILL	CHANNAHON	721738 721758	25	I-55 SB AND NORTH OF US 6
DUPAGE	WEST CHICAGO	N/A	25A	IL 59 AND IL 64
VARIOUS	VARIOUS	N/A	26	VARIOUS LOCATIONS

ILLINOIS DEPARTMENT OF TRANSPORTATION

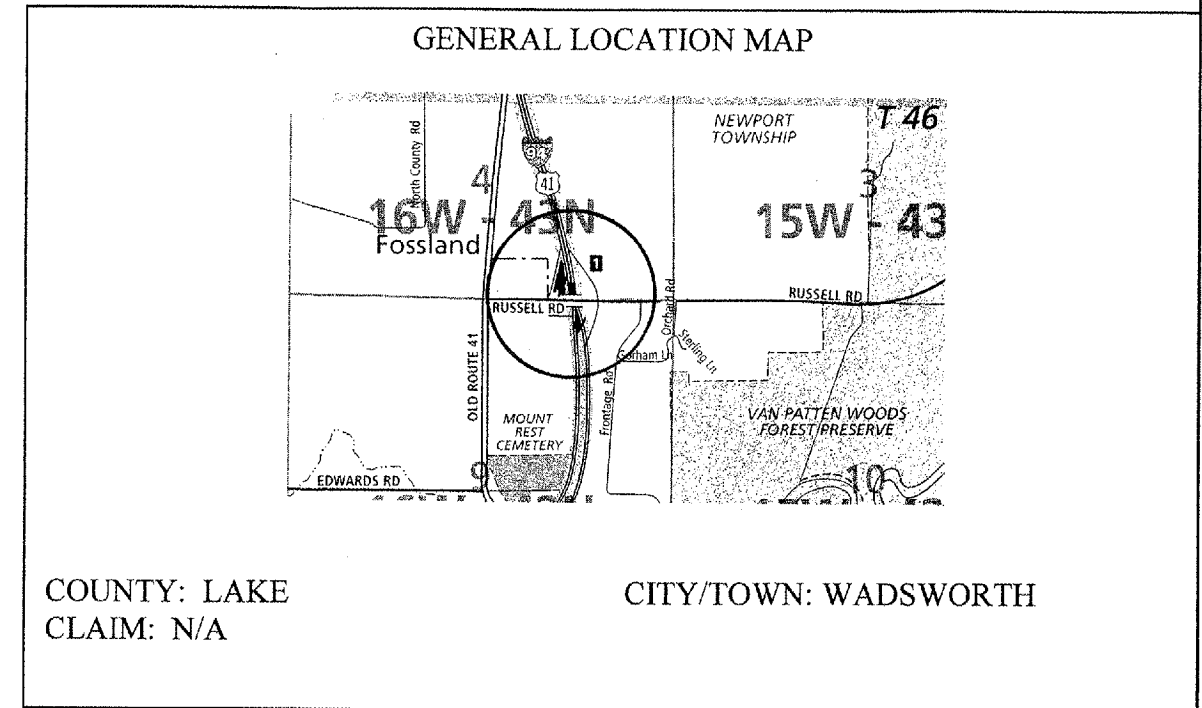
LOCATION SUMMARY

ROUTE	SECTION	COUNTY	TOTAL SHEETS	SHEET NUMBER
VARIOUS	2006-035 LS	VARIOUS	27	7

CONTRACT 60B91

SCHEDULE OF LANDSCAPE ITEMS

DESCRIPTION	QTY/UNIT
WEED CONTROL, PRE-EMERGENT HERBICIDE	0.25 GALLON
ROSA 'KNOCKOUT' KNOCKOUT ROSE	50 EACH
PERENNIAL PLANTS, GALLON POT	4.60 UNITS
<i>ANDROPOGON GERARDII</i>	0.20 UNITS
<i>ANDROPOGON SCOPARIUS</i>	0.20 UNITS
<i>ASCLEPIAS TUBEROSA</i>	0.50 UNITS
<i>BAPTISIA AUSTRALIS</i>	0.60 UNITS
<i>ECHINACEA PURPUREA 'MAGNUS'</i>	1.00 UNITS
<i>LIATRIS ASPERA</i>	0.50 UNITS
<i>PANICUM VIRGATUM 'SHENANDOAH'</i>	0.60 UNITS
<i>RUDBECKIA FULGIDA 'GOLDSTURM'</i>	1.00 UNITS
INTERSEEDING, CLASS 4A**	6 ACRES
INTERSEEDING, CLASS 5A (MODIFIED)**	6 ACRES
SHREDDED BARK MULCH	1066 SQ YD
WEED CONTROL, NON-SELECTIVE AND NON-RESIDUAL	0.25 GALLON



**NOTE: INTERSEEDING WILL BE DONE AT THREE (3) DIFFERENT AREAS WITHIN THE EXPRESSWAY INTERCHANGE.

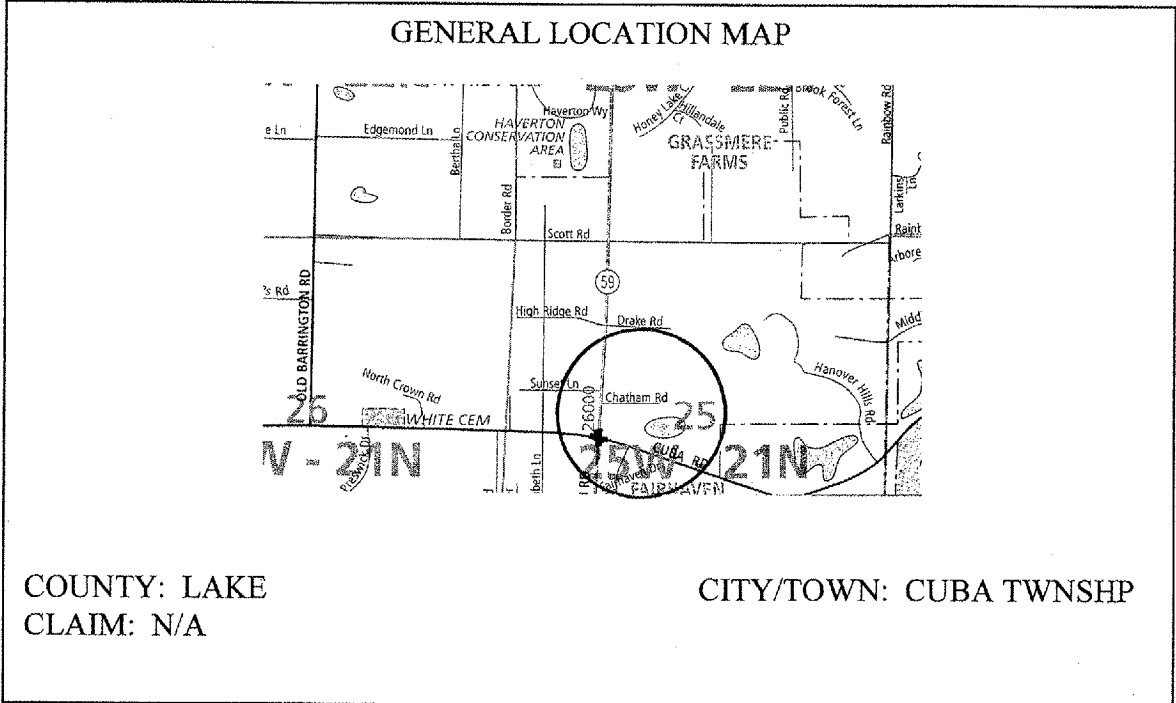
NOTIFY MELISSA DEL ROSARIO 72 HOURS PRIOR TO PLANTING AT (847) 705-4171 FOR LAYOUT.

ILLINOIS DEPARTMENT OF TRANSPORTATION
LANDSCAPE REPAIR LOCATION AND LAYOUT PLAN

ROUTE	SECTION	COUNTY	TOTAL SHEETS	SHEET NUMBER
VARIOUS	2006-035 LS	VARIOUS	27	8

CONTRACT 60B91

NOTIFY RICK WANNER 72 HOURS PRIOR TO PLANTING AT (847)705-4171 FOR LAYOUT.



SCHEDULE OF LANDSCAPE ITEMS

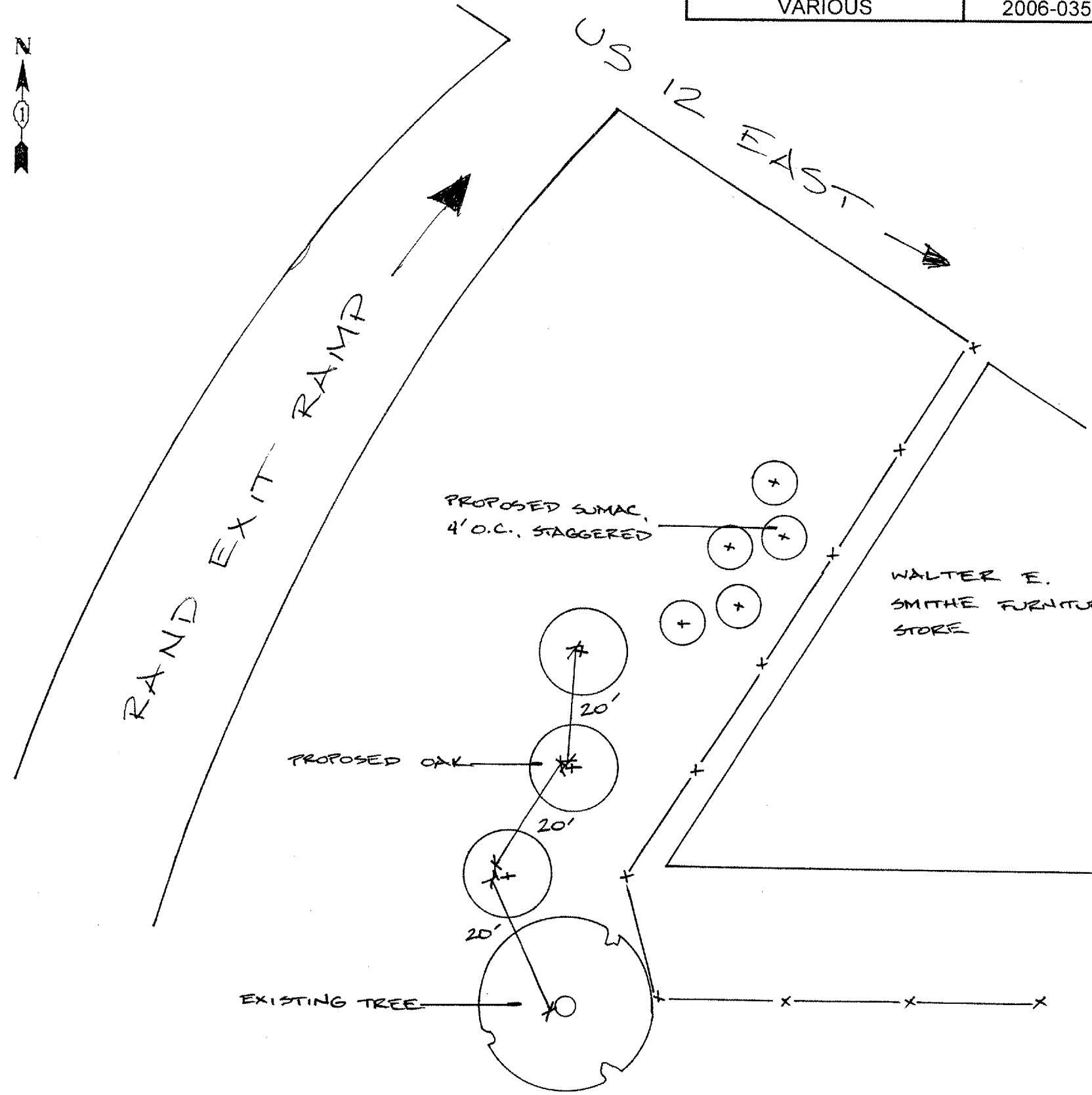
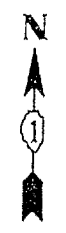
DESCRIPTION	QTY/UNIT
RHUS AROMATICA 'GRO-LOW' GRO-LOW FRAGRANT SUMAC	12 EACH
TAXUS CUSPIDATA 'CAPITATA' UPRIGHT JAPANESE YEW	25 EACH
TAXUS X MEDIA 'DENSIFORMIS' DENSE ANGLOJAPANESE YEW	15 EACH

ILLINOIS DEPARTMENT OF TRANSPORTATION

LANDSCAPE REPAIR LOCATION AND LAYOUT PLAN

ROUTE	SECTION	COUNTY	TOTAL SHEETS	SHEET NUMBER
VARIOUS	2006-035 LS	VARIOUS	27	9

CONTRACT 60B91



GENERAL LOCATION MAP

COUNTY: COOK
 CITY/TOWN: ARLINGTON HEIGHTS
 CLAIM #: 721736 721743 722685

SCHEDULE OF LANDSCAPE ITEMS

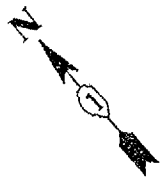
DESCRIPTION	QTY/UNIT
QUERCUS IMBRICARIA SHINGLE OAK	3 EACH
RHUS TYPHINA LACINIATA CUTLEAF STAGHORN SUMAC	5 EACH

ILLINOIS DEPARTMENT OF TRANSPORTATION
 LANDSCAPE REPAIR LOCATION AND
 LAYOUT PLAN

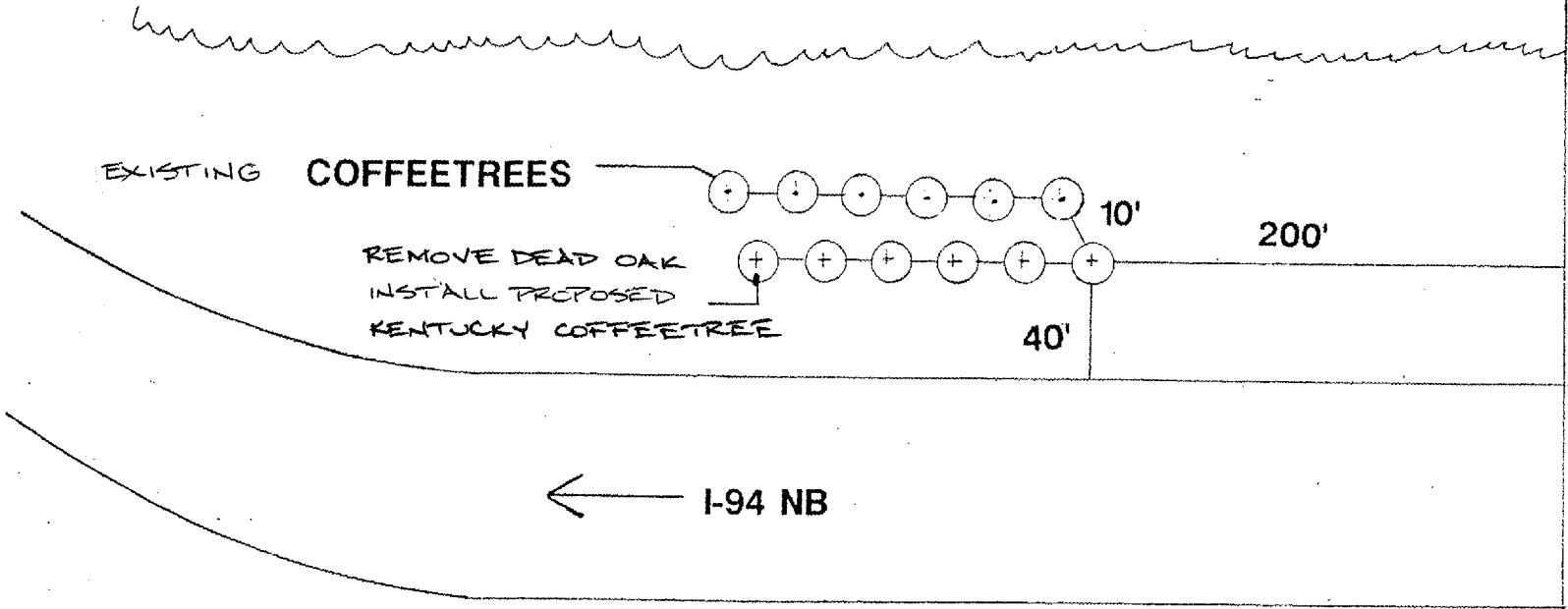
NOT DRAWN TO SCALE

ROUTE	SECTION	COUNTY	TOTAL SHEETS	SHEET NUMBER
VARIOUS	2006-035 LS	VARIOUS	27	10

CONTRACT 60B91



EXISTING VEGETATION



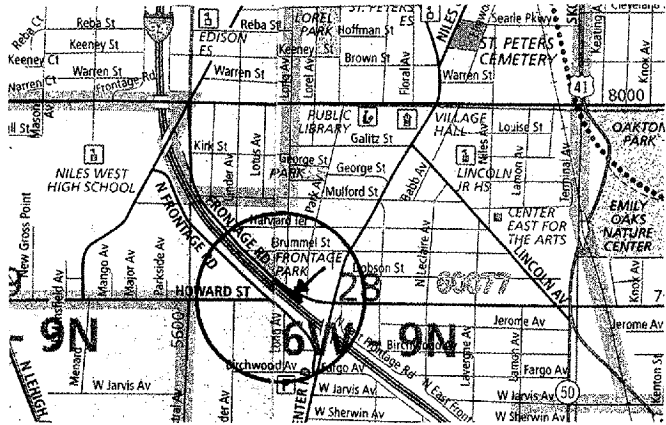
LP
39
11

FD3

NOT DRAWN TO SCALE

NILES CENTER RD

GENERAL LOCATION MAP



COUNTY: COOK
CLAIM #: 722376

CITY/TOWN: SKOKIE

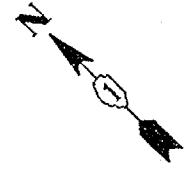
SCHEDULE OF LANDSCAPE ITEMS

DESCRIPTION	QTY/UNIT
GYMNOCLADUS DIOICUS	
KENTUCKY COFFETREE	1 EACH

ILLINOIS DEPARTMENT OF TRANSPORTATION
LANDSCAPE REPAIR LOCATION AND LAYOUT PLAN

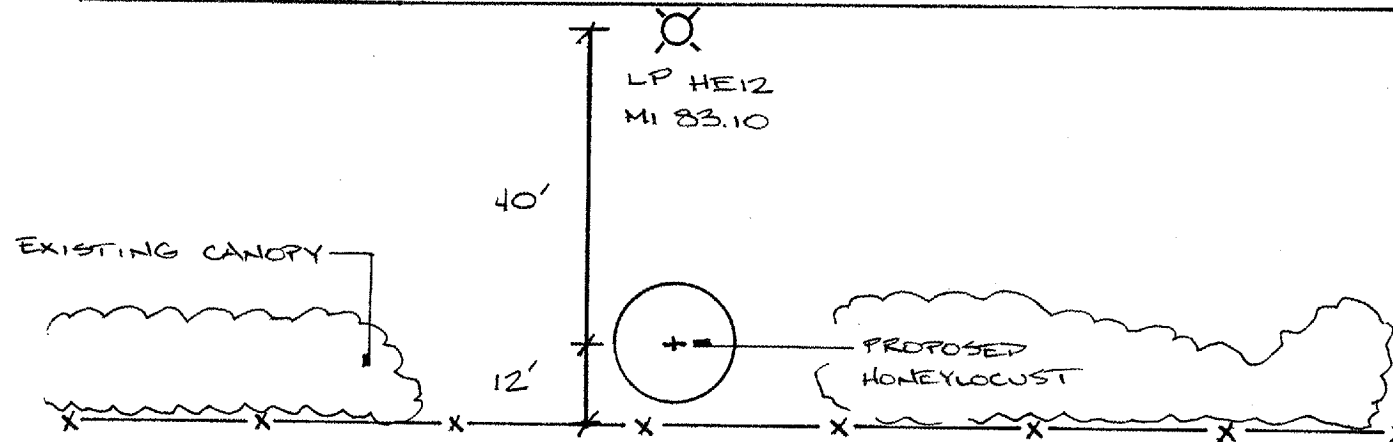
ROUTE	SECTION	COUNTY	TOTAL SHEETS	SHEET NUMBER
VARIOUS	2006-035 LS	VARIOUS	27	11

CONTRACT 60B91



I-90 JFK INBOUND →

FOSTER AVENUE



GENERAL LOCATION MAP

COUNTY: COOK
CLAIM #: 722149

CITY/TOWN: CHICAGO

SCHEDULE OF LANDSCAPE ITEMS

DESCRIPTION	QTY/UNIT
GLEDITSIA TRIACANTHOS VAR. INERMIS 'SHADEMASTER'	
SHADEMASTER HONEYLOCUST	1 EACH

NOT DRAWN TO SCALE

ILLINOIS DEPARTMENT OF TRANSPORTATION
LANDSCAPE REPAIR LOCATION AND
LAYOUT PLAN

ROUTE	SECTION	COUNTY	TOTAL SHEETS	SHEET NUMBER
VARIOUS	2006-035 LS	VARIOUS	27	12

CONTRACT 60B91

GENERAL LOCATION MAP



COUNTY: COOK
CLAIM: N/A

CITY/TOWN: CHICAGO

NOTIFY MELISSA DEL ROSARIO 72 HOURS PRIOR TO PLANTING AT (847) 705-4171 FOR LAYOUT. LOCATIONS ARE ALONG THE OUTBOUND KENNEDY (I-90 WEST).

SCHEDULE OF LANDSCAPE ITEMS

DESCRIPTION	QTY/UNIT
PORTABLE DRIP IRRIGATION SYSTEM	20 EACH
PINUS HELDREICHII VAR. LEUCODERMIS BOSNIAN PINE	10 EACH
PINUS KORAIENSIS KOREAN PINE	10 EACH

ILLINOIS DEPARTMENT OF TRANSPORTATION
LANDSCAPE REPAIR LOCATION AND LAYOUT PLAN

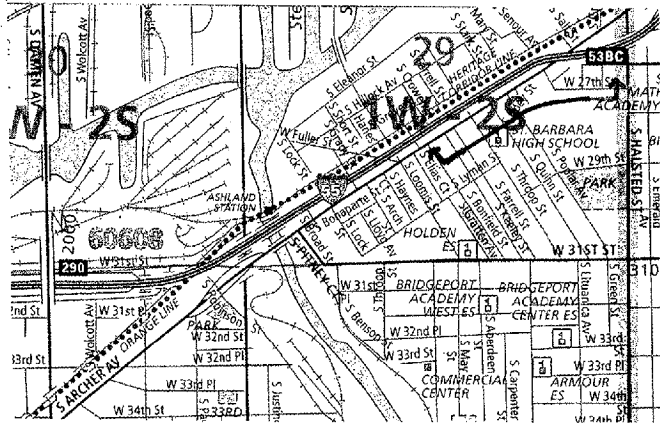
ROUTE	SECTION	COUNTY	TOTAL SHEETS	SHEET NUMBER
VARIOUS	2006-035 LS	VARIOUS	27	13

CONTRACT 60B91

SCHEDULE OF LANDSCAPE ITEMS

DESCRIPTION	QTY/UNIT
PORTABLE DRIP IRRIGATION SYSTEM	60 EACH
ACER MIYABEI 'MORTON' STATE STREET MIYABE MAPLE	10 EACH
CRATAEGUS CRUSGALLI VAR. INERMIS THORNLESS COCKSPUR HAWTHORN	10 EACH
MALUS 'DOLGO' DOLGO CRABAPPLE	10 EACH
QUERCUS IMBRICARIA SHINGLE OAK	10 EACH
QUERCUS MACROCARPA BUR OAK	10 EACH
SYRINGA PEKINENSIS 'MORTON' CHINA SNOW PEKING LILAC	10 EACH
PERENNIAL PLANT CARE	2500 SQ. YD.
SHRUB CARE	300 EACH
TREE CARE	300 EACH
WEED CONTROL, PRE-EMERGENT HERBICIDE	0.5 GALLON

GENERAL LOCATION MAP



COUNTY: COOK
CLAIM: N/A

CITY/TOWN: CHICAGO
(ALONG ARCHER AVENUE-
@ THE CTA STATION & @
THROOP ST.)

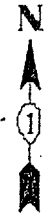
NOTIFY FABIOLA QUIROZ 72 HOURS PRIOR TO PLANTING AT (847) 705-4171 FOR LAYOUT.

ILLINOIS DEPARTMENT OF TRANSPORTATION

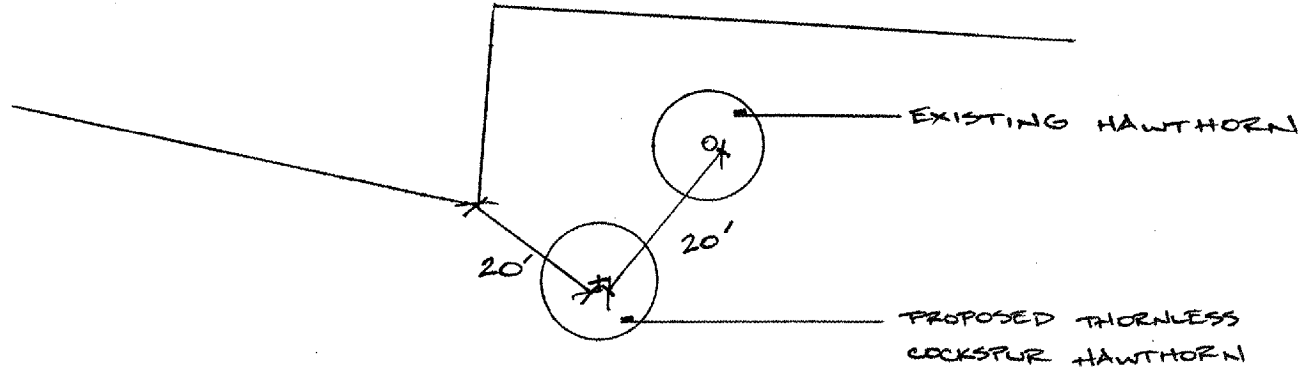
LANDSCAPE REPAIR LOCATION AND LAYOUT PLAN

ROUTE	SECTION	COUNTY	TOTAL SHEETS	SHEET NUMBER
VARIOUS	2006-035 LS	VARIOUS	27	14

CONTRACT 60B91



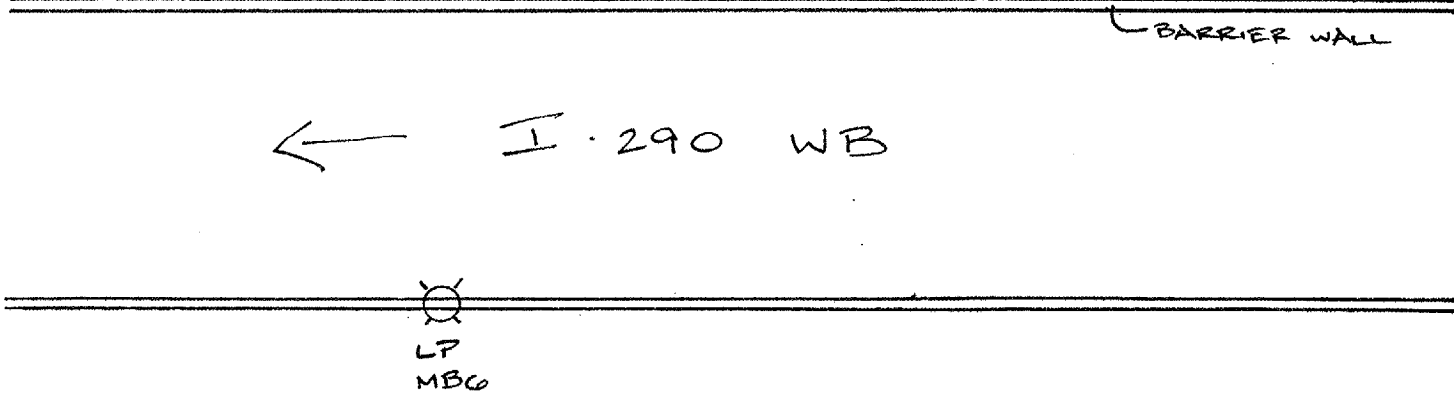
IDOT COMM CENTER
(OAK PARK)



GENERAL LOCATION MAP

COUNTY: COOK
CLAIM #: 722382

CITY/TOWN: OAK PARK



SCHEDULE OF LANDSCAPE ITEMS

DESCRIPTION	QTY/UNIT
CRATAEGUS CRUSGALLI VAR. INERMIS	
THORNLESS COCKSPUR HAWTHORN	1 EACH

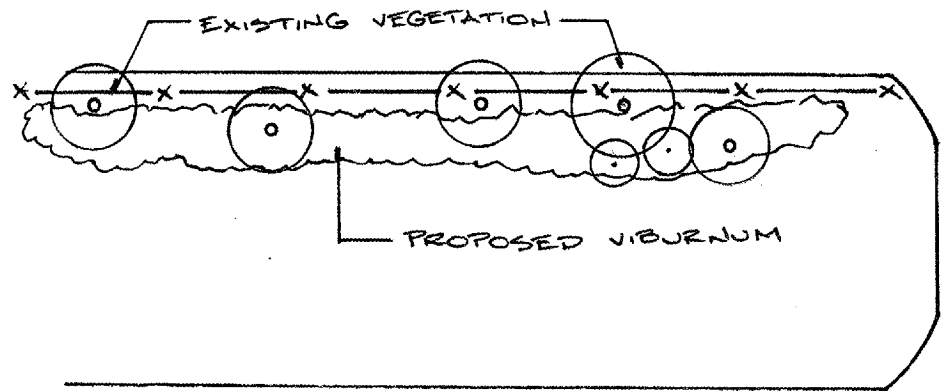
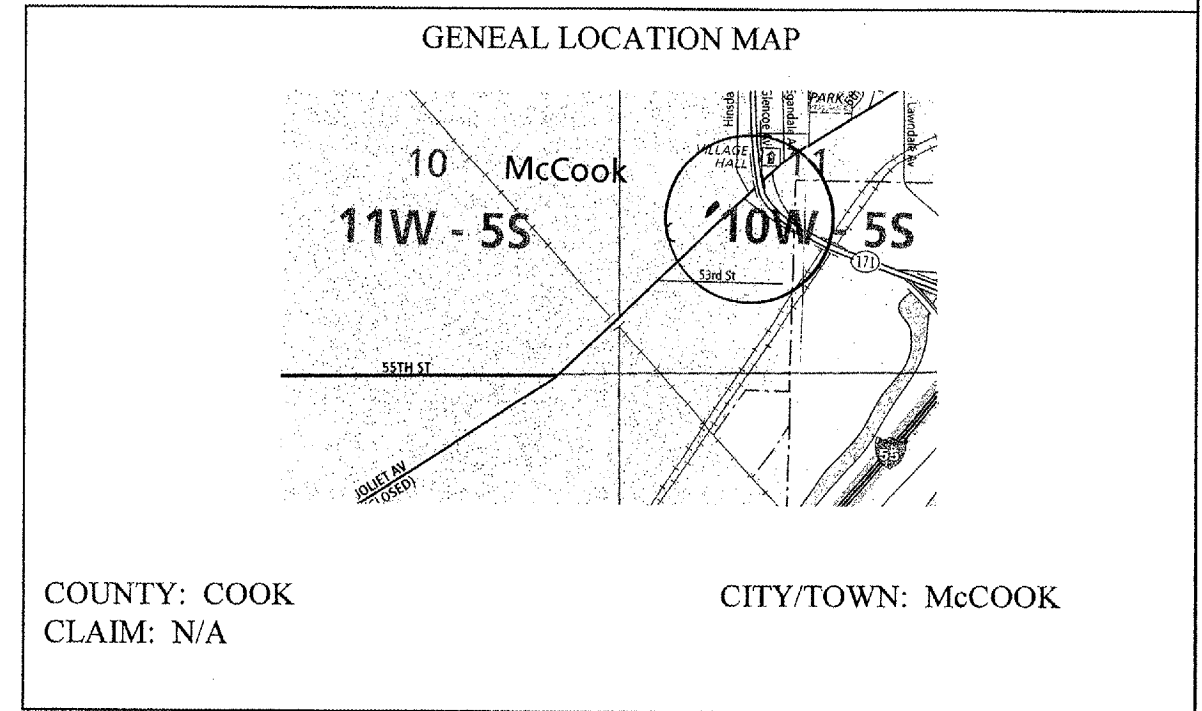
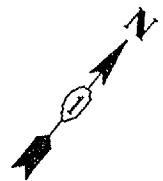
NOT DRAWN TO SCALE

ILLINOIS DEPARTMENT OF TRANSPORTATION
LANDSCAPE REPAIR LOCATION AND
LAYOUT PLAN

ROUTE	SECTION	COUNTY	TOTAL SHEETS	SHEET NUMBER
VARIOUS	2006-035 LS	VARIOUS	27	15

CONTRACT 60B91

STEVENSON YARD
8630 JOLIET RD.
MCCOOK, IL 60525
COOK CTY.



SCHEDULE OF LANDSCAPE ITEMS

DESCRIPTION	QTY/UNIT
VIBURNUM DENTATUM 'AUTUMN JAZZ'	
AUTUMN JAZZ VIBURNUM	30 EACH

NOT DRAWN TO SCALE

NOTIFY FABIOLA QUIROZ 72 HOURS PRIOR TO PLANTING AT (847)705-4171 FOR LAYOUT. THE ABOVE PLAN SHOWS ONLY A GENERAL LOCATION OF THE AREA TO BE PLANTED.

ILLINOIS DEPARTMENT OF TRANSPORTATION
LANDSCAPE REPAIR LOCATION AND LAYOUT PLAN

ROUTE	SECTION	COUNTY	TOTAL SHEETS	SHEET NUMBER
VARIOUS	2006-035 LS	VARIOUS	27	16

CONTRACT 60B91

NOTIFY FABIOLA QUIROZ 72 HOURS PRIOR TO PLANTING AT (847) 705-4171 FOR LAYOUT.

GENERAL LOCATION MAP

COUNTY: COOK
CLAIM: N/A

CITY/TOWN: HODGKINS

SCHEDULE OF LANDSCAPE ITEMS

DESCRIPTION	QTY/UNIT
GLEDITSIA TRIACANTHOS VAR. INERMIS 'SHADEMASTER' SHADEMASTER HONEYLOCUST	5 EACH
SYRINGA PEKINENSIS 'MORTON' CHINA SNOW PEKING LILAC	5 EACH

ILLINOIS DEPARTMENT OF TRANSPORTATION

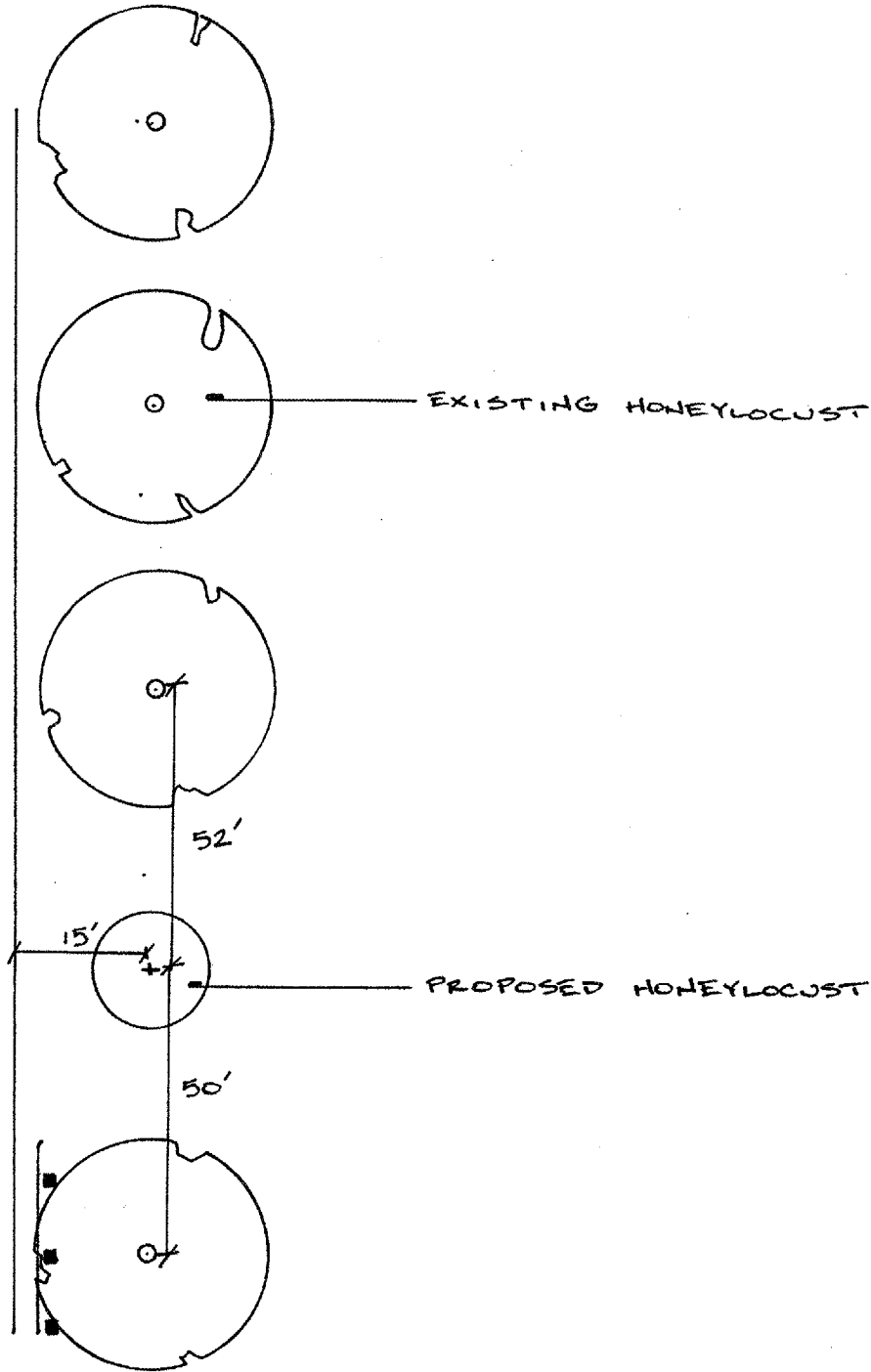
LANDSCAPE REPAIR LOCATION AND LAYOUT PLAN

ROUTE	SECTION	COUNTY	TOTAL SHEETS	SHEET NUMBER
VARIOUS	2006-035 LS	VARIOUS	27	17

CONTRACT 60B91

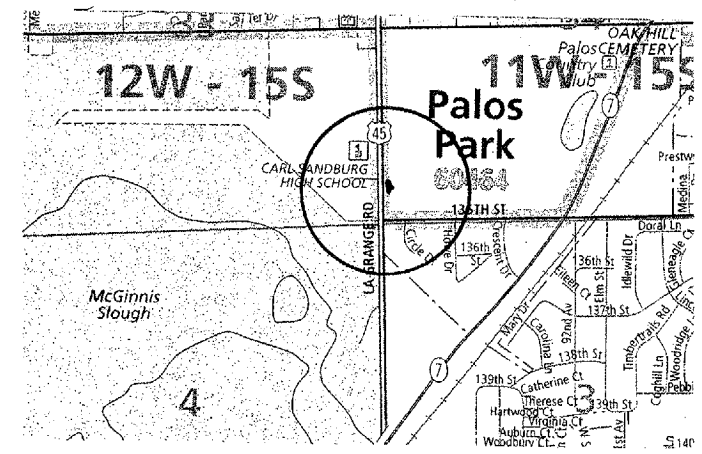


US 45 (LAGRANGE RD)



NOT DRAWN TO SCALE

GENERAL LOCATION MAP



COUNTY: COOK
CLAIM: N/A

CITY/TOWN: PALOS PARK

SCHEDULE OF LANDSCAPE ITEMS
DESCRIPTION QTY/UNIT

GLEDITSIA TRIACANTHOS VAR. INERMIS 'SHADEMASTER'	1 EACH
SHADEMASTER HONEYLOCUST	1 EACH

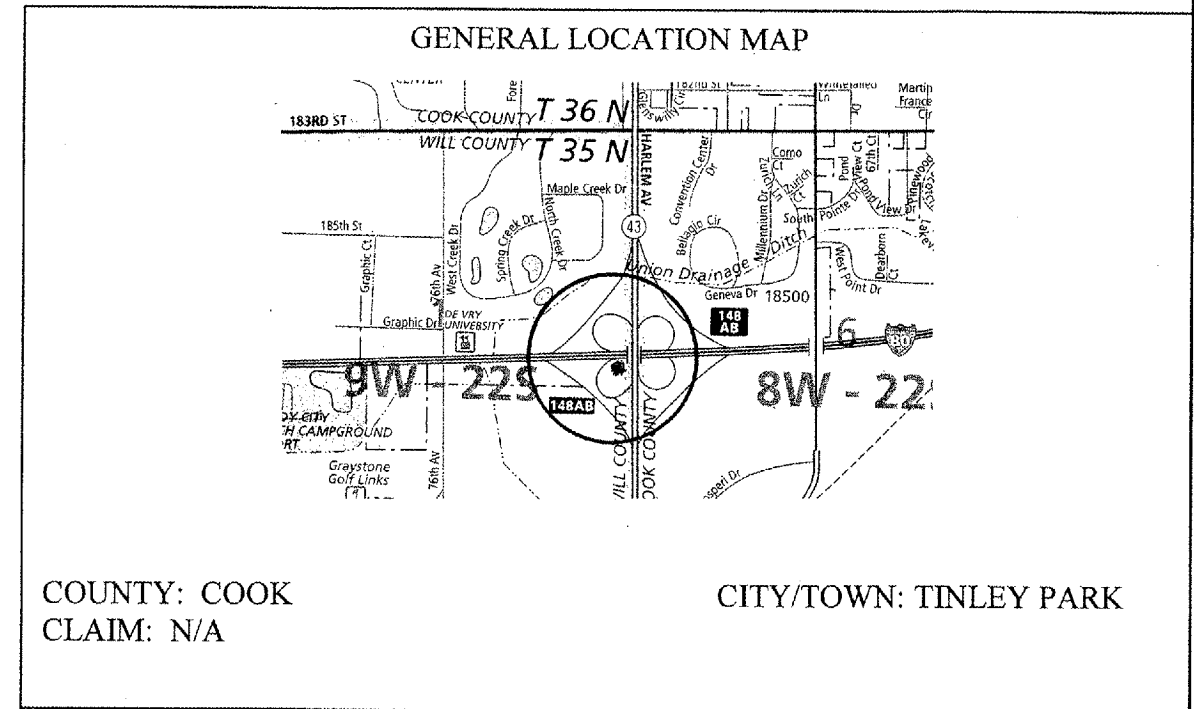
ILLINOIS DEPARTMENT OF TRANSPORTATION
LANDSCAPE REPAIR LOCATION AND LAYOUT PLAN

ROUTE	SECTION	COUNTY	TOTAL SHEETS	SHEET NUMBER
VARIOUS	2006-035 LS	VARIOUS	27	18

CONTRACT 60B91

SCHEDULE OF LANDSCAPE ITEMS

DESCRIPTION	QTY/UNIT
WEED CONTROL, NON-SELECTIVE AND NON-RESIDUAL	1 GALLON
WEED CONTROL, PRE-EMERGENT HERBICIDE	0.125 GALLON
COARSE SAND PLACEMENT 2	300 SQ. YD.
PERENNIAL PLANTS, GALLON POT	9.35 UNITS
<i>ANDROPOGON GERARDII</i>	0.60 UNITS
<i>ANDROPOGON SCOPARIUS</i>	0.75 UNITS
<i>ASCLEPIAS TUBEROSA</i>	0.50 UNITS
<i>ASTER NOVAE-ANGLIAE 'ALMA POTSCHKE'</i>	0.50 UNITS
<i>BAPTISIA AUSTRALIS</i>	0.66 UNITS
<i>ECHINACEA PURPUREA 'MAGNUS'</i>	2.00 UNITS
<i>RUDBECKIA FULGIDA 'GOLDSTURM'</i>	4.00 UNITS
<i>SILPHIUM TEREBINTHINACEUM</i>	0.34 UNITS
INTERSEEDING, CLASS 4A	2 ACRES
INTERSEEDING, CLASS 5A (MODIFIED)	2 ACRES

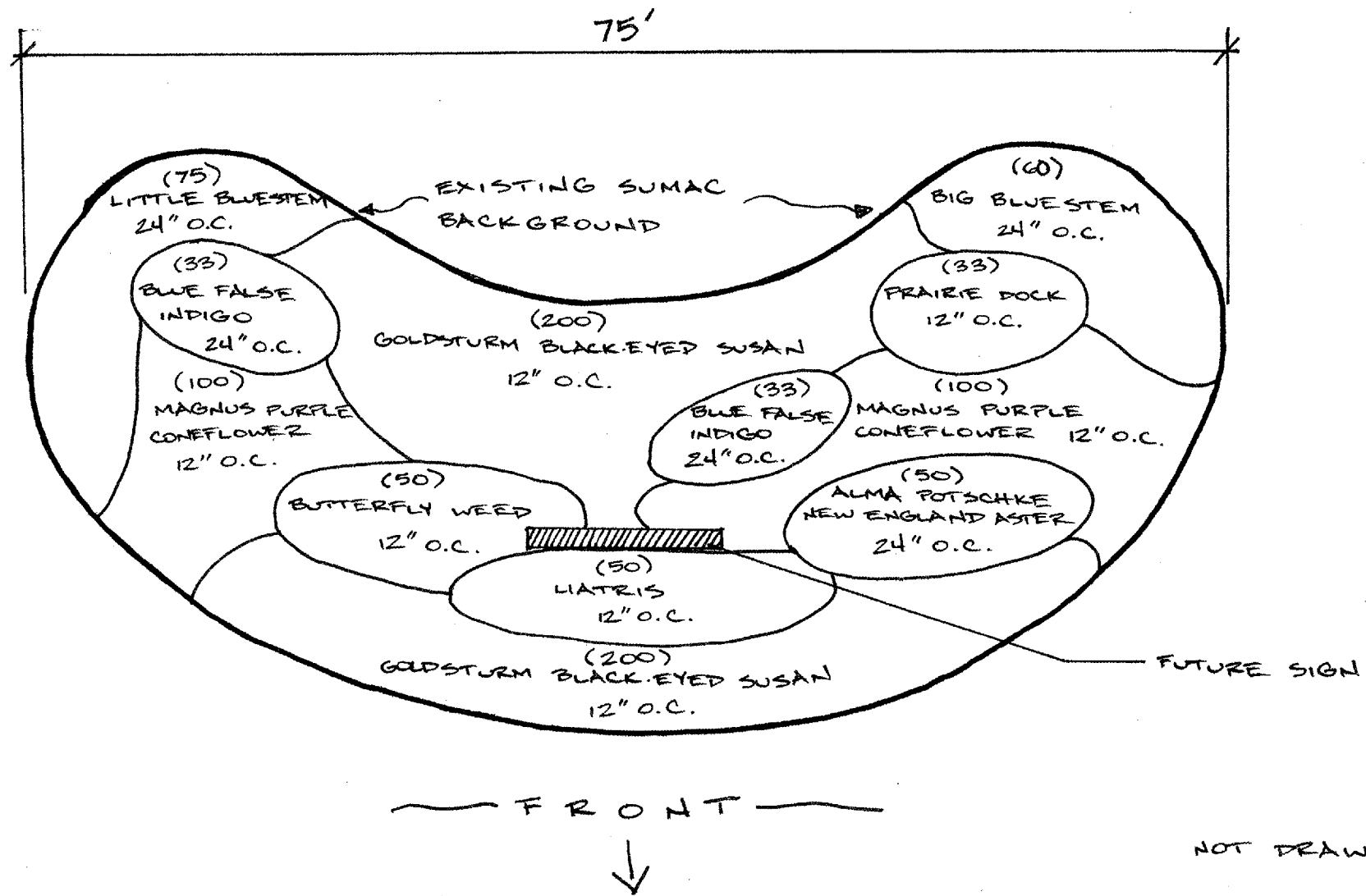


NOTIFY STEVE LIPKIE 72 HOURS PRIOR TO PLANTING AT (847) 705-4171 FOR LAYOUT. SEE NEXT PAGE FOR PLANT BED DESIGN.

ILLINOIS DEPARTMENT OF TRANSPORTATION
LANDSCAPE REPAIR LOCATION AND LAYOUT PLAN

ROUTE	SECTION	COUNTY	TOTAL SHEETS	SHEET NUMBER
VARIOUS	2006-035 LS	VARIOUS	27	19

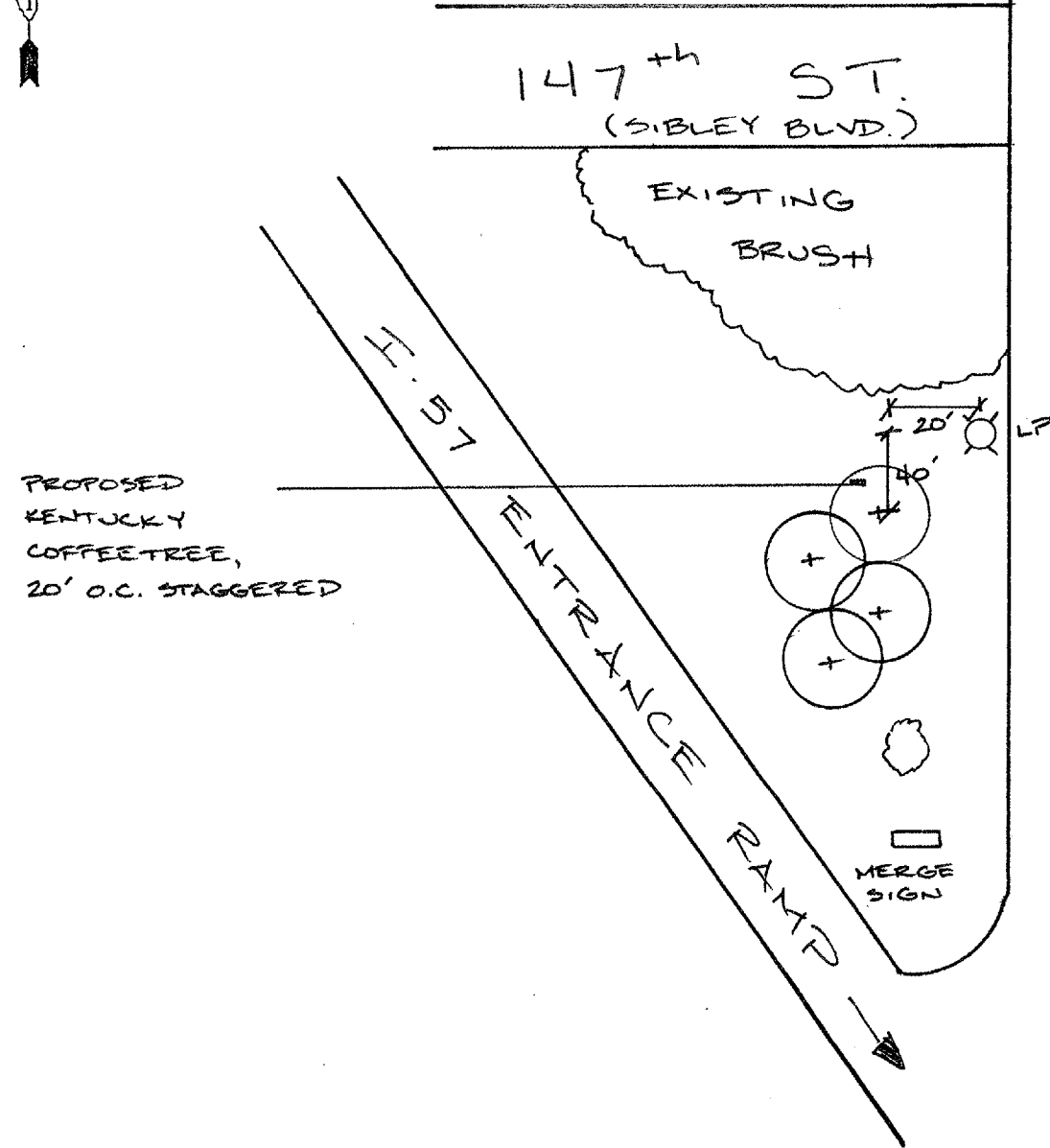
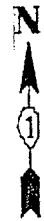
CONTRACT 60B91



ILLINOIS DEPARTMENT OF TRANSPORTATION
 LANDSCAPE REPAIR LOCATION AND
 LAYOUT PLAN

ROUTE	SECTION	COUNTY	TOTAL SHEETS	SHEET NUMBER
VARIOUS	2006-035 LS	VARIOUS	27	20

CONTRACT 60B91



H. 57 SB →

GENERAL LOCATION MAP

COUNTY: COOK
CLAIM #: 722123 722665

CITY/TOWN: DIXMOOR

SCHEDULE OF LANDSCAPE ITEMS

DESCRIPTION	QTY/UNIT
GYMNOCLADUS DIOICUS	
KENTUCKY COFFEETREE	4 EACH

NOT DRAWN TO SCALE

ILLINOIS DEPARTMENT OF TRANSPORTATION
LANDSCAPE REPAIR LOCATION AND
LAYOUT PLAN

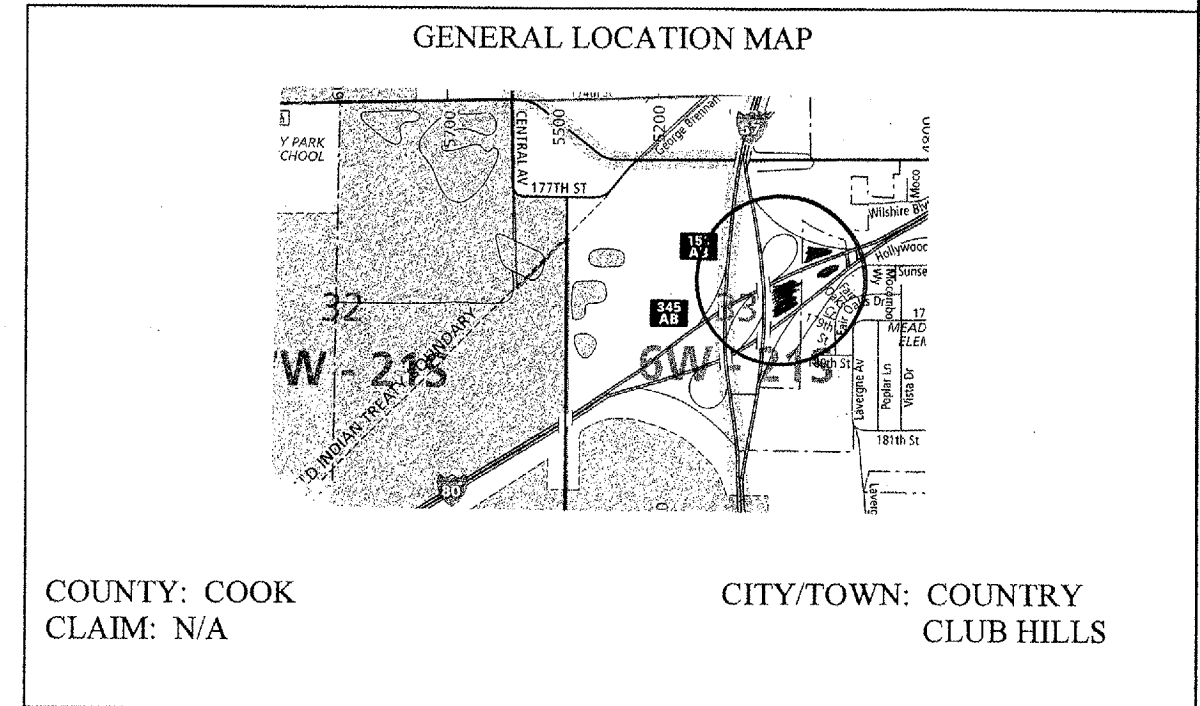
ROUTE	SECTION	COUNTY	TOTAL SHEETS	SHEET NUMBER
VARIOUS	2006-035 LS	VARIOUS	27	21

CONTRACT 60B91

SCHEDULE OF LANDSCAPE ITEMS

DESCRIPTION	QTY/UNIT
WEED CONTROL, PRE-EMERGENT HERBICIDE	0.25 GALLON
ROSA 'BLUSHING KNOCKOUT'	50 EACH
PERENNIAL PLANTS, GALLON POT	3.00 UNITS
<i>ASTER NOVAE-ANGLIAE 'ALMA POTSCHKE'</i>	0.50 UNITS
<i>ECHINACEA PURPUREA 'MAGNUS'</i>	0.50 UNITS
<i>HEMEROCALLIS 'STELLA D'ORO'</i>	0.50 UNITS
<i>LIATRIS ASPERA</i>	0.50 UNITS
<i>RUDBECKIA FULGIDA 'GOLDSTURM'</i>	0.50 UNITS
<i>SILPHIUM LACINIATUM</i>	0.50 UNITS
INTERSEEDING, CLASS 4A**	4 ACRES
INTERSEEDING, CLASS 5A (MODIFIED)**	8 ACRES
SHREDDED BARK MULCH	1066 SQ YD

**NOTE: INTERSEEDING WILL BE DONE AT TWO (2) DIFFERENT AREAS WITHIN THE EXPRESSWAY INTERCHANGE.

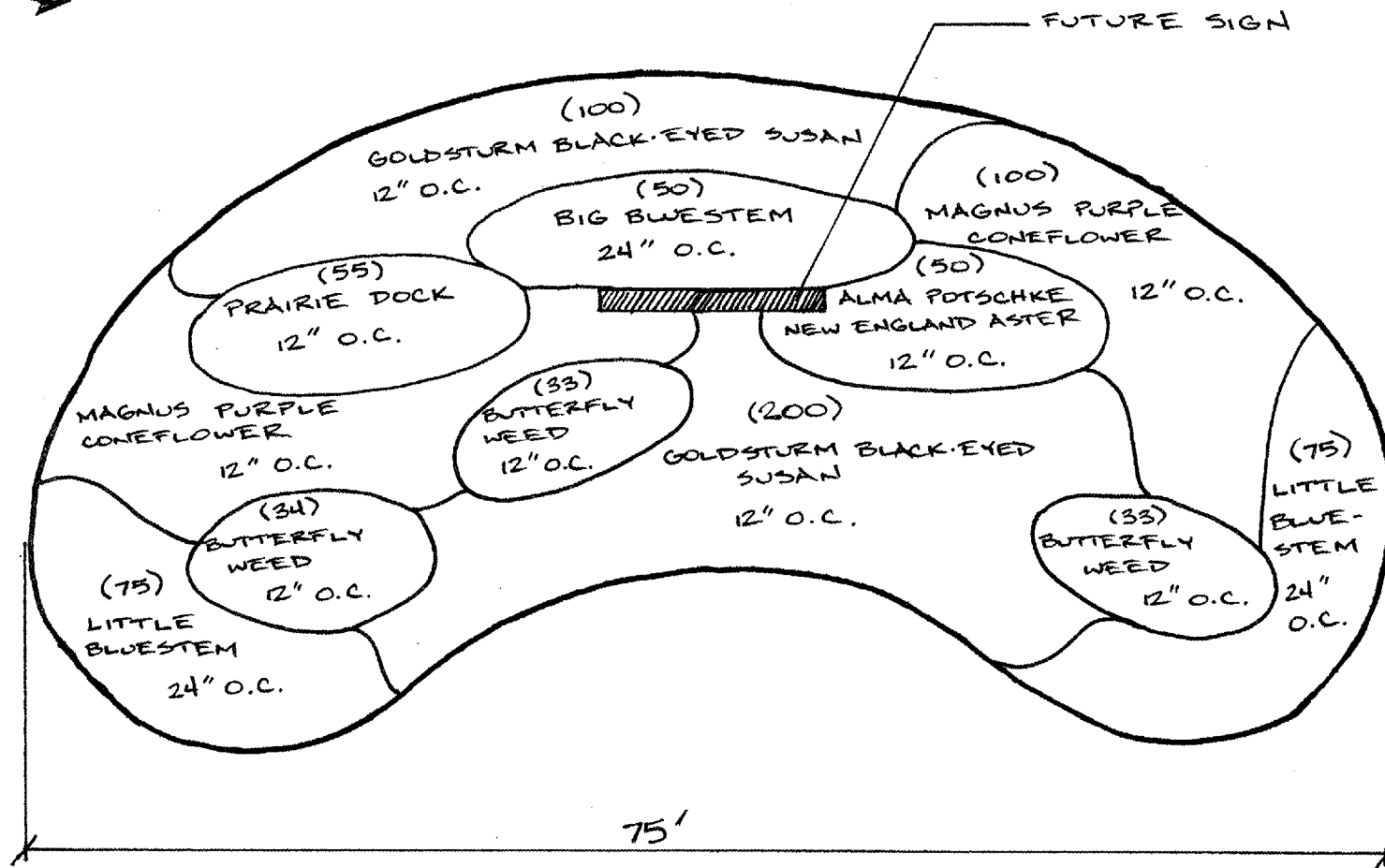
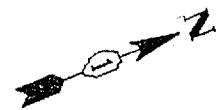


NOTIFY FABIOLA QUIROZ 72 HOURS PRIOR TO PLANTING AT (847) 705-4171 FOR LAYOUT.

ILLINOIS DEPARTMENT OF TRANSPORTATION
LANDSCAPE REPAIR LOCATION AND LAYOUT PLAN

ROUTE	SECTION	COUNTY	TOTAL SHEETS	SHEET NUMBER
VARIOUS	2006-035 LS	VARIOUS	27	22

CONTRACT 60B91



FRONT
↓

NOT DRAWN TO SCALE

NOTIFY STEVE LIPKIE 72 HOURS PRIOR TO PLANTING AT (847) 705-4171 FOR LAYOUT.

GENERAL LOCATION MAP

COUNTY: COOK
CLAIM: N/A

CITY/TOWN: LYNWOOD

SCHEDULE OF LANDSCAPE ITEMS

DESCRIPTION	QTY/UNIT
WEED CONTROL, NON-SELECTIVE AND NON-RESIDUAL	1 GALLON
WEED CONTROL, PRE-EMERGENT HERBICIDE	0.25 GALLON
COARSE SAND PLACEMENT 2	300 SQ. YD.
PERENNIAL PLANTS, GALLON POT	9.05 UNITS
<i>ANDROPOGON GERARDII</i>	0.50 UNITS
<i>ANDROPOGON SCOPARIUS</i>	1.50 UNITS
<i>ASCLEPIAS TUBEROSA</i>	1.00 UNITS
<i>ASTER NOVAE-ANGLIAE 'ALMA POTSCHKE'</i>	0.50 UNITS
<i>ECHINACEA PURPUREA 'MAGNUS'</i>	2.00 UNITS
<i>RUDBECKIA FULGIDA 'GOLDSTURM'</i>	3.00 UNITS
<i>SILPHIUM TEREBINTHINACEUM</i>	0.55 UNITS

ILLINOIS DEPARTMENT OF TRANSPORTATION
LANDSCAPE REPAIR LOCATION AND LAYOUT PLAN

ROUTE	SECTION	COUNTY	TOTAL SHEETS	SHEET NUMBER
VARIOUS	2006-035 LS	VARIOUS	27	23

CONTRACT 60B91

NOTIFY RICK WANNER 72 HOURS PRIOR TO PLANTING AT (847)705-4171 FOR LAYOUT.

GENERAL LOCATION MAP

COUNTY: DUPAGE
CLAIM: N/A

CITY/TOWN: ADDISON

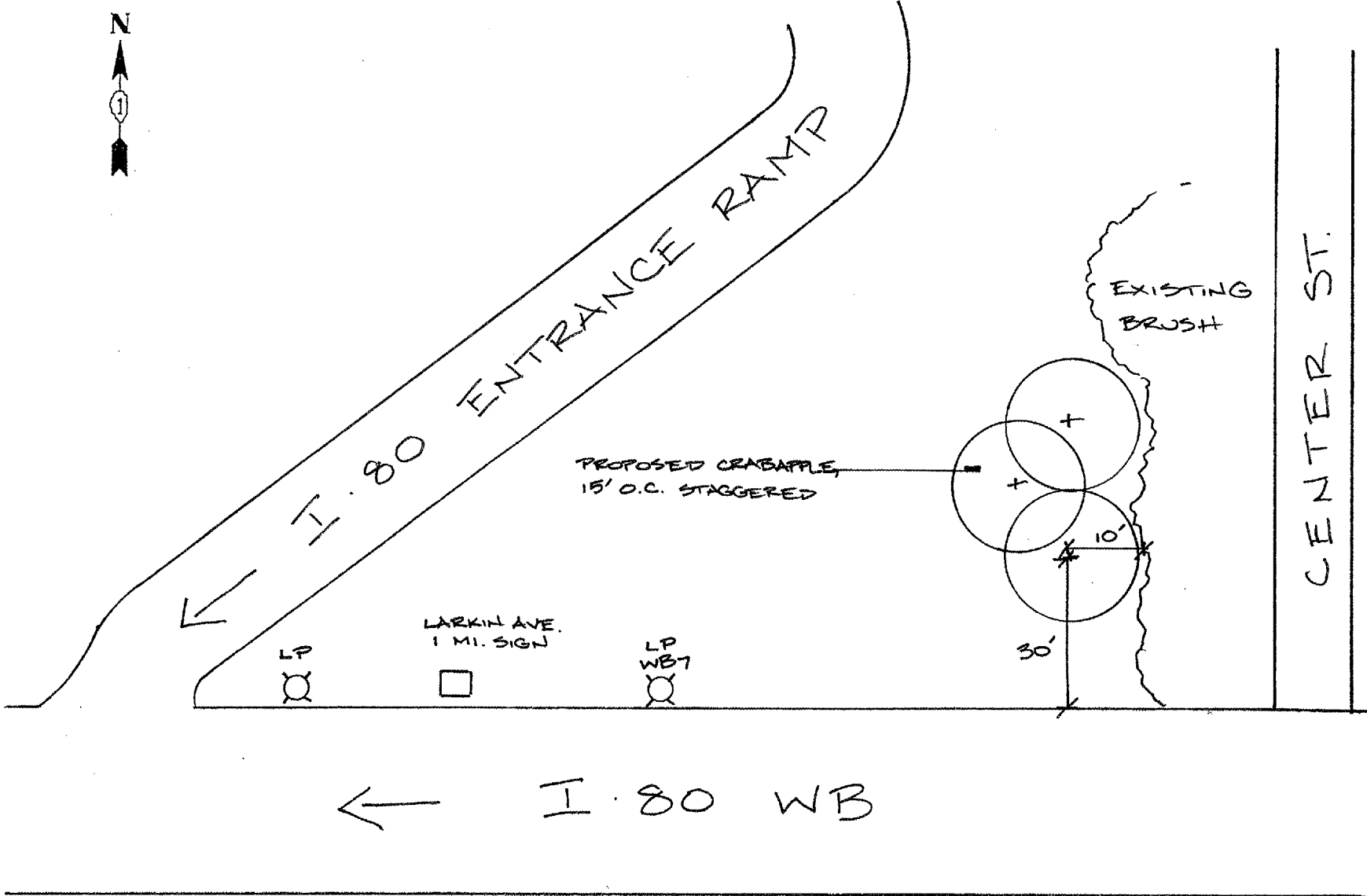
SCHEDULE OF LANDSCAPE ITEMS

DESCRIPTION	QTY/UNIT
GYMNOCLADUS DIOICUS	
KENTUCKY COFFEETREE	7 EACH

ILLINOIS DEPARTMENT OF TRANSPORTATION
LANDSCAPE REPAIR LOCATION AND LAYOUT PLAN

ROUTE	SECTION	COUNTY	TOTAL SHEETS	SHEET NUMBER
VARIOUS	2006-035 LS	VARIOUS	27	24

CONTRACT 60B91



GENERAL LOCATION MAP

COUNTY: WILL
CLAIM #: 722671

CITY/TOWN: JOLIET

SCHEDULE OF LANDSCAPE ITEMS

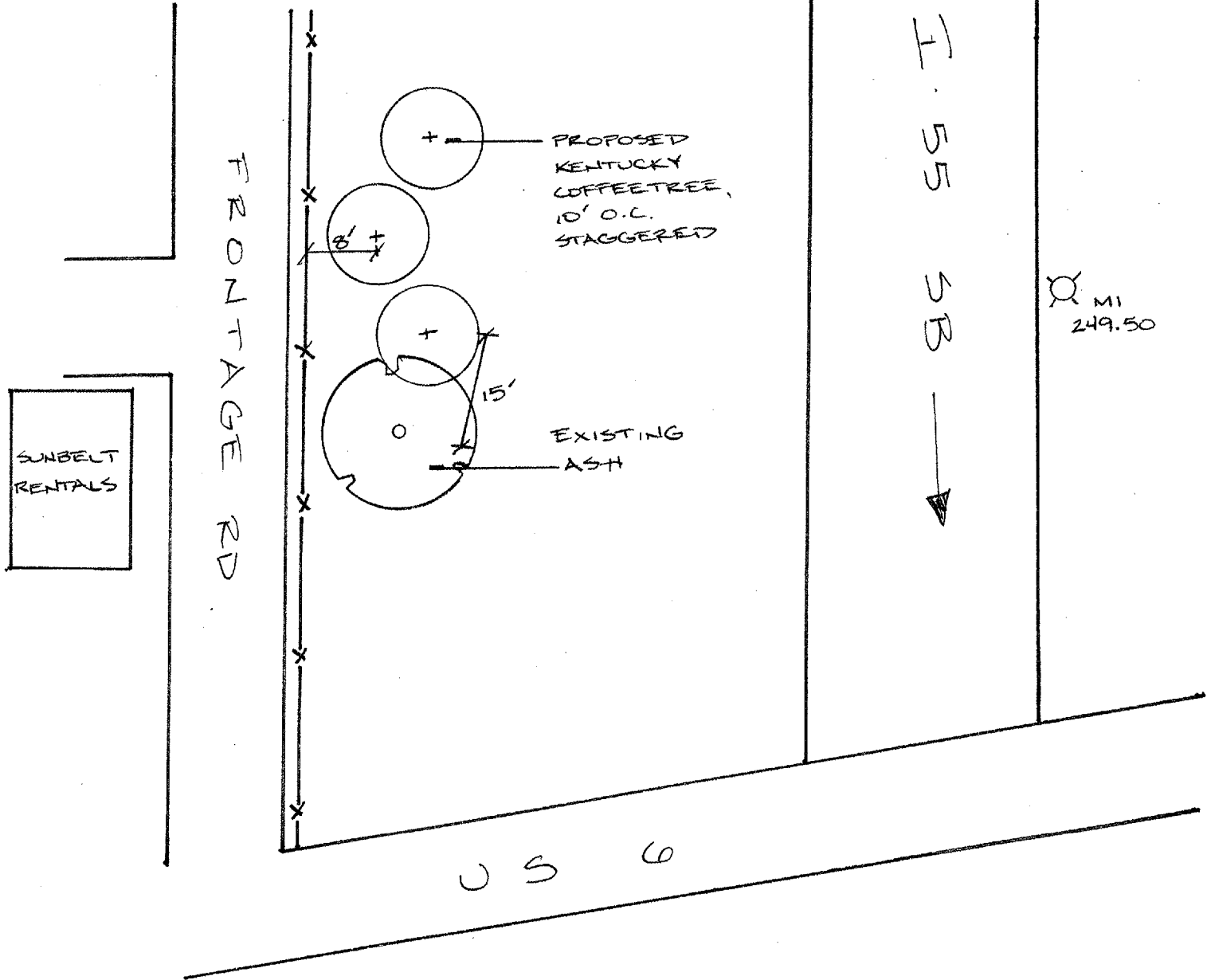
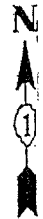
DESCRIPTION	QTY/UNIT
MALUS 'DOLGO' DOLGO CRABAPPLE	3 EACH

NOT DRAWN TO SCALE

ILLINOIS DEPARTMENT OF TRANSPORTATION
LANDSCAPE REPAIR LOCATION AND LAYOUT PLAN

ROUTE	SECTION	COUNTY	TOTAL SHEETS	SHEET NUMBER
VARIOUS	2006-035 LS	VARIOUS	27	25

CONTRACT 60B91



GENERAL LOCATION MAP

COUNTY: WILL
CLAIM #: 721738 721758

CITY/TOWN: CHANNAHON

SCHEDULE OF LANDSCAPE ITEMS

DESCRIPTION	QTY/UNIT
GYMNOCLADUS DIOICUS	
KENTUCKY COFFEETREE	3 EACH

NOT DRAWN TO SCALE

ILLINOIS DEPARTMENT OF TRANSPORTATION
LANDSCAPE REPAIR LOCATION AND
LAYOUT PLAN

ROUTE	SECTION	COUNTY	TOTAL SHEETS	SHEET NUMBER
VARIOUS	2006-035 LS	VARIOUS	27	26

CONTRACT 60B91

SCHEDULE OF LANDSCAPE ITEMS

DESCRIPTION	QTY/UNIT
GLEDITSIA TRIACANTHOS VAR. INERMIS 'SKYLINE' SKYLINE HONEYLOCUST	10 EACH
GYMNOCLADUS DIOICUS KENTUCKY COFFEETREE	15 EACH
PINUS NIGRA AUSTRIAN PINE	10 EACH
PRUNUS VIRGINIANA SCHUBERT SCHUBERT CHOKEBERRY	5 EACH
QUERCUS MACROCARPA BUR OAK	10 EACH
SYRINGA PEKINENSIS 'MORTON' CHINA SNOW PEKING LILAC	10 EACH
TILIA AMERICANA REDMOND REDMOND AMERICAN LINDEN	5 EACH

LOCATIONS WILL BE DETERMINED BY THE ENGINEER.

GENERAL LOCATION MAP

COUNTY: VARIOUS
CLAIM #: N/A

CITY/TOWN: VARIOUS

ILLINOIS DEPARTMENT OF TRANSPORTATION

LANDSCAPE REPAIR LOCATION AND LAYOUT PLAN

