

F.A.P. RTE.	SECTION	COUNTY	TOTAL SHEETS	SHEET NO.
541	2000-112 RS	LAKE	35	1

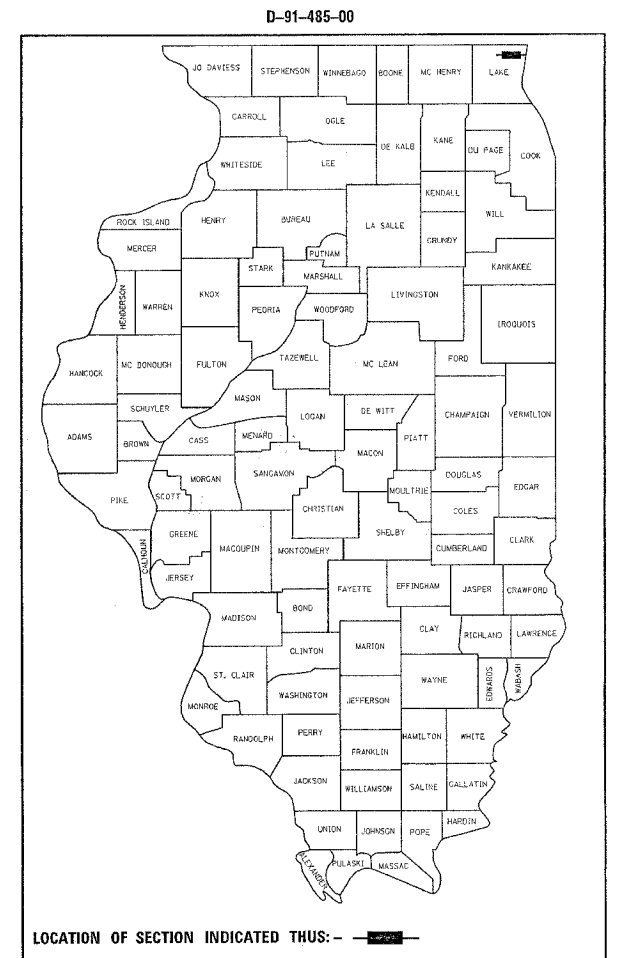
$\frac{12}{37}$

STATE OF ILLINOIS  
DEPARTMENT OF TRANSPORTATION  
DIVISION OF HIGHWAYS  
**PROPOSED HIGHWAY PLANS**

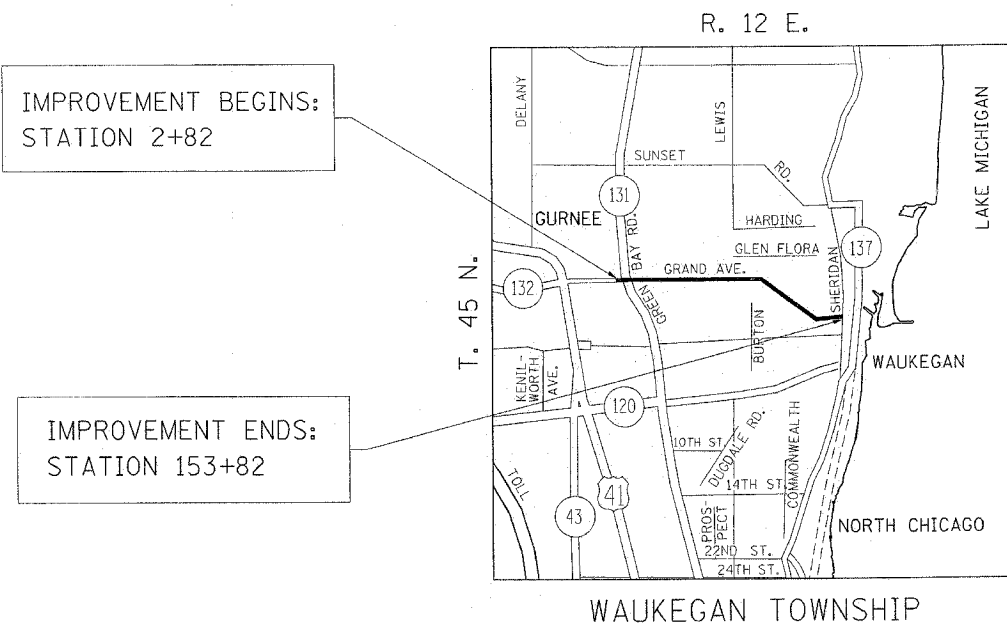
FOR INDEX OF SHEETS, SEE SHEET NO. 2

IMPROVEMENT LOCATED  
IN THE CITY OF WAUKEGAN

F.A.P. ROUTE 541: GRAND AVE.  
IL 131 (GREEN BAY RD.) TO SHERIDAN AVE.  
SECTION 2000-112 RS  
RESURFACING (MAINTENANCE)  
LAKE COUNTY  
C-91-485-00



DISTRICT ONE - PLAN PREPARATION ENGINEER - KEN ENG/J. CHANG (847) 705-4432

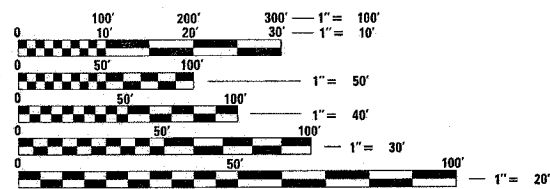


IMPROVEMENT BEGINS:  
STATION 2+82

IMPROVEMENT ENDS:  
STATION 153+82

TRAFFIC DATA

2004 ADT = 8,900-22,400  
POSTED SPEED = 30-35 MPH



FULL SIZE PLANS HAVE BEEN PREPARED USING STANDARD ENGINEERING SCALES. REDUCED SIZED PLANS WILL NOT CONFORM TO STANDARD SCALES. IN MAKING MEASUREMENTS ON REDUCED PLANS, THE ABOVE SCALES MAY BE USED.

J.U.L.I.E.  
JOINT UTILITY LOCATION INFORMATION FOR EXCAVATION  
1-800-892-0123

GROSS & NET LENGTH OF IMPROVEMENT = 15,100 FEET = 2.86 MILES

STATE OF ILLINOIS  
DEPARTMENT OF TRANSPORTATION  
DIVISION OF HIGHWAYS

SUBMITTED *Aug. 28 2006*

*Diane O'Keefe / C /*  
DEPUTY DIRECTOR OF HIGHWAYS, REGION ENGINEER

*October 13, 2006*  
*Mike Hine / R /*  
ENGINEER OF DESIGN AND ENVIRONMENT

*October 13, 2006*  
*Milton R. See, P.E. / R /*  
DIRECTOR OF HIGHWAYS, CHIEF ENGINEER

**PRINTED BY THE AUTHORITY  
OF THE STATE OF ILLINOIS**

CONTRACT NO. 62056