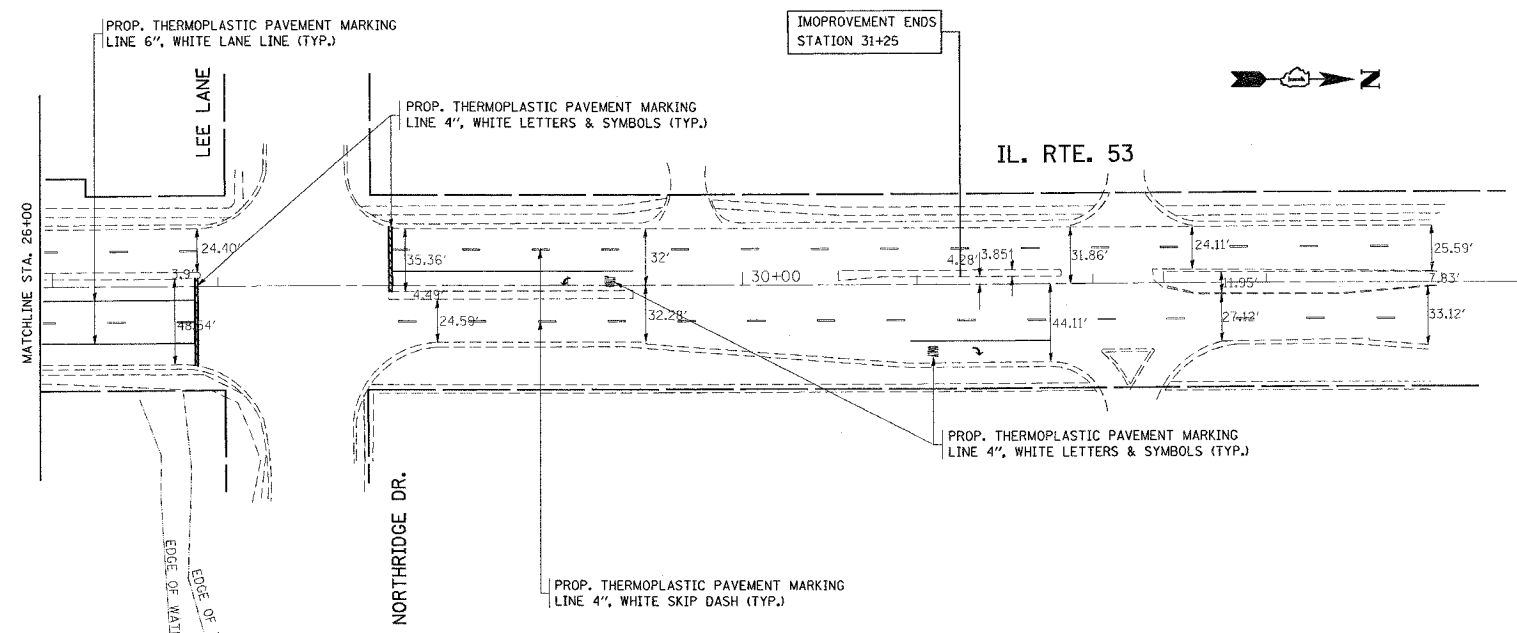
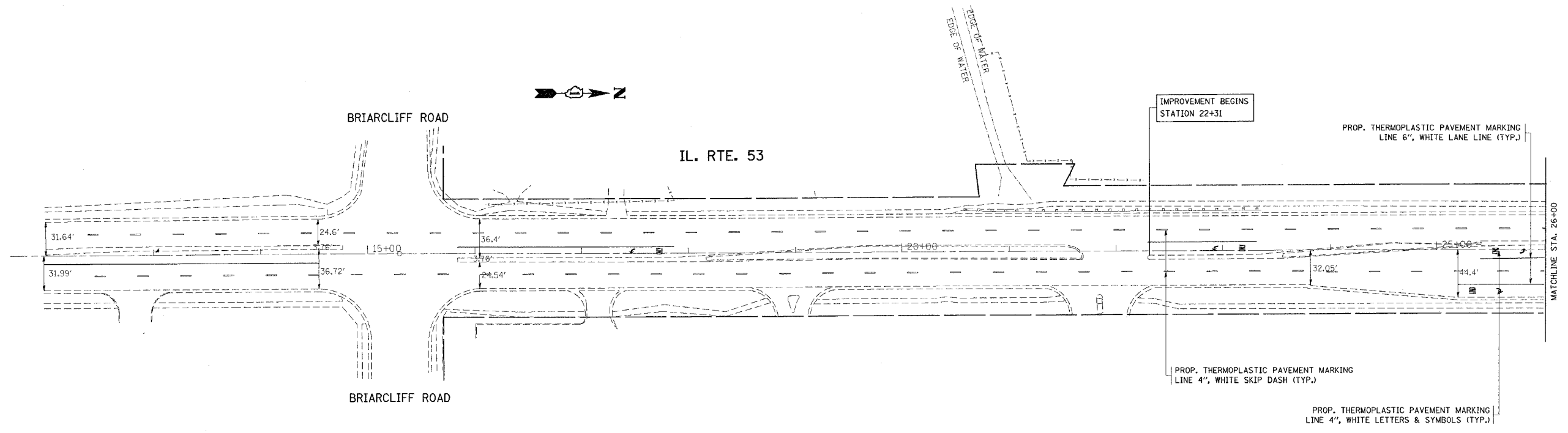


F.A.P. RTE.	SECTION	COUNTY	TOTAL SHEETS	SHEET NO.
870	534 R-1-T	WILL	42	19
STA.		TO STA.		
FED. ROAD DIST. NO.		ILLINOIS	FED. AID PROJECT	



NOTE: ALL FINAL PAVEMENT MARKINGS SHALL BE THERMOPLASTIC (OR EXTRUDED TYPE) AND SHOULD BE PLACED IN ACCORDANCE WITH "DISTRICT ONE TYPICAL PAVEMENT MARKINGS" DETAIL (TC-13)

ALL RAISED REFLECTIVE PAVEMENT MAKERS SHALL BE PLACED IN ACCORDANCE WITH THE DISTRICT ONE "TYPICAL APPLICATIONS RAISED REFLECTIVE PAVEMENT MARKER DETAIL." (TC-11)

PLOT DATE = 8/31/2007
FILE NAME = c:\projects\pl5160\design\m32
SCALE = 1/8" = 1'-0"
REFERENCE = REF#

8/31/2007
c:\projects\pl5160\design\m32
byunsh

REVISIONS		ILLINOIS DEPARTMENT OF TRANSPORTATION
NAME	DATE	
		ILLINOIS ROUTE 53 OVER LILY CACHE CREEK PAVEMENT MARKING PLAN
SCALE:	VERT. DATE	DRAWN BY CHECKED BY